






****WATCH 2 Installation videos BEFORE Installation:** www.ezshelf.com/videos

Included Plastic Parts

Tube Receivers – Left and Right	1 - Center Support	1 - End Bracket – NOT INCLUDED - For mounting to Back Wall, Corners &
 <p>Left shown</p>		 <p>Joining Shelves together for longer Shelf & Rod Unit</p>

End Bracket will NOT be needed if installing between two sidewalls (sides of a closet).

****For 1 Side Wall you will need to purchase 1 End Bracket (EZS-EB-SCRW for Shelf & Rod) or (EZS-EB-SW for Shelf).**

****If you have NO Side Walls and want to attach only to Back Wall you will need to purchase 2 End Brackets.**

Installing in a Tight Space

(40-44" wide for 40-73" tubes, and 28-32" wide for 28-48" tubes)

Insert ALL tubes into both left & right Tube Receivers BEFORE step 1.

Tubes will NOT fit into a tight space once the brackets are mounted to the wall.

Either have someone help hold the Shelf or mount Center Support Bracket First.

The tubes will NOT fit into a tight space once the brackets are mounted to the wall.

Mounting Tube Receiver to Sidewall

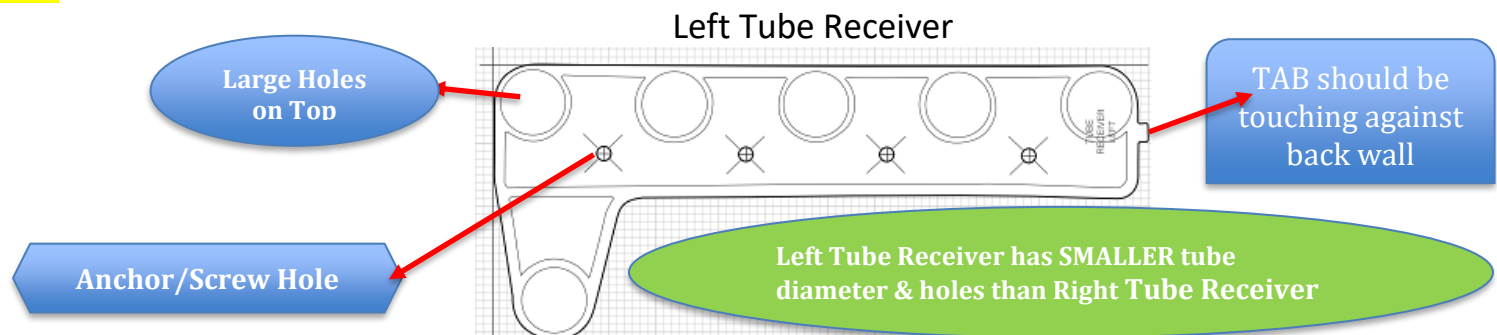
1. Measure & Mark Sidewall from floor up

Suggested Shelf Heights: Single Hanging: 60" - 80" from floor to top of shelf.

Double Hanging: 80" - 84" from floor to top shelf & 40" - 42" for bottom shelf.

2. Tape Tube Receiver Template to sidewall – Must be Level.
3. Mark Four Screw Holes with Pencil.

Note: Tube Receiver Installation: Large Holes MUST be on Top & Small, Protruding TAB MUST touch back wall (see below).

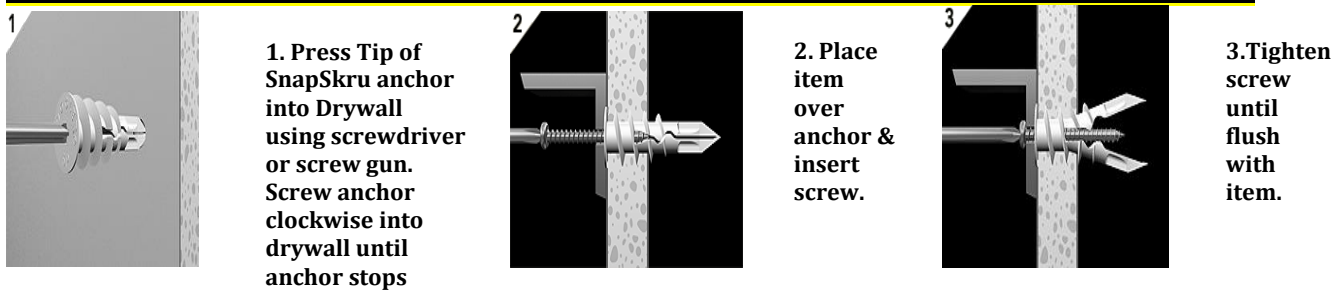


4. **CHECK FOR STUDS**—Push nail/screw into drywall-If it doesn't go all the way in you may be hitting a stud or other object.
5. **Drywall Anchor Instructions**- **Drill/poke a small hole into wall. Push TIP ONLY of Anchor** into drywall & Screw in plastic anchors (see drywall anchor pictures below).
Use screwdriver/electric drill (on **LOW setting – do NOT over tighten**).
Note: EZ Shelf will hold 200 lbs. WITHOUT securing to studs.

Do NOT use included anchors when:

- **You HIT A STUD:** Drill “pilot” hole into stud & attach screw directly to stud.
- **PLASTER WALLS:** Drill “pilot” hole - Use plastic or lead anchors & appropriate screws.
- **CONCRETE WALLS:** Drill “pilot” hole (may need hammer drill) - Use concrete anchors/screws.

Drywall Anchor & Screw Installation Diagrams (see ezshelf.com/videos for more information):



6. **Insert Back Tube (closest to back wall) into installed Tube Receiver** (use hammer or mallet if necessary).
7. **Attach Back Tube to other Tube Receiver and Extend to opposite sidewall.**
8. **Place Level on Back Tube & then also on Tube Receiver – Must be level - Mark Holes on wall with pencil.**
9. **Attach Tube Receiver to Wall (Repeat Steps 4 and 5 above from page 1)**
10. **Insert 4 other Top Tubes** into both Tube Receivers. **Do NOT insert Hanging Rod tube (Bottom of “L”) until after step 13.**
11. **Twist both ends of tubes until fully secured.**
12. **Place Center Support so the tubes rest in the slots (preferably thicker part of tubes). To make sure Center Support contacts ALL Tubes - Push center support UP from Bottom. Then Mark Holes on Back Wall.**



Note: DO NOT rest Center Support on tube extension sleeves.

13. **Attach Center Support using anchors and screws (see steps 4-5 on page 1).**
14. **Insert Tube for Hanging Rod into both Tube Receivers.**