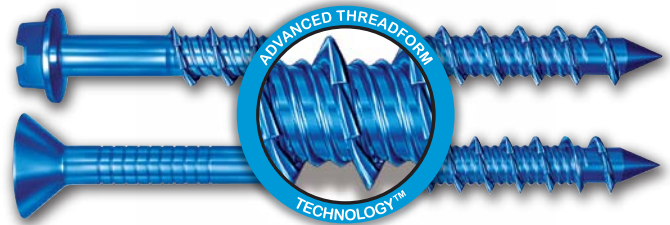


For Fastening In:



Advanced Threadform Technology:



30% less installation torque • 20% more holding power

How to Choose a Tapcon[®]:

1 Choose a Head Type:



Phillips Head

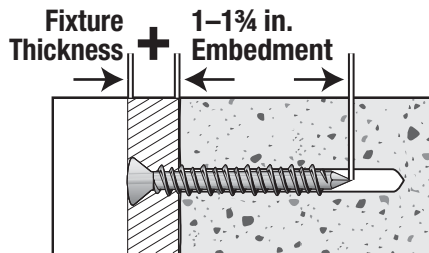


Hex Head



Maxi-Set

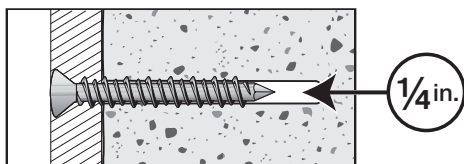
2 Choose a Length:



3 Choose a Diameter:



4 Choose a drill bit long enough to allow the hole to be drilled at least 1/4 in. longer than anchor embedment:



Performance Values:

| Anchor Diameter | Ultimate Pull-Out in Concrete (4,000 PSI)* | | | |
|-----------------|--|------------|------------|------------|
| | Depth of Embedment in Solid Material | | | |
| | 1" | 1-1/4" | 1-1/2" | 1-3/4" |
| 3/16" | 650 lbs. | 870 lbs. | 1,090 lbs. | 1,460 lbs. |
| 1/4" | 800 lbs. | 1,340 lbs. | 1,820 lbs. | 2,380 lbs. |

| Anchor Diameter | Ultimate Shear In Concrete (4,000 PSI)* | | | |
|-----------------|---|------------|------------|------------|
| | Depth of Embedment in Solid Material | | | |
| | 1" | 1-1/4" | 1-1/2" | 1-3/4" |
| 3/16" | 720 lbs. | 800 lbs. | 860 lbs. | 990 lbs. |
| 1/4" | 1,360 lbs. | 1,370 lbs. | 1,380 lbs. | 1,670 lbs. |

| Anchor Diameter | Anchor Embedment | Ultimate Pullout/Shear In Hollow Block* | |
|-----------------|------------------|---|----------------|
| | | Ultimate Pullout | Ultimate Shear |
| 3/16" | 1" | 340 lbs. | 730 lbs. |
| 1/4" | 1" | 500 lbs. | 1,000 lbs. |

*A safety factor of 4:1 or 25% of ultimate pullout/shear value is generally accepted as a safe working load.



Blue Climaseal[®] Tapcon[®]



Product Features & Benefits

- Patented Advance Threadform provides superior pull-out performance.
- Application of Climaseal[®] coating adds extra corrosion protection.
 - 30% less installation torque; 20% more holding power.
- Reversible and removable, can be installed close to concrete edge.
 - Building code approved.

Common Applications

- Downspout straps • Electrical equipment • Furring strips
- Flag holders • Hurricane preparation • HVAC strapping
- 2 x 4's • Window/Door frames & bucks

410 Stainless Steel Tapcon[®]



**Superior
Corrosion
Protection**

Product Features & Benefits

- 410 Series Stainless for superior corrosion protection.
- Cuts threads into concrete, brick and hollow block.
- Reversible and removable, can be installed close to concrete edge.
 - Fast installation... drill a hole...drive an anchor.

Common Applications

- Marine
- Screened porch and pool enclosures
- Railings—safety and decorative

Maxi-Set Tapcon[®]



**Available in silver
or white finish**

Product Features & Benefits

- Patented Advance Threadform provides superior pull-out performance.
- Large 5/8" diameter flange provides more bearing surface than regular Tapcon.
- UltraShield[™] long-life finish delivers excellent corrosion protection.
- Reversible and removable, can be installed close to concrete edge.
 - Building code approved.

Common Applications

- Shutters—protective and decorative
- Screened porch and pool enclosures

White Tapcon[®]



Product Features & Benefits

- Patented Advance Threadform provides superior pull-out performance.
- White UltraShield[™] long-life finish delivers excellent corrosion protection.
- Recommended for use in ACQ pressure-treated lumber.
- Reversible and removable, can be installed close to concrete edge.
 - Building code approved.

Common Applications

- Window frames
- Shutters—protective and decorative

Tapcon Installation Accessories

Tapcon concrete anchors are designed to work as a part of a system. The system includes the Condrive[®] Installation Tool, the carbide tipped Tapcon[®] Drill Bit, and the Tapcon[®] anchor. For consistent performance, it is recommended to use the entire system.

Tapcon Drill Bits



- Ensure the precise drilling of pilot holes when installing Tapcon anchors.
- Masonry drill bits with a carbide tip.
- Tapcon drill bits are sold separately and are also included in the large packages of anchors (at select stores only).
- Colorstripe on drill bit package corresponds to Tapcon Packaging.
 - For installing 1/4" Tapcon fasteners, use a 3/16" Tapcon drill bit (Green Stripe)
 - For installing 3/16" Tapcon fasteners, use a 5/32" Tapcon drill bit (Red Stripe)

Pick the correct drill bit diameter by matching the color stripes on the packaging.

3/16" Drill Bit
for
1/4" Tapcons

5/32" Drill Bit
for
3/16" Tapcons

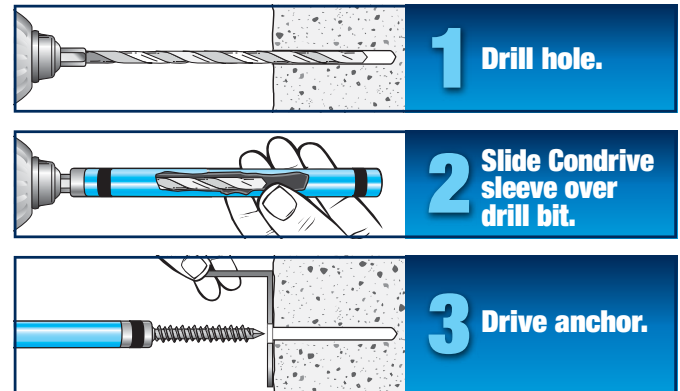
| Fixture Thickness | Recommended Anchor Length | Drill Bit Length |
|-------------------|---------------------------|------------------|
| 0 to 1/4" | 1-1/4" | 3-1/2" |
| 1/4" to 3/4" | 1-3/4" | 3-1/2" |
| 3/4" to 1-1/4" | 2-1/4" | 4-1/2" |
| 1-1/4" to 3-1/4" | 2-3/4" | 4-1/2" |
| 1-3/4" to 2-1/4" | 3-1/4" | 5-1/2" |
| 2-1/4" to 2-3/4" | 3-3/4" | 5-1/2" |
| 2-1/2" to 3" | 4" | 5-1/2" |

Condrive 500 Installation Tool

- Makes installation of Tapcon[®] Concrete Anchors easy, fast, and accurate.
- Designed for use with a hammer drill and Tapcon drill bits.
- Eliminates the need for two drills or extra nut drivers.
- Installs both head styles and all lengths of Tapcons.
- Tool drives 3/16" and 1/4" diameter Tapcons.



Torque adjusted driver prevents over-torquing anchor heads.



Drill

Slide

Drive