

Shower Pan Installation Guide - Clamp Ring



Subfloor Prep

You must begin with a dry and structurally sound subfloor. If water damage, rotting, or any other structural defects are present, you **MUST** repair prior to installing your new showerboard. A clean and level subfloor is required for a successful installation. After cleaning the subfloor, use a level to check the subfloor. The subfloor **MUST** be level so that the showerboard will drain correctly.

Note: a self-leveling mortar can be used to level the subfloor.

Step 1

Remove the four screws and discharge the white clamp ring. Install a bead of urethane onto the clamp ring and around each screw as show in picture two. Screw the adaptor on using the screws from the clamp ring.



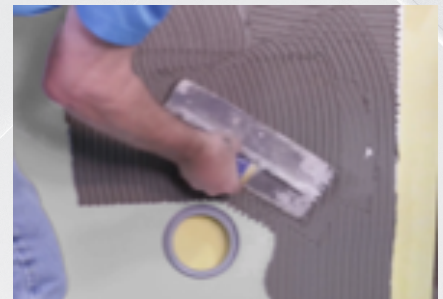
Step 2

Prefit the shower pan and cut to fit the shower area, if needed. You can cut the foam board with a utility knife or a circular saw. Install the cone on the shower pan.



Step 3

Mix a modified thin-set mortar suitable for the subfloor as per manufacturer specification. Use a 3/8" square notched trowel and apply thin-set mortar to the floor and backside of shower pan. Assure that the thin-set is troweled in the same direction. Spreading the thin-set with a square notched trowel will assure full coverage. Set the shower pan into place.



Step 4

Protect the shower pan by using a double layer of cardboard. Take two bags of thin-set and place them in the drain area for extra weight to assure the pan slope stays at a minimum of 2%. The drain cover will be screwed onto the pan just before tile installation.



Shower Pan Installation Guide - CONNECTITE® DWV FITTING



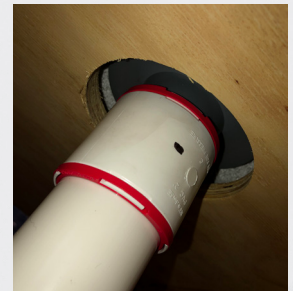
Subfloor Prep

You must begin with a dry and structurally sound subfloor. If water damage, rotting, or any other structural defects are present, you MUST repair prior to installing your new showerboard. A clean and level subfloor is required for a successful installation. After cleaning the subfloor, use a level to check the subfloor. The subfloor MUST be level so that the showerboard will drain correctly.

Note: a self-leveling mortar can be used to level the subfloor.

Step 1

Cut the PVC pipe down to 2" below subfloor by using a internal PVC pipe cutter drill bit. Use a 2" CONNECTITE® and follow the easy to install CONNECTITE® installation instructions.



Step 2

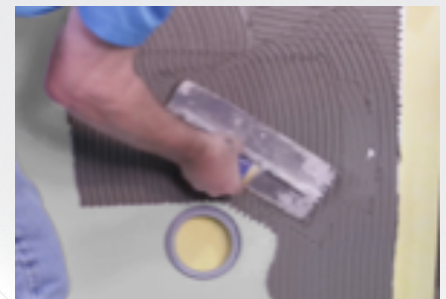
Prefit the shower pan and cut to fit the shower area, if needed. You can cut the foam board with a utility knife or a circular saw. If the hole in the subfloor is wider than 4" diameter, use the metal plate to support the area around the PVC pipe. Install the Dural adapter to the CONNECTITE® and follow the easy to install CONNECTITE® installation instructions. The adapter has to sit 1/4" above the level subfloor.



up 1/4"

Step 3

Mix a modified thin-set mortar suitable for the subfloor as per manufacturer specification. Use a 3/8" square notched trowel and apply thin-set mortar to the floor and backside of shower pan. Assure that the thin-set is troweled in the same direction. Spreading the thin-set with a square notched trowel will assure full coverage. Set the shower pan in place.



Step 4

Protect the shower pan by using a double layer of cardboard. Take two bags of thin-set and place them in the drain area for extra weight to assure the pan slope stays at a minimum of 2%. The drain cover will be screwed onto the pan just before tile installation.



Shower Pan Installation Guide - Rubber Gasket

To use this procedure, you need to have access from the bottom



Subfloor Prep

You must begin with a dry and structurally sound subfloor. If water damage, rotting, or any other structural defects are present, you **MUST** repair prior to installing your new showerboard. A clean and level subfloor is required for a successful installation. After cleaning the subfloor, use a level to check the subfloor. The subfloor **MUST** be level so that the showerboard will drain correctly.

Note: a self-leveling mortar can be used to level the subfloor.

Step 1

Cut the PVC pipe down to 2" below subfloor by using an internal PVC pipe cutter drill bit. Use a 2" rubber gasket to connect to the 2" waste pipe and to the Dural adapter.



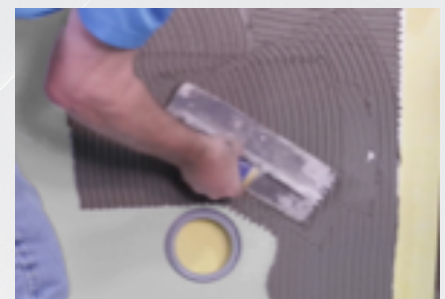
Step 2

Prefit the shower pan and cut to fit the shower area, if needed. You can cut the foam board with a utility knife or a circular saw. If the hole in the subfloor is wider than 4" diameter, use the metal plate to support the area around the PVC pipe. Install the Dural adapter to the rubber gasket. The adapter has to sit 1/4" above the level subfloor.



Step 3

Mix a modified thin-set mortar suitable for the subfloor as per manufacturer specification. Use a 3/8" square notched trowel and apply thin-set mortar to the floor and backside of shower pan. Assure that the thin-set is troweled in the same direction. Spreading the thin-set with a square notched trowel will assure full coverage. Set the shower pan in place.



Step 4

Protect the shower pan by using a double layer of cardboard. Take two bags of thin-set and place them in the drain area for extra weight to assure the pan slope stays at a minimum of 2%. The drain cover will be screwed onto the pan just before tile installation.

