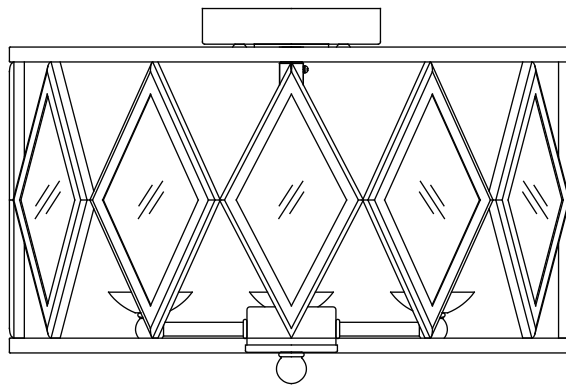


USE AND CARE GUIDE

3-Light Beveled Glass Lamp



Questions, problems, missing parts? Before returning to the store,
call Home Decorators Collection Customer Service
8 a.m. - 7 p.m., EST, Monday - Friday, 9 a.m. - 6 p.m., EST, Saturday

1-800-986-3460

HOMEDEPOT.CA

THANK YOU

We appreciate the trust and confidence you have placed in Home Decorators Collection through the purchase of this lamp unit. We strive to continually create quality products designed to enhance your home. Visit us online to see our full line of products available for your home improvement needs. Thank you for choosing Home Decorators Collection!

Table of Contents

Table of Contents	2	Pre-Installation	3
Safety Information	2	Installation	5
Warranty	2	Care and Cleaning	6
		Troubleshooting	6

Safety Information



WARNING: Inspect the wire insulation for any cuts, abrasions, or exposed copper that may have resulted during shipping. If there is a defect in the wire, do not attempt installation. Please call our Customer Service Team at 1-800-986-3460.



WARNING: RISK OF ELECTRIC SHOCK. Before starting the installation, disconnect the power by turning off the circuit breaker or by removing the appropriate fuse at the fuse box. Turning the power off at the switch is not sufficient to prevent electrical shock.

Warranty

ONE YEAR MANUFACTURER WARRANTY

WHAT IS COVERED

The manufacturer warrants this unit to be free from defects in materials and workmanship for a period of one (1) year from date of purchase.

This warranty applies only to the original consumer purchaser and only to products used in normal use and service. If this product is found to be defective, the manufacturer's only obligation, and your exclusive remedy, is the repair or replacement of the product at the manufacturer's discretion, provided that the product has not been damaged through misuse, abuse, accident, modifications, alterations, neglect, or mishandling. This warranty shall not apply to any product that is found to have been improperly installed, setup, or used in any way not in accordance with the instructions supplied with the product. This warranty shall not apply to a failure of the product as a result of an accident, misuse, abuse, negligence, alteration, faulty installation, or any other failure not relating to faulty material or workmanship.

This warranty shall not apply to the finish on any portion of the product, such as surface and/or weathering, as this is considered normal wear and tear.

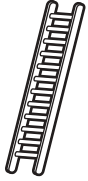
WHAT IS NOT COVERED

The manufacturer does not warrant and specifically disclaims any warranty, whether express or implied, of fitness for a particular purpose, other than the warranty contained herein. The manufacturer specifically disclaims any liability and shall not be liable for any consequential or incidental loss or damage, including but not limited to any labor/ expense costs involved in the replacement or repair of said product. Contact the Customer Service Team at 1-800-986-3460 or visit www.HOMEDEPOT.CA

Pre-Installation

- Read all instructions before assembling.
- To avoid damaging this product, assemble it on a soft, non-abrasive, surface such as a carpet or cardboard.
- Keep the receipt and these instructions for proof of purchase.

TOOLS REQUIRED



Ladder



Safety goggles



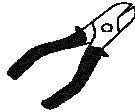
Phillips
screwdriver



Electrical Tape



Wire Strippers



Wire cutters

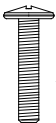


Pliers

HARDWARE INCLUDED



NOTE: Hardware not shown to actual size.



AA

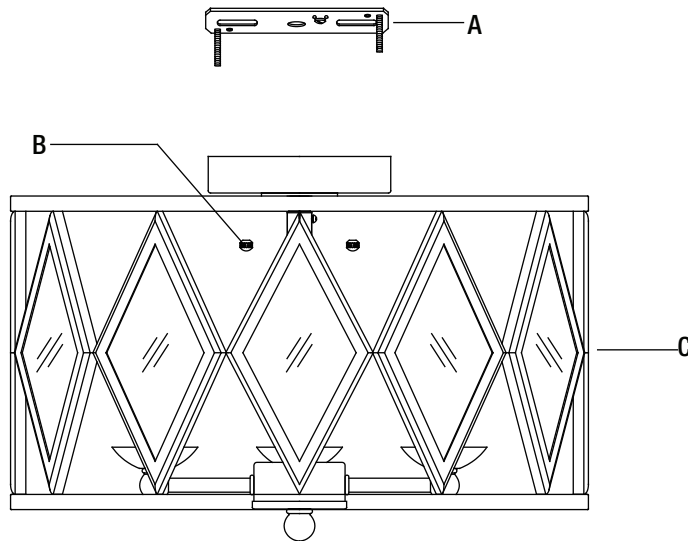


BB

Part	Description	Quantity
AA	Junction Box Screws	2
BB	Wire Connector	3

Pre-Installation (continued)

PACKAGE CONTENTS

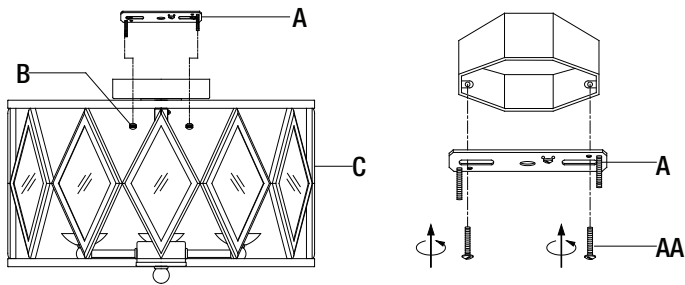


Part	Description	Quantity
A	Mounting Bracket (preassembled to canopy (A))	1
B	Canopy Nuts (preassembled to canopy (A))	2
C	Fixture assembly	1

Installation

1 Installing the mounting bracket

- Carefully unpack and lay all parts on a clean, level surface.
- Unscrew the canopy nuts (B) from fixture assembly (C) and detach the mounting bracket (A).
- Attach the mounting bracket (A) to the junction box (not included) with junction box screws (AA).

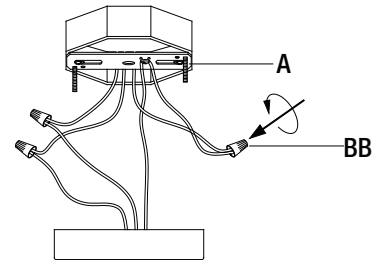


2 Making the electrical connections



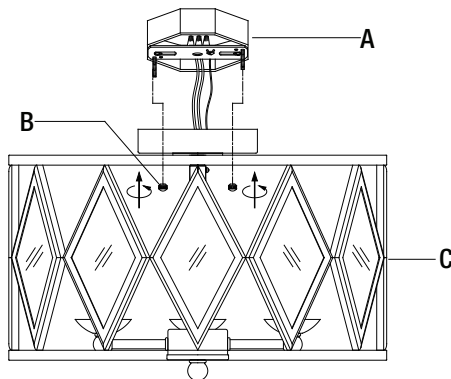
NOTE: Make the connections to a 120V AC 60Hz circuit.

- Connect the white wires from the fixture to the white wire of the supply circuit.
- Connect the black wires from the fixture to the black wire of the supply circuit.
- Connect the bare copper grounding wire from the fixture to the green screw on the mounting bracket and the grounding conductor of the supply circuit.
- Use U.L./C.S.A. listed wire connectors (BB) suitable for the size, type and number of conductors. Secure the wire connectors (BB) with U.L./C.S.A. listed electrical tape.



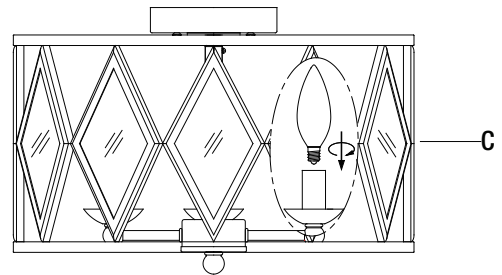
3 Installing the Fixture

- Place the fixture assembly (C) against the mounting surface, allowing the preassembled screws on mounting bracket (A) to pass through the fixture assembly (C) and secure with canopy nuts (B).



4 Installing the light bulb

- Requires 3 x 60 Watt E12 Type B Bulbs or CFL or LED equivalent (not included).



Care and Cleaning

- Clean the unit with a soft, dry cloth.
- Do not use any cleaners with chemicals, solvents, or harsh abrasives.

Troubleshooting

Problem	Possible Causes	Solutions
The bulb will not light.	The bulb is burned out.	Replace the light bulb.
	The power is off.	Ensure the power supply is on.
	The circuit breaker is off.	Ensure the circuit breaker is in the ON position.
The fuse blows or circuit breaker blows when the light is turned on.	There is an exposed wire.	Discontinue use of the lamp. Contact a qualified electrician or call the Customer Service Team at 1-800-986-3460.

HOME DECORATORS COLLECTION

Questions, problems, missing parts? Before returning to the store,
call Home Decorators Collection Customer Service
8 a.m. - 7 p.m., EST, Monday - Friday, 9 a.m. - 6 p.m., EST, Saturday

1-800-986-3460

HOMEDEPOT.CA

Retain this manual for future use.