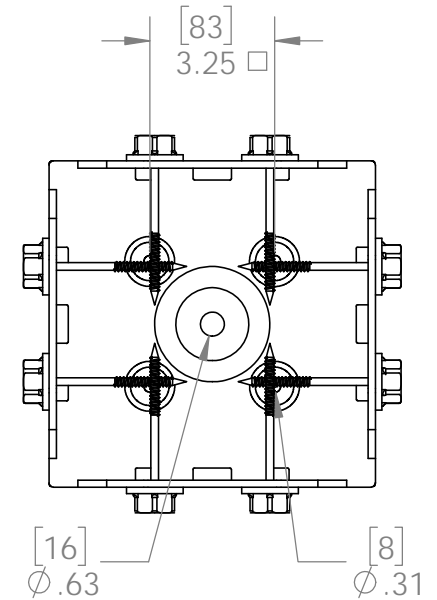
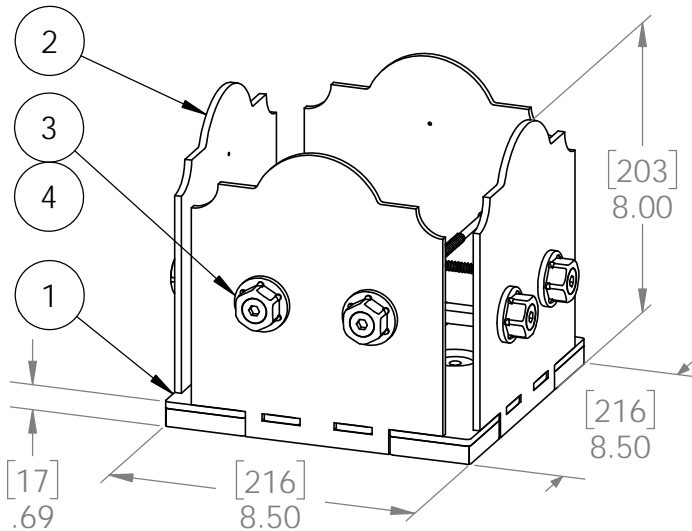
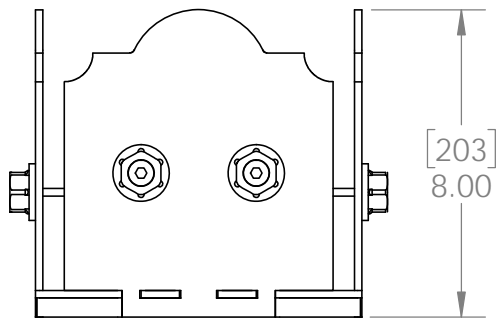
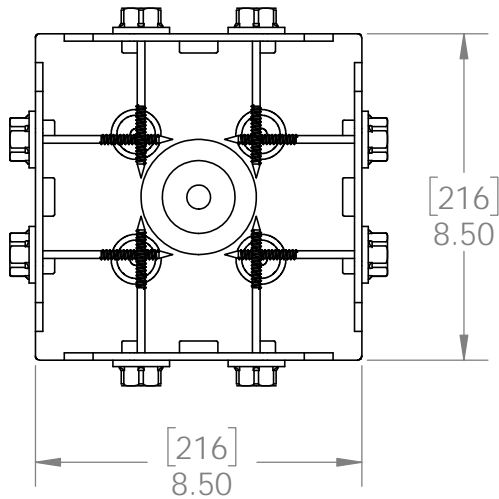


Product & Packaging Specs

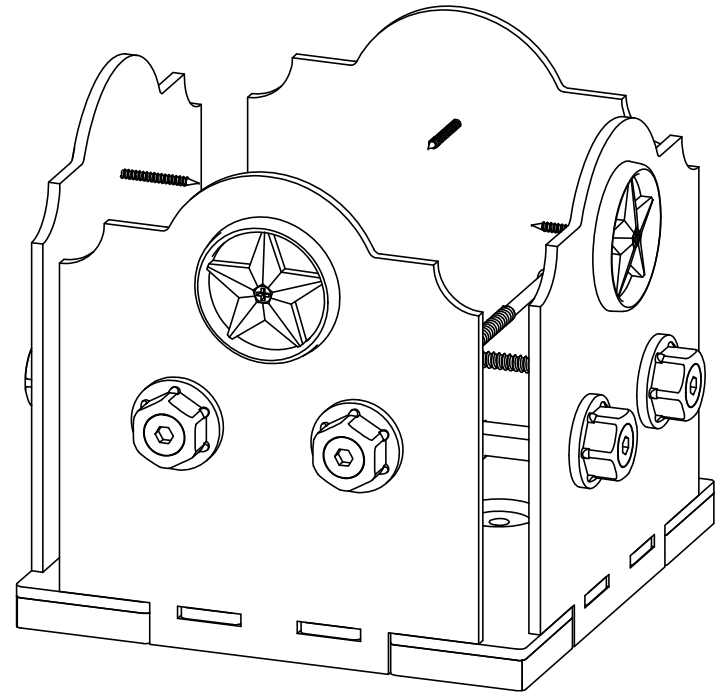
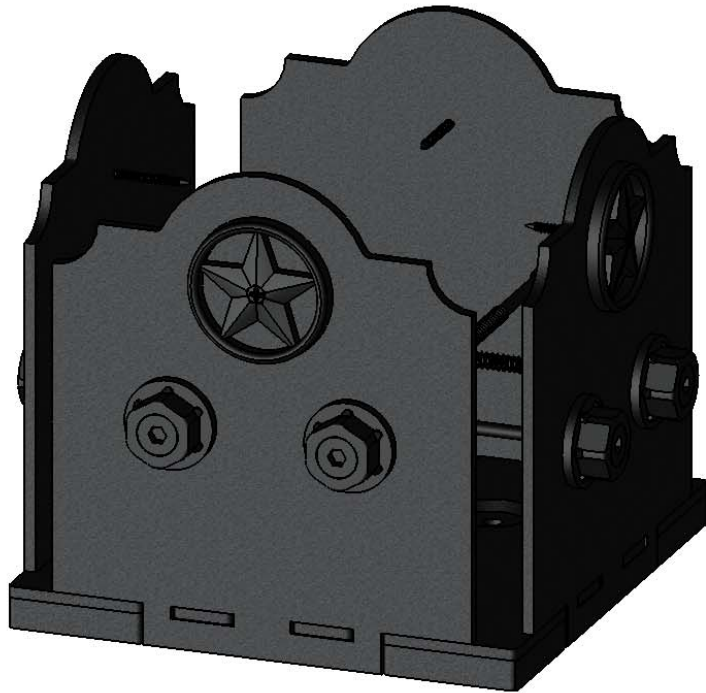
8x8 Post Base (8x8-PB-LS)

Item #: 56609

ITEM NO.	QTY.	PART NUMBER	DESCRIPTION
1	1	56609-11	Assembly, 8x8 Stand Off
2	4	56609-15	Plate, 8x8 Side Compression
3	0.8	56621	1 1/2" Hex Cap Nut (HCN)
4	0.32	56627	OWT Timber Screw 3-3/4"



Weight: 37.94 LBS
 Scale: 1:5
 Last updated: 9/6/2016



2-3/8" (56623) & 3-3/8" (56624) Stars Sold Separately

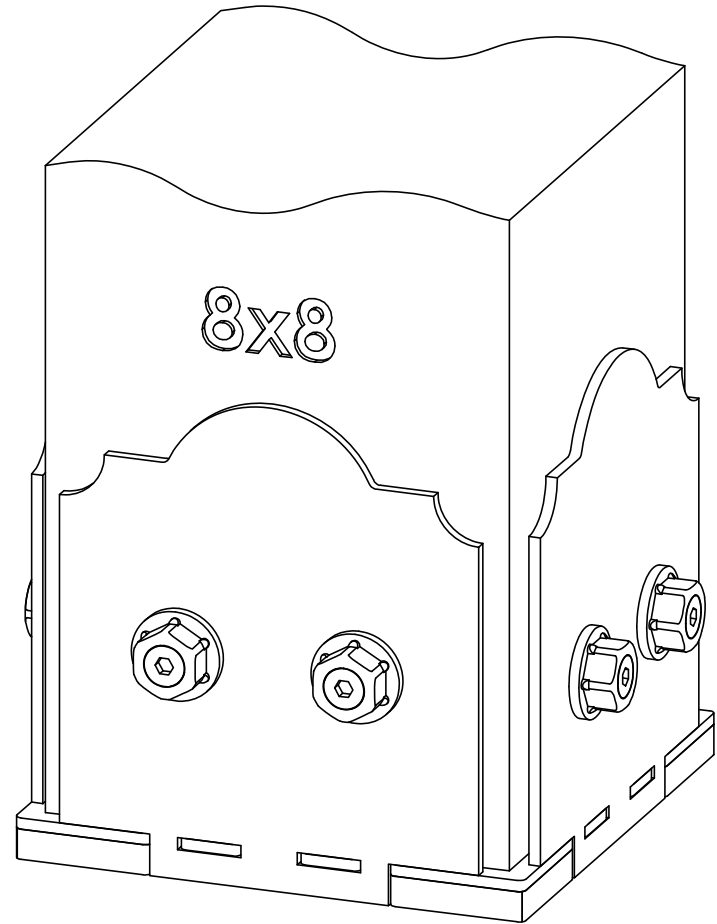
Weight: 37.94 LBS
Scale: 1:3
Last updated: 9/6/2016

56609-10

Product & Packaging Specs

8x8 Post Base (8x8-PB-LS)

Item #: 56609



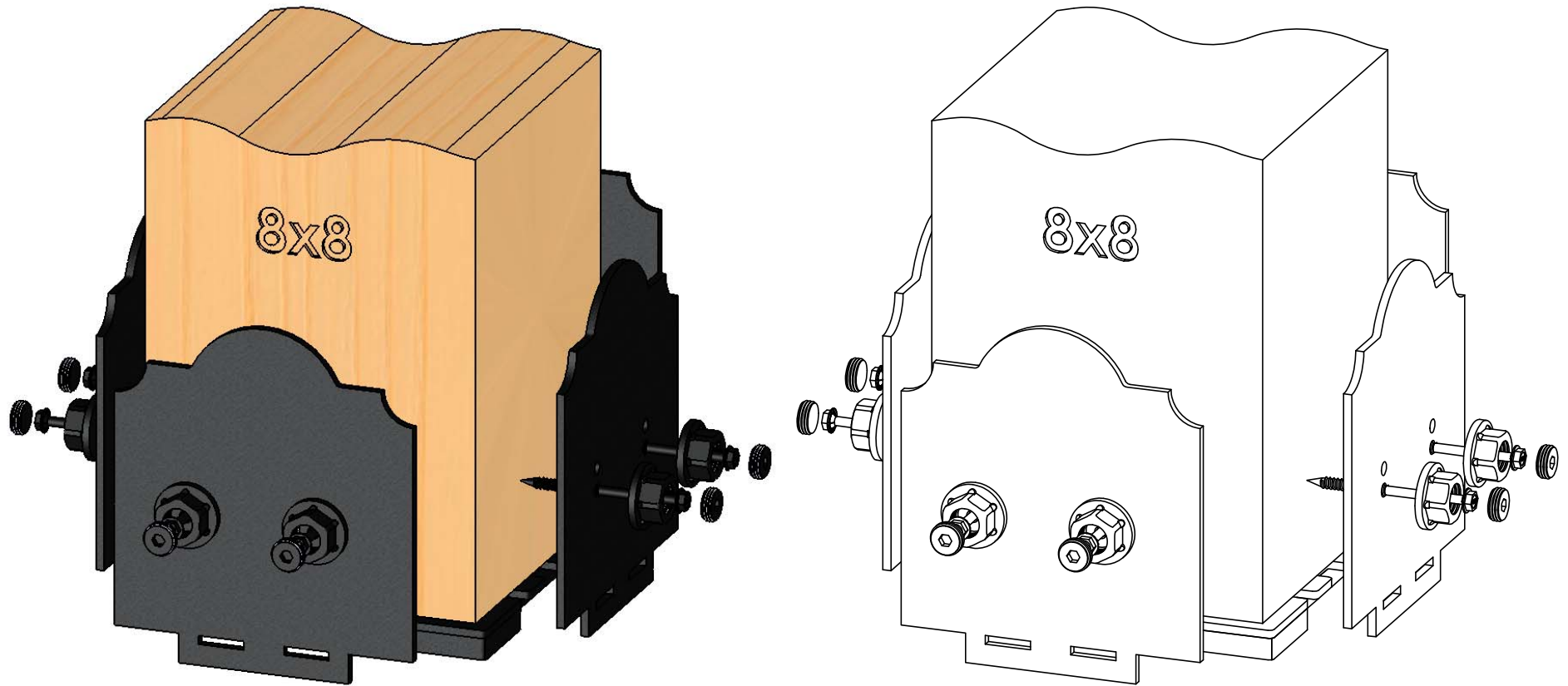
Weight: 37.94 LBS
Scale: 1:3
Last updated: 9/6/2016

56609-10

Product & Packaging Specs

8x8 Post Base (8x8-PB-LS)

Item #: 56609



Weight: 37.94 LBS
Scale: 1:3.5
Last updated: 9/6/2016

56609-10

Product & Packaging Specs

1 1/2" Hex Cap Nut (HCN)

Item #: 56621



Weight: 0.04 LBS
Scale: 1:1
Last updated: 9/6/2016

56609-10

for additional details, see drawing 56621

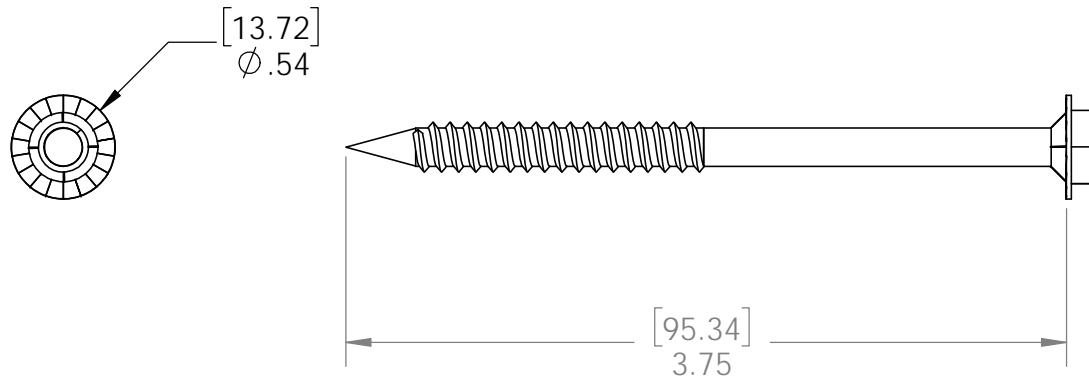
V2.00 - Installation Instructions, Specifications and Project Plans are effective 9/6/2016 . This information is updated periodically and should not be relied upon after 2 years from 9/6/2016 . Please visit OZCOBP.com to get current information.



Product & Packaging Specs

Screw, OWT 3-3/4" (95mm) Timber

Item #: 56627



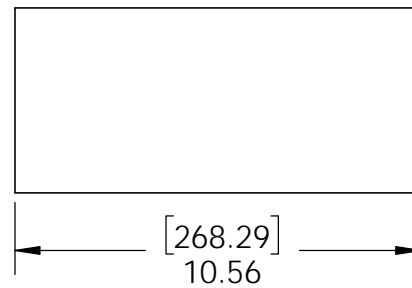
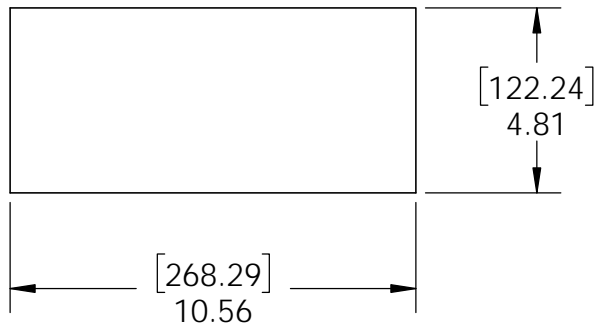
Weight: 0.02 LBS
Scale: 1:1
Last updated: 9/6/2016

for additional details, see drawing OWT Timber Screws

Product & Packaging Specs

Box, 8x8 Post Base

Item #: 8x8



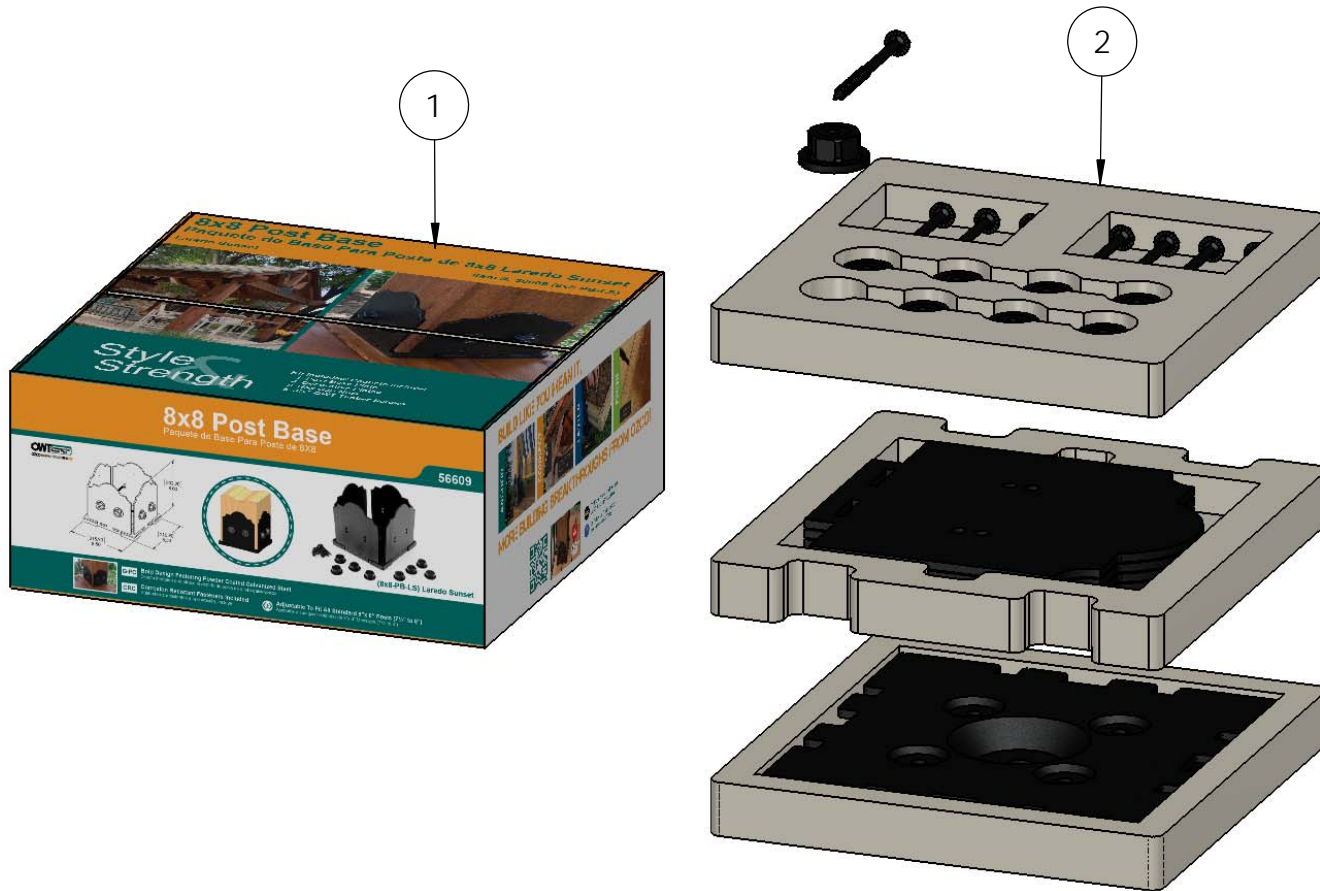
Material: Corrugated Paper
 Finish: See Artwork
 Weight: 0.19 LBS
 Scale: 1:5
 Last updated: 9/6/2016

56609-10

Product & Packaging Specs

56609 Packing

Item #: Box packing



ITEM NO.	QTY.	PART NUMBER	DESCRIPTION
1	1	Post Base Kit Boxes	Box, 8x8 Post Base
2	1	56609-10	8x8 Post Base (8x8-PB-LS)

- items not shown:
- installation instructions
 - parts wrapped in packing foam sheet

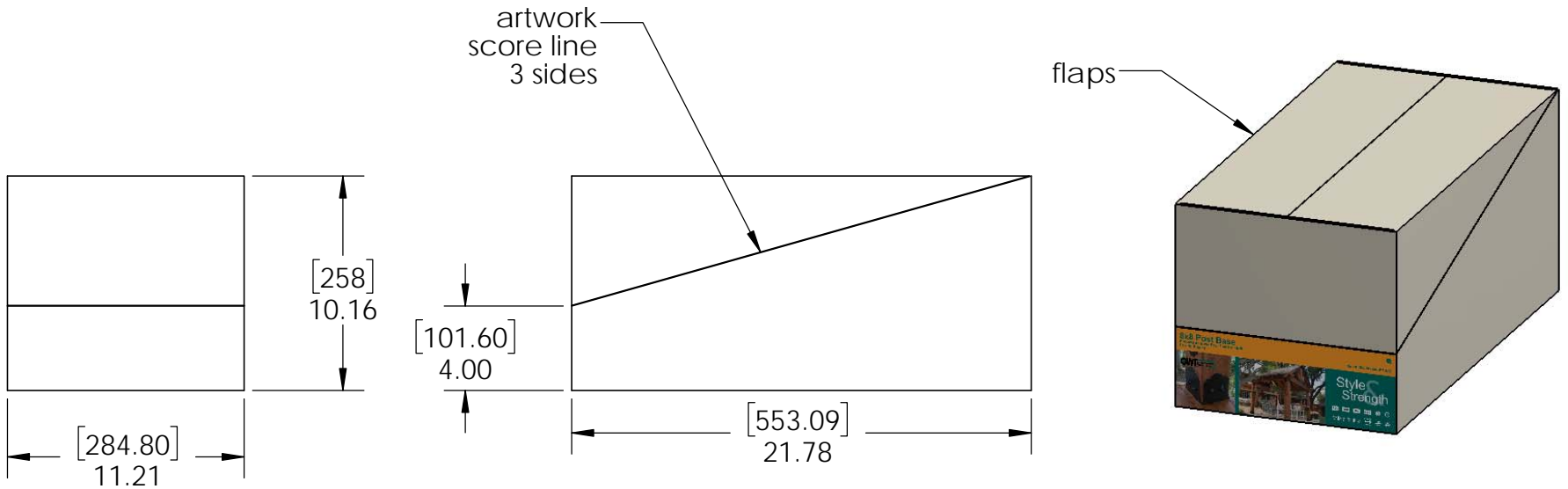
Weight: 16.062 LBS
 Scale: 1:4
 Last updated: 9/6/2016

56609-10

Product & Packaging Specs

Case, 8x8 Post Base Box

Item #: 8x8



Material: Corrugated Paper
 Finish: Natural
 Weight: 1.26 LBS
 Scale: 1:8
 Last updated: 9/6/2016

56609-10

Product & Packaging Specs

56609 Packing
 Item #: Case packing



Weight: 64.33 LBS
 Scale: 1:4
 Last updated: 9/6/2016

56609-10



OZCO BUILDING PRODUCTS

Product & Packaging Specs

56609 Packing

Item #: Pallet packing

Item #: **56609** | **8x8-PB-LS**

8X8 Post Base Laredo Sunset

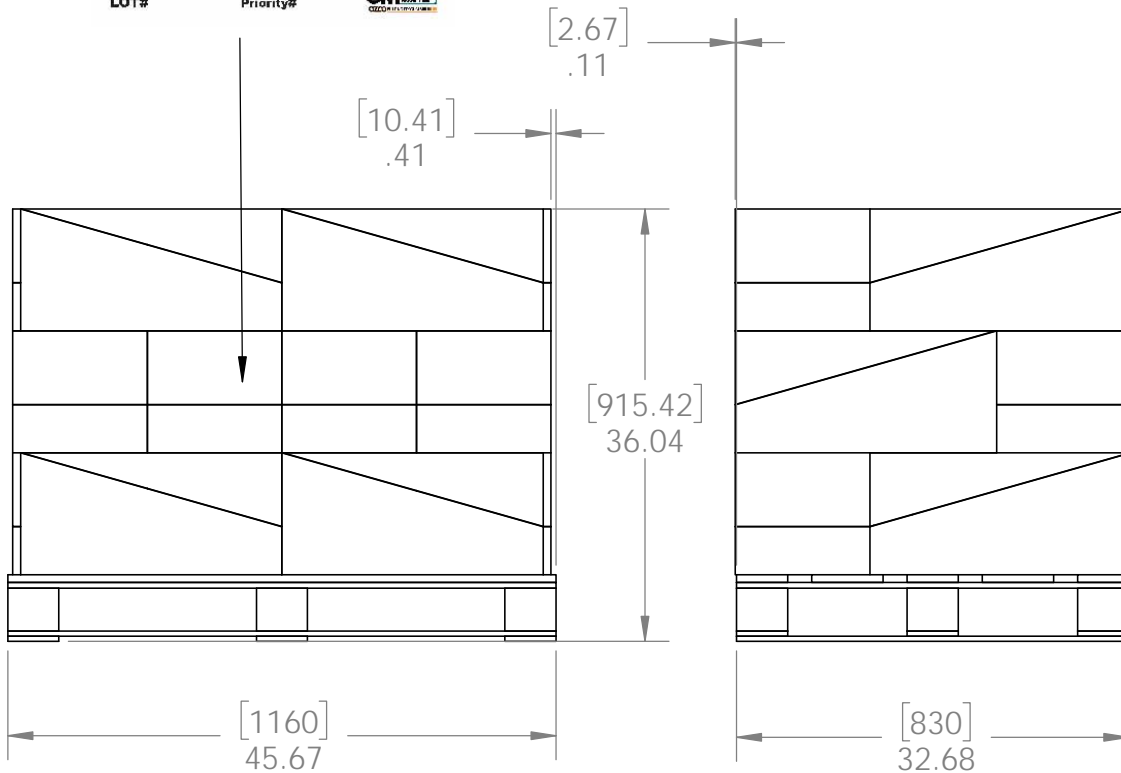
PALLET | **72 pcs**

SKU#: **56809**

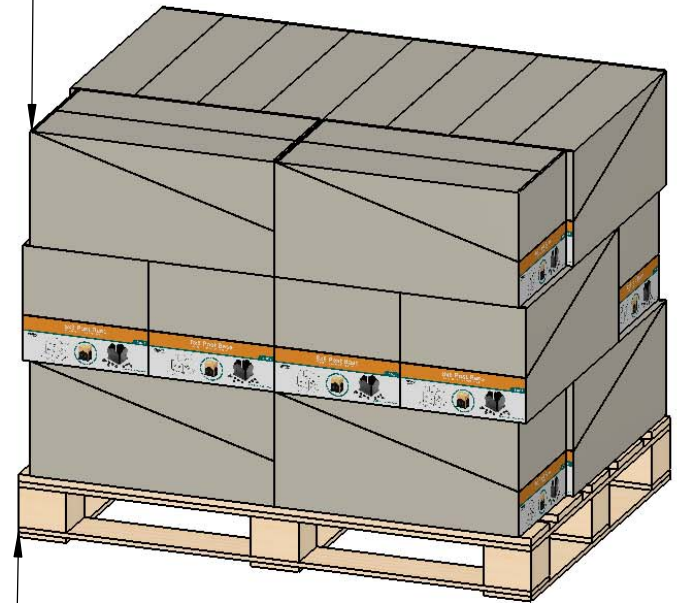


Weight: **1194 lbs**

LOT# Priority#



Total number of cases: 18
Total number of pieces:
18x4=72 pieces on pallet



C pallet



additional pallet packing instructions

- plywood on top layer
- strap to pallet
- clear wrap around boxes

Weight: 1194 LBS
Scale: 1:16
Last updated: 9/6/2016

56609-10