

SANIAlarm

Saniflo provides an efficient solution that instantly alerts the homeowner of an abnormal water level inside the pump preventing inappropriate use and carry out a prompt intervention.

Part# 050

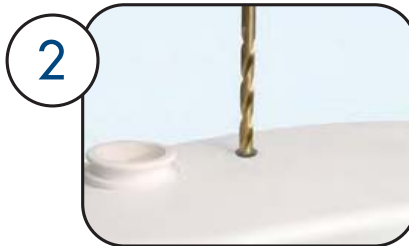


The SaniAlarm has a level pressure switch that triggers an alarm fixed on the top of the unit if the volume of water exceeds the maximum allowed level. The alarm emits a continuous 80 dB warning sound until it is switched off or the problem is rectified. The SaniAlarm is battery operated and can be installed on most Saniflo macerating units and drain water pumps.

**Suitable for use with Saniplus, Sanibest Pro, Sanipack, Sanigrind Pro and Sanivite*



1 Install two AA batteries (not included)



2 Drill a 3/8" diameter hole on top of the case where indicated.



3 Insert the tube and position the Sanialarm on top.



4 Turn the switch to the ON position.