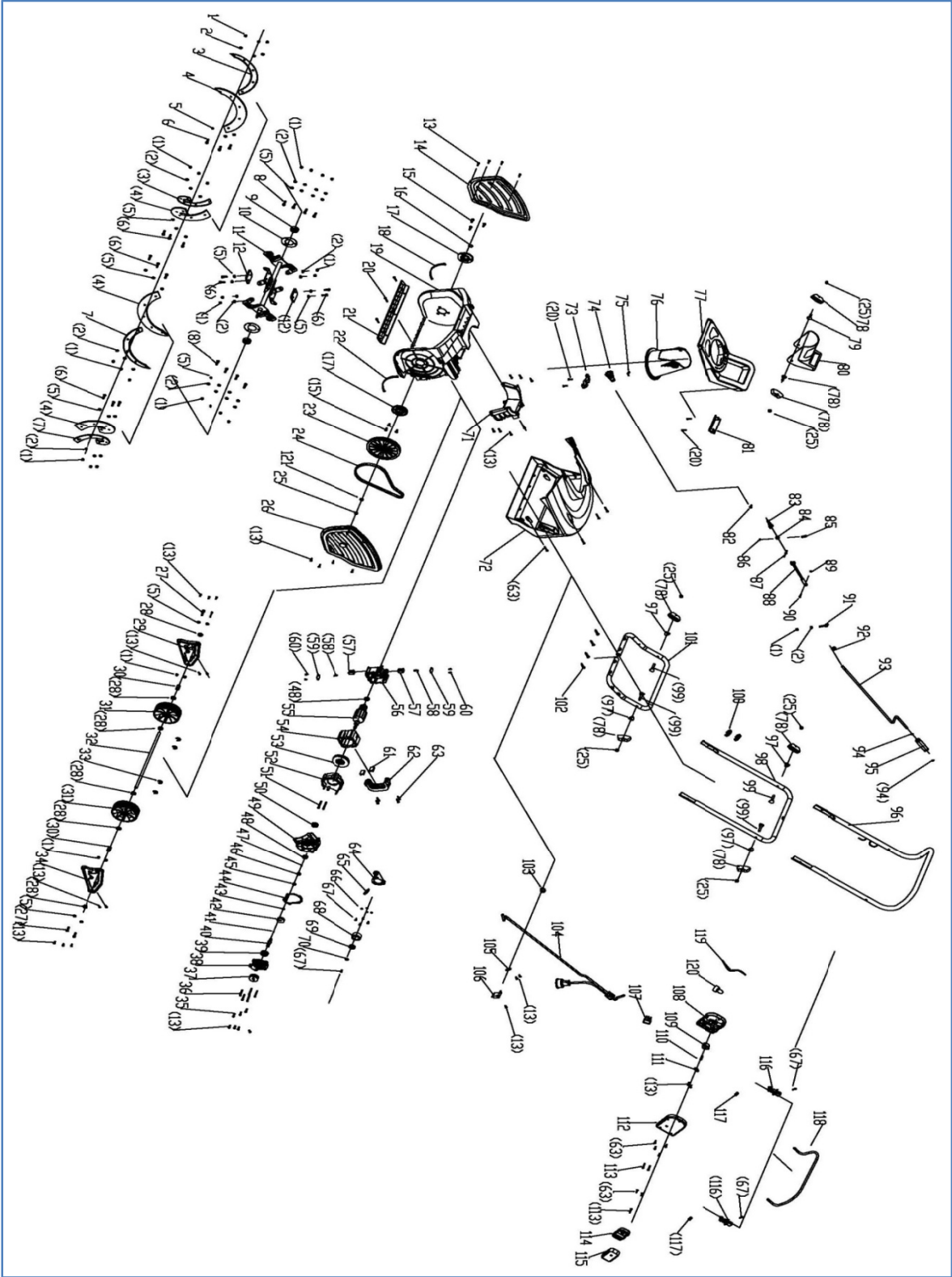


# SnowBlaster

## EXPLODED VIEW



# ***SnowBlaster***

## **PARTS LIST**

Part#	Stock#	Description
1	56663-001	Locknut M6
2	56663-002	Washer 6
3	56663-003	Right Fixing Plate
4	56663-004	TPU/Rubber Plate
5	56663-005	Washer 6
6	56663-006	Screw M6x16
7	56663-007	Left Fixing Plate
8	56663-008	Screw M6x16
9	56663-009	Bearing 6202-2Z
10	56663-010	Keep Plate
11	56663-011	Shaft Assembly
12	56663-012	Small TPU/Rubber Plate
13	56663-013	Screw ST4.2x13
14	56663-014	Right Cover
15	56663-015	Screw M5x12
16	56663-016	Snap Ring 15
17	56663-017	Bearing Housing
18	56663-018	Right Collision Strip
19	56663-019	Main Housing
20	56663-020	Tapping Screw ST4.2x22
21	56663-021	Scraper
22	56663-022	Left Collision Strip
23	56663-023	Big Pulley
24	56663-024	Belt PJ670
25	56663-025	Locknut M8
26	56663-026	Left Cover
27	56663-027	Screw M6x30
28	56663-028	Washer 10
29	56663-029	Right Metal Support
30	56663-030	Spacer
31	56663-031	Roller
32	56663-032	Roller Shaft
33	56663-033	Cotton Pin 2x20
34	56663-034	Left Metal Support
35	56663-035	Screw M4x16
36	56663-036	Screw ST4.2x40
37	56663-037	Small Pulley
38	56663-038	Bearing Housing
39	56663-039	Bearing 6201-2Z
40	56663-040	Output Shaft
41	56663-041	Semicircular Key
42	56663-042	Big Gear
43	56663-043	Snap Ring 10
44	56663-044	Oil Seal
45	56663-045	Nut M8

Part#	Stock#	Description
46	56663-046	Small Gear
47	56663-047	Flat Key 3x12
48	56663-048	Bearing 608-2Z
49	56663-049	Gear Box
50	56663-050	Bearing 6001-2Z
51	56663-051	Screw ST4.2-65
52	56663-052	Lower Motor Housing
53	56663-053	Impeller
54	56663-054	Stator
55	56663-055	Rotor
56	56663-056	Upper Motor Housing
57	56663-057	Brush Holder
58	56663-058	Carbon Brush
59	56663-059	Keep Plate
60	56663-060	Screw ST3.2x9.5
61	56663-061	Shock Pad
62	56663-062	Motor Keeper
63	56663-063	Screw ST4.2x16
64	56663-064	Idler Arm Assembly
65	56663-065	Extension Spring
66	56663-066	Washer 4
67	56663-067	Screw M4x12
68	56663-068	Flat Idler
69	56663-069	Bearing 6000-2Z
70	56663-070	Washer 5
71	56663-071	Fixing Seat
72	56663-072	Main Cover
73	56663-073	Lever Keeper
74	56663-074	Chute Direction Control Gear
75	56663-075	Resistance Washer
76	56663-076	Chute
77	56663-077	Handle
78	56663-078	Knob
79	56663-079	Screw M8x25
80	56663-080	Chute Deflector
81	56663-081	Blade
82	56663-082	Screw ST4.2x9.5
83	56663-083	Lever
84	56663-084	Connector
85	56663-085	Shaft
86	56663-086	Cotton Pin 2x14
87	56663-087	Rivet 4x20
88	56663-088	Lower Chute Crank
89	56663-089	Locknut M4
90	56663-090	Screw M4x20

# ***SnowBlaster***

Part#	Stock#	Description
91	56663-091	Eye Bolt
92	56663-092	Rubber Ring
93	56663-093	Upper Chute Crank
94	56663-094	Snap Ring 8
95	56663-095	Handle Grip
96	56663-096	Upper Frame
97	56663-097	Saddle Washer
98	56663-098	Middle Frame
99	56663-099	T-bolt
100	56663-100	Cable Clip
101	56663-101	Lower Frame
102	56663-102	Screw ST6.3x38
103	56663-103	Cable Jacket 7P-2
104	56663-104	Power Cord
105	56663-105	Big Cable Keeper
106	56663-106	Circuit Breaker
107	56663-107	Switch
108	56663-108	Switch Housing L
109	56663-109	Starter Button
110	56663-110	Spring
111	56663-111	Small Cable Keeper
112	56663-112	Switch Housing R
113	56663-113	Screw ST4.2x25
114	56663-114	Switch Seat R
115	56663-115	Switch Seat L
116	56663-116	Switch Actuator
117	56663-117	Spring
118	56663-118	Handle Bar