

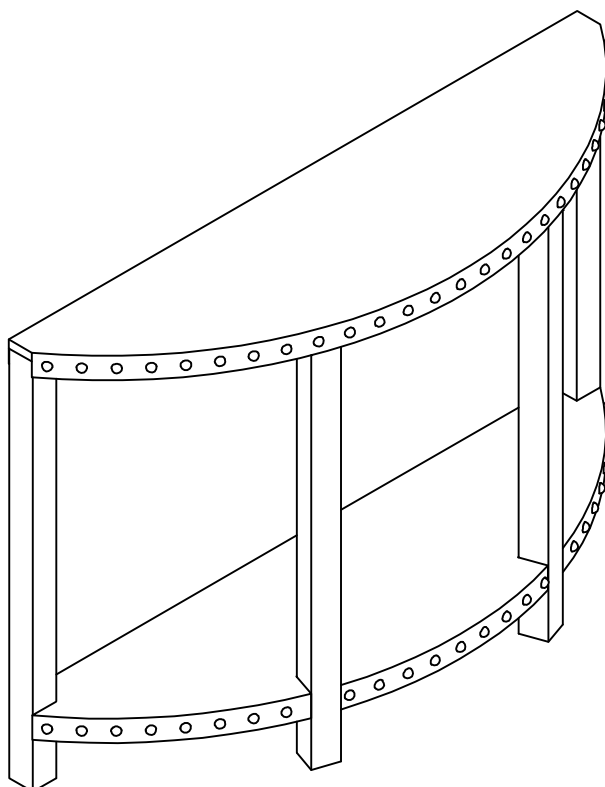
HOME DECORATORS COLLECTION

HDC#9927300970 MFG#CX00178
NAILHEAD CONSOLE TABLE 32"Hx48"W WASHED OAK

ASSEMBLY INSTRUCTIONS

**Note:1.Before assembly,please be sure to work on a sofa,
flat surface to avoid any damage to the finish.**
**2.You need at least 2 people to finish the assembly
of this product.**

Made In China

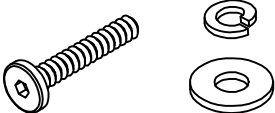



BEFORE ASSEMBLY

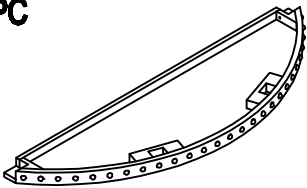
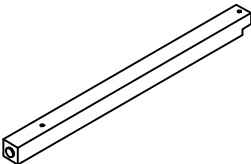
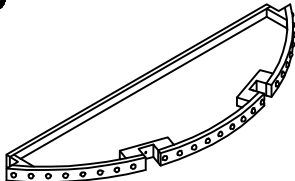
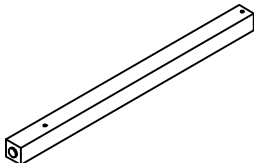
IMPORTANT NOTE: READ CAREFULLY BEFORE ASSEMBLY TO PREVENT DAMAGE TO PARTS. FOLLOWING INSTRUCTIONS LISTED BELOW IN THE PROPER SEQUENCE AS NUMBERED TO ASSURE FAST,EASY AND CORRECT ASSEMBLY.

THANK YOU FOR PURCHASING TIS QUALITY PRODUCT.BE SURE TO CHECK ALL PACKING MATERIAL CAREFULLY FOR SMALL PARTS,WHICH MAY HAVE CAME LOOSE INSIDE THE CARTON DURING SHIPMENE.COUNT ALL PARTS AND MATERIAL HARDWARE,COMPARE WITH PARTS LIST TO BE SURE ALL PARTS ARE PRESENT.IF ANY PARTS ARE MISSING OR DAMAGED,PHONE,FAX OR MAIL TO OUR CUSTOMER SERVICE DEPARTMENT.FOR EFFICIENT AND SPEEDY SERVICE,PLEASE INDICATE THE MODEL NUMBER AND CODE LETTER OF PART NEEDED.

HARDWARE LIST

ROUND HEAD BOLT FLAT WASHER SPRING WASHER 8PC  (1)	ALLEN KEY 1PC  (2)	
--	--	--

PARTS LIST

TOP FRAME 1PC  A	LEG 2PCS  B	SHELF 1PC  C
LEG 2PCS  D		

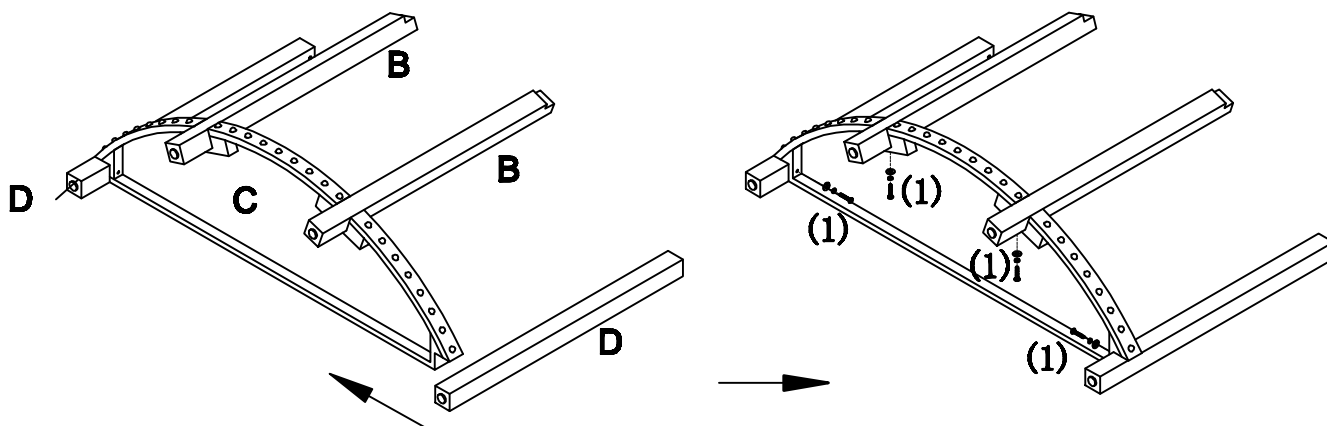
NOTE: THE SURFACE WITH THE STICKER IS THE BACK SIDE.

STEP 1: ASSEMBLE LEG (B) AND (D) AND SHELF (C)

.PUT LEGS (B) AND (D) ONTO SHELF (C)

.USE ROUND HEAD BOLT, SPRING WASHER AND FLAT WASHER (1) TO ASSEMBLE SHELF (C) AND LEGS (B) AND (D) TOGETHER BY ALLEN KEY (2) AS SHOWN.

PLEASE ADJUST LEGS (B) AND (D) GENTLY, DO NOT FULLY TIGHTEN UNTIL ALL SHELF AND TOP FRAME ARE IN PLACE AND EVEN.



STEP 2: ASSEMBLE TOP FRAME (A)

.INSERT LEGS (B) AND (D) INTO 4 HOLES UNDER THE TOP FRAME (A)

.USE ROUND HEAD BOLT, SPRING WASHER AND FLAT WASHER (1) TO ASSEMBLE TOP FRAME (A) AND LEGS (B) AND (D) TOGETHER AS SHOWN.

ADJUST LEGS (B) AND SHELF (C) GENTLY, FULLY TIGHTEN ROUND HEAD BOLT, SPRING WASHER AND FLAT WASHER (1) WHEN SHELF ARE IN PLACE AND EVEN.

