



SETTING UP YOUR R300 SPRAYER 190436



1. Assemble Hose To Tank

IMPORTANT: Do not attempt to heat or alter hose, hose nut, or barb prior to assembly.

1. Align hose barb tabs, push hose barb into tank until it stops (**See Figure A**).
2. Slide hose nut into place and turn clockwise to tighten. (**See Figure B**).

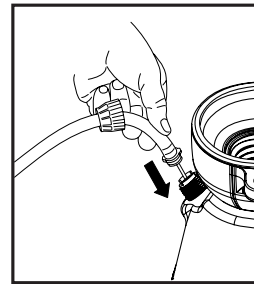


Figure A

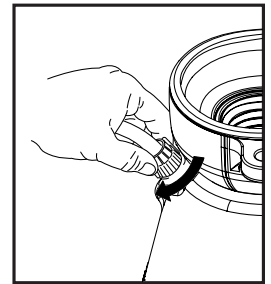


Figure B

NOTE: Do not use tools to tighten hose nut.

2. Assemble Wand & Nozzle

Place nozzle onto the end of the wand assembly and tighten securely. (**See Figure C**)

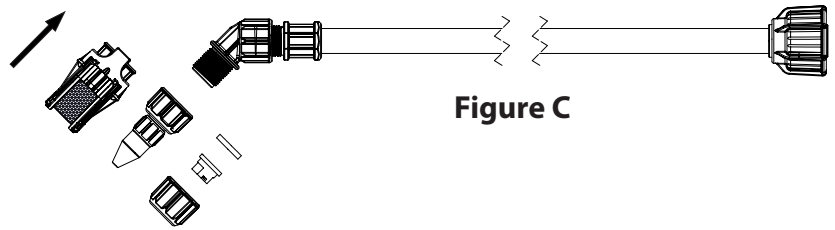


Figure C

Configuration for
nozzle tip sprayers

3. Assemble Shut-off to Wand

Screw on Wand Assembly to end of Shut-off and tighten securely. (**See Figure D**)

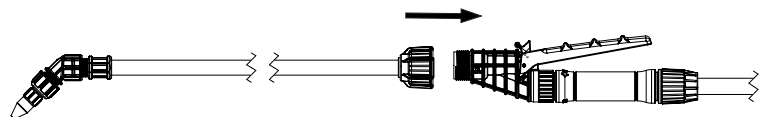
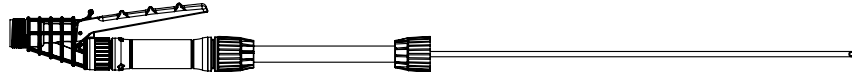


Figure D

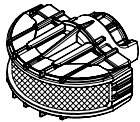
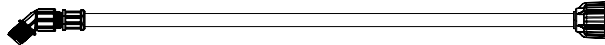
PARTS INCLUDED WITH YOUR
R300 SPRAYER
190436



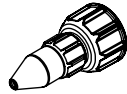
181819
SHUT-OFF ASSEMBLY



182112
21" SS WAND ASSEMBLY



182187
HIGH FOAM
NOZZLE



181823
ADJUSTABLE
NOZZLE BRASS



180097
NOZZLE TIP
HIGH VOLUME
(RED)



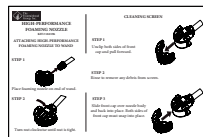
180168
NOZZLE TIP
LOW VOLUME
(YELLOW)



181812
NOZZLE FLAT SEAL



181804
NOZZLE CAP NUT



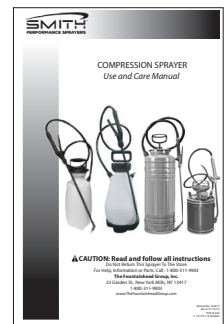
182218
FOAMING NOZZLE
CARD



181080
CARRYING STRAP



182618
WARRANTY CARD



182617
MANUAL