

# Instruction Sheet

## Kit Number: 72601200

### MELTBUDDY™ ICE MELT SPREADER KIT



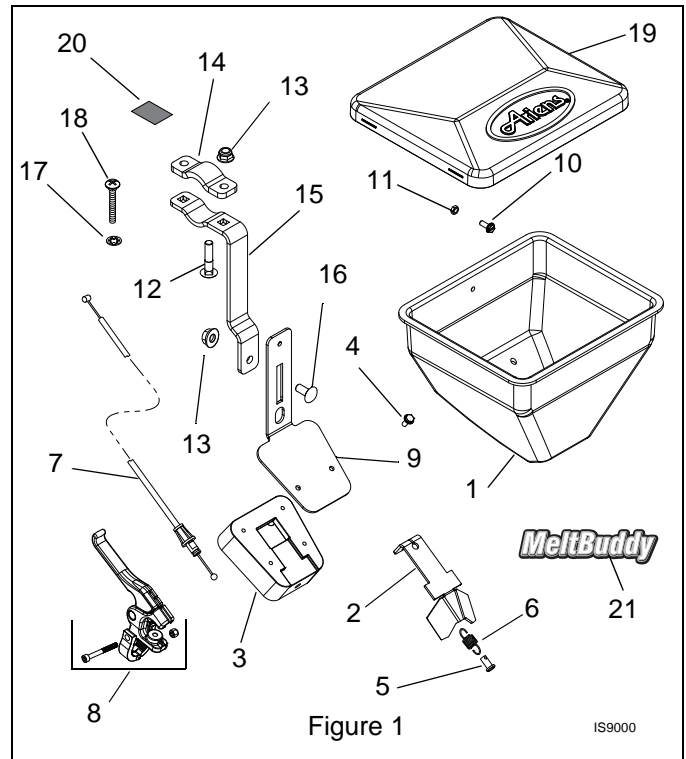
**WARNING: FAILURE TO FOLLOW INSTRUCTIONS** could result in personal injury and/or damage to unit.

Read, understand, and follow all safety practices in Owner/Operator Manual before beginning.

#### Package Contents

Check contents of your kit for the parts listed (Figure 1):

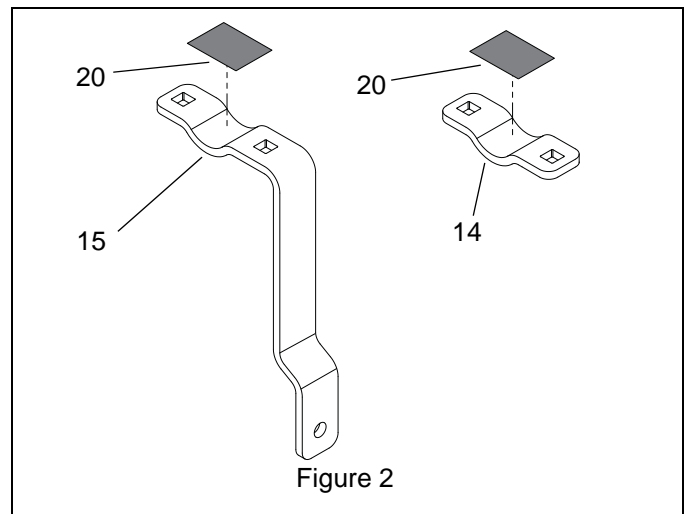
Item	Part No.	Qty.	Description
1	03848000	1	Hopper
2	03848551	1	Gate Bracket
3	03848200	1	Base
4	07400040	6	10-24 x 1/2 in. Hex Stainless Steel BosScrew
5	06809700	1	1/4 x 13/32 in. Clevis Pin
6	08300432	1	Extension Spring
7	06900403	1	Cable
8	06900410	1	Lever Assembly
9	03854751	1	Base Bracket
10	06100137	1	10-24 x 1/2 in. Hex Washer Head Stainless Steel Screw
11	06536000	1	10-24 Locking Nylon Nut with Insert
12	06212100	2	5/16 x 1-1/2 in. Round Head Square Neck Bolt
13	06545400	3	5/16-18 in. Nyloc Flange Nut
14	03387451	1	Top Clamp
15	03854851	1	Clamp Bracket
16	06220800	1	5/16-18 x 3/4 in. Round Head Square Neck Bolt
17	06305200	1	1/4 in. Internal Locking Washer
18	06100007	1	1/4-20 x 1-1/2 in. Oval Head Machine Screw
19	03848100	1	Cover
20	03965500	2	Clamp Grip
21	07800201	1	MeltBuddy™ Decal



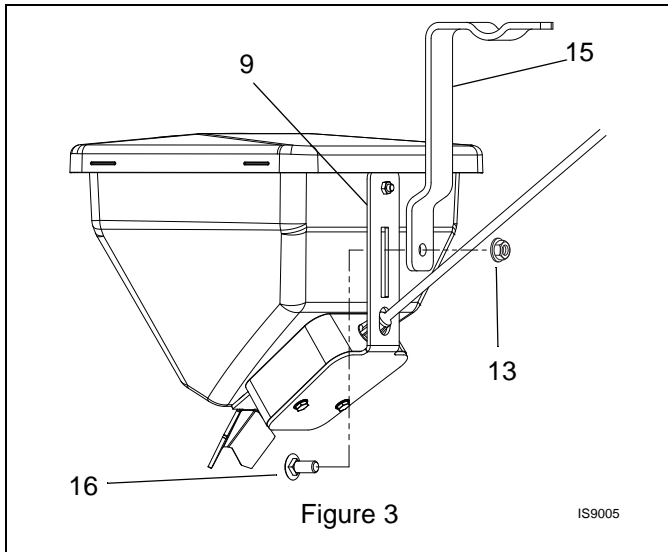
### ASSEMBLY

#### Mounting Hopper

1. Remove protective backing from clamp grip (item 20) and apply to inside center of clamp bracket (item 15). Remove protective backing from second clamp grip (item 20) and apply to inside center of top clamp (item 14). See Figure 2.

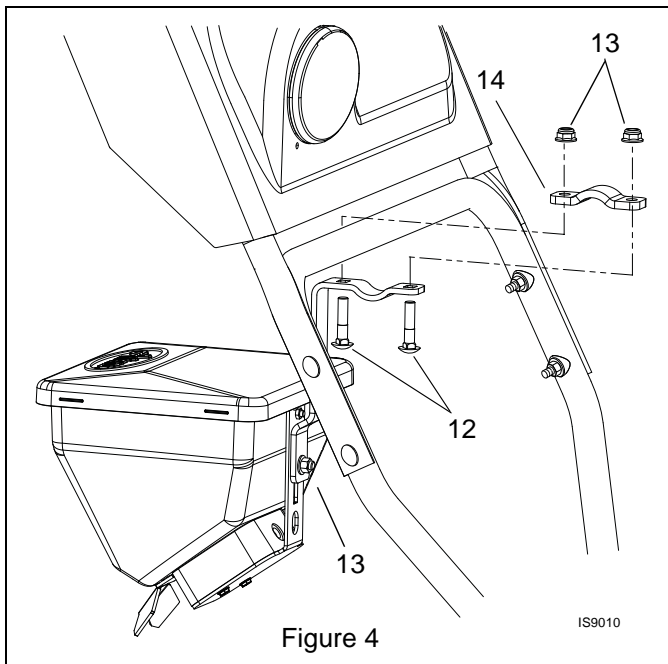


- From the back side, insert 5/16 x 3/4 round head square neck bolt (item 16) into slot in base bracket (item 9). Attach clamp bracket (item 15) to hopper assembly and secure with 5/16 nyloc flange nut (item 13). Do not fully tighten. See Figure 3.



- Position hopper assembly and top clamp (item 14) on handlebar crossbar. Secure with two 5/16 x 1-1/2 round head square neck bolts (item 12) and two 5/16 nyloc flange nuts (item 13). Ensure that hopper is level and centered on the crossbar and fully tighten hardware. Torque to 15 – 20 lbf-ft. Do not exceed 25 lbf-ft. See Figure 4.

**IMPORTANT:** Hardware must be fully tightened to ensure hopper stays in position when filled with product and during use.



- Position hopper at desired height and fully tighten 5/16 nyloc flange nut (item 13) installed in step 2.

**NOTE:** Ensure that the hopper assembly does not interfere with the access or operation of any cables, linkages or controls

### Clamping Control Lever

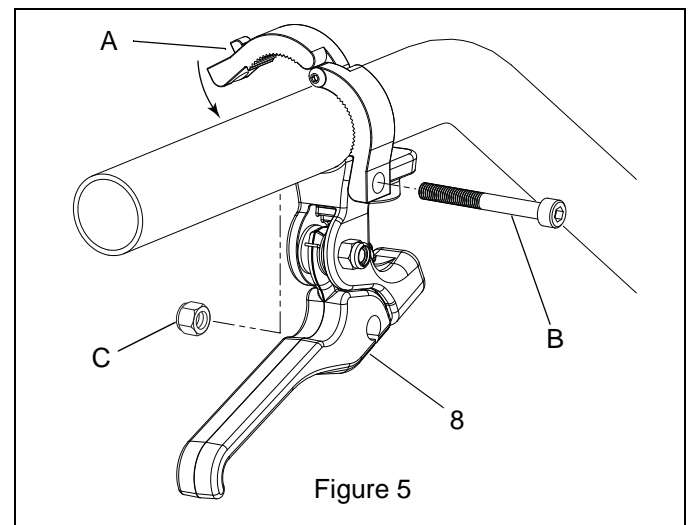
The control lever can be mounted on either side of the handlebars provided that a lever is not already in the chosen location. Ensure that the mounting location does not interfere with the operation of the auger or drive paddles or any other controls.

**NOTE:** Some Ariens models have a hex nut and bolt securing the control panel to the top right or left handlebar. On these models this hardware can be removed and the resulting hole used to mount the control lever directly to the handlebar without using the clamp (see *Attaching Control Lever* below). DO NOT drill holes in the handlebar!

- Position the control lever (item 8) under the handlebar.
- Wrap the clamp (item A), around the top of the handlebar and attach control lever with socket-head cap screw (item B) and hex nut (item C) provided with the control lever assembly. See Figure 5.
- Position the control lever assembly in the preferred location on the handlebar.

**IMPORTANT:** Ensure that the lever does not extend beyond the end of the handlebar and that it does not interfere with the operation of the drive or auger paddles or any other controls.

- Securely tighten the hardware. DO NOT overtighten.

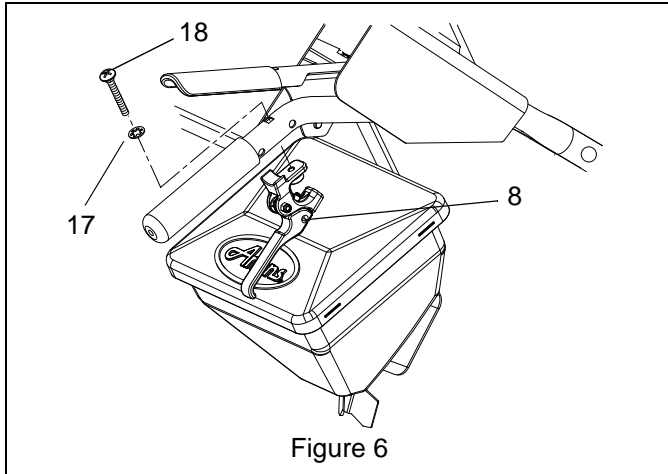


### Attaching Control Lever

For Ariens models with control panel or dash mounting holes on top of handlebar:

- Remove the 1/4 x 1-1/4 hex bolt and 1/4 hex nut from the right or left handlebar.
- Remove the clamp, socket head cap screw and hex nut from the control lever assembly.

- Position the control lever (item 8) under the handlebar and attach with 1/4-20 x 1-1/2 oval head machine screw (item 18) and 1/4 internal locking washer (item 17). The control panel or dash flange will be positioned between the control lever and the handlebar See Figure 6.

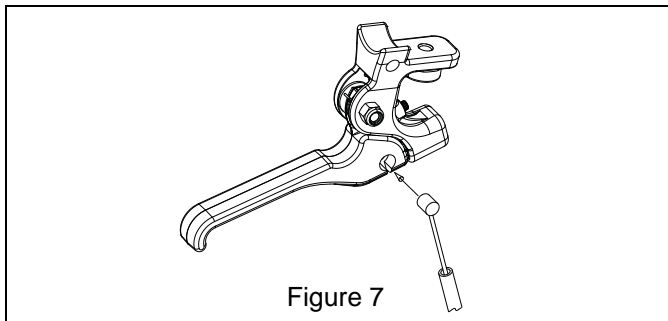


- Route cable from hopper to control lever. Ensure that cable does not interfere with moving parts or controls.

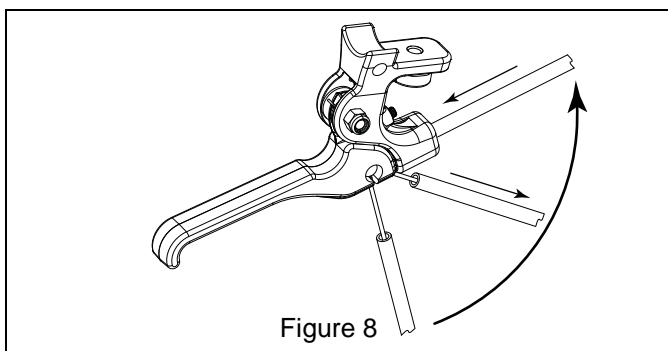
**NOTE:** Cable ties can be used to prevent the cable from contacting moving parts, controls or hot surfaces.

### Installing Control Cable

- Insert the barrel end of the cable into the slot on the bottom of the lever. See Figure 7.



- Rotate the cable up and forward.
- Pull the cable housing back and release to insert the end of the cable in the socket at the front of the lever assembly. See Figure 8.



## OPERATION

### Choosing a product

For best performance Ariens recommends using an ice-melt product with these characteristics:

- does not clump.
- non salt-based.
- non-corrosive.
- not harmful to landscaping, children or pets or environment.
- flows freely from the MeltBuddy.

Check with your Ariens Dealer for products that have these characteristics.

### Filling the Hopper

- Remove the lid from the hopper.
- Pour the ice melt material into the hopper.

**IMPORTANT:** Watch for clumps of product as it is poured into the hopper. Clumped product needs to be broken up or it could affect ice-melt flow.

- Tightly replace the lid.

### Spreading Ice Melt

**NOTE:** Occasionally check the contents of the hopper to ensure that the ice melt has not clumped since last use. Break up any clumps that are found. Replace lid tightly to keep out blowing snow.

- With the unit running, squeeze the control lever to open the chute and allow ice melt to flow.

**NOTE:** For best results the unit should be running to allow the normal vibration of the unit to agitate the ice melt.

- Release the control lever to stop the flow of ice melt.

## STORAGE

### Snow Season

During the snow season keep the cover on tightly and wipe melted snow off hopper after each use.

**NOTE:** If clumping occurs it may be necessary to empty the hopper after each use or choose a different ice-melt product.

### Off Season

Before storing unit remove the ice melt from the hopper.

- Empty the hopper.
- Rinse the hopper with clean water and allow to dry before replacing the lid.
- Store ice melt in dry area.