



AF-80TBS

80 lb BROADCAST SPREADER



READ AND FOLLOW ALL SAFETY RULES AND OPERATING INSTRUCTIONS BEFORE USING THIS EQUIPMENT

Safety Rules



This is the safety alert symbol. It is used to alert you to potential personal injury hazards. Obey all safety messages that follow this symbol to avoid possible injury or death.

Read and understand all safety rules and operating instructions before using this tractor attachment.

Follow all safety rules and operating instructions provided by your vehicle's manufacturer when using attachment.

Before filling hopper, become familiar with the operation of this Spreader.

Never allow children or untrained persons to operate vehicle or attachment.

Never use attachment near other persons to avoid personal injury.

Do not exceed the vehicle manufacturer's towed weight limit.

Reduce vehicle speed and allow extra stopping distance when towing heavy loads.

Reduce vehicle speed and towed weight when operating on slopes.

Operate up and down slopes, never across the face of slopes.

Avoid sudden turns or maneuvers.

Do not tow attachment on public roadways.

Do not remove warning decals from product.

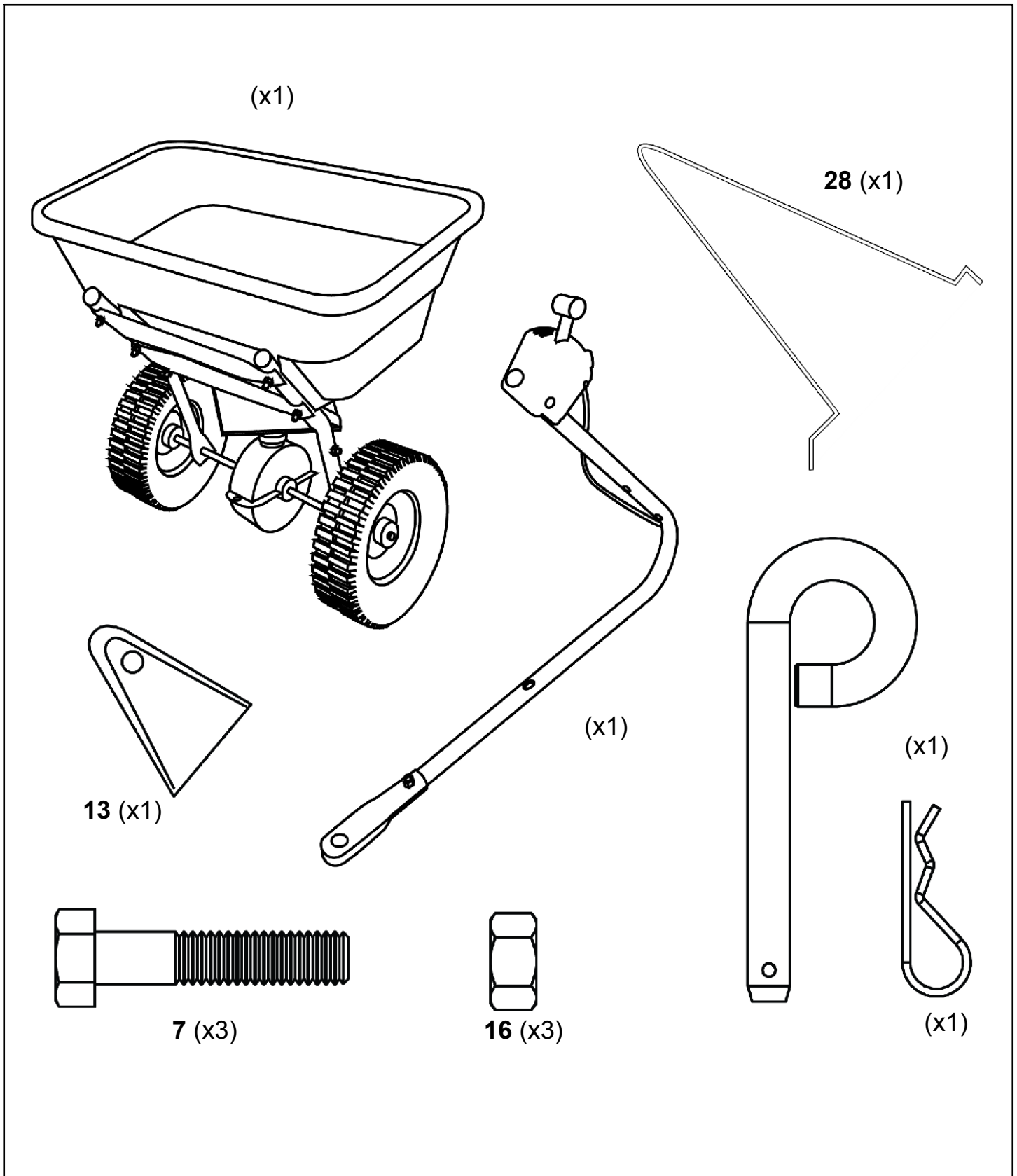
Check product for worn, loose, or damaged parts before each use. If any damage is present, repair the product before using.

Check product for loose or missing fasteners before each use. Tighten or replace fasteners as needed before using.

Do not exceed vehicle speed of 3 miles per hour when towing attachment.

Do not exceed attachments rated weight capacity of 80 pounds.

Carton Contents



TOOLS REQUIRED FOR ASSEMBLY:

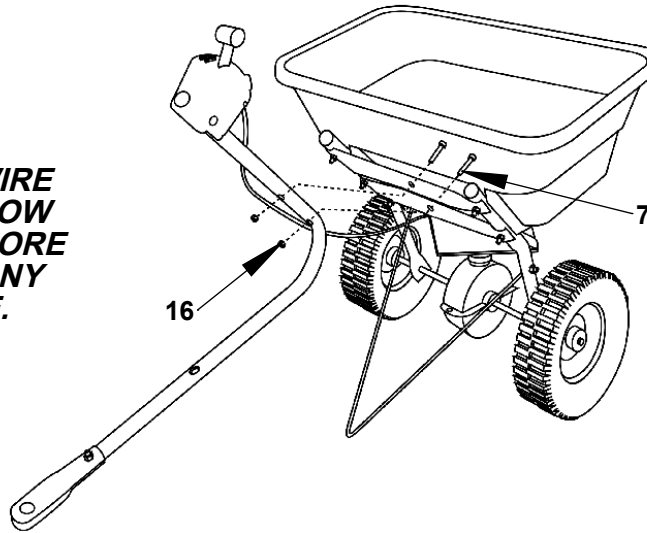
- 7/16" Wrench or Socket
- Pliers

Assembly Instructions

1

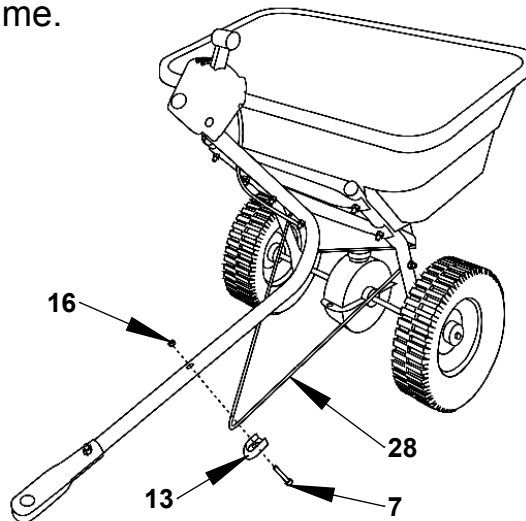
Attach Control Drawbar loosely to Spreader Body with hardware as shown.

MAKE SURE WIRE BRACE IS BELOW DRAWBAR BEFORE ATTACHING ANY HARDWARE.



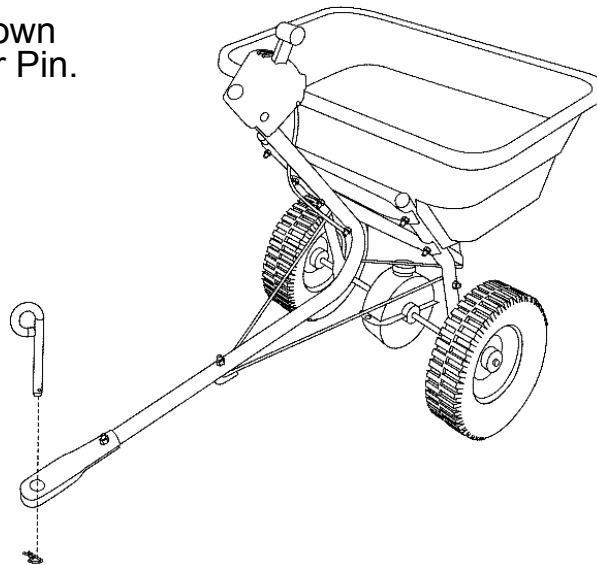
2

Attach Wire Brace and Brace Clip to Drawbar with hardware as shown. Tighten all hardware at this time.



3

Install Hitch Pin as shown and secure with Cotter Pin.



Operating Instructions

Before Using Broadcast Spreader:

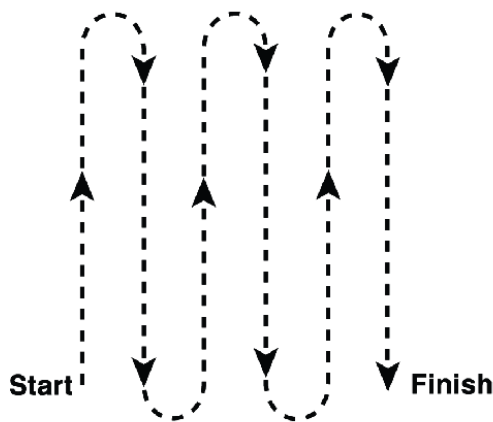
1. Read all Safety Rules found on page 1.
2. Make sure the drop holes in the bottom of the hopper are fully open with the Rate Control handle set on #30. If not, adjust control cable to allow for a fully open hopper at position #30.
3. Obtain proper setting for material to be used from the Setting Matrix.
4. Move stop bolt on range gauge assembly to proper setting.

How to use Broadcast Spreader:

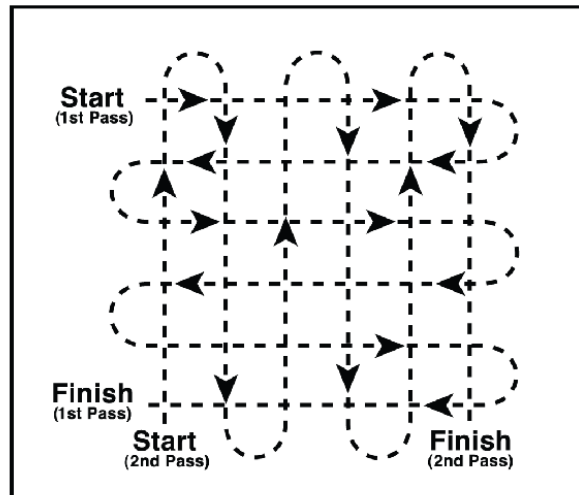
1. While moving forward, push control lever forward to the stop bolt. To stop, pull lever back to close flow holes before you stop moving.
2. When finished, empty any remaining material from hopper.

SUGGESTED SPREAD PATTERN

FULL RATE SETTINGS



HALF RATE SETTINGS



Periodic Maintenance:

- Tighten fasteners as needed before each use
- Thoroughly wash spreader before storage

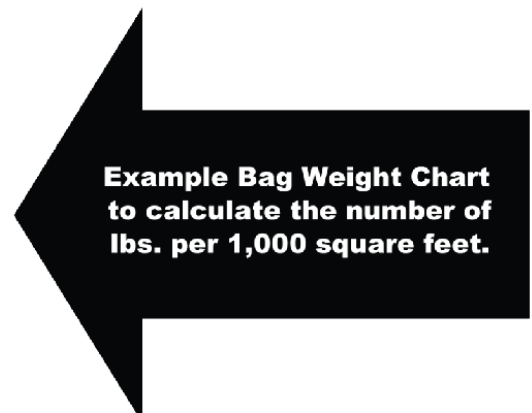
Operating Instructions

BROADCAST SPREADER SETTING MATRIX

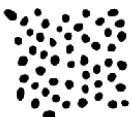


Look for EarthWay or Ev-N-Spred models on the bag for settings. If there is none listed, please use the comparison chart below as a guide to estimate your spreader setting. These settings are approximate and intended as a guide only.

Variations in physical characteristics of material applied, speed and surface roughness may require slightly different spreader settings. Due to the above conditions, the manufacturer makes no warranty as to the uniformity of coverage actually obtained from settings listed.

BAG WEIGHT	SQ/FT COVERAGE		
	5,000	10,000	15,000
	LBS/1000	LBS/1000	LBS/1000
5 LBS.	1.0	0.5	0.3
10 LBS.	2.0	1.0	0.7
15 LBS.	3.0	1.5	1.0
18 LBS.	3.6	1.8	1.2
20 LBS.	4.0	2.0	1.3
25 LBS.	5.0	2.5	1.7
30 LBS.	6.0	3.0	2.0
35 LBS.	7.0	3.5	2.3
40 LBS.	8.0	4.0	2.7
45 LBS.	9.0	4.5	3.0
50 LBS.	10.0	5.0	3.3



FERTILIZER

PARTICLE SIZES: LBS. PER 1,000 SQUARE FEET.	FINE/SMALL (SAND)	 SPREAD WIDTH	MEDIUM (HALF BB)	 SPREAD WIDTH	BIG (BB)	 SPREAD WIDTH
	SETTING		SETTING		SETTING	
1 LB.	11	5-7'	11	7-9'	12	9-12'
2 LBS.	13	5-7'	13	7-9'	13	9-12'
3 LBS.	14	5-7'	14	7-9'	14	9-12'
4 LBS.	16	5-7'	16	7-9'	15	9-12'
5 LBS.	17	5-7'	17	7-9'	17	9-12'
6 LBS.	18	5-7'	18	7-9'	18	9-12'
7 LBS.	19	5-7'	19	7-9'	19	9-12'
8 LBS.	20	5-7'	20	7-9'	20	9-12'
9 LBS.	22	5-7'	21	7-9'	22	9-12'
10 LBS.	23	5-7'	22	7-9'	24	9-12'

GRASS SEED

	FINE		COARSE	
2 LBS.	17	7'	18	8'
3 LBS.	19	7'	20	8'
4 LBS.	21	7'	22	8'
5 LBS.	23	7'	24	8'

5-Year Limited Warranty

EPI warrants this product free of defects in original workmanship and materials for a period of 5-Years to the end user with the original purchase receipt for at home use. If used for business, the warranty is 90-days.

If a manufacturing non-conformance is found, EPI at its discretion will repair or replace the part(s) or product at no charge provided the failure is not the result of incorrect installation, mishandling, misuse, tampering, or normal wear and tear as determined by EPI. EPI at its discretion may require that the part(s) or product be returned along with the original purchase receipt at owners' expense for examination and compliance with the terms of this warranty.

Do not return any product without first receiving authorization from EPI To seek remedy under this warranty, contact EPI at 574-848-7491 or write to EPI P.O. Box 547 Bristol, Indiana 46507 and describe the nature of the manufacturing defect.

SPECIFIC LIMITATIONS: This warranty covers only the part(s) or product; any labor charges associated with repair or replacement of non-conformances are specifically excluded. Due to the corrosive nature of most fertilizers and ice melt products, EPI makes no warranty against and specifically excludes part(s) or product degradation or failure due to corrosion or its effects. Clean and dry your spreader thoroughly after each use, as a preventative measure, coat all metal parts with a light oil or silicon spray.

In the space below record the purchase date of your Spreader.

Model Number **AF-80TBS** _____

Purchase Date _____

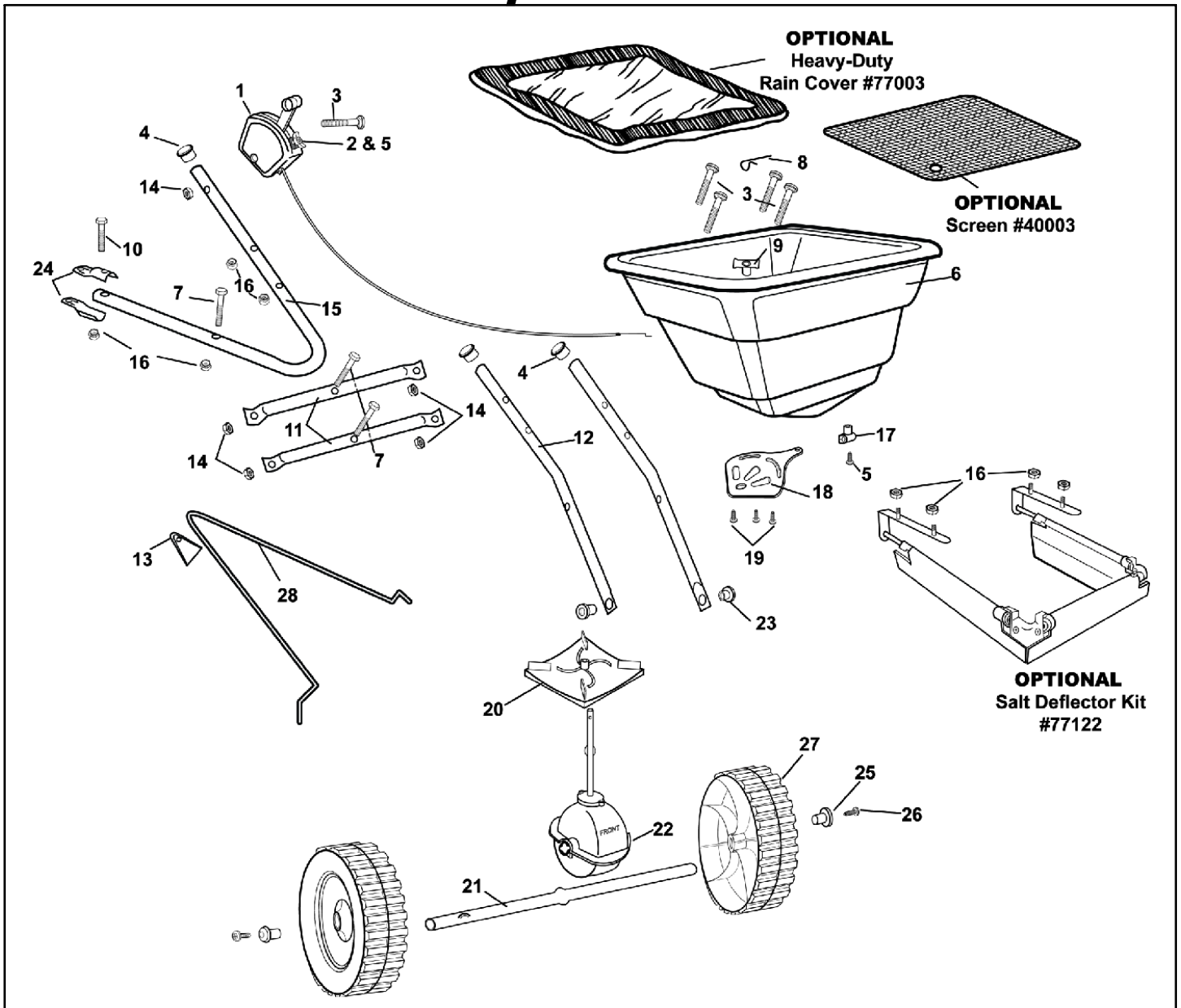
Keep this Owner's Manual and your receipt in a safe place for future reference.

After the five year warranty period all replacement parts may be ordered by calling EPI at 1-800-294-0671 or 1-574-848-7491

When ordering replacement parts, always give the following information:

- Product **80 lb Broadcast Spreader** _____
- Model Number **AF-80TBS** _____
- Part Number _____
- Part Description _____

Repair Parts



ITEM	PART NO	DESCRIPTION	ITEM	PART NO	DESCRIPTION
1	60514	CONTROL ASSEMBLY	17	12318	LOWER HOUSING CLIP
2	12222	INDICATOR-BROADCAST	18	12221	SHUT OFF PLATE
3	37108	1/4-20 X 1 3/4" CARRIAGE BOLT ZINC	19	31138	#8 X 3/8" PMT #8 HD COARSE BLACK
4	19132	7/8" TUBE PLUG	20	12248	IMPELLER ~ New Dished
5	32106	10-24 WING NUT ZINC	21	23510	AXLE (2050T)
6	60375	HOPPER ASSEMBLY	22	60404	GEAR BOX ASSEMBLY
7	31114	1/4-20 X 1 3/4" HHCS ZINC	23	12197	SPACER BEARING
8	33117	AGITATOR	24	44215	HITCH PLATE
9	12209	HOPPER BUSHING	25	12276	AXLE PLUG (2050SU)
10	31100	1/4-20 X 1 1/2 HHMS ZINC	26	31148	#10 X 1" TYPE A PHPS BLACK
11	25226	CROSS BRACE	27	12107	10" POLY WHEEL
12	25225	FRAME LOWER	28	43059	WIRE BRACE
13	12267	BRACE CLIP	OPT	77003	HEAVY DUTY RAIN COVER 13"X 18"
14	32100	1/4-20 HEX NUT ZINC	OPT	40003	SQUARE SCREEN
15	60239	CONTROL SUPPORT ASSEMBLY	OPT	77122	SALT DEFLECTOR KIT
16	32103	1/4-20 NYLON INS LOCKNUT ZINC			

Notes

OHIO *STEEL*
INDUSTRIES

MANUFACTURED IN THE U.S.A. FROM DOMESTIC
AND IMPORTED COMPONENTS



MODEL # AF-80TBS

(800) 652-2321