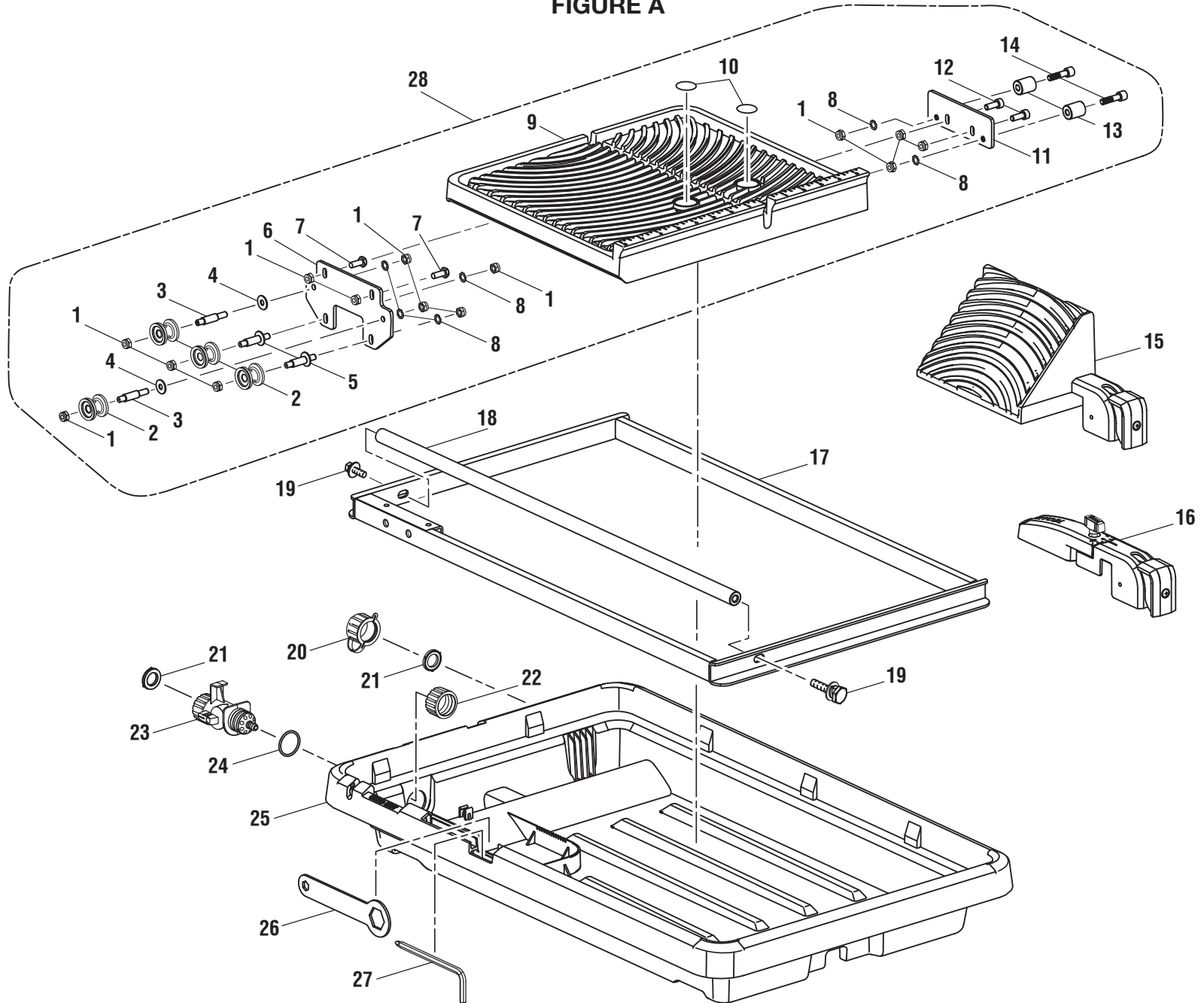


**RYOBI  
TILE SAW  
MODEL NO. WS731  
REPAIR SHEET**

RYOBI TILE SAW – MODEL NUMBER WS731

FIGURE A



## RYOBI TILE SAW – MODEL NUMBER WS731

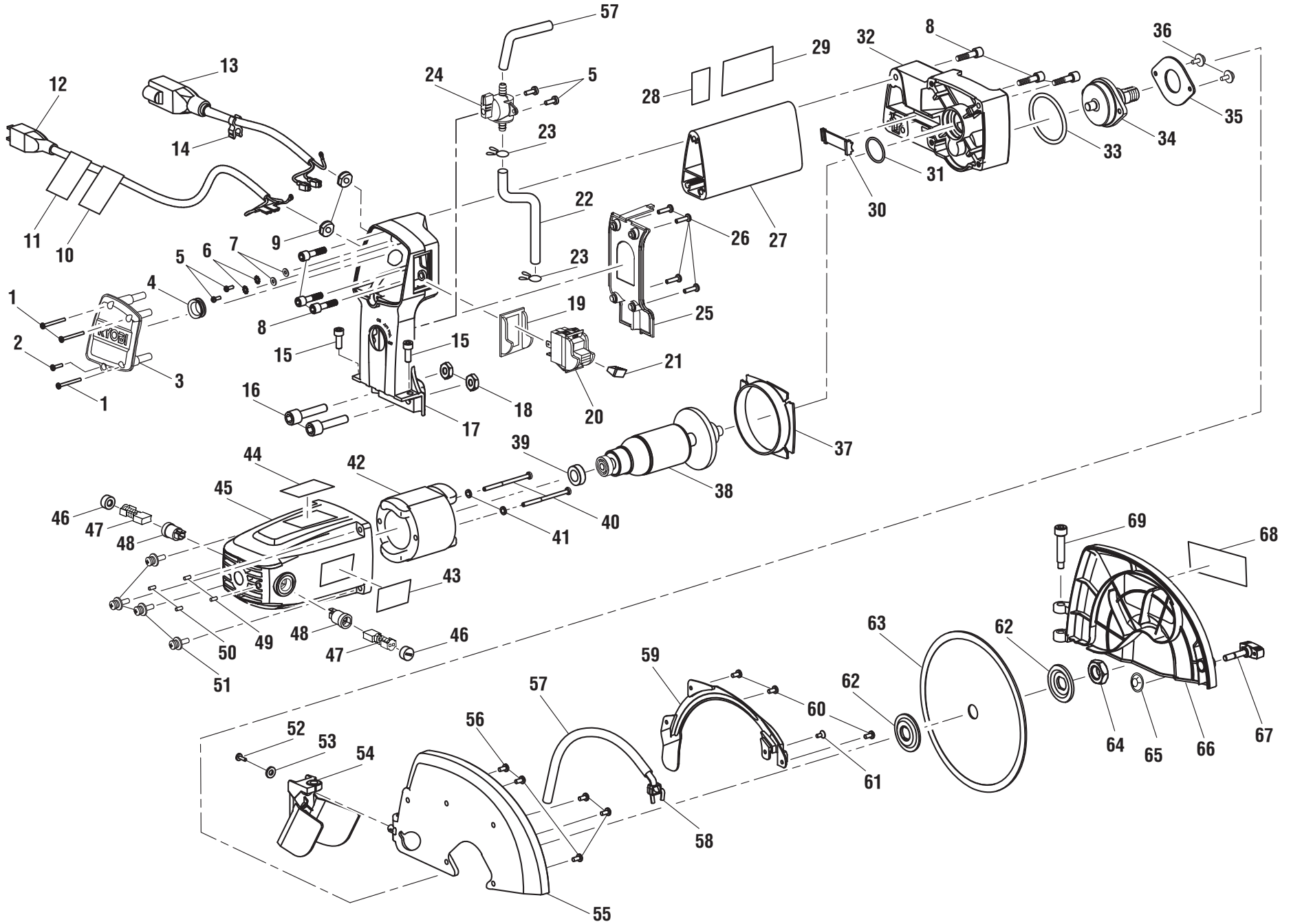
The model number will be found on a plate attached to the back support arm. Always mention the model number in all correspondence regarding your **TILE SAW** or when ordering repair parts.

### PARTS LIST FOR FIGURE A

KEY NO.	PART NUMBER	DESCRIPTION	QTY
1	089041029081	Lock Nut (M6).....	14
2	089041029082	Adjustable Roller. ....	4
3	089041029083	Roller Shaft .....	2
4	089041029084	Washer (D6 x D16 x 2t) .....	2
5	089041029085	Eccentric Shaft.....	2
6	089041029086	Left Roller Bracket .....	1
7	089041029087	Bolt (M6 x 16 mm).....	2
8	089041029088	Washer (M6) .....	6
9	089041029711	Easy Glide Table Assembly (Inc. Key No. 10) .....	1
10	089041029904	"No Hands" Warning Label. ....	2
11	089041029090	Right Roller Bracket .....	1
12	089041029058	Screw (M6 x 16 mm, Hex Soc. Hd.).....	2
13	089041029091	Roller Wheel. ....	2
14	089041029092	Screw (M6 x 32 mm, Special) .....	2
15	089041029705	Bevel Block Assembly .....	1
16	089041029706	Rip Guide Assembly.....	1
17	089041029079	Water Tray Frame. ....	1
18	089041029080	Slide Rod.....	1
19	089041029078	Screw w/Washers (M8 x 20 mm, Hex Hd.) .....	2
20	089041029704	Drainage Output Assembly. ....	1
21	089041029074	Rubber Gasket.....	2
22	089041029075	Water Inlet Knob .....	1
23	089041029073	Water Supply Valve Assembly .....	1
24	089041029072	O-Ring.....	1
25	089041029071	Water Tray. ....	1
26	089041029102	Wheel Wrench (10 mm x 23 mm).....	1
27	089041029103	Hex Key Wrench (M6 x 121 mm x 38 mm) .....	1
28	089041029712	Complete Easy Glide Table Assembly (Inc. Key Nos. 1-14) .....	1

RYOBI TILE SAW – MODEL NUMBER WS731

FIGURE B



## RYOBI TILE SAW – MODEL NUMBER WS731

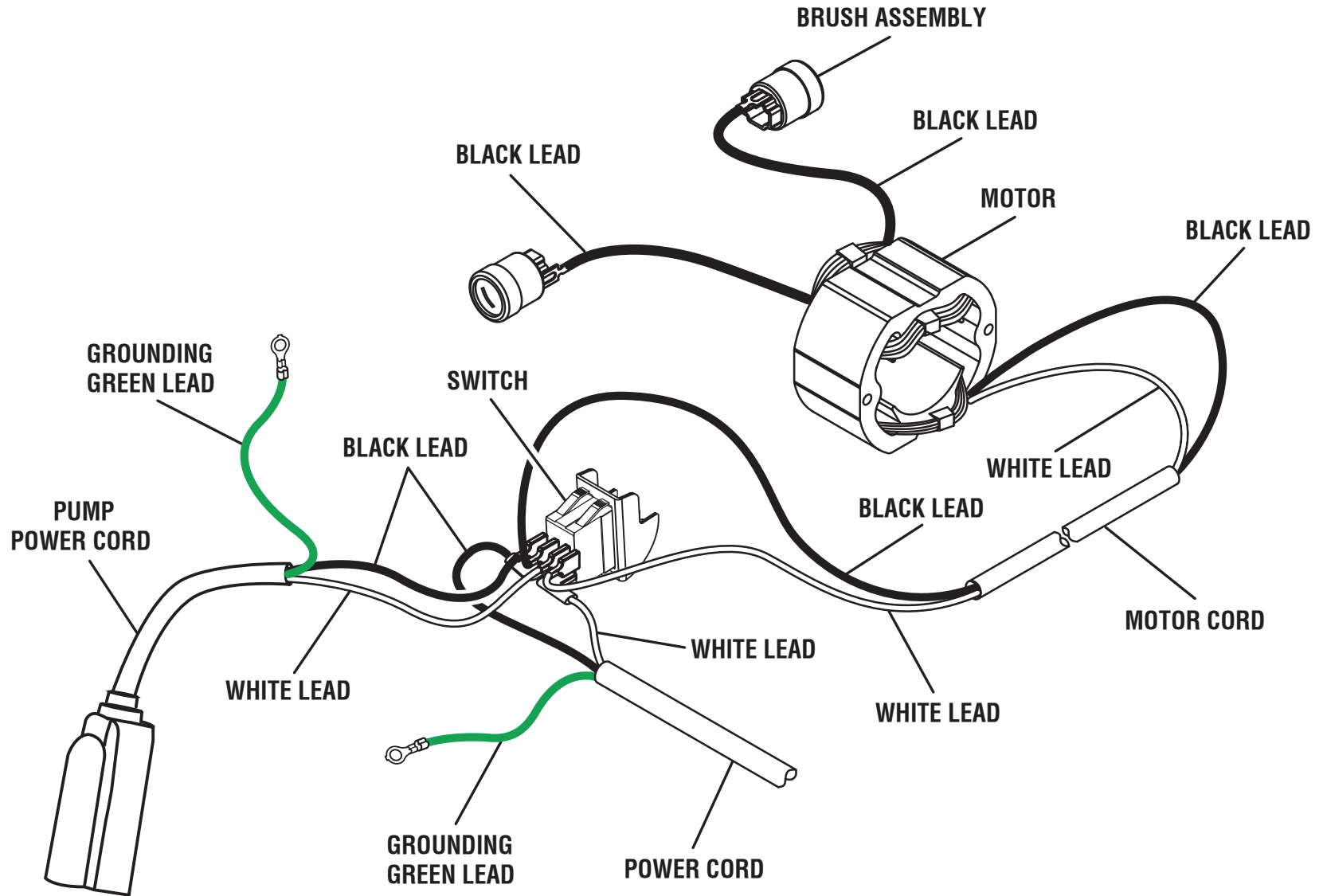
The model number will be found on a plate attached to the back support arm. Always mention the model number in all correspondence regarding your **TILE SAW** or when ordering repair parts.

### PARTS LIST FOR FIGURE B

KEY NO.	PART NUMBER	DESCRIPTION	QTY	KEY NO.	PART NUMBER	DESCRIPTION	QTY
1	089041029056	Screw (M3 x 28 mm, Pan Hd.).....	3	38	089041029707	Armature w/Bearings Assembly .....	1
2	089041029057	Screw (M3 x 12 mm, Pan Hd.).....	1	39	089041029033	Bearing Cover.....	1
3	089041029055	Outer Support Arm Cover .....	1	40	089170109178	Screw (M4.8 x 70 mm, Pan Hd.).....	2
4	089041029054	Grommet (3/8 in.).....	1	41	080035003040	Washer (M5).....	2
5	080035003121	Screw (M4 x 8 mm, Pan Hd.).....	4	42	089041029036	Field (Stator) .....	1
6	089041029052	Spring Washer (M4) .....	2	43	089041029903	Logo Label (Motor Housing).....	1
7	089041029051	Washer (M4).....	2	44	080009002909	Warning Label (English) .....	1
8	089041029044	Screw (M6 x 25 mm, Special).....	6	45	089041029708	Motor Housing Assembly (Inc. Key Nos. 43-44 and 48-50) .....	1
9	089041002061	Strain Relief .....	2	46	089041029038	Brush Cap.....	2
10	089041002905	Danger Label (GFCI) .....	1	47	089041029039	Brush Assembly.....	2
11	089041002906	Warning Label (French/Spanish) .....	1	48	089041029040	Brush Holder .....	2
12	089041029703	Power Cord Assembly (Inc. Key Nos. 10-11) .....	1	49	089041029042	Screw (M5 x 6 mm, Hex Soc. Hd.) .....	2
13	089041029049	Pump Receptacle Assembly .....	1	50	089041029043	Screw (M5 x 8 mm, Hex Soc. Hd.) .....	2
14	089041029048	Cord Clamp .....	1	51	089041029041	Screw w/Washers (M5 x 20 mm, Pan Hd.).....	4
15	089041029058	Screw (M6 x 16 mm, Hex Soc. Hd.) .....	2	52	089041029017	Screw (M3 x 10 mm, Pan Hd.).....	1
16	089041029059	Screw (M8 x 38 mm, Hex Soc. Hd.) .....	2	53	089041029016	Washer (M3).....	1
17	089041029060	Support Arm .....	1	54	089041029015	Splash Guard.....	1
18	089041029061	Hex Nut (M8).....	2	55	089041029014	Inner Guard.....	1
19	089041029064	Switch Guard .....	1	56	089041029013	Screw (M5 x 12 mm).....	5
20	089041029063	Switch (Inc. Key No. 21) .....	1	57	089041029012	Water Tube (ID1/4 in. x 3/8 in. x 502 mm) .....	1
21	089041029062	Switch Key.....	1	58	089041029011	Spray Nozzle .....	1
22	089041029068	Hose (ID1/4 in. x OD 3/8 in. x 350 mm).....	1	59	089041029010	Tube Cover.....	1
23	089041029067	Hose Clamp.....	2	60	089041029008	Screw (M4.2 x 6 mm, Pan Hd.).....	3
24	089041029069	Valve Assembly.....	1	61	089041029009	Screw (M3.5 x 6 mm).....	1
25	089041029065	Inner Support Arm Cover .....	1	62	089041029006	Outer Washer.....	2
26	080035003154	Screw (M4 x 12 mm, Pan Hd.).....	4	63	***	Tile Cutting Wheel .....	1
27	089041029709	Extrusion Assembly (Inc. Key Nos. 28-29) .....	1	64	089041029005	Arbor Nut (5/8 in.) .....	1
28	080009002908	Pump Warning Label .....	1	65	089041029004	Push Nut (M5).....	1
29	089041029901	Data Label .....	1	66	089041029710	Outer Wheel Guard (Inc. Key No. 68) .....	1
30	089041029045	Motor Outlet Cover.....	1	67	089041029002	Wheel Guard Lock (M6 x 22 mm).....	1
31	089041029028	O-Ring .....	1	68	089041029902	Logo Label (Guard).....	1
32	089041029702	Gear Box Assembly.....	1	69	089041029001	Guard Pivot Shaft .....	1
33	089041029025	O-Ring .....	1		<b>NOT SHOWN:</b>		
34	089041029701	Gear Shaft Assembly (Inc. Key No. 33) .....	1		991000680	Operator's Manual (089041029906)	
35	089041029019	Bearing Cover.....	1		1-27-16		
36	089041029018	Screw w/Washers (M4 x 16 mm, Pan Hd.).....	2		(Rev:01)		
37	089041029029	Fan Baffle. ....	1				

\*\*\* Standard Hardware Item – May be Purchased Locally At THD

RYOBI TILE SAW – MODEL NUMBER WS731



WIRING DIAGRAM