

PARTS LIST FOR

Magnum[®] 100L

Index of Magnum Guns
Index of Magnum Guns
Index of Magnum Guns
Index of Magnum Guns

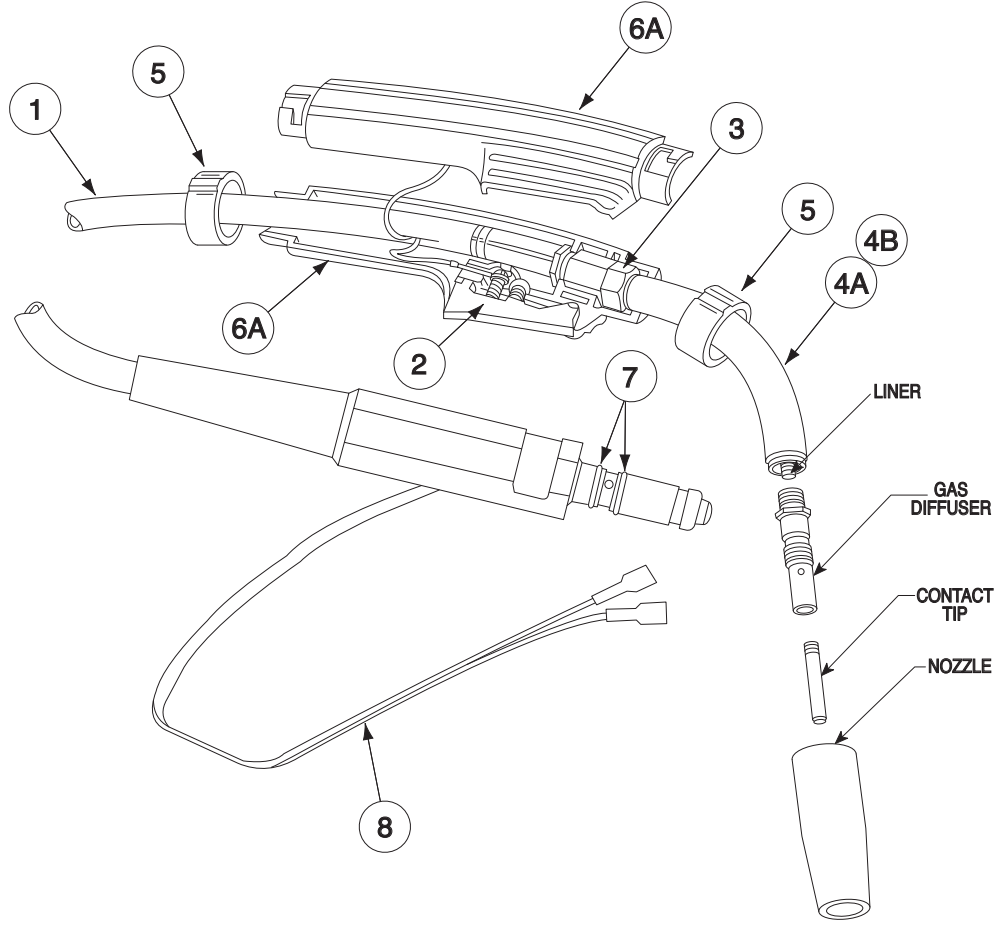
MAGNUM[®] 100L



MAGNUM® 100L

MAGNUM® 100L

MAGNUM® 100L Parts

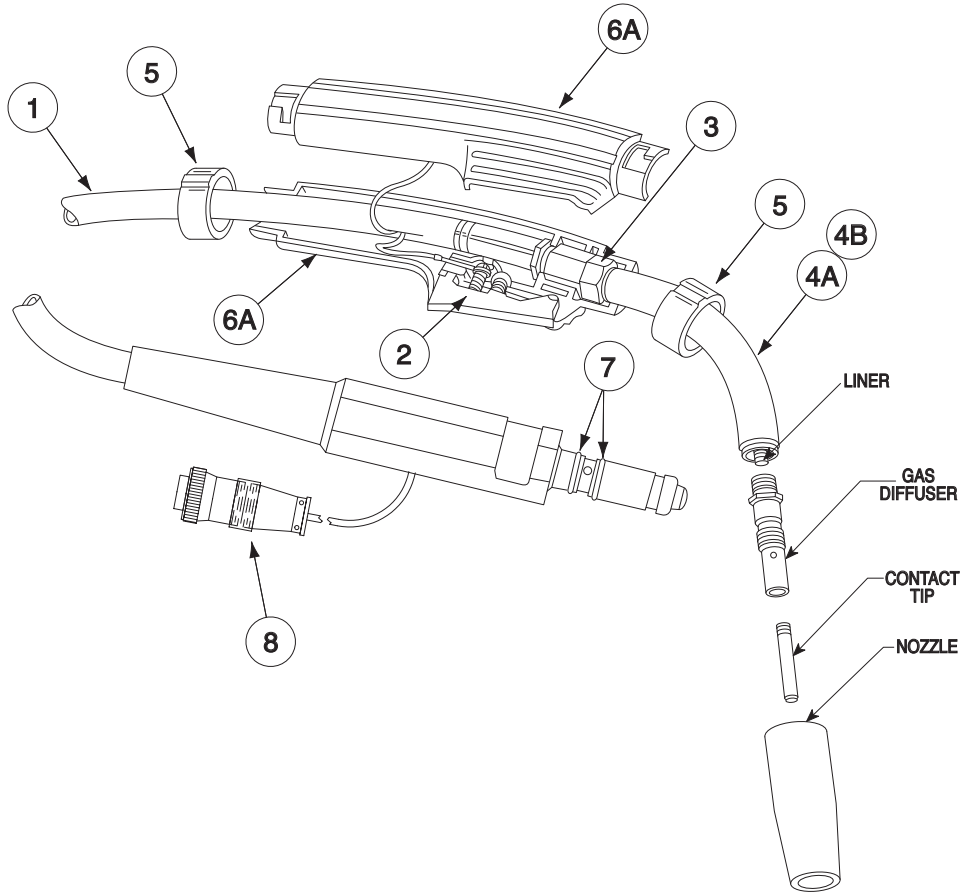


Item	Description	Part Number	Qty.
New Complete Gun & Cable Assemblies:			
	Magnum® 100L FCAW 035-045	K530-3	
	Magnum® 100L GMAW 025-035	K530-5	
Replacement Parts:			
1	Cable Assembly	M16318-1	1
2	Trigger Assembly	S19725	1
3	Locking Nut	S19580	1
4A	Gun Tube Asbly, Includes:	KP2038-1	1
4B	Flex Tube (Gun Tube Cover)	T10642-162	1
5	Collar	S19701	2
6A	Gun Handle (Right & Left)	G2209	1
7	O Ring	T13483-8	2
8	Control Wire Cord	S19729	1
Gun Consumable Parts:			
Liners:			
	.025-.035" Liner	KP1937-3	
	.030-.035" Liner (Aluminum)	KP1959-1	
	.035-.045' Liner	KP45-40-15	
Diffuser:			
	Gas Diffuser	KP35-50	

Item	Description	Part Number	Qty.
Contact Tips:			
	.025" (0.5 mm)	KP11-25	
	.030" (0.8 mm)	KP11-30	
	.035" (0.9 mm)	KP11-35	
	.045" (1.2 mm)	KP11-45	
Tapered Contact Tips:			
	.025" (0.6 mm)	KP11T-25	#
	.030" (0.8 mm)	KP11T-30	
	.035" (0.9 mm)	KP11T-35	
	.045" (1.2 mm)	KP11T-45	
Nozzles:			
	Gas Nozzle 0.5 ID, Tip Flush	KP21-50-F	
	Gas Nozzles, Tip Recessed		
	0.37" I.D.	KP21T-37	
	0.50" I.D.	KP21T-50	
	0.62" I.D.	KP21T-62	
	Gasless FluxCored Nozzle	KP1939-1	
	Spot Welding Nozzle .625 ID	KP21-62-FAS	



MAGNUM® 100L Parts



Item	Description	Part Number	Qty.
New Complete Gun & Cable Assemblies:			
	Magnum® 100L	K530-6	
Replacement Parts:			
1	Cable Assembly	M16318-2	1
2	Trigger Assembly	S19725	1
3	Locking Nut	S19580	1
4A	Gun Tube Assembly	KP2038-1	1
4B	Gun Tube Assembly Cover	T10642-162	1
5	Collar	S19701	2
6A	Gun Handle (Right & Left)	G2209	1
7	O Ring	T13483-8	2
8	Control Wire Cord	S26388	1
Gun Consumable Parts:			
Liners:			
	.025-.035" Liner	KP1937-3	
	.030-.035" Liner (Aluminum)	KP1959-1	
	.035-.045" Liner	KP45-40-15	
Diffuser:			
	Gas Diffuser	KP35-50	

Item	Description	Part Number	Qty.
Contact Tips:			
	.025" (0.5 mm)	KP11-25	#
	.030" (0.8 mm)	KP11-30	
	.035" (0.9 mm)	KP11-35	
	.045" (1.2 mm)	KP11-45	
Tapered Contact Tips:			
	.025" (0.6 mm)	KP11T-25	#
	.030" (0.8 mm)	KP11T-30	
	.035" (0.9 mm)	KP11T-35	
	.045" (1.2 mm)	KP11T-45	
Nozzles:			
	Gas Nozzle 0.5 ID, Tip Flush	KP21-50-F	
	Gas Nozzles, Tip Recessed		
	0.37" I.D.	KP21T-37	
	0.50" I.D.	KP21T-50	
	0.62" I.D.	KP21T-62	
	Gasless Flux Cored Nozzle	KP1939-1	
	Spot Welding Nozzle .625 ID	KP21-62-FAS	

Index of Magnum Guns
Sub Assembly Illustration

MAGNUM® 100L

MAGNUM® 100L

NOTES

Index of Magnum Guns

Index of Magnum Guns

Index of Magnum Guns

Index of Magnum Guns

MAGNUM® 100L

