

CERAMIC

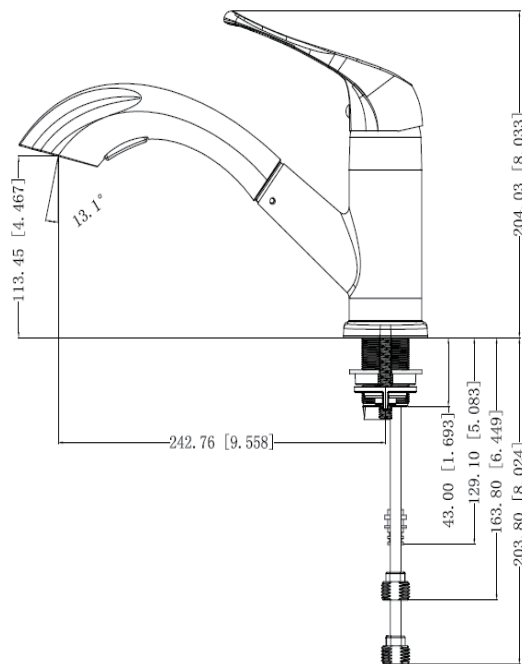
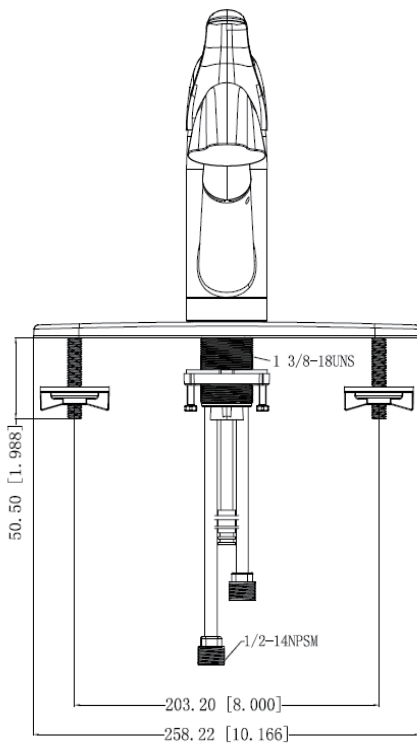
KITCHEN

Features:

- Single Metal Handle
- Ceramic Cartridge
- Max Flow Rate 1.8 GPM(7.6LPM) at 60 PSI (ASME.A112.18.1M)



10203 CHROME FINISH
10204 BRUSH NICKEL



CERAMIC

KITCHEN

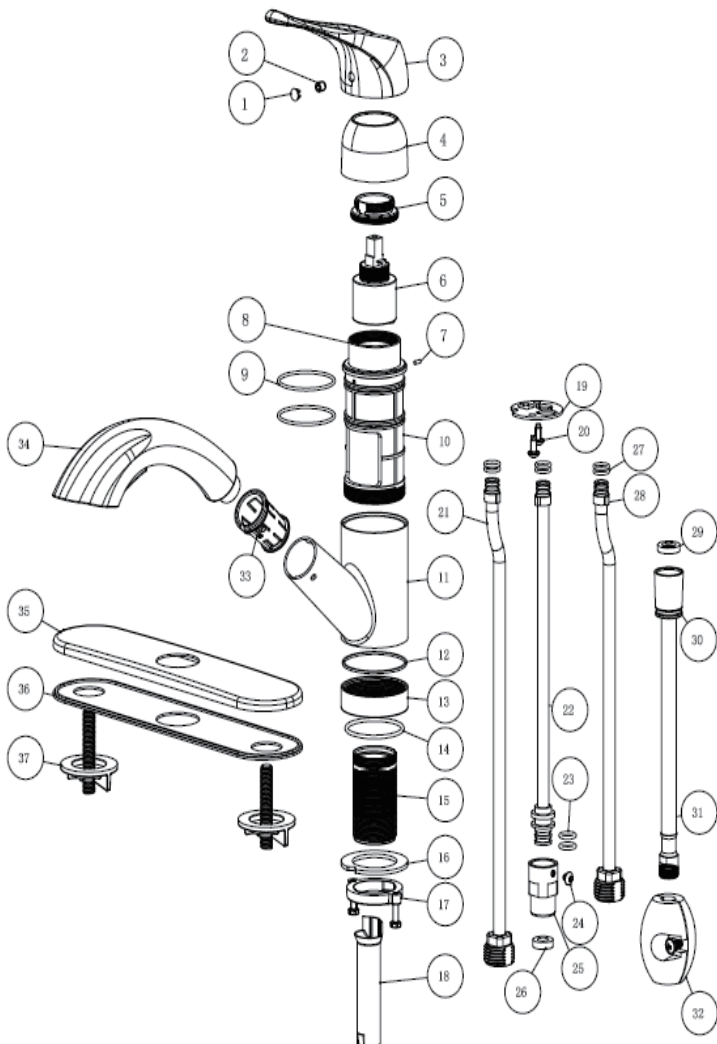
Features:

- Single Metal Handle
- Ceramic Cartridge
- Max Flow Rate 1.8 GPM(7.6LPM) at 60 PSI (ASME.A112.18.1M)



10203 CHROME FINISH

10204 BRUSH NICKEL



No.	Component Description
1	Index Button
2	Screw
3	Handle
4	Dome Nut
5	Fixing Nut
6	Cartridge
7	Screw
8	Cartridge Base
9	O-ring
10	Fixing Seat
11	Water Spout
12	Gasket
13	Collar
14	O-ring
15	Shank
16	Gasket
17	Lock Ring
18	Sleeve
19	Fixing Clip
20	Screw
21	Copper Tube
22	Copper Tube
23	O-ring
24	Screw
25	Connector
26	Gasket
27	O-ring
28	Copper Tube Connector
29	Gasket
30	Shower Hose Connector
31	Shower Hose
32	Counter Weight
33	Spout Sleeve
34	Pull Out Spray
35	Cover Plate
36	Bottom Plate
37	Fixing Nut&Stud

