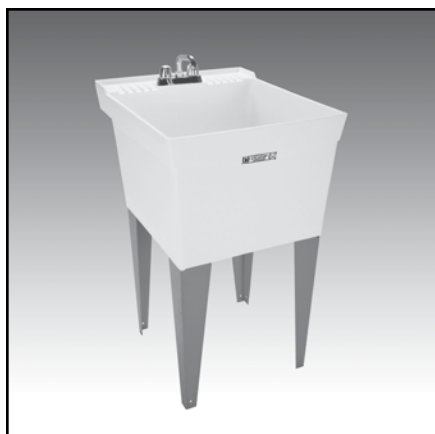




**SEE PAGE 2 FOR A LIST OF ACCESSORIES!**



**Design features:**

- High strength, one piece molded construction
- Produced with Mustee's proprietary structural thermoplastic resins and innovative cellular molding process creating extreme strength & durability
- 18 Gallon capacity, extra deep 13" tub with smooth surface
- Leakproof, integrally molded-in drain with stopper
- Connects to standard 1-1/2" P or S trap
- Accommodates dual-handle faucet with 4" center
- Large, self-draining back shelf with retainer curb that prohibits water run-off except into tub.
- Floor model includes heavy gauge steel legs with adjustable levelers
- Wall model includes wall mounting bracket, side supports and mounting hardware for securing tub to concrete or stud wall
- Mold and mildew-resistant components
- Easy to assemble and install
- Color-fast white finish

**Code Accepted:**

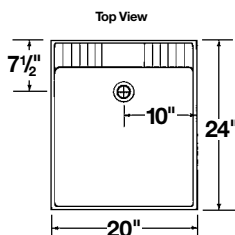
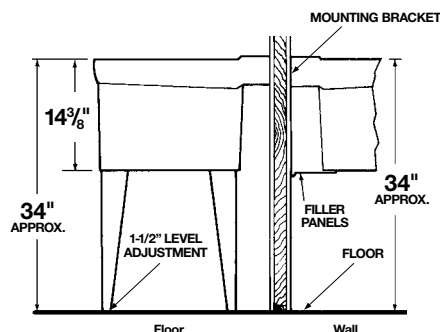
UTILATUB® and UTILATWIN® Laundry/Utility Tubs meet or exceed performance requirements as listed:

- International Association of Plumbing and Mechanical Officials (IAPMO)® Listed
- Warnock Hersey® (Canada) Listed—CSA test standards: Laundry Tray - #B45.0 and #B45.5; Drain - #B125
- American National Standards Institute (ANSI)—Specification Z 124-2011



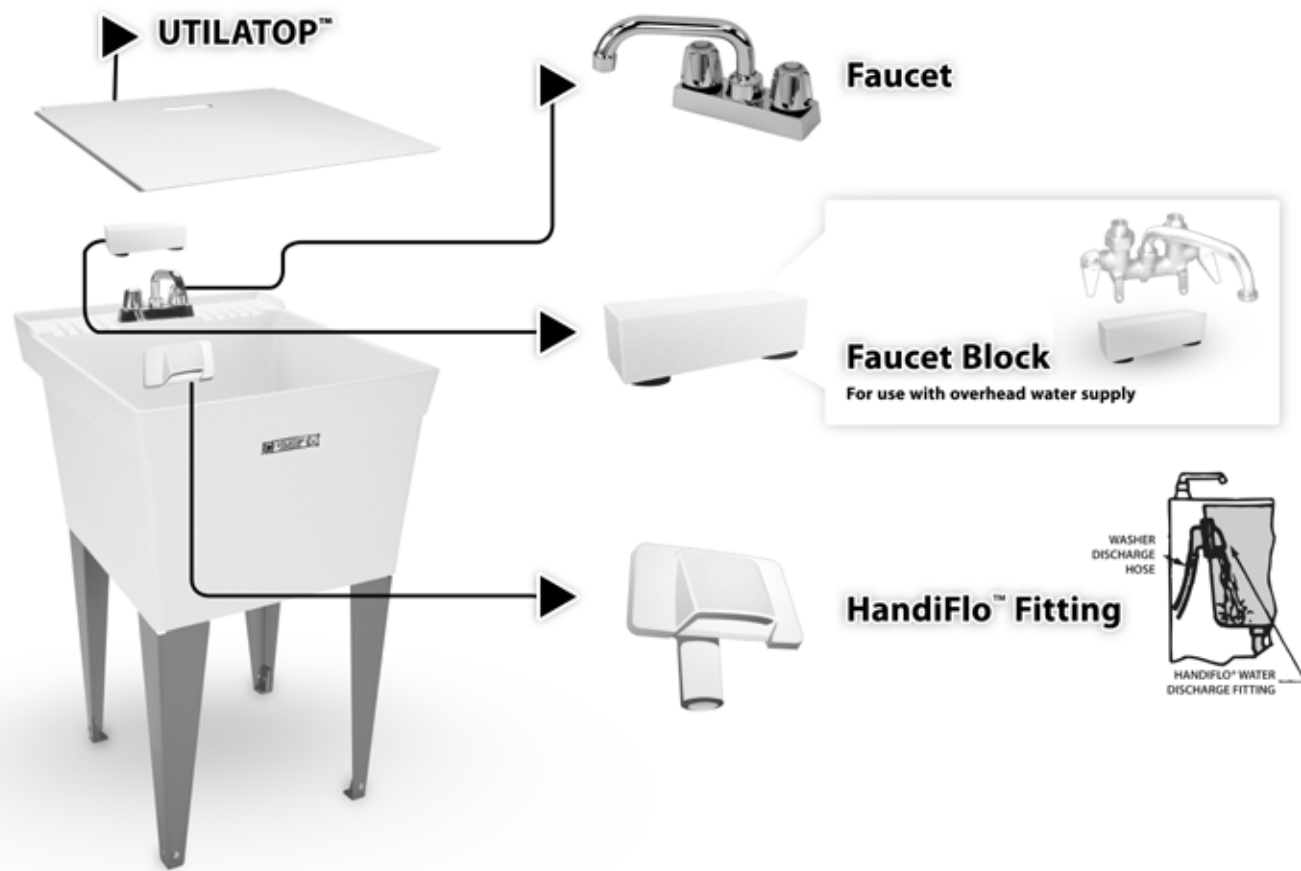
**Specifications**

Colors & Models:	Model	Mounting	H x W x D	UPC
White	19F	Floor	34" x 20" x 24"	6 71031 00029 3
White	19W	Wall	34" x 20" x 24"	6 71031 00030 9



**General:** Furnish and install as shown on plans, UTILATUB® Laundry/Utility Tub model \_\_\_\_ (19F, 19W), as manufactured by E.L. Mustee & Sons, Inc. Tub shall be one-piece molded construction using structural thermoplastics with matched metal molds under extreme heat and pressure. Tub to include integrally molded drain assembly for connection to standard 1-1/2" P or S-trap, stopper and wall mounting hardware or heavy gauge steel legs with built-in levelers. 18 gallon capacity tub, 13" deep. Shall meet ANSI Z 124-2011. Color: White. Weight: 19F 23 lbs.; 19W 20 lbs.





► **Faucet**



**Model No.**

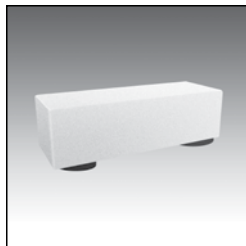
93.600

**UPC**

6 71031 00232 7

Chrome finish, 4" center set brass faucet. 7" swing spout with aerator, level handles, replaceable seats and stems. Aerator or hose end.

► **Faucet Block**



**Model No.**

20.600

**UPC**

6 71031 00031 6

Used when water supply lines are above the tub. Mounts to tub shelf when using a clamp-on faucet.

► **HandiFlo™ Fitting**



**Model No.**

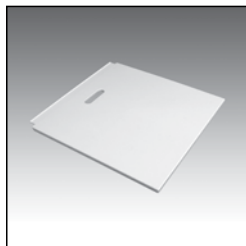
94.700

**UPC**

6 71031 00287 7

Dispenses water from washing machine discharge hose into laundry tub. Eliminates draping washer machine hose over back/side wall of laundry tub and conceals discharge hose. Mounts to back or side wall of laundry tub, includes mounting hardware.

► **UTILATOP®**



**Model No.**

19.204A UTILATOP® (White)

**UPC**

6 71031 00380 5

Completely covers tub to create additional counter space. UTILATOP® supports up to 40 lbs.

