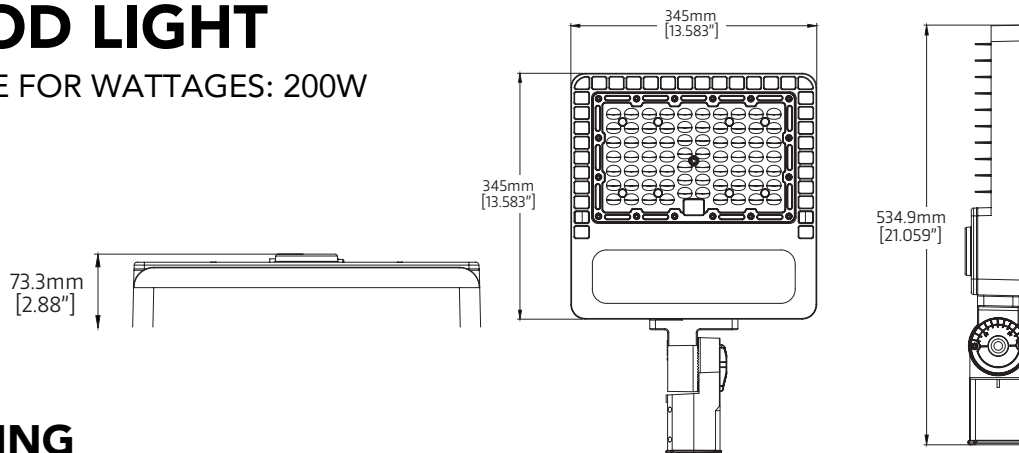


# MOUNTING INSTRUCTIONS

## FLOOD LIGHT

SUITABLE FOR WATTAGES: 200W



### WARNING

Disconnect the Electrical supply power at the service panel (fuse or circuit breaker box). Failure to do so could result in serious injury or death. Only qualified electricians should install this fixture and the installation MUST conform to the National Electrical Code Part I and all local codes and ordinances. Ensure that only proper tools, materials, and equipment are used to complete the installation.

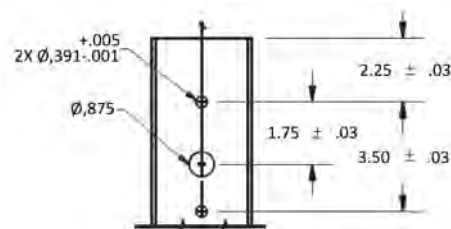
### SAFETY

- Proper grounding is required to ensure personal safety.
- Servicing this equipment should be performed by qualified service personnel.
- Save these instructions.

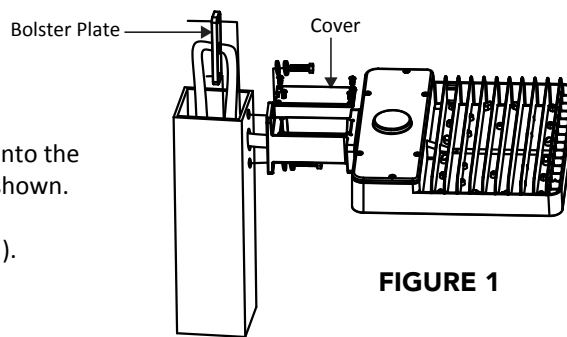
### INSTALLATION

#### SQUARE POLE MOUNTING: FIG. 1

- Remove the pole's top cover.
- Drill mounting holes into pole, see drilling details.
- Align the two extension arm holes with the holes in the square pole.
- Insert the two 5/16-18x1-1/2" hex head bolts through the arm, pole and into the bolster plate. Each bolt must have flat washer and lock washer added as shown.
- Tighten the two bolts to **140 in-lbs (16 N m)**
- Remove the extension arm's cover and connect leads (see wiring diagram).
- Re-attach extension arm cover and pole cover.



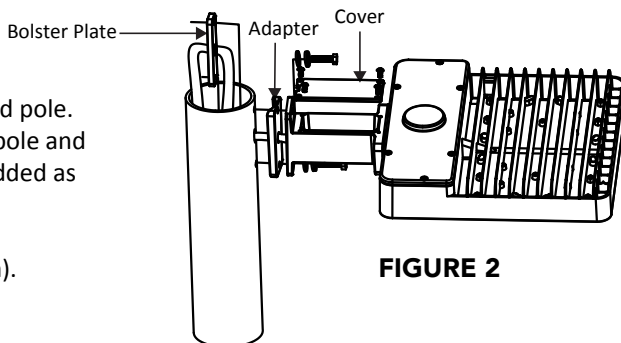
**DRILLING DETAILS**



**FIGURE 1**

#### ROUND POLE MOUNTING: FIG. 2

- Remove the pole's top cover.
- Drill mounting holes into pole, see drilling details.
- Align the two extension arm holes with the holes in the adapter and round pole.
- Insert the two 5/16-18x1-1/2" hex head bolts through the arm, adapter, pole and into the bolster plate. Each bolt must have flat washer and lock washer added as shown.
- Tighten the two bolts to **140 in-lbs (16 N m)**
- Remove the extension arm's cover and connect leads (see wiring diagram).
- Re-attach extension arm cover and pole cover.



**FIGURE 2**

### WIRING

- Make sure that the mains voltage is appropriate and conforms with the luminaire driver.
- Connect fixture **GROUND** (green) wire to power supply **GROUND** (green) wire.
- Connect fixture **WHITE** wire to power supply **(-) COMMON** wire.
- Connect fixture **BLACK** wire to power supply **(+)LINE** wire.

