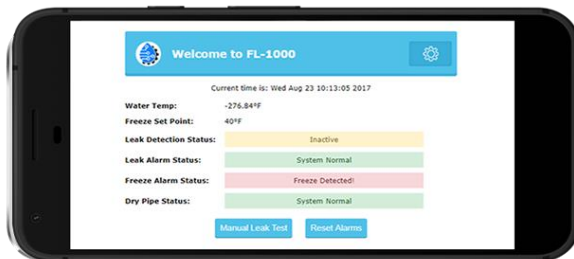




MC Smart Controls

FL-1000 Assembly Guide



Installation

Location

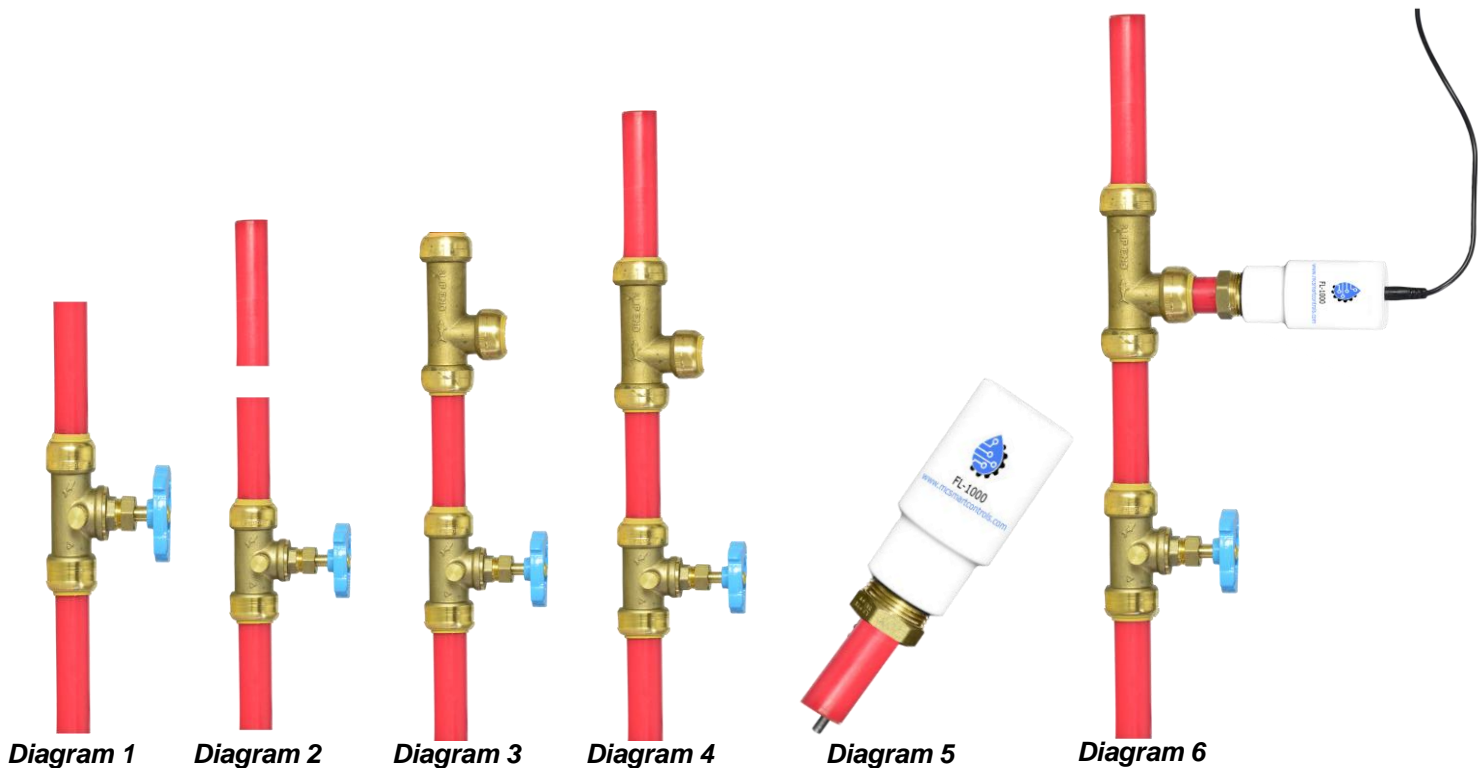
- Select a location at least 6 inches or more after the main shutoff for the installation of the FL-1000 sensor. Make sure that the location you select in the main line after the shutoff valve is before the pipe branches off.

Mounting and Installation *(It is Strongly advised to contract a certified plumber)*

1. Shut off the main valve that feeds the water to the house. *See diagram 1*
2. Cut a one inch piece out of the PEX water pipe. *See diagram 2*
3. Slip the Shark Bite Model# U3370LFA push tee fitting on to one end of the cut water pipe(PEX, Copper, PVC) . *See diagram 3*
4. Slip the other end of the water pipe on to the tee. *See diagram 4*
5. Take out the FL-1000 leak detector for its package. *See diagram 5*
6. Install the FL-1000 leak detector into the top of the tee.. *See diagram 6*
7. Turn the main water valve back on and check for leaks.

Connect Line Power

- Let the water run for a few minutes. If there are no leaks plug the AC power supply into the wall outlet.



Pre-Delivery/Install Checklist

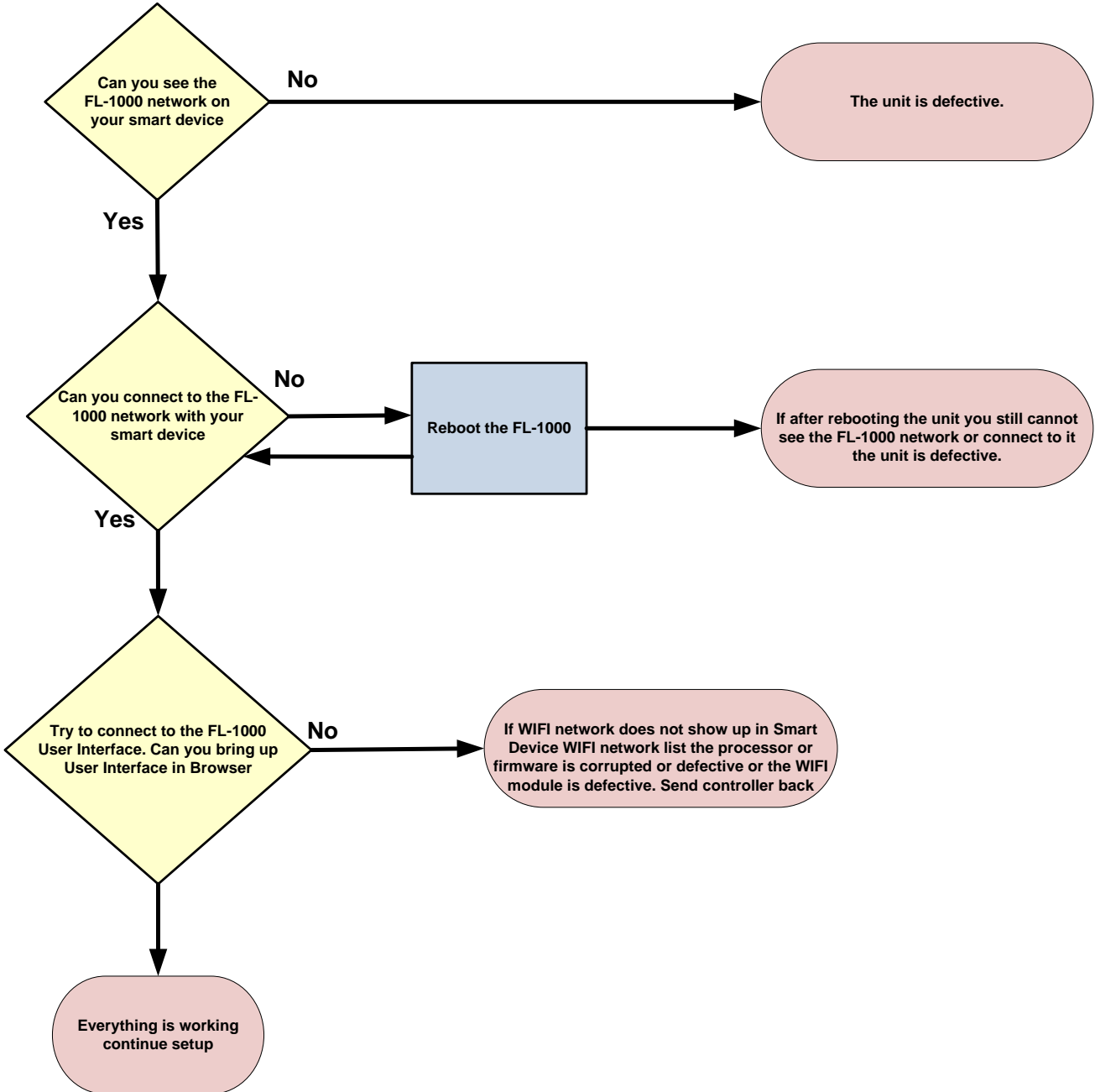


1) FL-1000 Leak/Freeze Sensor



2) 24 VDC power Adapter

Troubleshooting



Warranty and Disclaimers

WARRANTY

Mani Group warrants that each product will be free of defects in material and workmanship for a period of one (1) year for its products. The warranty commences on the date the product is shipped by Mani Group. Mani Group's sole liability and responsibility under this warranty is to repair or replace any product which is returned to it by the Buyer and which Mani Group determines does not conform to the warranty. Product returned to Mani Group for warranty service will be shipped to Mani Group at Buyer's expense and will be reshipped to Buyer at Mani Groups expense. In no event, shall Mani Group be responsible under this warranty for any defect which is caused by negligence, misuse or mistreatment of a product or for any unit which has been altered or modified in any way. The warranty of replacement shall terminate with the one (1) year warranty of the product.

Mani Group makes no warranties of any nature of kind, expressed or implied, with respect to the hardware, software, and/or products and hereby disclaims any and all such warranties, including but not limited to warranty of non-infringement, implied warranties of merchantability for a particular purpose, any interruption or loss of the hardware, software, and/or product, any delay in providing the hardware, software, and/or product or correcting any defect in the hardware, software, and/or product, or any other warranty. The Purchaser represents and warrants that Mani Group has not made any such warranties to the Purchaser or its agents MANI GROUP EXPRESS WARRANTY TO BUYER CONSTITUTES MANI GROUP SOLE LIABILITY AND THE BUYER'S SOLE REMEDIES. EXCEPT AS THUS PROVIDED, MANI GROUP DISCLAIMS ALL WARRANTIES, EXPRESS OR IMPLIED, INCLUDING ANY WARRANTY OF MERCHANTABILITY OR FITNESS FOR A PARTICULAR PROMISE.