

## **OPERATOR'S MANUAL & PARTS LIST**

### **Comfort Pro Backpack Vacuum BP6 - BP10 Series**



6 quart model



10 quart model



Hands free  
tool kit

**WARNING: OPERATOR MUST READ AND UNDERSTAND THIS MANUAL COMPLETELY BEFORE OPERATING THIS EQUIPMENT.**

## NOTES

Model Number: \_\_\_\_\_

Serial Number: \_\_\_\_\_

Date of Purchase: \_\_\_\_\_

**Retain this manual as a permanent record of your purchase.**

# INTRODUCTION

Check the carton for shipping damage. Carefully unpack and inspect your new Powr-Flite vacuum for shipping damage. Each unit is tested and thoroughly inspected prior to shipping. If damage is discovered, immediately notify the transportation company that delivered your machine and request an inspection. As a manufacturer, we are unable to act upon any claim for concealed damage; you must originate the claim. Be sure to keep the carton, packing inserts, packing lists, and carrier's receipt until the inspector has verified your claim.

**Introduction .....3**

**Safety Instructions .....4**

**Storage .....4**

**Grounding Instructions.....5**


**Operating Instructions .....6**

**Maintenance..... 10**

**Troubleshooting ..... 10**


**Machine Specifications..... 11**

**Schematic and Parts List..... 12**



**PROTECT THE ENVIRONMENT**

Please dispose of packaging materials in an environmentally safe way according to local waste disposal regulations.



Always remember to recycle

## MANUAL

This manual has important information for the use and safe operation of the Comfort Pro. Read this manual carefully before starting the machine. Keep the manual available at all times and instruct all operators to read this manual.

REPLACEMENT / ACCESORIES		
MODEL	COMFORT PRO 6 - BP6S & BP6P	COMFORT PRO 10 - BP10S & BP10P
MICRO HEPA FILTER BAG (10 PK)	X9678	X9732
CLOSED MOUTH PAPER BAG (10 PK)	X9735	X9736
OPEN MOUTH PAPER BAG (10 PK)	X9737	X9738
MICRO CLOTH BAG	X9679	X9692
INLET FILTER	X9683	X9683
EXHAUST FILTER	X9682	X9682
50' POWER CORD	X9714	X9714
REPLACEMENT BRUSH STRIP FOR POWR-GLIDE	CT192	CT192

## SAFETY WARNINGS AND PRECAUTIONS

**⚠ WARNING!** Read all instructions before using. Save These Instructions. Following the cleaning instructions will prolong the life of your Powr-Flite vacuum.

When using an electrical appliance, basic precautions should always be followed.

1. Use only as instructed in this manual. Use only the recommended attachments and replacement parts.
2. Do not leave vacuum cleaner plugged in when not in use. Unplug vacuum before servicing.
3. Do not use outdoors or on wet surfaces.
4. Do not use to pick up liquids. This vacuum is for Dry Pickup only.
5. If the unit is not working as it should, has been dropped, damaged, left outdoors, or exposed to water, return it to a service center before using.
6. Do not vacuum up hard or sharp objects, as they may damage the hose, vacuum bag or the vacuum motor.
7. Do not use without paper vacuum bag, cloth bag and filters in place.
8. Do not operate the vacuum while it is standing on high-pile carpet. The exhaust airflow is restricted and will cause the unit to overheat.
9. Do not use with damaged cord or plug.
10. Do not kink or twist the power cord.
11. Do not pull or carry by the cord, use the cord as a handle, close a door on cord, or pull cord around sharp edges or corner. Do not run vacuum cleaning over cord. Keep cord away from heated surfaces.
12. Do not pull on the cord to unplug. Grasp and pull the plug, not the cord. Turn off the vacuum before unplugging.
13. Do not handle the cord, plug, switch or vacuum with wet hands.
14. Do not use outlets with inadequate current capacity.
15. Do not use an extension cord with this vacuum.
16. Do not put any objects into openings. Do not use with any opening blocked. Keep free of dust, lint, hair and anything that might reduce airflow.
17. Keep hair, loose clothing, fingers, and all parts of body away from openings and moving parts.
18. Use with extra care when cleaning stairs.
19. Do not vacuum flammable or combustible materials or anything that is burning or smoking, such as cigarettes, matches, or hot ashes.
20. Do not use with dust bag not in place.
21. Sparks inside the motor can ignite flammable vapors or dust. To reduce the risk of fire or explosion, do not use near combustible liquids, gases, or dusts, such as gasoline or other fuels, lighter fluid, cleaners, oil-based paints, or natural gas.
22. To reduce the risk of inhaling toxic vapors do not vacuum or use near toxic or hazardous materials.
23. Keep children and unauthorized persons away from the vacuum when in use.
24. This machine is not intended for use by persons with reduced physical, sensory or mental capabilities, or lack of experience and knowledge.
25. Do not attempt to service the vacuum yourself. Repair by anyone other than an authorized repair service center may void the warranty.
26. Store the vacuum indoors in a cool, dry area

## STORAGE

Always store the vacuum in cool, dry place.

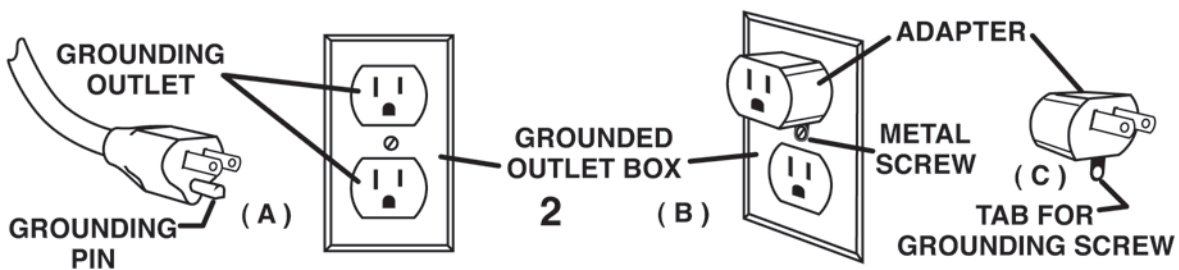
## GROUNDING INSTRUCTIONS

This vacuum must be grounded! Grounding is a safety measure to reduce the risk of electrical shock to the operator should the machine malfunction or stop working. Grounding provides the path of least resistance for electric current and will trip the circuit breaker, stopping the flow of electricity.

This unit is equipped with a cord that has an equipment-grounding conductor and grounding plug. The plug must be inserted in an appropriate outlet that is properly installed and grounded in accordance with all local codes and ordinances. Cutting off the ground wire or using a cord that is not equipped with a ground plug will void the warranty on the unit. Powr-Flite will accept NO liability associated with the unit.

**! WARNING!** Improper connection of the equipment-grounding conductor can result in a risk of electric shock. Check with a qualified electrician or service person if you are in doubt as to whether the outlet is properly grounded. Do not modify the plug provided with the appliance. If it will not fit the outlet, have a proper outlet installed by a qualified electrician.

The vacuums are for use on a nominal 120-volt circuit, and have a grounded plug that looks like the plug illustrated in Figure A. A temporary adapter that looks like the adapter illustrated in Figure B and C may be used to connect this plug to a 2-pole receptacle as show in Figure B if a properly grounded outlet is not available. The temporary adapter should be used only until a properly grounded outlet (Figure A) can be installed by a qualified electrician. The green colored rigid ear, lug, or the like, extending for the adapter must be connected to a permanent ground such as a properly grounded outlet box cover. Whenever the adapter is used, it must be held in place by a metal screw.



Note: In Canada, the use of a temporary adapter is not permitted by the Canadian Electrical Code.

**! WARNING!** The replacement or repair of damaged wiring should only be performed by a qualified electrician or service engineer from the manufacturer or authorized service center.

# OPERATING INSTRUCTIONS

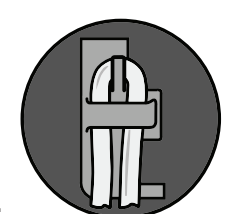
## IMPORTANT!

### **PERFORM PROPER INSTALLATION OF HEPA BAGS AND CORD IN COMFORT PRO BACKPACK VACUUMS.**

Please read the following instructions carefully. They will help to get the best performance from this professional commercial vacuum cleaner and to maintain it in optimum condition. Always make sure the main power of the vacuum is off and the unit is not plugged in when doing any maintenance on the vacuum.

#### Preparing To Vacuum

1. Remove vacuum hose from top of unit. (Fig. 1)
  2. Release the two latches and lift off lid. (Fig. 2)
  3. Ensure Micro Cloth bag is fully seated on Comfort Pro tank housing. (Fig. 3)
  4. Fold the bottom 2" of the HEPA bag up and hold into place. (Fig. 4)
  5. Insert HEPA bag inside of micro cloth bag. (Fig.5)
  6. Squeeze bag just below the cardboard collar and drop onto rubber gasket. (Fig. 6)
  7. Ensure that white bag is not protruding under cardboard collar. (Fig. 7)
  8. NOTE: Cardboard must be properly seated inside gasket groove. Cardboard will be flush with gasket. (Fig. 8)
  9. Replace lid, lock down the two latches and install hose. (Fig. 9).
  10. Ensure the extension cord is wrapped around the cord retainer on the harness with 6 inches of cord from the retainer to the end of the plug. (Fig. 10)
- ! WARNING!** Always use the cord retainer. There is a risk of electrical shock/damage to the backpack vacuum if cord retainer is not used. (Fig. 10)
11. Then plug the extension cord to the plug receptacle.
  12. Store the power cord on the cord hook located on the harness after each use. (Fig. 11)



**! WARNING!** Always unplug machine before cleaning, or making any adjustments or repairs.

The backpack vacuum has four levels of filtration: the paper vacuum bag, a micro cloth filter, a pre-motor filter and an exhaust filter. These bags and filters capture fine dust particles and protect the motor from dirt. It is important to replace the paper bag when it is no more than 1/2 full and to clean the filters on a regular schedule and replace as necessary.

### Paper Vacuum Bag

1. Remove paper bag. Insert a new paper bag into the cloth bag, making sure the cardboard disk is centered on the flexible sealing ring. When you replace the lid, the short nozzle in the center of the lid will be closed over the central hole of the cardboard disk of the paper vacuum bag providing a seal. (Fig. A)

2. Replace the lid. Fasten latches and replace hose. (Figs. C-D)

### Micro Cloth Filter

After each use, the cloth filter bag should be inspected. Wash the cloth filter bag every 6 months using cold water and no detergent. Line dry.

3. Remove the micro cloth bag, clean and replace. (Fig. B)

4. Replace paper vacuum bag and lid. Fasten latches and insert hose. (Figs. C-D)

### Pre-Motor Filter

The pre-motor filter is located under the micro cloth filter. Inspect after each use. The filter can be washed using cold water and no detergent. Lay flat to dry. Replace every 6 months.

5. Remove the lid, the paper vacuum bag, and the cloth bag to expose the pre-motor filter.

6. Remove the foam pre-motor filter from the dust compartment, clean and replace. If filter is extremely dirty, rinse out and air dry before replacing back into vacuum. (Fig. E)

7. Reinstall the cloth bag, the paper vacuum bag and replace the lid, fasten latches and insert the hose. (Figs. C-D)

### Exhaust Filter

The exhaust filter is an easy-access washable, reusable post-motor filter located on the bottom of the vacuum. For average use of the vacuum, remove and clean the exhaust motor filter every 3 months. The filter can be washed using cold water and no detergent. Lay flat to dry. Replace once a year.

8. Remove the foam post motor filter, clean and replace.

9. Reinstall the filter at the bottom of the vacuum. (Fig. F)



## Wearing the Backpack Vacuum

The backpack is designed to balance the weight of the vacuum on the hips, not the shoulders.

1. Adjust the Vari-Quick height adjuster to your back length.
2. Loosen all of the straps and place the vacuum on your back.

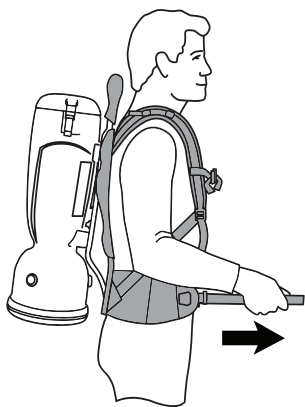


FIG. 1

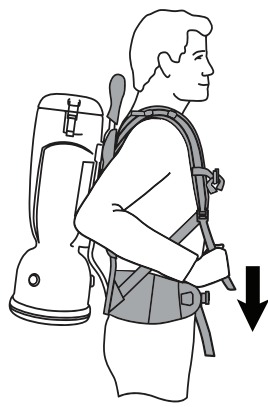


FIG. 2



FIG. 3

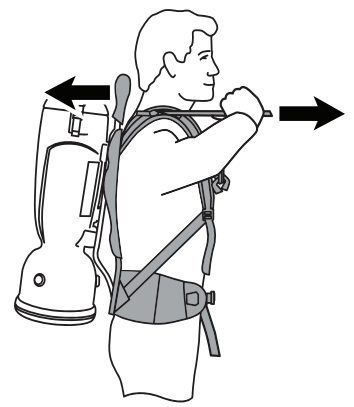


FIG. 4

3. Place the hip belt over your hip and connect the buckle. Your hip bones should be centered between the top and bottom of the belt. Pull the straps forward to tighten the hip belt. (Fig. 1)

4. Pull down the shoulder straps to tighten the backpack on your shoulders. (Fig. 2) Do not tighten too tight. The main weight of the vacuum should be on the hip belt. The anchor points of the shoulder straps should ideally be between the shoulder blades. Adjust the Vari-Quick height adjuster if necessary to properly place the vacuum to your back length.

5. Adjust the sternum strap on a comfortable part of your chest and close the strap. (Fig. 3)

6. Loosen or tighten the stabilizer straps as needed, to fit your back. (Fig. 4)

7. Do final adjustments on the shoulder and stabilizer straps as needed to balance the weight of the vacuum on the hips.



## Active Cooling (Premium Model)

To turn Active Cooling on, raise silver metal bar. (Fig. 5)

Warm air will be pulled into machine and circulate cooler air through mesh on Deuter harness.

Active Cooling can be turned off by lowering silver metal bar. (Fig. 6)

Active Cooling can stay open all the time.

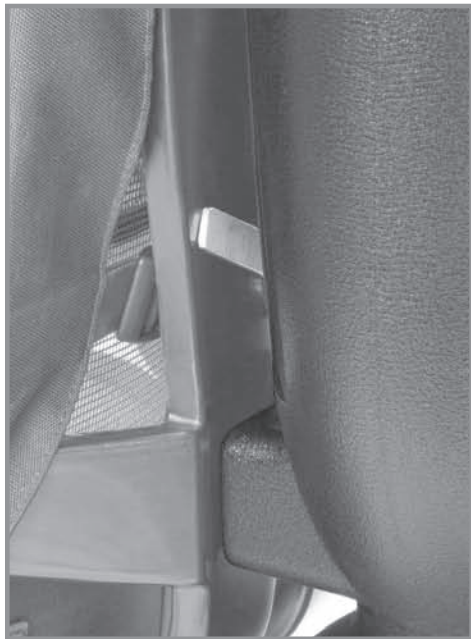


FIG. 5

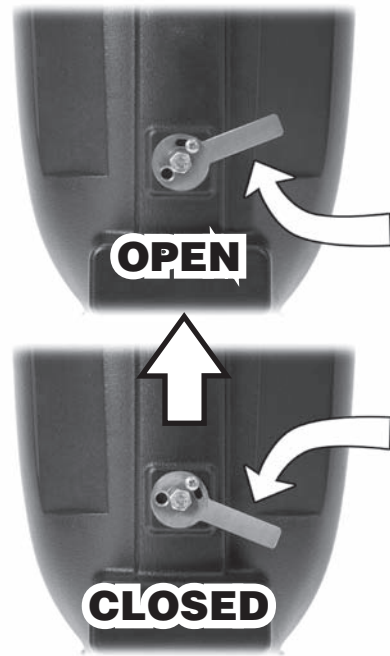


FIG. 6

## MAINTENANCE

Routine maintenance can significantly increase the life of your backpack vacuum. The applications and amount of use varies, so the recommendations listed below are for average-to-high volume use. Constant operation may require additional maintenance.

### Before Each Use

1. Inspect power cord for fraying, cuts or damage; do not use if damaged.
2. Verify that paper vacuum bag is installed.
3. Place the hip belt over your hip and connect the buckle. Your hip bones should be centered between the top and bottom of the belt. Pull the straps forward to tighten the hip belt.
4. Pull down the shoulder straps to tighten the backpack on your shoulders. Do not tighten too tight. The main weight of the vacuum should be on the hip belt. The anchor points of the shoulder straps should ideally be between the shoulder blades. Adjust the Vari-Quick height adjuster if necessary to properly place the vacuum to your back length.
5. Adjust the sternum strap on a comfortable part of your chest and close the strap.
6. Loosen or tighten the stabilizer straps as needed, to fit your back.
7. Do final adjustments on the shoulder and stabilizer straps as needed to balance the weight of the vacuum on the hips.

### After Each Use

1. Unplug cord from wall outlet by pulling on the plug - not the cord.
2. Lay plug on ground.
3. Start at machine and loosely wrap (loop) power cord.
4. Secure the end of the power cord to itself using latch on the plug of the power cord.
5. Hang cord of cord hook.



### Periodic Maintenance

1. Inspect all electrical connections.
2. Check the power cord for any breaks, fraying, separations, or cuts.
3. Make sure the ground pin or grounding prong is intact.

## TROUBLE SHOOTING

If the vacuum will not turn on:

1. Make sure the power cord is firmly connected to the unit and is in good condition.
2. Check sure the power cord is firmly seated in the wall outlet.
3. Check to see if the building circuit breaker is tripped. If circuit is overloaded, move the unit to another circuit.

The backpack vacuum has been fitted with a thermal overload switch to protect the motor against damage should the airflow be blocked for extended periods. This may occur if the vacuum bag is overfull, the micro cloth bag is clogged, or if the vacuum hose or exhaust is blocked. The vacuum motor will stop before it can get too hot. If this happens, empty and thoroughly clean the vacuum bag and filters, or free any blockage and ensure that adequate airflow is restored. After the motor has cooled to a safe operating temperature, locate the thermal reset switch on the bottom of the unit, under the post motor filter and push it back in. There will be a slight audible click. Now the motor will restart.



# SPECIFICATIONS



**6 quart model**



**10 quart model**

**Specifications and parts are subject to change without notice.  
Please refer to [www.Powr-Flite.com](http://www.Powr-Flite.com) for the latest schematic drawing and parts list.**

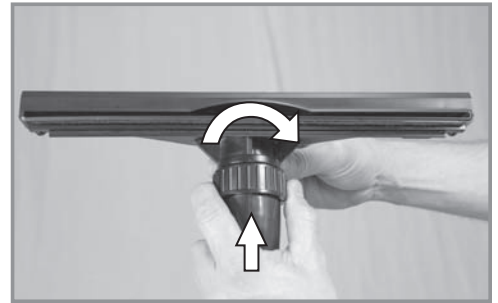
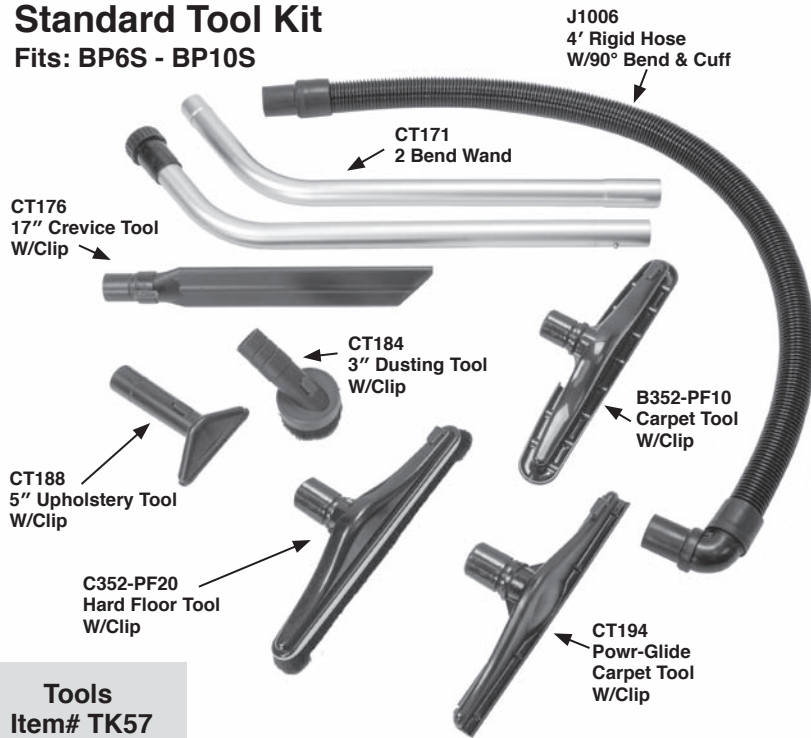
## PRODUCT SPECIFICATIONS

MODEL	COMFORT PRO 6	COMFORT PRO 10	COMFORT PRO 6 PREMIUM	COMFORT PRO 10 PREMIUM
ITEM#	BP6S	BP10S	BP6P	BP10P
TOOL KIT*	Standard	Standard	Hands-Free	Hands-Free
BODY	High Density Polyethylene	High Density Polyethylene	High Density Polyethylene	High Density Polyethylene
DIMENSIONS (L X W X H)	10 in x 12.5 in x 26.5 in 25.4 cm x 31.8 cm x 67.3 cm	13" x 11.5" x 26.5" 33 cm x 29.2 cm x 67.3 cm	10 in x 12.5 in x 26.5 in 25.4 cm x 31.8 cm x 67.3 cm	13" x 11.5" x 26.5" 33 cm x 29.2 cm x 67.3 cm
MACHINE WEIGHT (LBS. / KG)	8.62 lbs. / 3.22 kg	9.62 lbs. / 4.3636 kg	8.75 lbs. / 3.9689kg	9.75 lbs. / 4.4225 kg
HARNESS WEIGHT (LBS. / KG)	3.2 lbs. / 1.45 kg	3.2 lbs. / 1.45 kg	3.2 lbs. / 1.45 kg	3.2 lbs. / 1.45 kg
CORD LENGTH / TYPE	50 ft. / 15 m, direct plug	50 ft. / 15 m, direct plug	50 ft. / 15 m, direct plug	50 ft. / 15 m, direct plug
CAPACITY (QUARTS / LITERS)	6 qt. / 5.69 l	10 qt. / 9.46 l	6 qt. / 5.69 l	10 qt. / 9.46 l
FILTRATION	4 stage HEPA	4 stage HEPA	4 stage HEPA	4 stage HEPA
WATERLIFT	110 in. / 279 cm	110 in. / 279 cm	110 in. / 279 cm	110 in. / 279 cm
CFM /CMM	130 cfm / 3.68 cmm	130 cfm / 3.68 cmm	130 cfm / 3.68 cmm	130 cfm / 3.68 cmm
CLEANING PRODUCTIVITY	7,407 sq. feet per hour 688 sq. meters per hour	7,407 sq. feet per hour 688 sq. meters per hour	7,407 sq. feet per hour 688 sq. meters per hour	7,407 sq. feet per hour 688 sq. meters per hour
SOUND LEVEL	68 dBa	68 dBa	62 dBa	62 dBa
VACUUM MOTOR	1100 W / 10 Amp	1100 W / 10 Amp	1100 W / 10 Amp	1100 W / 10 Amp
POWER	120V / 60Hz	120V / 60Hz	120V / 60Hz	120V / 60Hz
APPROVALS	CRI Gold Level Approved	CRI Gold Level Approved	CRI Gold Level Approved	CRI Gold Level Approved
230V AVAILABLE	Yes**	Yes**	Yes**	Yes**

# TOOL KITS

## Standard Tool Kit

Fits: BP6S - BP10S



Install the floor tool to the end of the wand. Align the brass ring with the groove on the floor tool to ensure a secure fit.

## Premium Tool Kit

Fits: BP6P - BP10P

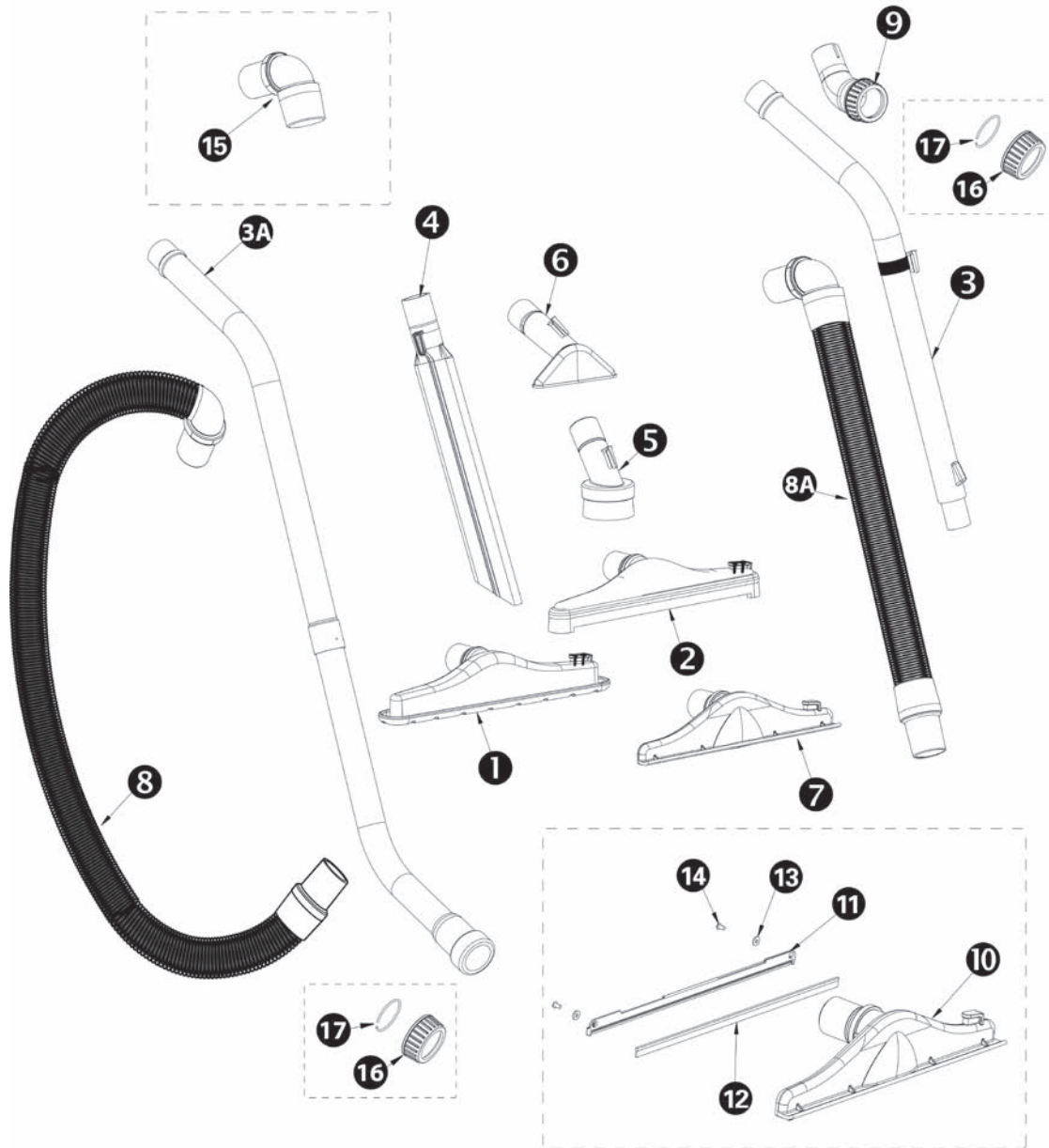


**To properly attach one-bend adapter (#J1007) to the one-bend telescopic wand (#CT170):**

Install the adapter on the wand with the line pointing to the center of the notches on the wand.

Install floor tool onto adapter and tighten plastic nut to secure.

# TOOLS SCHEMATICS AND PARTS LIST



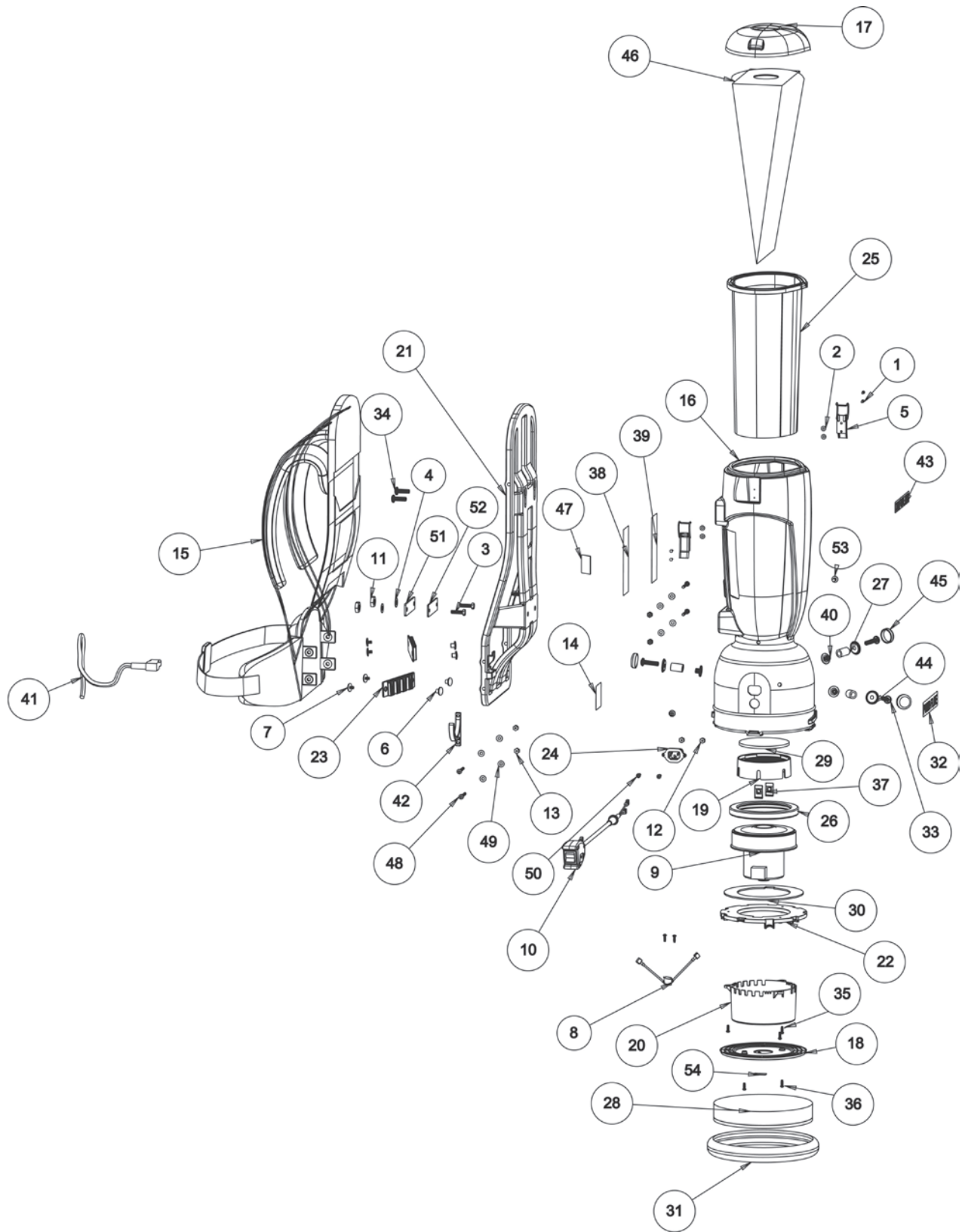
## STANDARD TOOL KIT - FITS BP6S - BP10S

ITEM	DESCRIPTION	PART NO.	QTY
1	CARPET TOOL W/CLIP	B352-PF10	1
2	HARD FLOOR TOOL W/CLIP	C352-PF20	1
3A	DOUBLE BEND WAND	CT171	1
4	17" CREVICE TOOL W/CLIP	CT176	1
5	3" DUSTING TOOL W/CLIP	CT184	1
6	5" UPHOLSTERY TOOL W/CLIP	CT188	1
7	POWR-GLIDE CARPET TOOL W/CLIP	CT194	1
8	4' CRUSH PROOF HOSE W/90° CUFF	J1006	1
10	POWR-GLIDE CARPET TOOL BODY W/CLIP	CT190	1
11	BRUSH HOLDER	CT191	1
12	BRUSH STRIP	CT192	1
13	#6 WASHER	X8817	2
14	#6 SCREW	X9903	2
15	90 DEGREE SWIVEL CUFF	J1004	1
16	NUT	J1009	1
17	RING	J1010	1

## PREMIUM TOOL KIT - FITS BP6P - BP10P

ITEM	DESCRIPTION	PART NO.	QTY
1	CARPET TOOL W/CLIP	B352-PF10	1
2	HARD FLOOR TOOL W/CLIP	C352-PF20	1
3	SINGLE BEND TELESCOPING WAND W/CLIP	CT170	1
4	17" CREVICE TOOL W/CLIP	CT176	1
5	3" DUSTING TOOL W/CLIP	CT184	1
6	5" UPHOLSTERY TOOL W/CLIP	CT188	1
7	POWR-GLIDE CARPET TOOL W/CLIP	CT194	1
8A	2' - 6' STRETCH HOSE W/90° CUFF	J1005	1
9	ONE BEND WAND ADAPTOR	J1007	1
10	POWR-GLIDE CARPET TOOL BODY W/CLIP	CT190	1
11	BRUSH HOLDER	CT191	1
12	BRUSH STRIP	CT192	1
13	#6 WASHER	X8817	2
14	#6 SCREW	X9903	2
15	90 DEGREE SWIVEL CUFF	J1004	1
16	NUT	J1009	1
17	RING	J1010	1

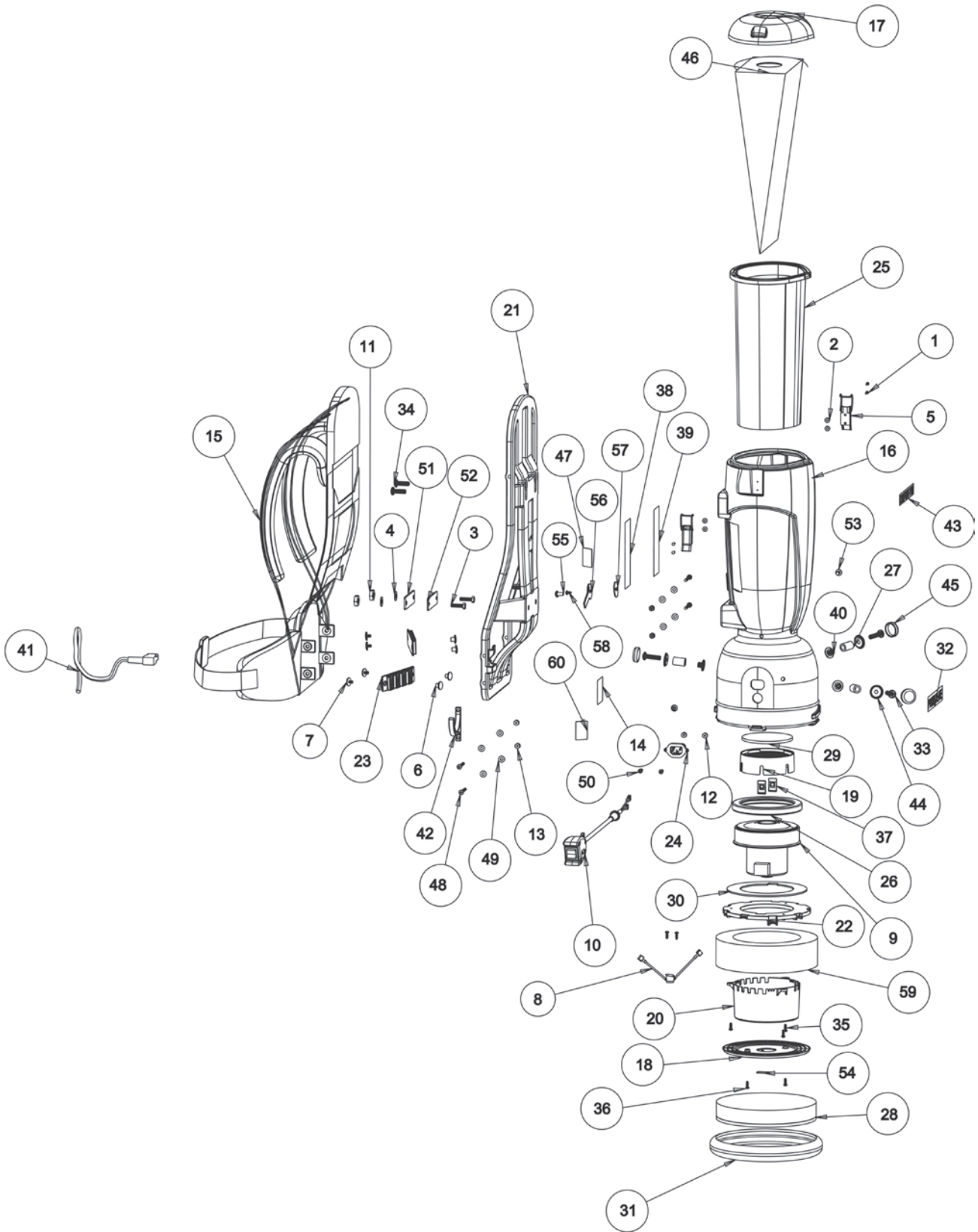
# SCHEMATIC AND PARTS LIST - BP6S



# PARTS LIST - BP6S

ITEM	DESCRIPTION	PART #	QTY
1	3.2 ALUMINUM DOMED RIVET	X9758	4
2	#6 FLAT WASHER ZP	1575	4
3	BOTTOM HARNESS BOLT	3361	2
4	HARNESS MOUNTING WASHER	7CR004	2
5	LID LATCH	A352-3300	2
6	FEMALE RIVET FOR BELT PANEL	A352-9401	4
7	BELT PANEL MOUNTING SCREW	A352-9402	4
8	THERMAL RESET SWITCH	B333-0400B	1
9	5.1" VACUUM MOTOR	B395-2000	1
10	BACKPACK SWITCH HARNESS	C352-2800	1
11	NUT 5/16 LOCK W/ NYLON INSERT	X8248	2
12	6-32 PLUG RECEPTICLE NUT	X8257	2
13	10-24 FABRIC MOUNTING NUT	X8271	4
14	LABEL SERIAL NUMBER 2X2 PLAIN	X8459	1
15	DEUTER HARNESS	X9658	1
16	HOUSING	X9664	1
17	6 QT LID	X9666	1
18	EXHAUST FILTER PLATE	X9667	1
19	INLET FILTER BASE	X9668	1
20	MOTOR SHIELD	X9669	1
21	HARNESS FRAME	X9670	1
22	MOTOR MOUNTING BRACKET	X9671	1
23	BELT CLIP PANEL	X9672	2
24	PLUG RECEPTICLE	X9677	1
25	6 QUART BAG	X9679	1
26	5.1" MOTOR GASKET	X9680	1
27	RUBBER MOTOR MOUNT	X9681	3
28	EXHAUST FILTER	X9682	1
29	INLET FILTER	X9683	1
30	MOTOR PLATE GASKET	X9684	1
31	HOUSING BUMPER	X9685	1
32	POWR-FLITE LABEL	X9687	1
33	MOTOR MOUNTING BOLT	X9688	3
34	TOP HARNESS SCREW	X9688	2
35	8-18 HI-LO SCREW	X9690	5
36	8-18 HI-LO SCREW ZINC PLATED .75" LONG	X9676	2
37	1/4-20 CLIP NUT	X9691	2
38	WARNING LABEL	X9697	1
39	HARNESS LABEL	X9698	1
40	MOTOR MOUNTING WELDNUT	X9713	3
41	EXTENSION CORD	X9714	1
42	CORD HOOK	X9718	1
43	COMFORT PRO LABEL	X9729	1
44	SCREW CAP BASE	X9733	3
45	SCREW CAP	X9734	3
46	6 QUART HEPA BAG	X9678	10 pak
47	CRI GOLD LABEL	X9742	1
48	FABRIC MOUNTING BOLT	X9746	4
49	FABRIC MOUNTING WASHER	X9747	8
50	PLUG RECEPTICLE SCREW	X9748	2
51	HARNESS MOUNTING GASKET	X9752	1
52	STEEL MOUNTING PLATE	X9753	1
53	SCREW 1/4-20 PHIL PAN	X9754	2
54	MOTOR RESET LABEL	X9755	1

# SCHEMATIC AND PARTS LIST - BP6P

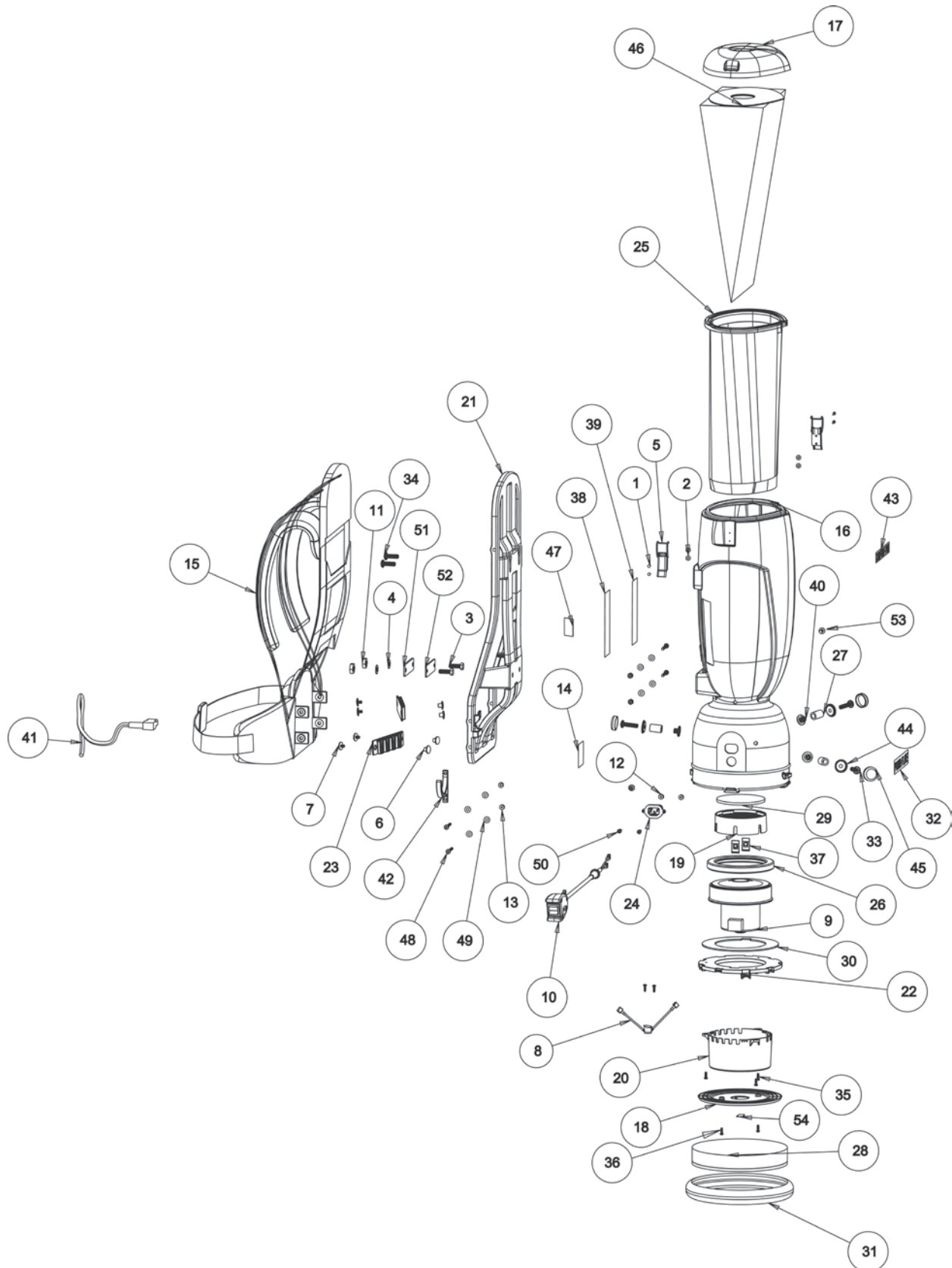




# PARTS LIST - BP6P

ITEM	DESCRIPTION	PART #	QTY
1	3.2 ALUMINUM DOMED RIVET	X9758	4
2	#6 FLAT WASHER ZP	1575	4
3	BOTTOM HARNESS BOLT	3361	2
4	HARNESS MOUNTING WASHER	7CR004	2
5	LID LATCH	A352-3300	2
6	FEMALE RIVET FOR BELT PANEL	A352-9401	4
7	BELT PANEL MOUNTING SCREW	A352-9402	4
8	THERMAL RESET SWITCH	B333-0400B	1
9	5.1" VACUUM MOTOR	B395-2000	1
10	BACKPACK SWITCH HARNESS	C352-2800	1
11	NUT 5/16 LOCK W/ NYLON INSERT	X8248	2
12	6-32 PLUG RECEPTICLE NUT	X8257	2
13	10-24 FABRIC MOUNTING NUT	X8271	4
14	LABEL SERIAL NUMBER 2X2 PLAIN	X8459	1
15	DEUTER HARNESS	X9658	1
16	6 QT HOUSING	X9664	1
17	6 QT LID	X9666	1
18	EXHAUST FILTER PLATE	X9667	1
19	INLET FILTER BASE	X9668	1
20	MOTOR SHIELD	X9669	1
21	HARNESS FRAME	X9670	1
22	MOTOR MOUNTING BRACKET	X9671	1
23	BELT CLIP PANEL	X9672	2
24	PLUG RECEPTICLE	X9677	1
25	6 QUART BAG	X9679	1
26	5.1" MOTOR GASKET	X9680	1
27	RUBBER MOTOR MOUNT	X9681	3
28	EXHAUST FILTER	X9682	1
29	INLET FILTER	X9683	1
30	MOTOR PLATE GASKET	X9684	1
31	HOUSING BUMPER	X9685	1
32	POWR-FLITE LABEL	X9687	1
33	MOTOR MOUNTING BOLT	X9688	3
34	TOP HARNESS SCREW	X9688	2
35	8-18 HI-LO SCREW	X9690	5
36	8-18 HI-LO SCREW ZINC PLATED .75" LONG	X9676	2
37	1/4-20 CLIP NUT	X9691	2
38	WARNING LABEL	X9697	1
39	HARNESS LABEL	X9698	1
40	MOTOR MOUNTING WELDNUT	X9713	3
41	EXTENSION CORD	X9714	1
42	CORD HOOK	X9718	1
43	COMFORT PRO LABEL	X9729	1
44	SCREW CAP BASE	X9733	3
45	SCREW CAP	X9734	3
46	6 QUART HEPA BAG	X9678	10 pak
47	CRI GOLD LABEL	X9742	1
48	FABRIC MOUNTING BOLT	X9746	4
49	FABRIC MOUNTING WASHER	X9747	8
50	PLUG RECPTICLE SCREW	X9748	2
51	HARNESS MOUNTING GASKET	X9752	1
52	STEEL MOUNTING PLATE	X9753	1
53	SCREW 1/4-20 PHIL PAN	X9754	2
54	MOTOR RESET LABEL	X9755	1
55	SCREW 1/4-20X1/2 PHIL PAN	7BS003-BLK	1
56	AC LEVER	X9699	1
57	AC GASKET	X9695	1
58	SCREW #8 X 3/8 PHIL PAN	X8201	1
59	SOUND DAMPENING FOAM FILTER	X9717	1
60	AC LEVER LABEL	X9756	1

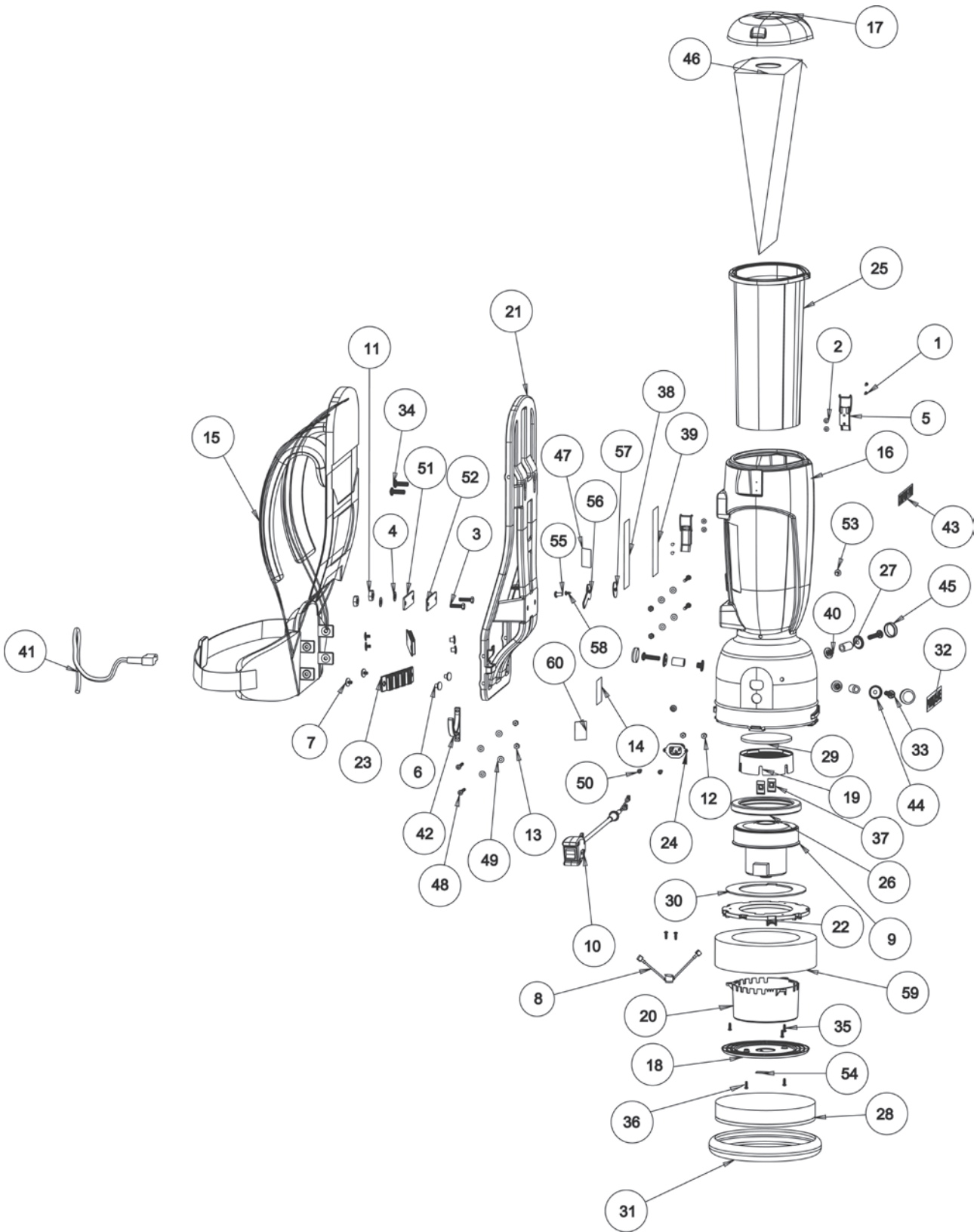
# SCHEMATIC AND PARTS LIST - BP10S



# PARTS LIST - BP10S

ITEM	DESCRIPTION	PART #	QTY
1	3.2 ALUMINUM DOMED RIVET	X9758	4
2	#6 FLAT WASHER ZP	1575	4
3	BOTTOM HARNESS BOLT	3361	2
4	HARNESS MOUNTING WASHER	7CR004	2
5	LID LATCH	A352-3300	2
6	FEMALE RIVET FOR BELT PANEL	A352-9401	4
7	BELT PANEL MOUNTING SCREW	A352-9402	4
8	THERMAL RESET SWITCH	B333-0400B	1
9	5.1" VACUUM MOTOR	B395-2000	1
10	BACKPACK SWITCH HARNESS	C352-2800	1
11	NUT 5/16 LOCK W/ NYLON INSERT	X8248	2
12	6-32 PLUG RECEPTICLE NUT	X8257	2
13	10-24 FABRIC MOUNTING NUT	X8271	4
14	LABEL SERIAL NUMBER 2X2 PLAIN	X8459	1
15	DEUTER HARNESS	X9658	1
16	HOUSING	X9663	1
17	10 QT LID	X9665	1
18	EXHAUST FILTER PLATE	X9667	1
19	INLET FILTER BASE	X9668	1
20	MOTOR SHIELD	X9669	1
21	HARNESS FRAME	X9670	1
22	MOTOR MOUNTING BRACKET	X9671	1
23	BELT CLIP PANEL	X9672	2
24	PLUG RECEPTICLE	X9677	1
25	10 QUART BAG	X9692	1
26	5.1" MOTOR GASKET	X9680	1
27	RUBBER MOTOR MOUNT	X9681	3
28	EXHAUST FILTER	X9682	1
29	INLET FILTER	X9683	1
30	MOTOR PLATE GASKET	X9684	1
31	HOUSING BUMPER	X9685	1
32	POWR-FLITE LABEL	X9687	1
33	MOTOR MOUNTING BOLT	X9688	3
34	TOP HARNESS SCREW	X9688	2
35	8-18 HI-LO SCREW	X9690	5
36	8-18 HI-LO SCREW ZINC PLATED .75" LONG	X9676	2
37	1/4-20 CLIP NUT	X9691	2
38	WARNING LABEL	X9697	1
39	HARNESS LABEL	X9698	1
40	MOTOR MOUNTING WELDNUT	X9713	3
41	EXTENSION CORD	X9714	1
42	CORD HOOK	X9718	1
43	COMFORT PRO LABEL	X9729	1
44	SCREW CAP BASE	X9733	3
45	SCREW CAP	X9734	3
46	10 QUART HEPA BAG	X9732	10 pak
47	CRI GOLD LABEL	X9742	1
48	FABRIC MOUNTING BOLT	X9746	4
49	FABRIC MOUNTING WASHER	X9747	8
50	PLUG RECEPTICLE SCREW	X9748	2
51	HARNESS MOUNTING GASKET	X9752	1
52	STEEL MOUNTING PLATE	X9753	1
53	SCREW 1/4-20 PHIL PAN	X9754	2
54	MOTOR RESET LABEL	X9755	1

# SCHEMATIC AND PARTS LIST - BP10P



# PARTS LIST - BP10P

ITEM	DESCRIPTION	PART #	QTY
1	3.2 ALUMINUM DOMED RIVET	X9758	4
2	#6 FLAT WASHER ZP	1575	4
3	BOTTOM HARNESS BOLT	3361	2
4	HARNESS MOUNTING WASHER	7CR004	2
5	LID LATCH	A352-3300	2
6	FEMALE RIVET FOR BELT PANEL	A352-9401	4
7	BELT PANEL MOUNTING SCREW	A352-9402	4
8	THERMAL RESET SWITCH	B333-0400B	1
9	5.1" VACUUM MOTOR	B395-2000	1
10	BACKPACK SWITCH HARNESS	C352-2800	1
11	NUT 5/16 LOCK W/ NYLON INSERT	X8248	2
12	6-32 PLUG RECEPTICLE NUT	X8257	2
13	10-24 FABRIC MOUNTING NUT	X8271	4
14	LABEL SERIAL NUMBER 2X2 PLAIN	X8459	1
15	DEUTER HARNESS	X9658	1
16	HOUSING	X9663	1
17	10 QT LID	X9665	1
18	EXHAUST FILTER PLATE	X9667	1
19	INLET FILTER BASE	X9668	1
20	MOTOR SHIELD	X9669	1
21	HARNESS FRAME	X9670	1
22	MOTOR MOUNTING BRACKET	X9671	1
23	BELT CLIP PANEL	X9672	2
24	PLUG RECEPTICLE	X9677	1
25	10 QUART BAG	X9692	1
26	5.1" MOTOR GASKET	X9680	1
27	RUBBER MOTOR MOUNT	X9681	3
28	EXHAUST FILTER	X9682	1
29	INLET FILTER	X9683	1
30	MOTOR PLATE GASKET	X9684	1
31	HOUSING BUMPER	X9685	1
32	POWR-FLITE LABEL	X9687	1
33	MOTOR MOUNTING BOLT	X9688	3
34	TOP HARNESS SCREW	X9688	2
35	8-18 HI-LO SCREW	X9690	5
36	8-18 HI-LO SCREW ZINC PLATED .75" LONG	X9676	2
37	1/4-20 CLIP NUT	X9691	2
38	WARNING LABEL	X9697	1
39	HARNESS LABEL	X9698	1
40	MOTOR MOUNTING WELDNUT	X9713	3
41	EXTENSION CORD	X9714	1
42	CORD HOOK	X9718	1
43	COMFORT PRO LABEL	X9729	1
44	SCREW CAP BASE	X9733	3
45	SCREW CAP	X9734	3
46	10 QUART HEPA BAG	X9732	10 pak
47	CRI GOLD LABEL	X9742	1
48	FABRIC MOUNTING BOLT	X9746	4
49	FABRIC MOUNTING WASHER	X9747	8
50	PLUG RECPTICLE SCREW	X9748	2
51	HARNESS MOUNTING GASKET	X9752	1
52	STEEL MOUNTING PLATE	X9753	1
53	SCREW 1/4-20 PHIL PAN	X9754	2
54	MOTOR RESET LABEL	X9755	1
55	SCREW 1/4-20X1/2 PHIL PAN	7BS003-BLK	1
56	AC LEVER	X9699	1
57	AC GASKET	X9695	1
58	SCREW #8 X 3/8 PHIL PAN	X8201	1
59	SOUND DAMPENING FOAM FILTER	X9717	1
60	AC LEVER LABEL	X9756	1

# POWR-FLITE LIMITED WARRANTY

Powr-Flite will repair or exchange parts for your vacuum in the event of a manufacturing defect as follows:

**PARTS:** New or comparable rebuilt parts, for three years after original purchase. Lifetime warranty on molded body.

**LABOR:** Labor warranty for three years. Carry-in service can be obtained during the warranty period by taking your vacuum to an Authorized Powr-Flite Warranty Service Center.

**IMPORTANT WARRANTY CONDITIONS:** A purchase receipt or other proof of date of original consumer purchase also will be required before warranty service is rendered.

This warranty covers normal use and does not cover damage which occurs in shipment or failure resulting from alteration, accident, misuse, abuse, neglect, or improper maintenance.

**STATEMENT:** This warranty is not transferable and extends only to the original purchaser when a new Powr-Flite vacuum is purchased from an Authorized Powr-Flite Dealer. This warranty gives you specific legal rights, and you may have other rights that vary from state to state.

***Powr-Flite***  
BETTER QUALITY · BETTER PRICES · GUARANTEED

Powr-Flite  
3101 Wichita Ct.  
Fort Worth, Texas 76140  
800.880.2913  
Powr-Flite.com

©Powr-Flite, All Rights Reserved

X9712 4/2013