

Thank you for purchasing this faucet product. By following the care instructions in this booklet you will enjoy this quality item for many years to come.

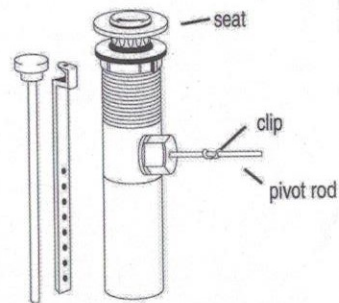
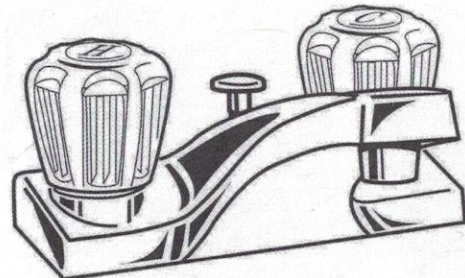
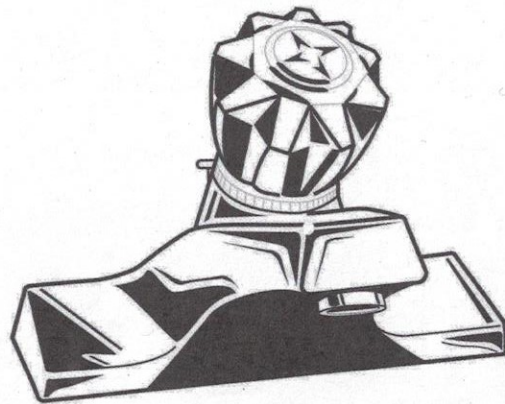
Like the legendary artisans of old world Italy, our faucets are crafted with the skill and quality to last a lifetime. You can appreciate the fine craftsmanship in your own home with our fixtures in contemporary designs, meticulously engineered with water and energy-saving features.

### Care Instructions

To clean, wipe gently with a soft, damp cloth, then wipe dry. The **Products** finishes are very durable. However to ensure long lasting luster, harsh abrasives or polishes should be avoided.



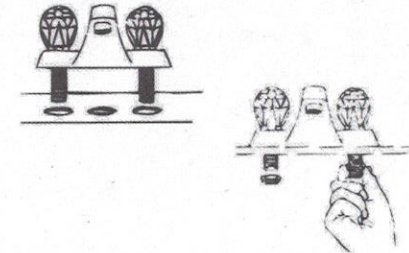
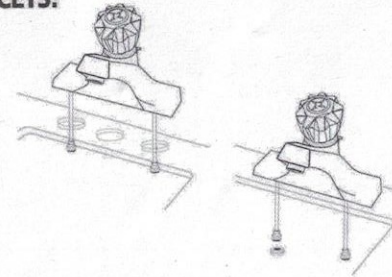
*Please Conserve Water!*



## SINGLE & DOUBLE HANDLE LAVATORY FAUCET INSTALLATION INSTRUCTIONS

### TO INSTALL SINGLE & DOUBLE HANDLE FAUCETS:

- 1 Turn off water supply at valves or main.
- 2 Position faucet on the sink. From underneath sink, secure faucet with mounting nuts. Hand-tighten nuts, check faucet position, then wrench tighten.
- 3 Apply teflon tape or pipe thread compound to male faucet threads. Attach water supply lines to faucet and valves.
- 4 Install Pop-Up assembly.
- 5 Make sure all connections are tight and turn on water supply.
- 6 Unscrew and remove aerator. Turn water on and check for leaks. Run hot and cold water uninterrupted for about 1 minute to remove any residue from the lines. Replace aerator.



### TO INSTALL POP-UP ASSEMBLY:

- A Thread mounting nut and bottom gasket onto drain body. Wrap top threaded end of the drain body with teflon tape.
- B Insert drain body up through the drain opening and screw seat onto drain body. Hold the drain body with pivot rod opening facing the back of the sink. Hand tighten the mounting nut. Insert pop-up stopper.
- C Place pivot rod in proper opening. Slide pivot nut over rod and thread nut onto drain body. Tighten firmly, but DO NOT OVER-TIGHTEN.
- D With lift rod in position in the faucet, insert lift rod through lift rod strap and secure with set screw.
- E Guide the pivot rod through any hole on the lift rod strap and secure it with the spring clip. Adjust the height of the lift rod by resetting the set screw.

