



OMS THD SKU# 1001 767 083

Model # TY477-1611-0

ASSEMBLY INSTRUCTIONS

65in 160 Light LED Reindeer & 46in 120 Light LED Gold Glitter and Silver Sleigh

USE AND CARE GUIDE

PLANNING ASSEMBLY

Carefully remove all the parts from the box and place them on a flat surface. Please note that many of the parts are connected by the lighting string that runs throughout the item. Remove the parts with care not to damage the lighting string or parts. Read the entire manual prior to assembly and identify all the parts included in the package against the parts list. If any parts are missing or damaged do not attempt assembly. Contact our customer service center or return the item to place of purchase with purchase receipt. Assembly of this product may require more than one person.

Pre-Operation

CAUTION: Grasp the plug to insert or remove from the power source. Do not unplug by pulling on cord.

CAUTION: The lighting string on this product is rated at 9.6 Watts (0.08 Amps) for Reindeer and rated at 7.2 Watts (0.06 Amps) for Sleigh. Do not overload. Do not connect to another lighting string, decorative outfit or other electrical products. Before you use or re-use this product inspect it carefully. Return to place of purchase with purchase receipt or discard if the product has cuts, damage, frayed wire insulation on cords, cracks in the socket enclosures, loose connections or exposed copper wire.

Care and Cleaning

- Carefully remove the product from wherever it is placed. This helps to avoid any undue strain or stress on the product connections and wires. If the product is placed somewhere other than the ground it should be well secured and stable.
- Wipe the unit with a damp cloth and allow the unit to dry before storing.
- Store the product neatly in a cool, dry location protected from sunlight.

Guarantee

What is Covered

The product is intended for residential seasonal use for 90 days per year. This product is covered by a 90 days limited guarantee due to defects in material and workmanship. Return the product with purchase receipts to the location of purchase for refund within 90 days of purchase.

What is Not Covered

This warranty does not cover commercial use, normal wear and tear, products not used in accordance with directions provided on or with the product, burn out of bulbs or LEDs, batteries, products that have been subjected to unauthorized repair and/or modification and damage caused by shipping and improper handling, alterations, misuse or accidents. Questions, problems, missing parts? Before returning to the store, call Home Accents Holiday Customer Service 8 a.m.-6 p.m., EST, Monday-Friday



Thank you!

We appreciate the trust and confidence you have placed in Home Accents through the purchase of this 65in 160 Light LED Reindeer & 46in 120 Light LED Gold Glitter and Silver Sleigh. We strive to continually create quality products designed to enhance your home. Visit us online to see our full line of products available for your home decoration needs. Thank you for choosing Home Accents!

1-877-527-0313

HOMEACCENTSHOLIDAY.COM

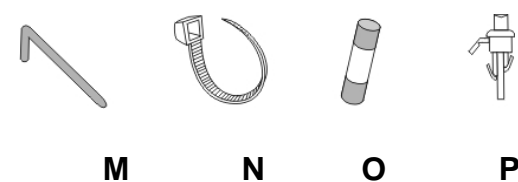
Parts List		
Locater	Name	Qty.
A	Antler	2
B	Head/Neck	1
C	Ear	2
D	Body	1
E	Front Leg	2
F	Hind Leg	2
G	Tail	1
H	Front/Rear/Seat Panel	3
I	Side Panel	4
J	Runner	4
K	Decorative Runner Cap	2
L	Bow	2

Hardware List		
Locater	Name	Qty.
M	Ground Stake	8
N	Plastic Tie	20
O	Spare Fuse	4
P	Spare Bulb	7

Diagram of Parts



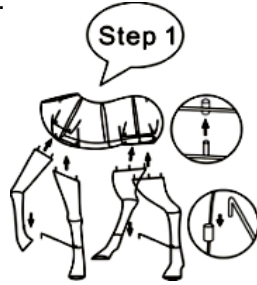
Hardware



ASSEMBLY

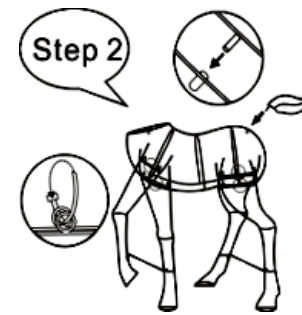
1. Assembling the Legs to the Body

Insert the metal connecting rods attached to each Leg (E&F) into the matching holes on the underside of the Reindeer Body (D) and fasten them with Plastic Tie (N). The Legs come with metal bars attached to stabilize the Deer. Insert the hooked end of the metal bars into the metal nut on the opposite Leg.



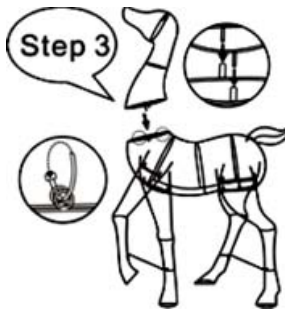
2. Assembling the Tail to the Body

Insert the connecting rod on the Tail (G) into the connecting holes at the rear of the Body (D).



3. Assembling the Head / Neck to the Body

Insert the connecting rods on the bottom of the Head/Neck (B) into the Connecting holes on the front of the Body (D) and fasten them with Plastic Tie (N).



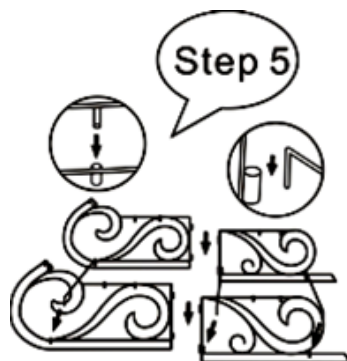
4. Assembling the Antlers and Ears to the Head

Insert the connecting rods on both Antlers and Ears (A&C) into the connecting holes at the top of Head (B).



5. Assembling the Runners

The Sleigh has 4 Runners (J). Two Front and two Rear. Insert the connecting rods on each Front Runner into the matching holes on the Rear Runners. Fasten with Plastic ties. Hook each Horizontal Stabilizing Bar into the matching holes on the opposite side Runner.



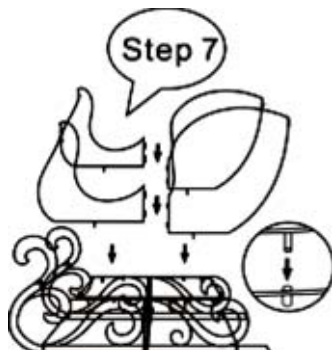
6. Assembling the Decorative Runner Cap to the Front Runner

Insert the connecting rod on the Decorative Runner Cap (K) into the matching hole of the front of the Runners (J) and fasten them with Plastic Tie (N).



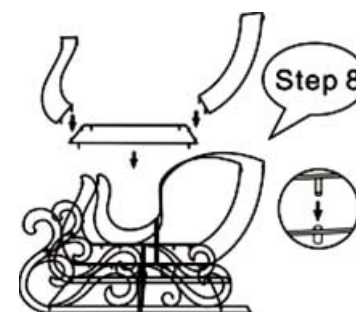
7. Assembling the Side Panels to the Rear

The Sleigh has 4 Sides Panels (I). Two Front and 2 Rear. Insert the connecting rods on each Front Side Panel into the matching holes on the Rear Side Panels. Insert the connecting rods on the bottom of the Side Panels (I) into the matching holes on the top of the Runners. Fasten with Plastic Ties (N).



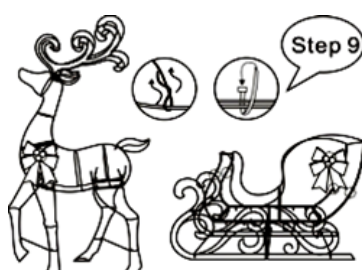
8. Assembling the Front and Back Panel to the Side Panel

Insert the connecting rods on the bottom of the Front and Back Panel (H) into the matching holes on the top of the Seat Panel (H). Insert the connecting rods on the top of the Front and Back Panels into the holes on the Side Panels (I). Insert the connecting rods on the bottom of the Seat Panel into Runners. Fasten with Plastic Ties (N).



9. Assembling the Bow to the Reindeer and Sleigh

Insert the wire tie on the Bow (L) through the holes of the material on Reindeer and Sleigh then twist the wires together to secure.



10 Securing the Reindeer and Sleigh to the Ground

Secure the Reindeer and Sleigh to the ground with the Ground Stakes (M).

