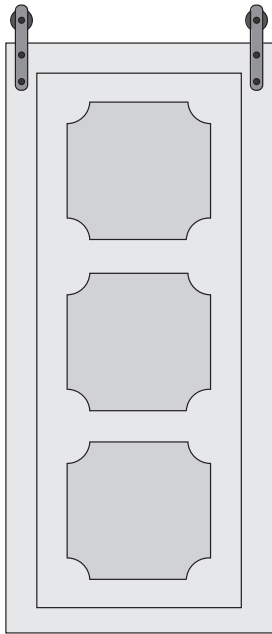


# BARN DOOR INSTALLATION GUIDE

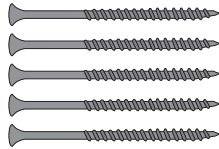
## WHAT'S INCLUDED?



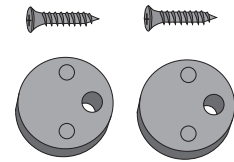
1x Barn door



1x Header board w/ Rail attached



5x 3" Wood screws



2x Safety stops and screws



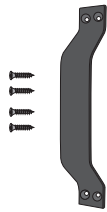
5x Screw head covers



1x Hex key

## BONUS PARTS

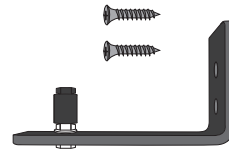
These items are optional.



1x Handle  
4x Screws



1x Handle install guide



1x Floor guide  
2x Screws

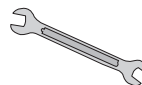
## TOOLS YOU'LL NEED



Pencil



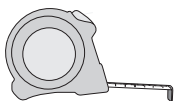
Power drill



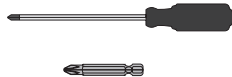
Wrench



Stud finder



Tape measure



Phillips screwdriver or drill bit

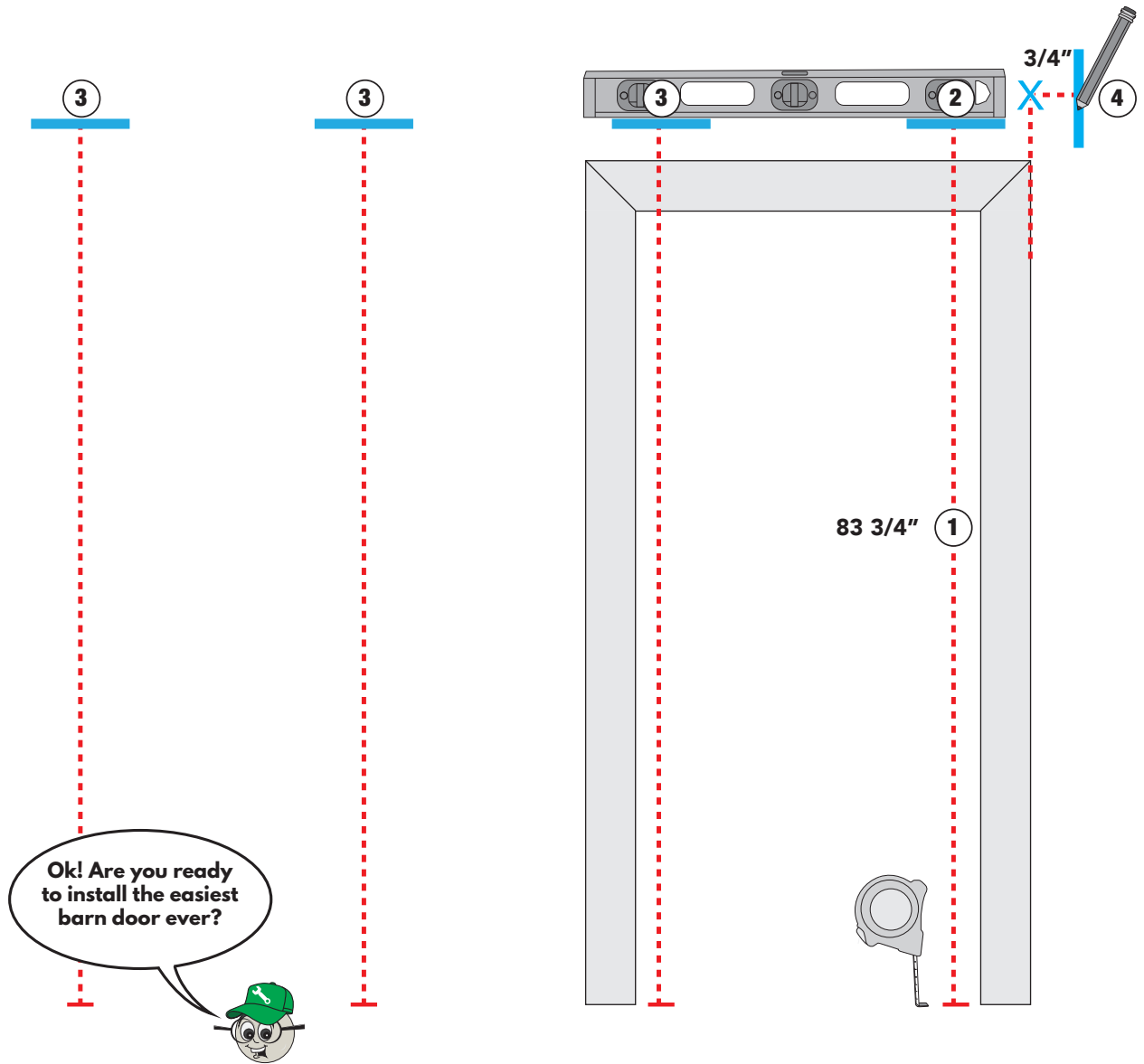


36" to 48" Level



Step ladder

# MEASURE & MARK



Ok! Are you ready to install the easiest barn door ever?



1. Using your measuring tape, measure up 83 3/4 inches from the floor.



2. Take your pencil and mark this spot.



3. Place your level on the marked spot, and draw a line over the doorway opening and extending to the side your door will slide.

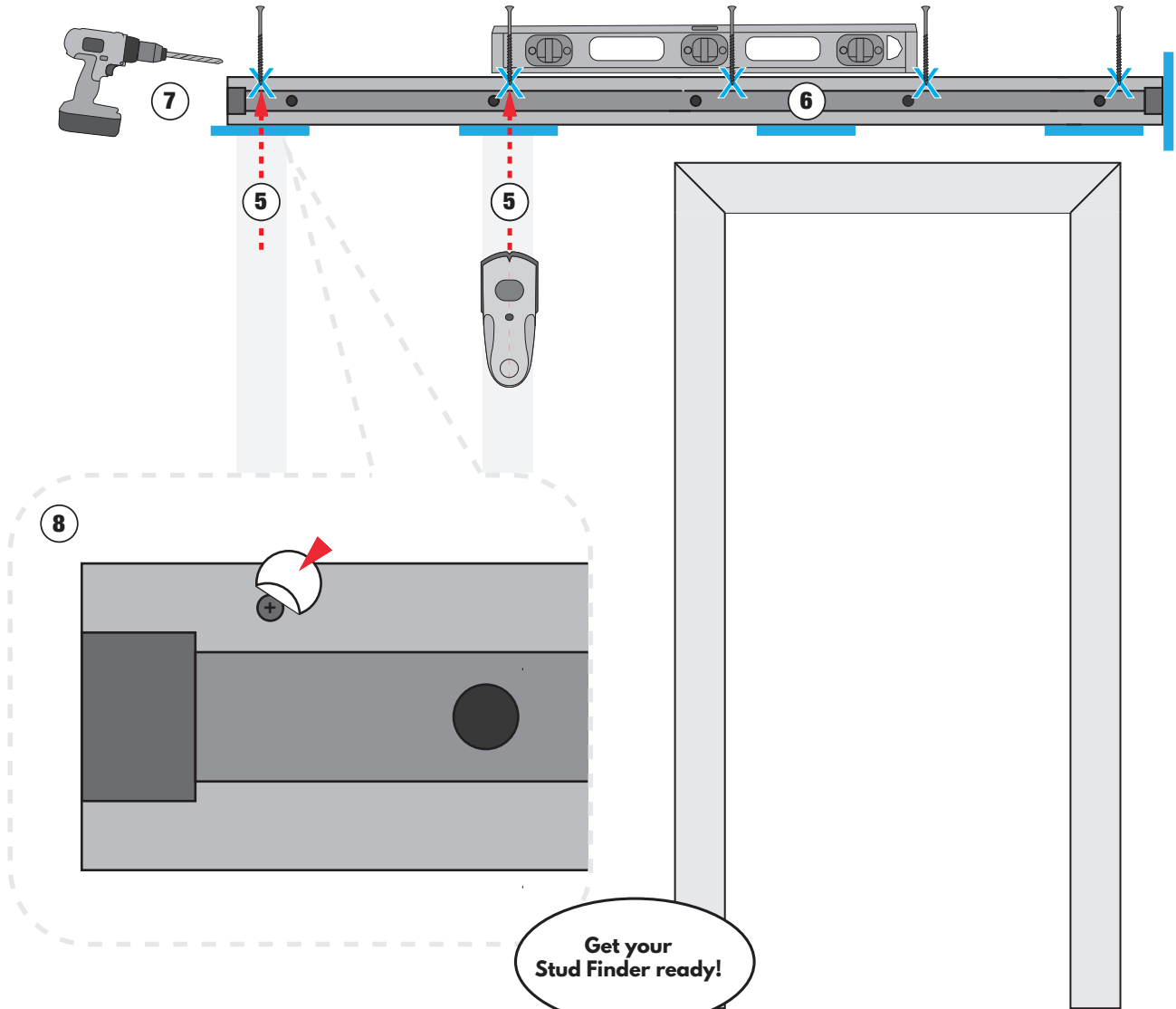


4. Mark the edge of the doorway with an X, then measure out 3/4" from the edge of the doorway, and draw a vertical line to help you align the header board.

You're doing great so far!



# MOUNT THE HEADER BOARD



Get your Stud Finder ready!



5. Find the two areas with a stud along your marked line past the opening. **X** marks the spot! The other 3 wood screws will be used above the opening where you will be drilling into solid wood.



6. Grab your DIY partner for this next part. Lift the header board, and line up the bottom of your board with your horizontal marked line.



7. It's power tool time! Drill a wood screw through the header board above the track into the two marked stud locations and position 3 above the doorway. Keep using the level to ensure the board doesn't slip off level.



8. Apply screw head covers to cover the screw holes on the header board.

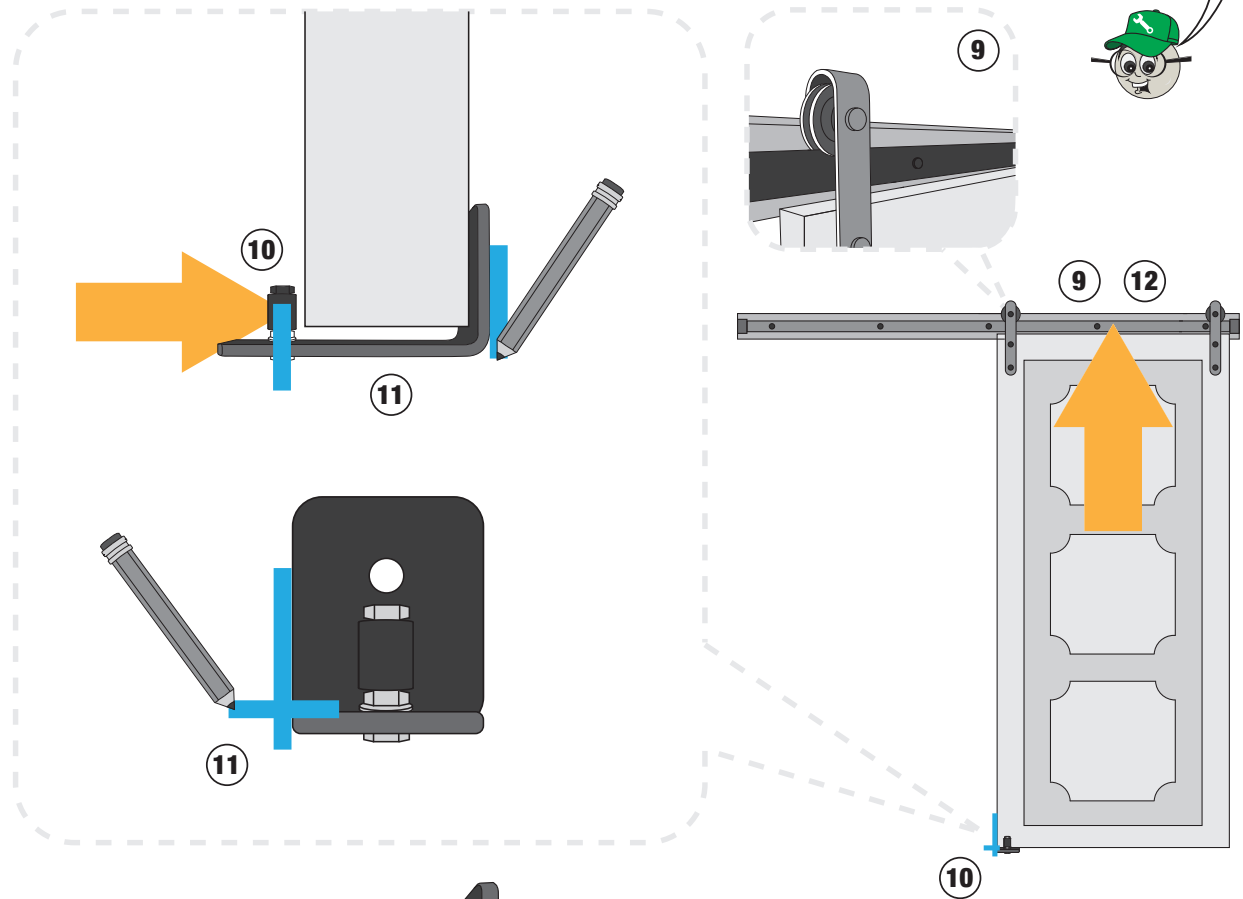
Your header board & track are now secured. Look at you go! We are so proud.



# FLOOR GUIDE







## BONUS PART

Heads up!  
This is the most  
challenging part.



Let's have a little chat.  
Your kit provides an optional  
floor guide, which will prevent  
the door from swinging into  
the room. If you want to use it,  
now is the time to install it.

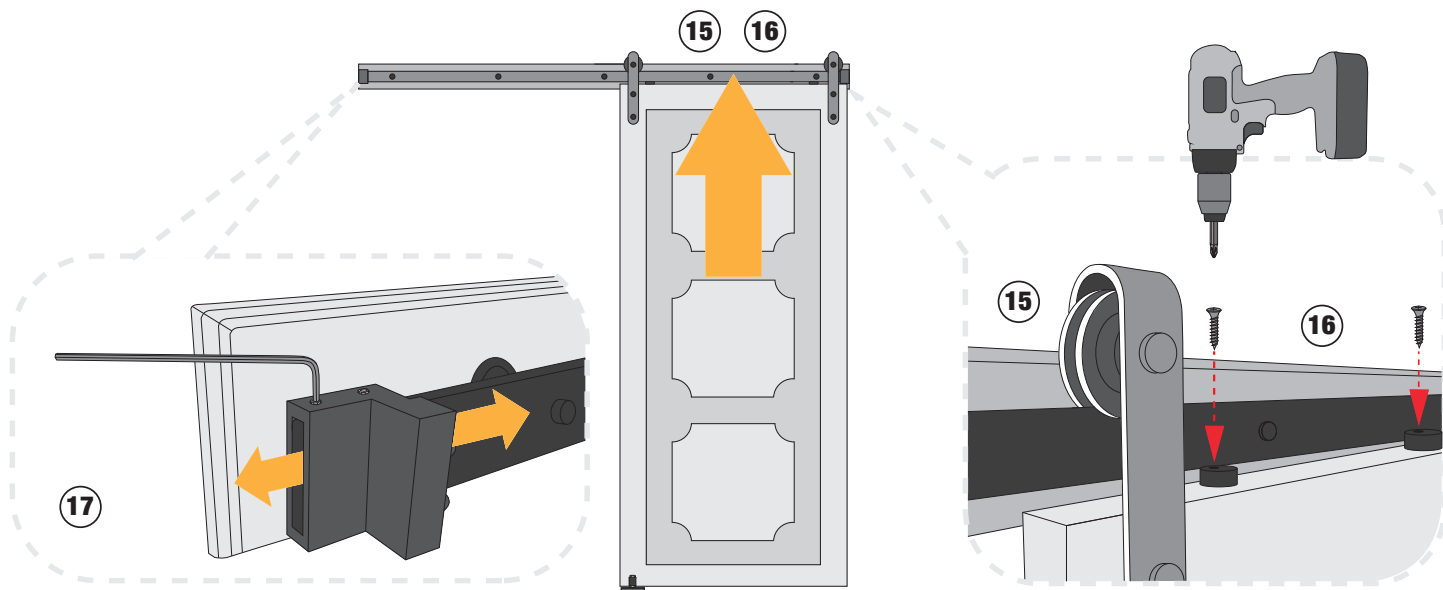


-  9. Lift the barn door up, and align the grooves in the wheels with the track, then slide the barn door into the closed position.
-  10. Align the floor guide with the bottom corner of the barn door on the side in which the door slides, then slide the floor guide's bolt towards the door leaving a little breathing room.
-  11. Now that you have aligned the floor guide, mark the bolt position so you know where to tighten, and mark the position of the floor guide on the wall so you know exactly where to mount it.
-  12. Lift the door off the track and place to the side.
-  13. Tighten the bolt on the Floor Guide at the marked position.
-  14. Align the Floor Guide with the marks on the wall, and screw the floor guide into the wall (or floor board) using the 2 wood screws provided with the Floor Guide.

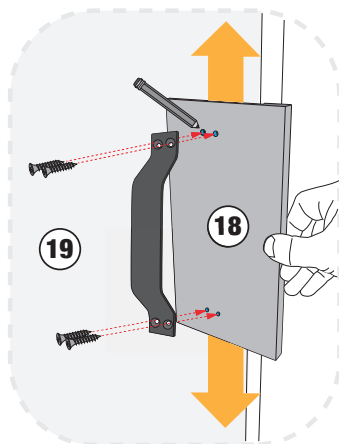
Your floor guide is  
now secured! Re-hang  
the door to check the  
floor guide position.





# HANG THE DOOR

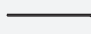



## BONUS PART




- 

15. Lift the barn door up, and align the grooves in the wheels with the track.
- 

16. Important! Install the 2 safety stops to prohibit the door from lifting off the track. Position each safety stop on top of the barn door near each wheel strap.
- 

17. Note: If necessary, adjust the placement of the barn door on the track over the opening. On each end of the track are track stops which may be adjusted if necessary using the hex key.
- 

18. Stop, it's handle time! Handles are optional. If you want to add the handle to the door line the handle placement guide up to the edge of your door. Lift, or lower to the desired height using the holes in the placement guide to mark where your screws will be placed.
- 

19. Remove the placement guide, and use the power drill to install your handle.