

400W Metal Fog Machine with Wireless Remote Control Set User Manual



READ AND SAVE THESE INSTRUCTIONS FOR FUTURE REFERENCE IMPORTANT SAFETY INSTRUCTION

CAUTION:

- Risk of burn, fire or electrical shock.
- For indoor use only.
- Please read instruction manual before handling.
- Don't immerse in liquid.
- Not for space heating purposes.

I. FOG MACHINE TECHNICAL SPECIFICATIONS

Item Code: 5724336

Model: FM400-ES

Rating Voltage: AC120V, 60Hz

Power: 400W

Ambient Temperature: -10 ~ 45°C

Fuse: 5A, 125V

Preheat Time: 3~ 5 Minutes

Fog Output: 2,000 CFM

Tank Capacity: 0.55 Liter

Dimensions: L236.5 × W147 × H194 mm
L9.3 × W5.7 × H7.6 inch

II. RECEIVER: TECHNICAL SPECIFICATIONS

Item Name: Receiver

Rating Voltage: AC120V, 60Hz

Model Number: QT-14R

Working Current: 50mA Max.

III. TRANSMITTER: TECHNICAL SPECIFICATIONS

Item Name: Transmitter

Working Voltage: 12V DC

Require: Includes (1) 12 volt, type 27-A battery. Battery is not Replaceable.

Model Number: QT-14T

Working Current: 15mA Max.

WARNING:

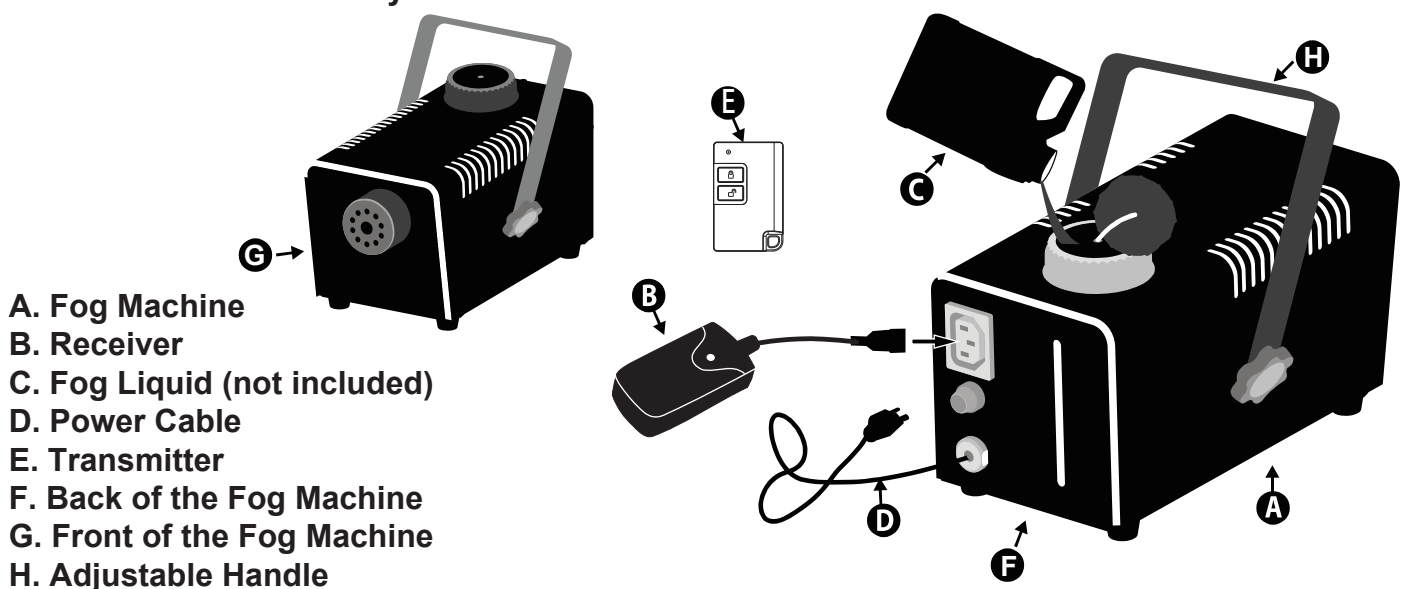
To prevent risk of personal injury, fire, and electric shock:

- Never leave unit unattended while plugged in. Unplug when not in use.
- Read all important safety instructions and cautions.
- Connect only to a properly grounded outlet.
- Place product on a flat, level HARD surface and connect the cord to prevent the product from overturning.
- For use only in covered areas. Keep unit dry, do not expose to rain or moisture. Do not immerse unit.

- Leave enough space for proper ventilation. Keep unit cool and away from other objects.
- Use only with SVI Fog Liquid (sold separately).
- Do not operate unit without fog liquid.
- Pour fog liquid carefully to avoid spills which could result in electrical shock. Do not use if liquid spills onto unit. Let unit dry completely before plugging in.
- Do not overfill the fog machine.
- Keep away from flames and flammable/explosive substances to avoid fire or explosions. Never pour flammable liquids such as gas, perfume etc. into the fog machine.
- Keep product and fog liquid out of reach of children. Use only under adult supervision.
- Do not spray in the direction of flames or people. Stay at least 20 inches (50cm) from the nozzle at the front of the unit.
- Do not obstruct the nozzle.
- Do not open unit. No user serviceable parts inside, please refer to your vendor. Only an electrician can change the power cord.
- Clean unit before storage to avoid damages.

OPERATION INSTRUCTION:

1. Remove all packaging before use. NOTE: Please contact the store if you find any broken or missing parts.
2. Place the unit on a flat, level surface.
3. Unscrew the lid on the reservoir tank towards the back of the Fog Machine and pour the Fog Liquid inside. Do not spill Fog Liquid onto the unit. Do not overfill. If liquid gets into Fog Machine, allow unit to dry completely before plugging in. Do not cut, pinch, or break the tube connected through the tank lid. Close the lid to the reservoir tank tightly. Always make sure there is enough Fog Liquid in the tank before using the Fog Machine.
4. Plug the Receiver into the back of the Fog Machine. Now connect the unit with the proper power supply (120V AC).
5. Warm up time is approximately 3 - 5 minutes. When fully heated, the light on the Receiver will turn on and the Fog Machine will be ready to produce fog.
6. Remove the battery's insulating piece at the back of the Transmitter for the first time you use it. You can see the "ON/OFF" buttons on the transmitter. Push "ON" to produce fog, and press "OFF" to stop the flow of fog.
7. Unplug the unit before refilling the fog machine, and follow the directions in Step 3.
8. Unplug the unit when not in use.
9. Parts list and Assembly



AUTO-STOP FUNCTION:

IF THE MACHINE STOPS PRODUCING FOG WHEN POWER SWITCH LIGHT IS ON, IT MAY NEED MORE FOG LIQUID. FIRST TURN THE MACHINE OFF, ADD MORE LIQUID, THEN RESTART MACHINE. THE MACHINE IS ENGINEERED TO STOP AUTOMATICALLY IF LIQUID IS TOO LOW.

ADDITIONAL INFORMATION

- a) It is normal for condensation to appear on the nozzle of the Fog Machine.**
- b) A small amount of fog may spray during or after operation.**
- c) The unit will have to reheat after long bursts of use. The unit will stop operation for a short period in order to heat up to operating temperature again. While this is happening, fog cannot be produced. The light on the Receiver will turn on again when the unit is ready to generate more fog.**

MAINTENANCE & SERVICING

Note: Use of fogger liquids not included or those other than SVI Fog Liquid are not recommended and may result in blockage, leakage, or other damage to the unit.

INSPECTION:

Before each use, check unit for any cracks in the enclosure, remote control, cords, and plugs. Make sure there are no exposed wires. Do not use if any of the above conditions are found.

CLEANING:

Should you experience low fog output after many hours of continuous operation or after the machine has been idle or in storage for a long time, it is recommended to run a cleaning solution through the system to prevent the accumulation of particles in the heating element.

- a. While the unit is unplugged and cool, empty all Fog Liquid from the machine and replace with a fog machine cleaning solution in the tank. SVI Fog Machine Cleaning Fluid (not included) is recommended. Plug unit in and allow to warm as usual.**
- b. Run unit in a well-ventilated area until tank is empty.**
- c. Cleaning is now complete.**

All fog machines are prone to clogging due to the consistency of Fog Liquid and the high temperatures at which it vaporizes. However a well maintained machine should provide years of reliable use.

STORAGE:

It is important to remove all fluid from the unit when storing for an extended period of time.

- 1. When the unit is unplugged and cool, empty all Fog Liquid from the machine. Plug in unit and allow to warm as usual.**
- 2. Run unit in a well-ventilated area for 10-seconds to confirm tank is empty and dry.**
- 3. Store on a flat, level surface. Keep in a well-ventilated, cool and dry location.**

For best performance, operate unit for 10-minutes every 3 months. Follow the Operation Instructions and Storage instructions accordingly.

FUSE REPLACEMENT

If the Fog Machine does not work at all when it is connected to the power socket, then it is probably that the fuse has been broken.

WARNING: Risk of electric shock and fire. Disconnect from power socket before replacing the fuse.

1. Turn the fuse knob counterclockwise to reveal the fuse.
2. Replace the fuse with the same size and type of fuse: 5A, 125V
3. Place fuse in cover and reinstall by turning clockwise. Be sure not to overtighten.

Note: This device complies with Part 15 of the FCC Rules. Operation is subject to the following two conditions: (1) this device may not cause harmful interference, and (2) this device must accept any interference received, including interference that may cause undesired operation.

Caution: Changes or modifications not expressly approved by the party responsible for compliance could void user's authority to operate the equipment.

NOTE: This equipment has been tested and found to comply with the limits for a Class B digital device, pursuant to Part 15 of the FCC Rules. These limits are designed to provide reasonable protection against harmful interference in a residential installation. This equipment generates, uses and can radiate radio frequency energy and, if not installed and used in accordance with the instructions, may cause harmful interference to radio communications. However, there is no guarantee that interference will not occur in a particular installation. If this equipment does cause harmful interference to radio or television reception, which can be determined by turning the equipment off and on, the user is encouraged to try to correct the interference by one or more of the following measures:

- Reorient or relocate the receiving antenna.
- Increase the separation between the equipment and receiver.
- Connect the equipment into an outlet on a circuit different from that to which the receiver is connected.
- Consult the dealer or an experienced radio/TV technician for help.

Congratulations on the purchase of your new fog machine!

FOR INDOOR USE ONLY

SAVE THESE INSTRUCTIONS

**BEFORE ASSEMBLING, REMOVE ALL THE ABOVE PARTS FROM BOX.
IF ANY PART IS MISSING, DO NOT ATTEMPT TO ASSEMBLE THE PRODUCT
AND CONTACT CUSTOMER SERVICE FROM 8:30AM TO 5:30PM PST
AT 1-877-527-0313, 1-855-428-3921. EMAIL CUSTOMERSERVICE@SVIUS.COM.**