

# Single Lever Basin Faucet



Model No.:YPG308



## Features:

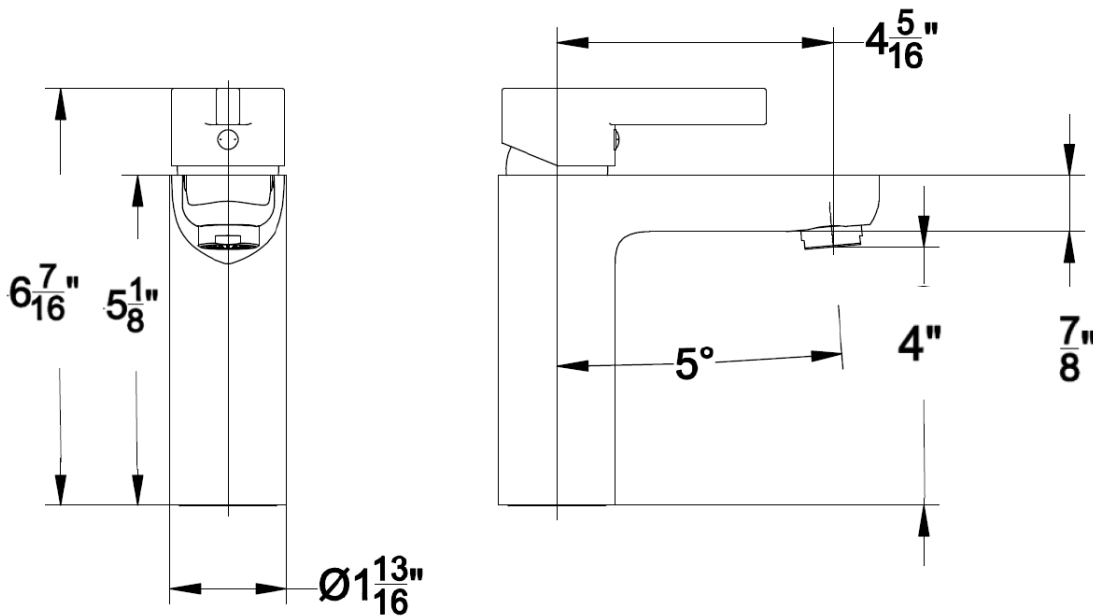
- 1.Material: low lead brass
- 2.Handle:zinc
- 3.Actuator:ABS
- 4.Valve: ceramic valve
- 5.100% pressure system tested.
- 6.CUPC approve

## Flow Rate:

1.2 GPM@ 60PSI

## Available Finishes:

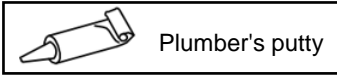
Chrome



ALL SIZE IN INCH

# Single Lever Basin Faucet Installation

## INSTALLATION MANUAL Tools You Will Need:



Plumber's putty



Pipe tape



Philips Screwdriver



Pliers



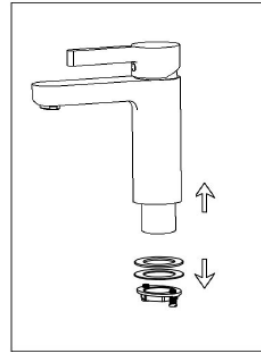
Adjustable wrench

### Notes before installation :

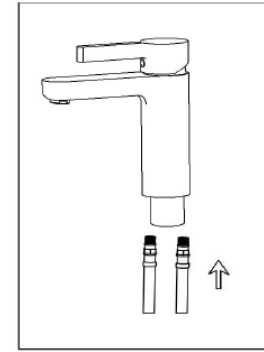
1. When you open the package .Please check the User Manual and Product maintenance knowledge and confirm all the parts are enough or not.
2. Before installation, please clean all the impurity and dirt inside plumbing. To avoid blocking the waterway and Water wave device and impact the product function.
3. Working water pressure :20-125psi ( Including the hot and cold water pressure )  
Working temperature : 5-71 degree
4. The pictures in manual is just diagrammatic drawing , if different, please based on the real product . If find difficult on installation, please contact with the professional install worker.
5. Please turn off the main water valve, if no body at home for long time

### Daily maintenance

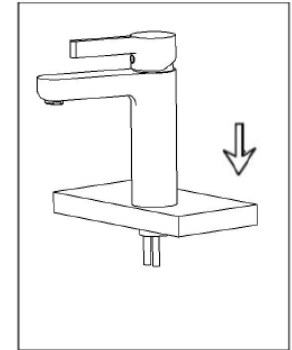
1. Please clean the aerator , shower , hose timely , in case the dirt block the waterway to occur the water flow decrease.
2. If the water flow decrease, please check the water pressure is ok or not . And check all connect parts and aerator whether be blocked by the dirt.
3. Please clean the faucet timely to keep the surface shining . Use clean water to clean, then dry the faucet with soft cotton cloth is ok. Do not clean with any abrasive cleanser, emery cloth or rough paper. Do not clean with any acid cleanser, polishing abrasive.
4. If need lots of clean , please do by following step
  - ① use clean water and soft cotton cloth to clean the dirt in the surface.
  - ② Suggest to use the following cleaner : Mild liquid detergent; Colorless glass cleaner, powdered detergent, without any polishing but can be soluble. Shiny cleaner not included abrasive action.
  - ③ after cleaning ,please clean all cleaner with clean water and dry it with cotton cloth.
  - ④ In case impact the water output, take apart the aerator, hose and shower, to clean timely.



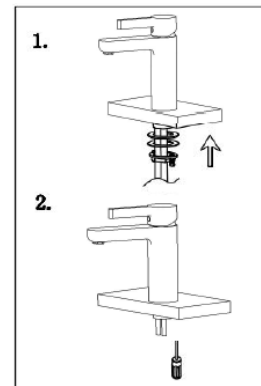
1. Remove rubber washer, metal washer and lock nut.



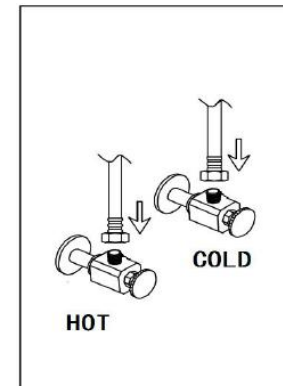
2. Tighten by screwing two screws if needed.



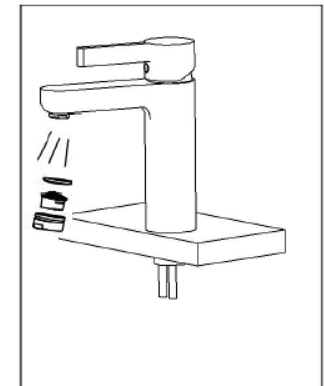
3. Install faucet through center hole.



4. Assembly rubber washer, metal washer and lock nut onto faucet, then use the screwdriver to tighten the lock nut.



5. Attach flexible hose to water supply, apply pipe tape on the threads before install.



6. Remove the aerator, turn on faucet handle for 1 minute to flush debris from faucet. Close the handles and re-assemble the shower.