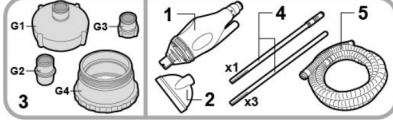


SKOOBA Above Ground Pool Cleaner

NE4220

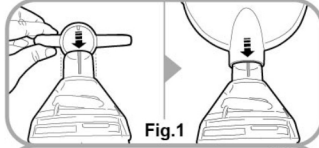
GB | Pool Vacuum Kit

1. MAIN BODY (WITH PRE-FILTER BAG INSIDE)
2. SUCTION HEAD
3. CONNECTORS
4. POLES
5. HOSE SECTION

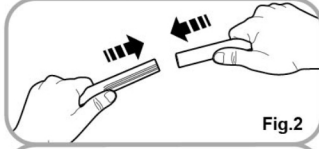


HOW TO ASSEMBLE YOUR SKOOBA™

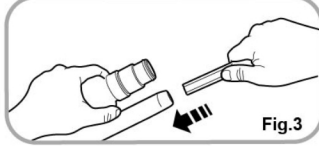
1. Align the rib of the suction head to the notch on the nozzle of cleaner hood and then slide the suction head to the hood until it stops. (Fig.1)



2. Select a sufficient number of the pole sections to suit your pool size. Total length should allow both hands to grip during operation. Assemble the pole sections by inserting the grooved end of one section into the round end of the next one, finishing with the last section that has the plastic grip. Slide together until grooved area is fully inserted. (Fig.2)

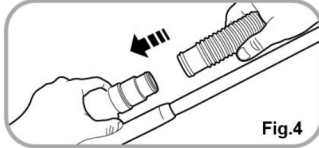


3. Insert the grooved end of assembled poles into the main body securely. (Fig.3)



ASSEMBLE THE HOSE TO THE MAIN BODY

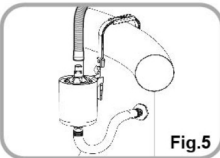
To remove entrapped air in the hose, place the hose cuff towards the pool water inlet hole to let water flows in and push out the entrapped air. Immerse the main body under the water. When bubbles stop coming from the main unit, connect either open end of the hose to the hose cuff of the body and slide on as far as it can go. (Fig.4)



CONNECT SKOOBA™ TO THE POOL OUTLET

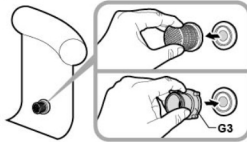
WARNING! TURN OFF the pump before connecting SKOOBA™ to the pool outlet.

- 1) If you have a surface wall skimmer: Take the open end of the hose and connect it onto the vacuum plate of your skimmer. Slide the hose as far as it can go and apply clamp (not included) to secure it on the vacuum plate. (Fig.5)
- 2) If you don't have a wall skimmer: 4 connectors (G1/G2/G3/G4) are provided in the kit to fit the 7 most common types of strainer (see below) used in soft wall pools. According to the strainer used in your pool, select and attach the correct one to the strainer. Tighten by hand only.



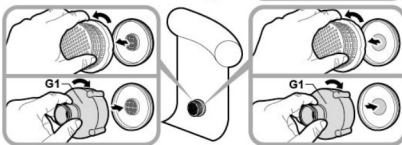
Ø40mm (1 1/2 in) Strainer

Detach the strainer cover and press G3 on it.



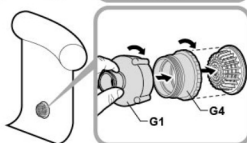
Ø80mm (3 in) Strainer

Unscrew the strainer cover and screw on G1.



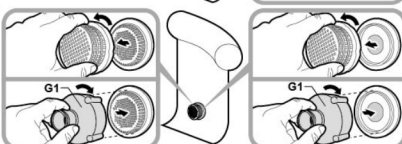
Ø92mm (3 5/8 in) Strainer (with side thread)

Screw G1 onto G4, and then align and screw G4 onto the strainer.



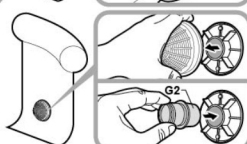
Ø110mm (4 1/4 in) Strainer

Unscrew the strainer cover and screw G1 onto the middle thread of the strainer.



Ø36mm (1 1/2 in) Strainer Hole

Detach the strainer cover and directly insert G2 into the strainer hole.



Take the open end of the hose, connect it onto the connector and slide on as far as it can go.

HOW TO OPERATE YOUR SKOOBA™

When your SKOOBA™ is ready, turn your pump ON and start using SKOOBA™ to clean the bottom of your pool.

Your SKOOBA™ is made to vacuum debris from the bottom of your pool. The internal pre-filter bag is designed to trap leaves and larger debris, which could otherwise clog the filter of your pool. Make sure to empty this pre-filter bag regularly to ensure the maximum suction power.

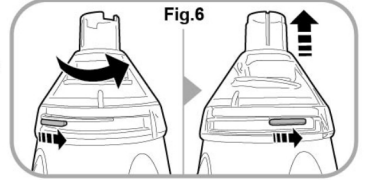
NOTE: Never use your SKOOBA™ without the pre-filter bag. Failure to do so may clog the filter of your pool.

IMPORTANT: Trapped air in your vacuum system may prevent the pump from operating correctly. In this case, if your pump has a release valve, open it to let air escape until only water comes out from it and then close the valve. Check pump manual how to remove the air.

HOW TO EMPTY THE PRE-FILTER BAG OF SKOOBA™

WARNING! Turn off the pump before emptying the pre-filter bag.

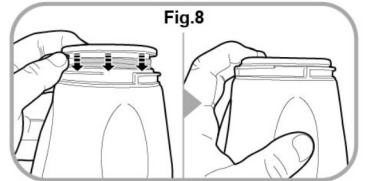
1. Remove the hood from the cleaner by turning it anticlockwise until it stops and then take it off from the main body. (Fig.6)



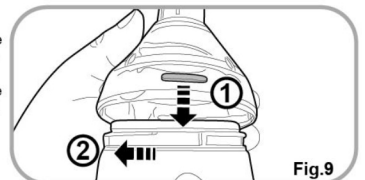
2. Pull out the pre-filter bag from the cleaner and remove the leaves and other debris. (Fig.7) Rinse the cover and make sure its suction hole is not clogged.



3. Put back the pre-filter bag into the cleaner. Make sure the notch under the top ring covers the edge around the opening of the cleaner. (Fig.8) If pre-filter bag is damaged, replace a new one before next operation.



4. Align the rid (on the inside surface of hood bottom) to the slot on the opening of the main body, press down the hood and turn it clockwise until it stops. Make sure the hood is secured on the cleaner before next operation. (Fig.9)



TROUBLE SHOOTING

Problem	Possible Cause	Solution
Poor debris pick-up.	Pre-filter bag is full.	Clean the pre-filter bag.
	Not enough suction power.	Make sure that your pool pump power is at least 45W, and minimum system flow rate is 2.0m³/hr (530 gal/hr). Make sure the hose is free of punctures.
	Obstruction somewhere in the system.	Clean the pump filter. Clean out any debris from the hose. Replace a damaged pre-filter bag that lets debris through.
	Suction nozzle is blocked.	Check and clean out any debris from the nozzle.

K535
Made in China

© 2013 Kokido Development Ltd.
All rights reserved. No part of this document may be reproduced or transmitted in any form or by any means, electronic, mechanical, photocopying, recording, or otherwise, without prior written permission of Kokido Development Ltd.

KOKIDO®
Pool Product Innovations