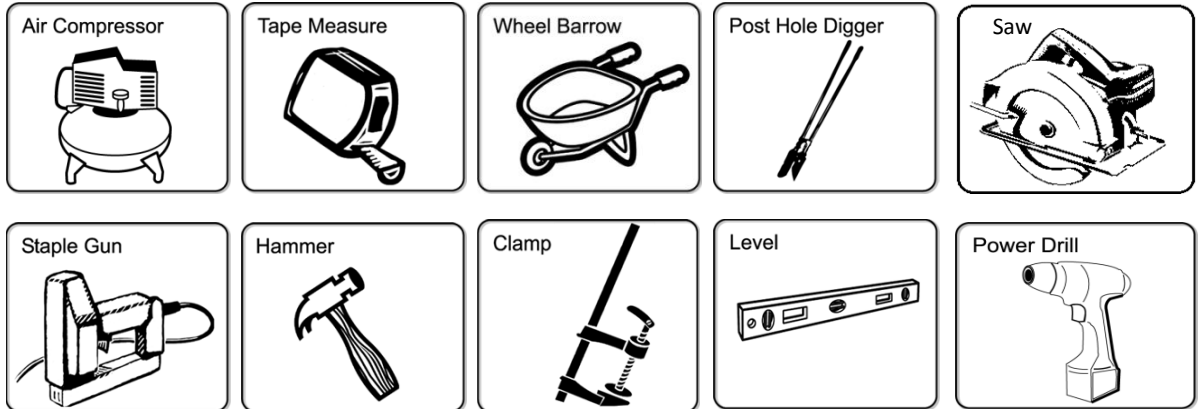
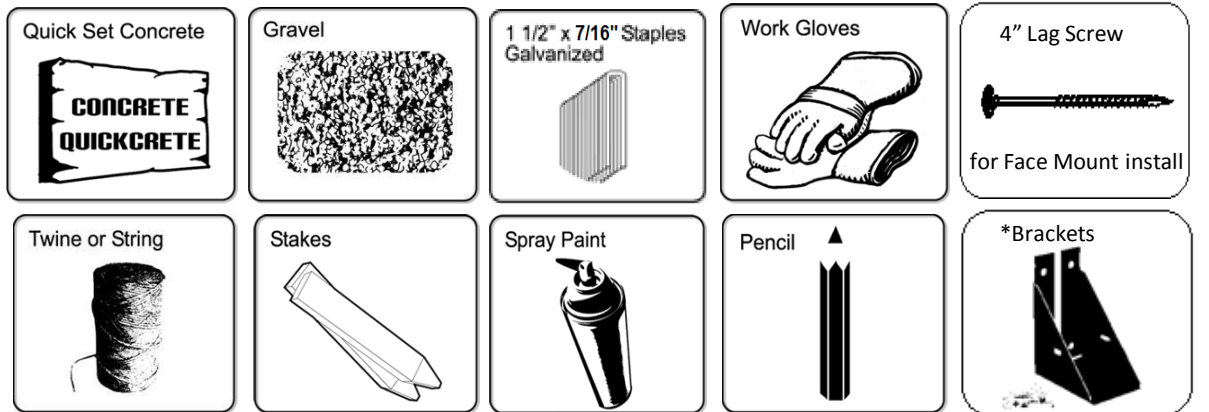


Composite Fencing Installation Instructions FOR SQUARE TOP PICKET INSTALL

Tools Needed:



Supplies:



*for Side Mount install

Prior to installing fencing:

- ✓ Prior to digging, confirm location of underground utilities with local authorities.
- ✓ Apply for permits if required by local authorities and codes.
- ✓ Local zoning laws, neighborhood associations and/or historic districts may regulate size, type, placement and ability of fencing. Ensure compliance prior to installation.
- ✓ **Due to variation in picket width, minor adjustments to gapping may be required. Care should be taken to ensure that spacing does not result in too large of gap at the end posts**

1. Planning:

- ✓ Determine total area to be fenced.
- ✓ Site-Built installation: Ensure the right amount of pickets and rails per section.
- ✓ Make adjustments for odd widths at the back corners or build partial sections equally. Example: if you have 8 feet left in a run, consider building two 4ft sections rather than a 6ft and a 2ft.
- ✓ Determine the number of posts including gate post & gate location (if applicable).
- ✓ Installations are facilitated with the use of an air compressor or air driven staple gun. Recommended fasteners are 7/16" crown x 1 1/2" galvanized or stainless steel staples, minimum 18ga.

2. Layout (See diagram below)

2A. Establish total area to be fenced. Insert stakes 6" inside of proposed area extending an additional 3' laterally so as not to disturb string lines when digging post holes.

2B. Attach string line to staked area. Verify corners are square using the 3' x 4' x 5' method.

2C. Fence corners are determined by where strings intersect.

2D. Mark locations for subsequent posts starting with the first location and measuring the appropriate distance determined by install method.

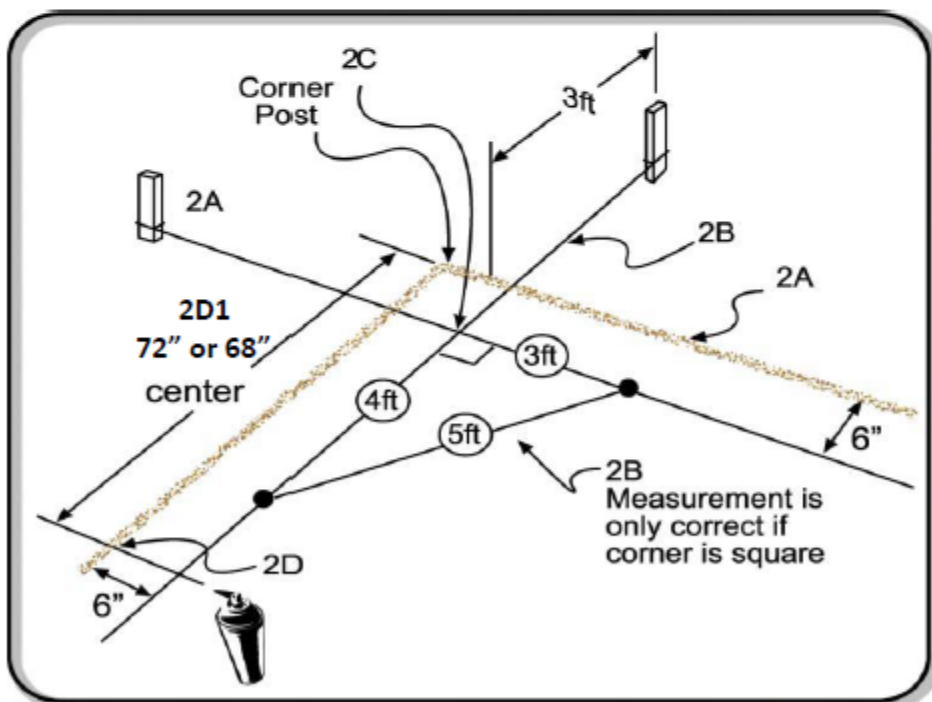
2D1. **Bracket Side Mount – 72" post center to post center**

Face Mount – 68" post center to post center

✓ Mark gate location and size. **Minimum 44" inside posts when using Adjustable Gate Frame.**

✓ Place proper post at each location.

Tip: When marking measurements with spray paint, mark both the ground *and* string (see illustration).



For questions or more information please visit
www.fiberonfencing.com

1st CHOOSE
Bracket Mount
 OR
Face Mount

FACE MOUNT

INSTALL INSTRUCTIONS BELOW

Line posts = 68" Post Center - Post Center

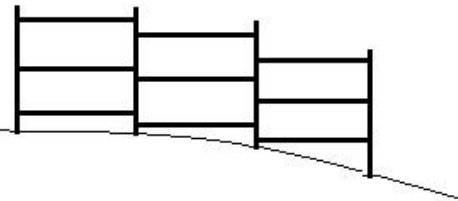
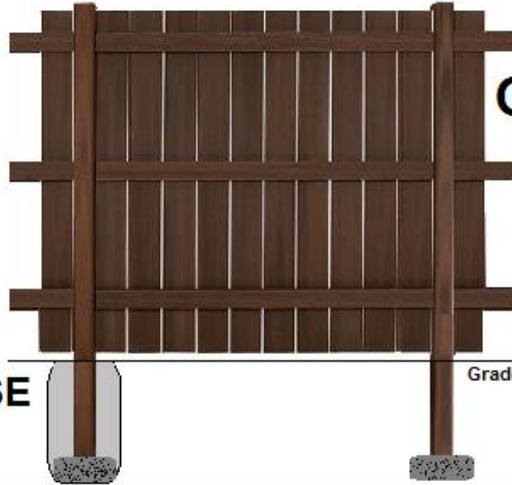


www.FibronFencing.com

B: CROSS RAILS

C: PICKETS

A: ALL PURPOSE POSTS



* For sloping: step rails down

A POSTS



1 Dig Hole :
 Dig hole 12" wide x 30" deep



2 Add Gravel :
 Add 6" gravel (depth now = 24")



3 Set Post :
 Set post + 120 lbs of Quikrete

4 Set Next Post . Note: Post distance varies based on line, end, corner. See B2 below or page 7, 9, 11

B CROSS RAILS

Rail & Bracket Locator Template

1 Use Locator :

Predrill holes into rails centered 1" from each rail end with 1/2" drill bit. Align rail locator with post. Mark post for each rail location. Leave a 1/4" gap between rail ends. Attach with 3.5 - 4" ceramic or zinc coated lag screws. Touch tightened. **NO NAILS**



2 For a Corner :

Either overlap the rail ends OR cut rail ends to 45° angles



SQUARE TOP PICKETS



FACE MOUNT

INSTALL INSTRUCTIONS BELOW



See page 9



Spread pickets evenly across both sides of rail

- 1** Pickets: 1" down from post top
- 2** Pickets: 2" up from ground
- 3** Staples: 1 1/2" Galvanized or Stainless Steel
- 4** Staples: 4 staples per picket & rail crossing

* Cover rail seam with picket

Shadow Box



See page 11



Spread pickets evenly overlapping on 1 side of rail

- 1** Pickets: 1" down from post top
- 2** Pickets: 2" up from ground
- 3** Staples: 1 1/2" Galvanized or Stainless Steel
- 4** Staples: 4 staples per picket & rail crossing

* Cover rail seam with picket

Board on Board



See page 7

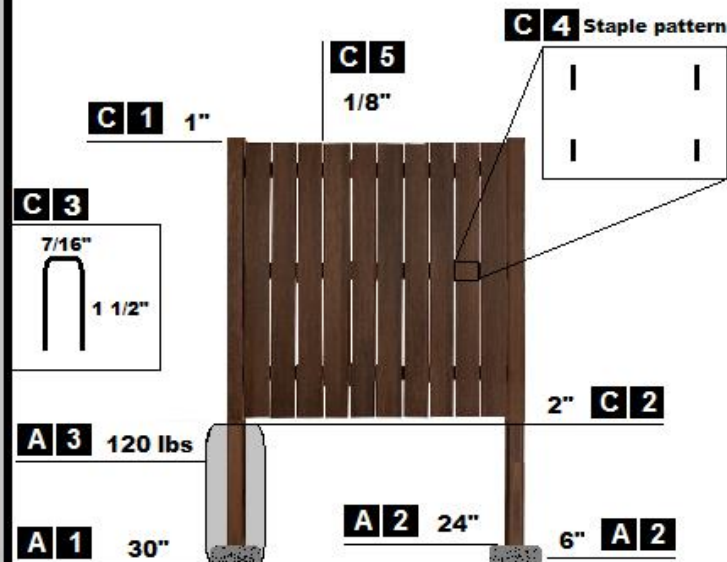


1/8" spacing between pickets

- 1** Pickets: 1" down from post top
- 2** Pickets: 2" up from ground
- 3** Staples: 1 1/2" Galvanized or Stainless Steel
- 4** Staples: 4 staples per picket & rail crossing

* Cover rail seam with picket

Traditional

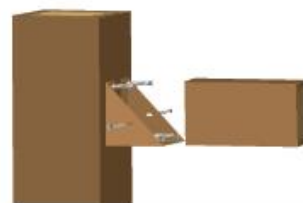


1st CHOOSE
Bracket Mount
OR
Face Mount

BRACKET MOUNT

INSTALL INSTRUCTIONS BELOW

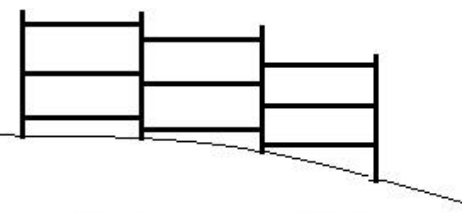
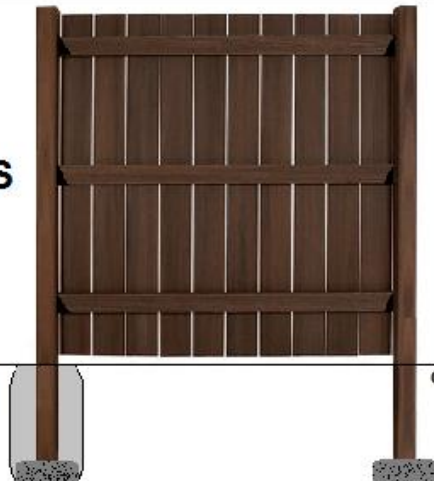
72" Post Center - Post Center



B: CROSS RAILS

C: PICKETS

A: ALL PURPOSE POSTS



* For sloping: step brackets down

A POSTS



1 Dig Hole :
Dig hole 12" wide x 30" deep



2 Add Gravel :
Add 6" gravel (depth now = 24")



3 Set Post :
Set post + 120 lbs of Quikrete

4 Next Post : Set next post 72" on center post - post

B CROSS RAILS



1 Use Locator :
Place rail & bracket locator template square against post. Slide brackets into location. Attach with provided screws.



2 Add Cross Rails :
Slide cross rails into brackets, attach with provided screws



SQUARE TOP PICKETS



BRACKET MOUNT

INSTALL INSTRUCTIONS BELOW

See page 10



6 pickets on front / 6 pickets on back

- 1** Pickets: 1" down from post top
- 2** Pickets: 2" up from ground
- 3** Staples: 1 1/2" Galvanized or Stainless Steel
- 4** Staples: 4 staples per picket & rail crossing

Shadow Box



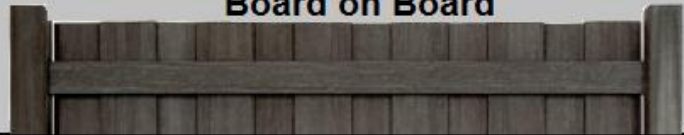
See page 12



7 pickets in / 6 pickets out

- 1** Pickets: 1" down from post top
- 2** Pickets: 2" up from ground
- 3** Staples: 1 1/2" Galvanized or Stainless Steel
- 4** Staples: 4 staples per picket & rail crossing

Board on Board



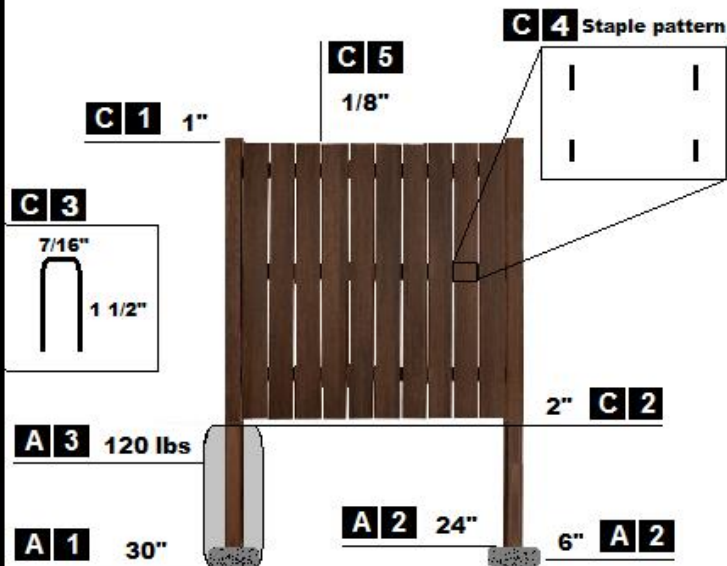
See page 8



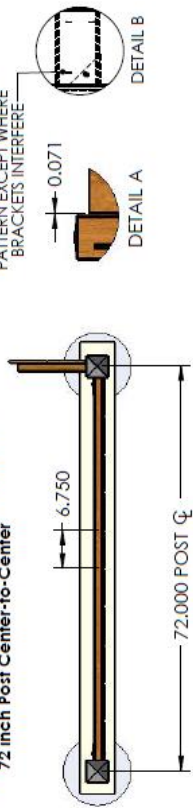
10 pickets on 1 side of cross rails

- 1** Pickets: 1" down from post top
- 2** Pickets: 2" up from ground
- 3** Staples: 1 1/2" Galvanized or Stainless Steel
- 4** Staples: 4 staples per picket & rail crossing
- 5** 1/8" spacing between pickets

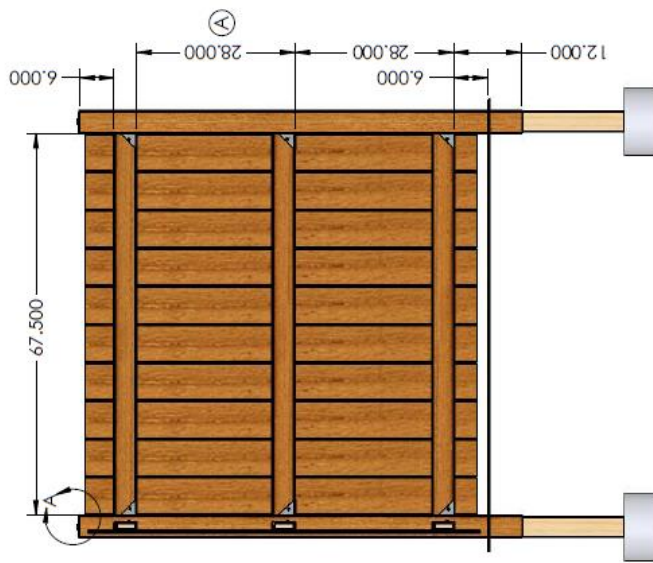
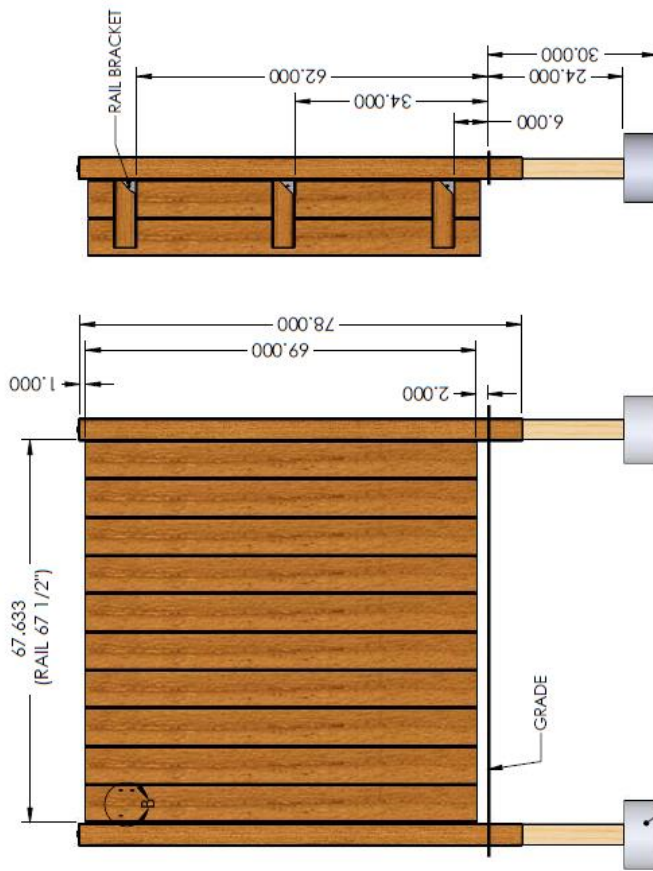
Traditional



**6 5/8" Traditional Square Top Bracket Mount
72 inch Post Center-to-Center**



NOTE: SECURE USING "BOX" PATTERN EXCEPT WHERE BRACKETS INTERFERE



REVISIONS

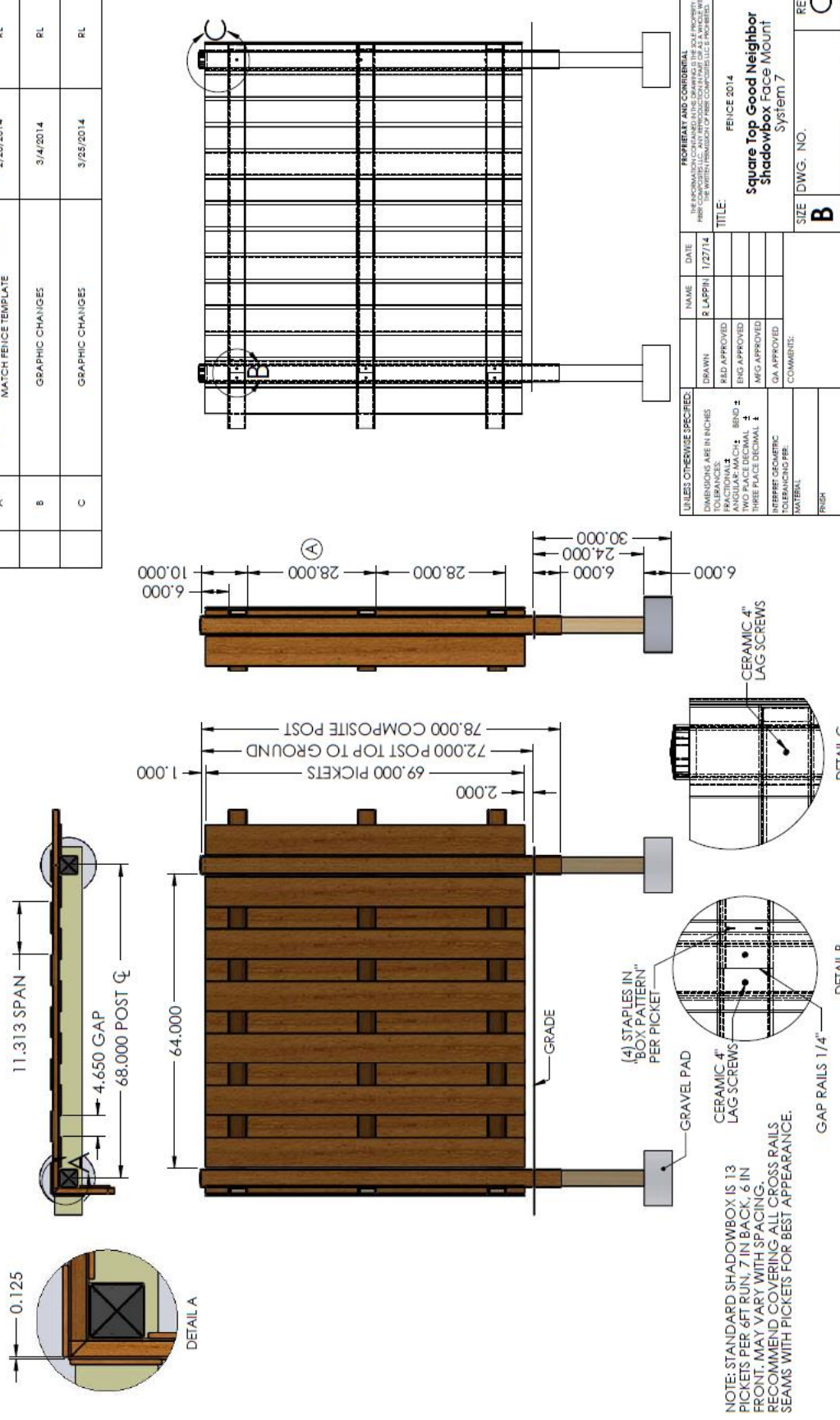
ZONE	REV.	DESCRIPTION	DATE	APPROVED
	A	CORRECTED RAIL LOCATIONS TO MATCH INSTALLATION TEMPLATE	2/28/2014	RL
	B	GRAPHIC CHANGES	3/20/2014	RL
	C	GRAPHIC CHANGES	3/25/2014	RL

UNLESS OTHERWISE SPECIFIED:		PROPERTY AND COPYRIGHT	
DIMENSIONS ARE IN INCHES		THE INFORMATION CONTAINED IN THIS DRAWING IS THE SOLE PROPERTY OF	
TOLERANCES:		THE WRITER/ENGINEER/ARCHITECT/DESIGNER/CONTRACTOR (AS APPLICABLE)	
FINISHES:	AS SHOWN	NAME:	R. LAPPIN
ANGULARS:	AS SHOWN	DATE:	1/14/14
BENDS:	AS SHOWN	DRAWN:	
THREE PLACE DECIMAL:	±	RED APPROVED:	
TWO PLACE DECIMAL:	±	ENG APPROVED:	
ONE PLACE DECIMAL:	±	MFG APPROVED:	
NEAREST GEOMETRIC TOLERANCE PER:	AS APPROVED	COMMENTS:	
MATERIAL:			
FINISH:			
DO NOT SCALE DRAWING			

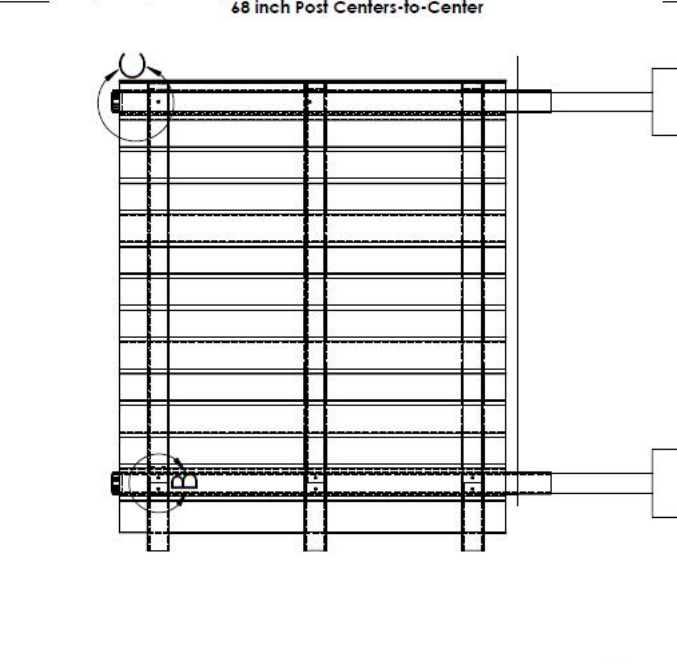
TITLE:		REVISIONS	
Traditional Square Top Bracket Mount SYSTEM 4		REV	C
SIZE	DWG. NO.	SCALE	VARIABLE
		DATE	
		PROJECT	
		SHEET	1 OF 1

NOTE: MAY VARY WITH ACTUAL SPACING DIMENSIONS.

6 5/8" Square Top Good Neighbor Shadowbox Face Mount
68 inch Post Centers-to-Center



REVISIONS				
ZONE	REV.	DESCRIPTION	DATE	APPROVED
	A	CHANGED SPACING BETWEEN BACKER RAILS TO MATCH FENCE TEMPLATE	2/28/2014	RL
	B	GRAPHIC CHANGES	3/4/2014	RL
	C	GRAPHIC CHANGES	3/05/2014	RL



UNLESS OTHERWISE SPECIFIED:		NAME	DATE
DIMENSIONS ARE IN INCHES		B LAPPIN	1/27/14
TOLERANCES			
FRACTIONAL 1/8			
ANGULAR MATCH: BEND 2			
THREE PLACE DECIMAL 1			
INTERFERE GEOMETRIC			
UNLESS NOTED PRE			
MATERIAL:			
RISK:			

PROPERTY AND CONFIDENTIAL
THE INFORMATION CONTAINED HEREIN IS THE PROPERTY OF
HERRING CORP. ANY REPRODUCTION IN WHOLE OR IN PART WITHOUT
THE WRITTEN PERMISSION OF HERRING CORP. IS PROHIBITED.

TITLE:
FENCE 2014
Square Top Good Neighbor Shadowbox Face Mount
System 7

SIZE DWG. NO. **B** REV **C**

SCALE: VARIES WEIGHT: SHEET 1 OF 1

NOTE: STANDARD SHADOWBOX IS 13 PICKETS PER 4 FT RUN. 7 IN BACK. 6 IN FRONT. MAY VARY WITH SPACING. RECOMMEND COVERING ALL CROSS RAILS SEAMS WITH PICKETS FOR BEST APPEARANCE.

(4) STAPLES IN "BOX PATTERN" PER PICKET

GRAVEL PAD

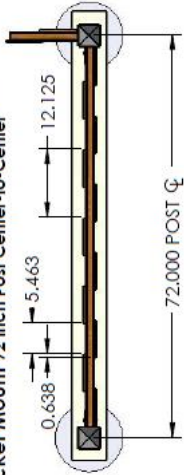
CERAMIC 4" LAG SCREWS

GAP RAILS 1/4"

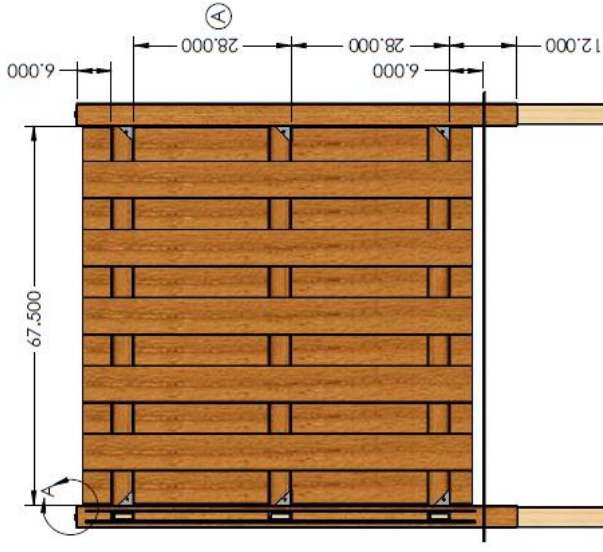
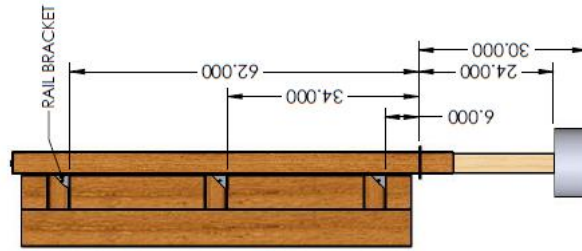
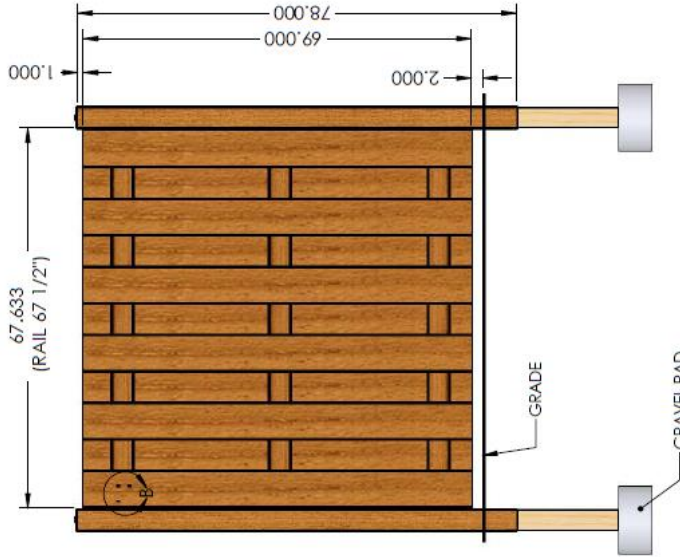
DETAIL B

DETAIL C

6 5/8" Square Top Good Neighbor Shadowbox Bracket Mount 72 inch Post Center-to-Center



NOTE: SECURE USING "BOX" PATTERN EXCEPT WHERE BRACKETS INTERFERE



REVISIONS

ZONE	REV.	DESCRIPTION	DATE	APPROVED
	A	CORRECTED RAIL LOCATIONS TO MATCH INSTALLATION TEMPLATE	2/25/2014	RL
	B	GRAPHIC CHANGES	3/20/2014	RL
	C	GRAPHIC CHANGES	3/25/2014	RL

UNLESS OTHERWISE SPECIFIED:		PROPERTY AND CONFIDENTIAL	
DIMENSIONS ARE IN INCHES	DATE	NAME	11/14/14
TOLERANCES:	DRAWN	R. LAPPIN	
FRACTIONAL: 1/16	FIELD APPROVED		
ANGULAR: MATCH	ENG APPROVED		
DECIMAL: 1/100	MEG APPROVED		
THREE PLACE DECIMAL: 1/1000	Q.A. APPROVED		
REFER GEOMETRIC CONSTRUCTION MATERIAL	COMMENTS:		
FINISH:			
DO NOT SCALE DRAWING			

TITLE: **Square Top Good Neighbor Shadowbox Bracket Mount SYSTEM 8**

FEIUCE 2014

SIZE DWG. NO. **B**

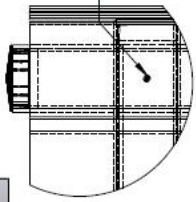
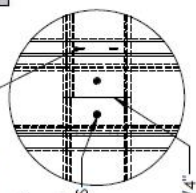
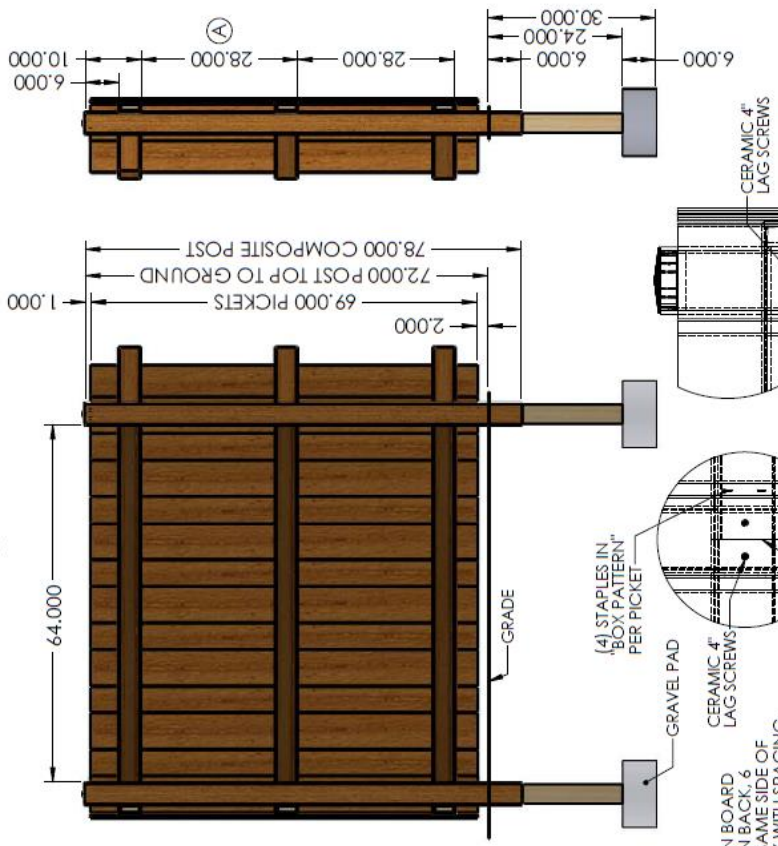
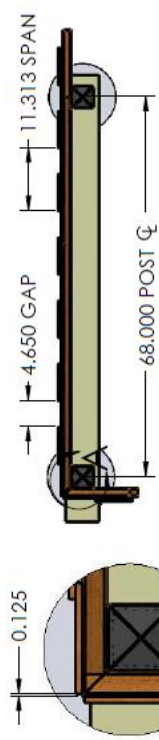
REV **C**

SCALE: VARIES THROUGH SHEET 1 OF 1

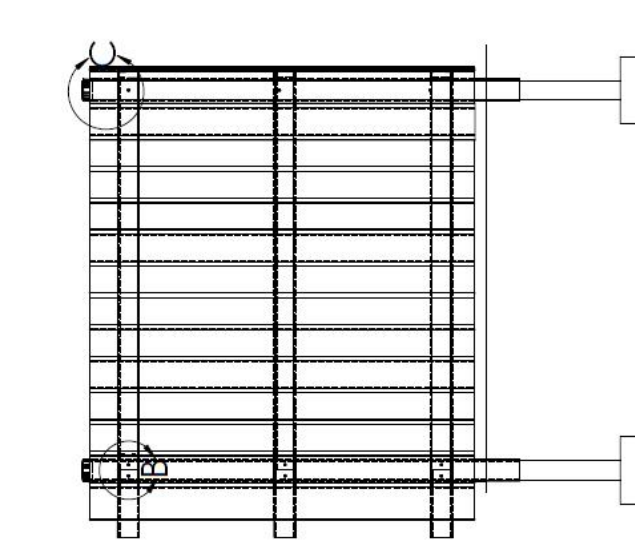
NOTE: STANDARD SHADOWBOX IS 13 PICKETS PER SECTION, 7 IN THE BACK ROW, 6 IN THE FRONT. MAY VARY WITH SPACING. TO TIGHTEN VIEW, ADD PICKETS AS DESIRED.

6 5/8" Square Top Board on Board Face Mount
Privacy 68 inch Post Centers-to-Center

6 5/8" Square Top Board on Board Face Mount
Privacy 68 inch Post Centers-to-Center



REVISIONS				
ZONE	REV.	DESCRIPTION	DATE	APPROVED
	A	CHANGED SPACING BETWEEN BACKER BAILS TO MATCH FENCE TEMPLATE	2/28/2014	RL
	B	GRAPHIC CHANGES	3/4/2014	RL
	C	GRAPHIC CHANGES	3/25/2014	RL



UNLESS OTHERWISE SPECIFIED:
DIMENSIONS ARE IN INCHES
FRACTIONAL 1/4" & 3/8" 1/8"
TWO PLACE DECIMAL 1/16"
THREE PLACE DECIMAL 1/32"
NEAREST CONFORMING TOLERANCING PER MATERIAL FINISH
DO NOT SCALE DRAWING

DATE: 1/27/14
NAME: R LAPPIN
DRAWN: R LAPPIN
RED APPROVED:
MFG APPROVED:
QA APPROVED:

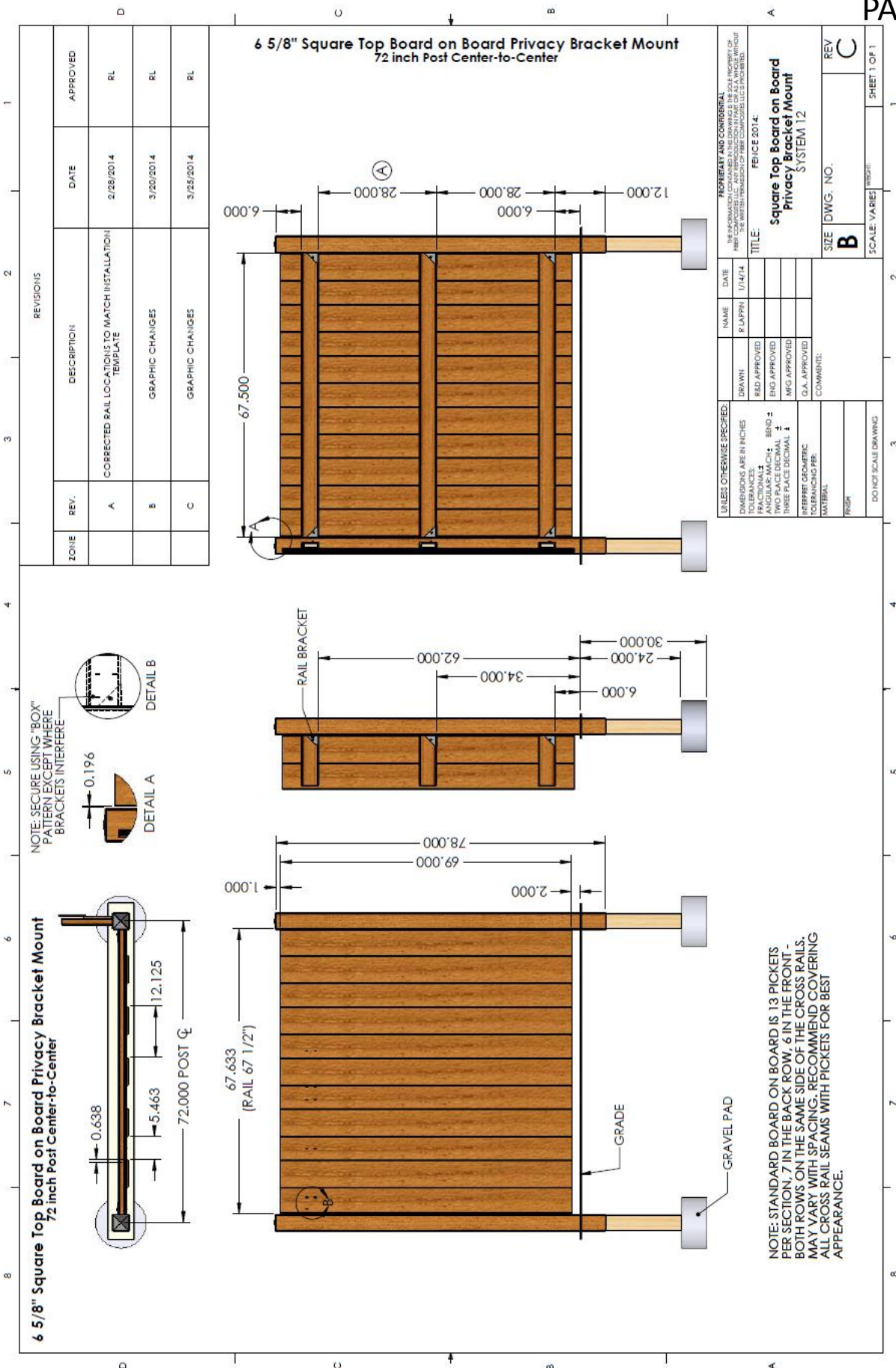
COMMENTS:

PROPERTY AND COPYRIGHT:
THE INFORMATION CONTAINED IN THIS DRAWING IS THE SOLE PROPERTY OF FENCE SYSTEMS, INC. ANY REUSE OR REPRODUCTION OF THIS DRAWING WITHOUT THE WRITTEN CONSENT OF FENCE SYSTEMS, INC. IS PROHIBITED.

TITLE: FENCE 2014
System 11
Square Top Board on Board Privacy Face Mount

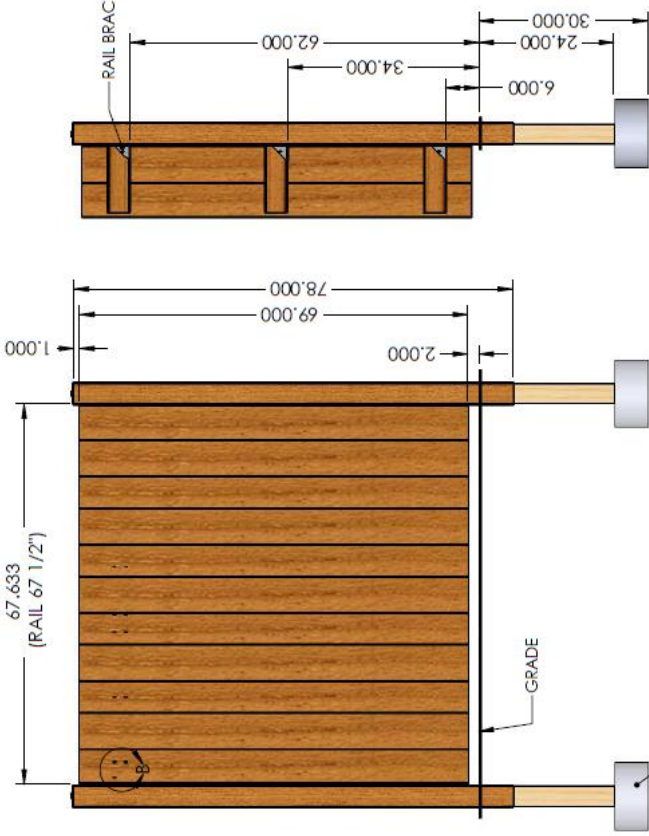
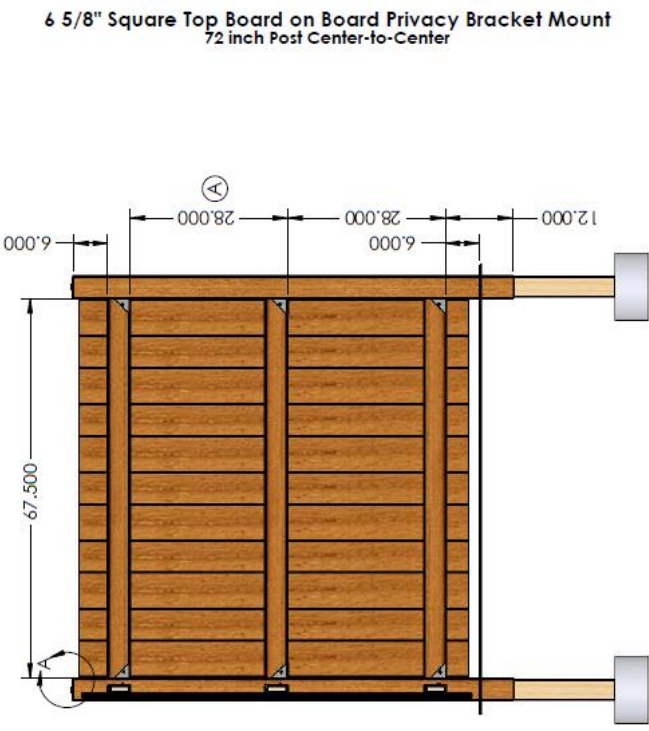
SIZE: DWG. NO. **B**
REV: **C**
SCALE: VARIES
WEIGHT: SHEET 1 OF 1

NOTE: STANDARD BOARD ON BOARD IS 13 PICKET PER 6 FT RUN, 7 IN BACK. 6 IN FRONT - BOTH ROWS ON SAME SIDE OF THE CROSS RAILS. MAY VARY WITH SPACING. RECOMMEND COVERING ALL CROSS RAILS WITH PICKETS FOR BEST APPEARANCE.



6 5/8" Square Top Board on Board Privacy Bracket Mount
72 inch Post Center-to-Center

NOTE: SECURE USING "BOX" PATTERN EXCEPT WHERE BRACKETS INTERFERE



NOTE: STANDARD BOARD ON BOARD IS 13 PICKETS PER SECTION, 7 IN THE BACK ROW, 6 IN THE FRONT - BOTH ROWS ON THE SAME SIDE OF THE CROSS RAILS. MAY VARY WITH SPACING. RECOMMEND COVERING ALL CROSS RAIL SEAMS WITH PICKETS FOR BEST APPEARANCE.

REVISIONS				
ZONE	REV.	DESCRIPTION	DATE	APPROVED
	A	CORRECTED RAIL LOCATIONS TO MATCH INSTALLATION TEMPLATE	2/28/2014	RL
	B	GRAPHIC CHANGES	3/20/2014	RL
	C	GRAPHIC CHANGES	3/25/2014	RL

UNLESS OTHERWISE SPECIFIED:		PROFESSIONAL AND COMMERCIAL	
DIMENSIONS ARE IN INCHES	DRAWN	NAME	DATE
TOLERANCES:	READ APPROVED	R. LAPPIN	1/14/14
ANGULAR: MACH 24	END APPROVED		
TWO PLACE DECIMAL	MFG APPROVED		
THREE PLACE DECIMAL	O.A. APPROVED		
INTERPRET GEOMETRIC TOLERANCING PER MATERIAL	COMMENTS:		
FINISH			
DO NOT SCALE DRAWING			
TITLE:		FENCE 2014:	
Square Top Board on Board Privacy Bracket Mount SYSTEM 12		REV C	
SIZE DWG. NO. B		SHEET 1 OF 1	
SCALE: VARIES		WEIGHT:	