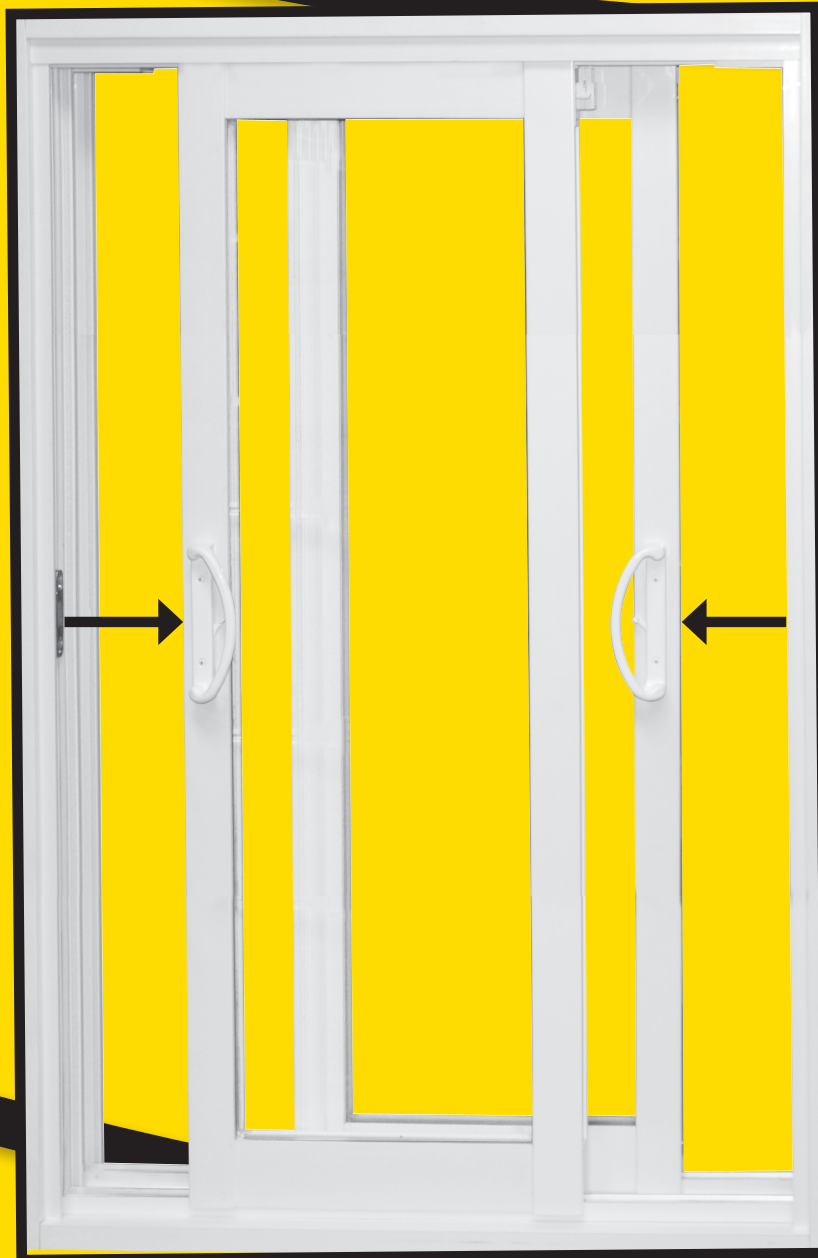


STANLEY

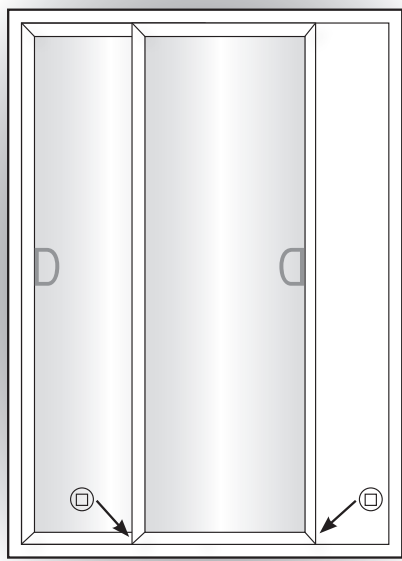
®

Double Sliding Patio Door

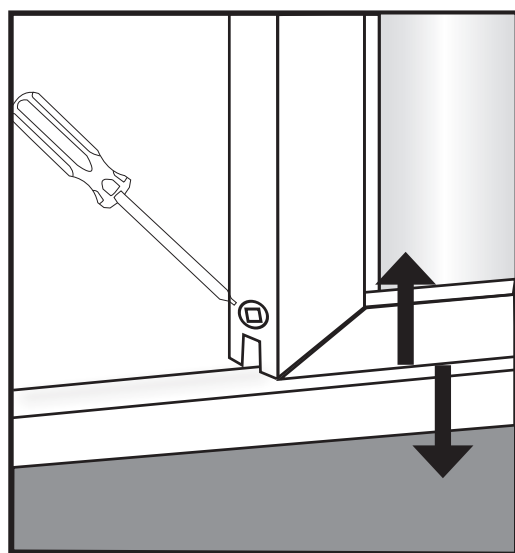


Made in Canada

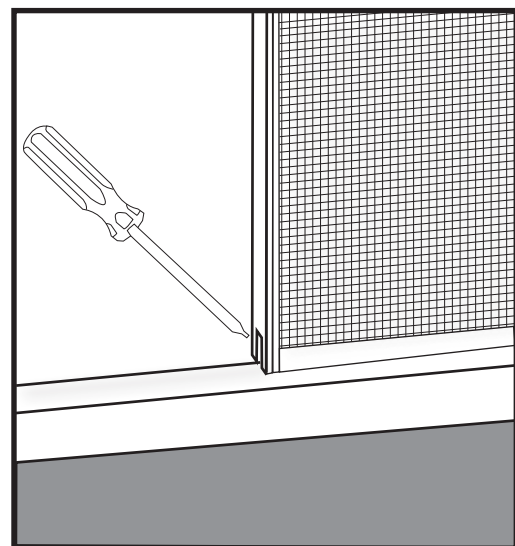
INSTALLATION INSTRUCTIONS



Adjust the operating panel with the screw at each end.



Raise or lower the operating panel using a square head screwdriver for both sides.



Adjust the door screen using a square head screwdriver for both sides, top and bottom.



To attach mortise handle

INSTALLATION

1. The dimension of the opening must exceed the exterior dimension of the door frame by 32 mm (1 1/4") in width and by 32 mm (1 1/4") in height.
2. When installing, this product must be squared and levelled.
3. Wedge the frame (see sketch) with 3 wedges between the structure, the sill and the jambs, and one at the head.
4. Make sure the head, sill and jambs are straight.
5. Fill the space between the door frame and the structure with insulation material. Be careful, as excessive insulation material may warp the frame.
6. Seal the interior and exterior perimeter of the door with caulking.

MAINTENANCE

1. Do not paint the vinyl or hardware as this will impair the door from functioning properly and will void the guarantee.
2. Clean the vinyl with a soft cloth and soap. All abrasive products will damage the surface finish.

For your comfort, and to prevent condensation, experts recommend these humidity values:

Outside Temperature	Indoor Maximum Relative Humidity
-7C	35%
-12C	30%
-18C	25%
-23C	20%
-29C	15%

