



4 & 6" CYCLONIC DIRECT DRIVE WOOD CHIPPERS

OPC504/OPC506

DESCRIPTION

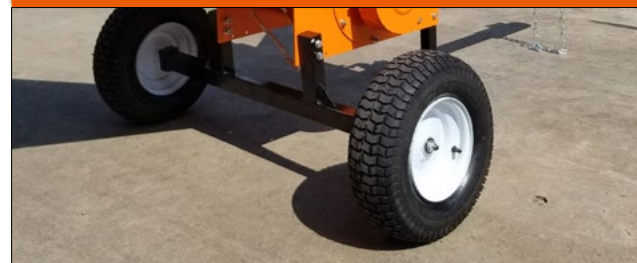
3600 Rpm Cyclonic Chippers. Direct Drive, Dual Swing Chutes for quick drum access.

Available in 4 and 6 inch chipping capacities, reversible dual edge high speed cutting blades. Auto Adjusting Cyclonic drum chamber deteriorates trees and brush up to 6 inches in diameter all from one feed chute. Large quick open hopper, truck bed height chip chute with adjustable cast iron rotating hood, easy drop stand, removable tow bar, 2 inch hitch.

Premium built-in tool box, Key shutoff with lock out safety switch. Extended 48 inch safety stability axle with DOT tires. Safety kit includes, tools, glasses, ear protection and gloves. Integrated chute handles, powder coated for durability.

SPECIFICATIONS

Part Number:	OPC504 (4") / OPC506 (6")
Engine Model	Kohler
Engine	9.5 OR 14 HP Command Pro Commercial
Rated Power[Kw(Hp)]	9.5 Hp – 4 In Chipper / 14 Hp – 6 In Chipper
Rated Speed(Rpm)	3600
Tires	Dot 45 Mph
Wheelbase	47"
Tree Diameter	8"
Cutting Blades	Dual Reversible Double Edge Swords
Shredder	Auto Adjusting 6In To 1/8 In Materials
Gearbox	Dual Direct Drive
Expulsion Chute	Adjustable 180 Degrees – Pickup Bed Height
Assembled Dimensions	102 x 47 x 59"
Weight	375 Lbs
Shipping Crate Dimensions	44 x 25 x 44" 452 Lbs
Container Qty	72



45Mph Dot Tires



2 inch removable tow bar



Extended Axle – Dual Swing Chutes



Lock Out Keys