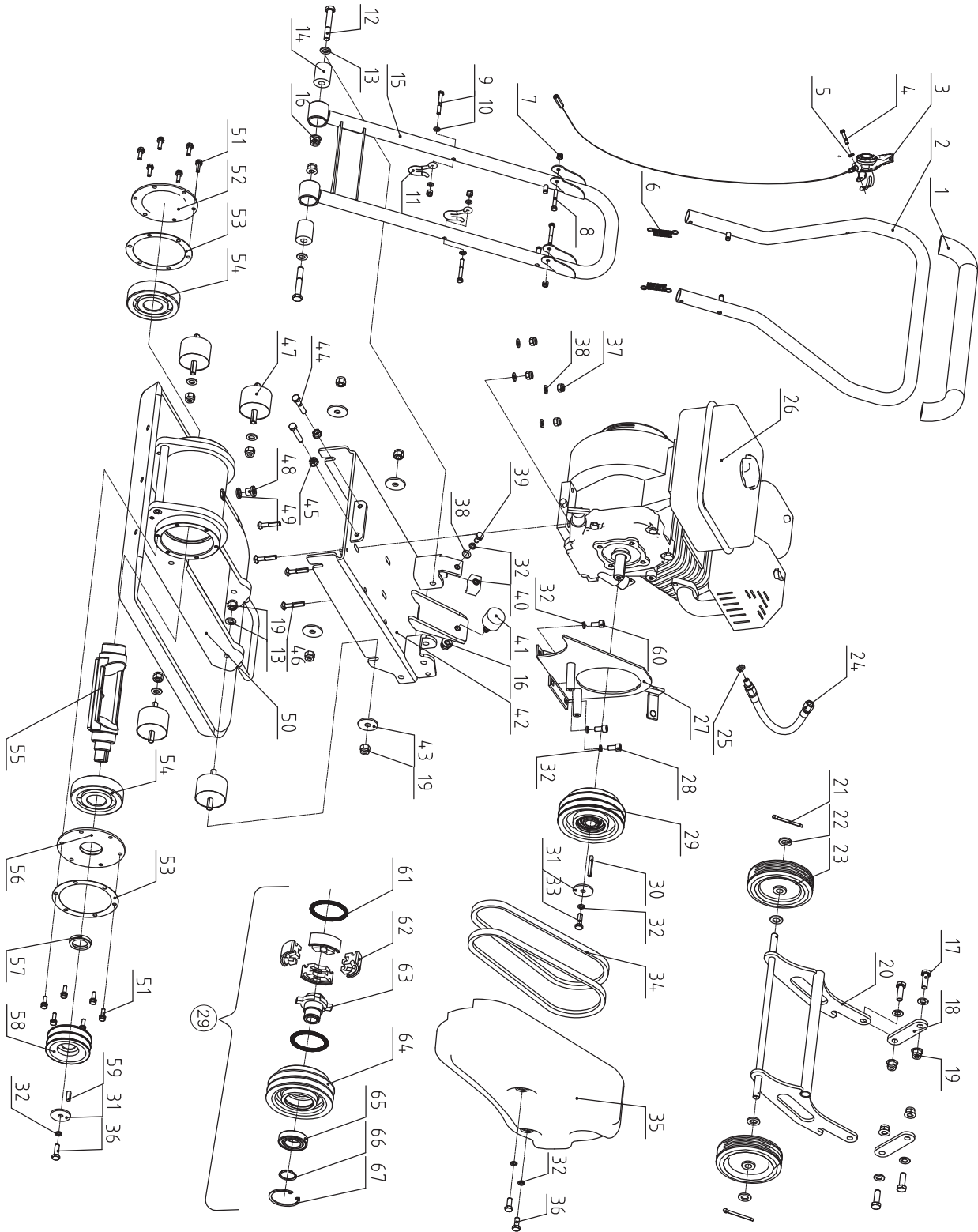


# PARTS DIAGRAM

YC1160

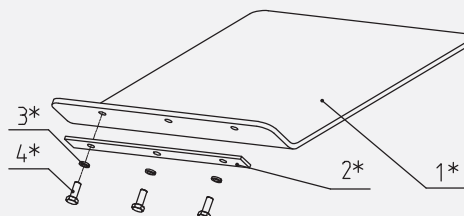


## YC1160 PARTS LIST

No.	Description	QTY.
1	Grip	1
2	Upper Handle	1
3	Throttle Control	1
4	Screw M5×35	1
5	Flat Washer 5	1
6	Spring	2
7	Lock Nut M6	4
8	Bolt M6×40	2
9	Bolt M6×50	2
10	Flat Washer 6	4
11	Wheel Kit Pothook	2
12	Bolt M10×70	2
13	Flat Washer 10	10
14	Rubber Sleeve	2
15	Lower Handle Weldment	1
16	Nut M10	3
17	Bolt M10×30	4
18	Link Plate	2
19	Nut M10	12
20	Wheel Bracket	1
21	Pin 2.5×25	2
22	Flat Washer 12	4
23	Wheel	2
24	Oil Drain Pipe	1
25	Washer 10	1
26	Engine	1
27	Belt Guard Bracket	1
28	Bolt M8×20	2
29	Centrifugal Clutch	1
30	Key 5×5×35	1
31	Small Pulley Plate	2
32	Lock Washer 8	8
33	Bolt M8×25 w/glue	1
34	V-Belt	2
35	Belt Guard	1
36	Bolt M8×20 w/glue	3
37	Nut M8	4
38	Flat Washer 8	5
39	Bolt M8×16	1
40	Limited Block	1

No.	Description	QTY.
41	Handle Shock Absorber	1
42	Engine Base	1
43	Washer 38×11×3	4
44	Bolt M8×45	2
45	Nut M8	2
46	Bolt M8×40	4
47	Shock Absorber	4
48	Plug	1
49	Washer 14	1
50	Base Plate	1
51	Bolt M6×20	12
52	Bearing Cover - Right	1
53	Housing Washer	2
54	Ball Bearing	2
55	Exciter Shaft	1
56	Bearing Cover - Left	1
57	Washer FB30×42×6F	1
58	Pulley	1
59	Key B6×18	1
60	Bolt M8×14	1
61	Spring	2
62	Clutch Lining	4
63	Clutch Pulley Hub	1
64	Clutch Pulley	1
65	Ball Bearing	1
66	Snap Ring	1
67	Circlip	1

## Optional Paving Pad Kit - YCP370



No.	Description	QTY.
1*	Paving Pad	1
2*	Clamp Plate	1
3*	Lock Washer 10	3
4*	Bolt M10×20	3