

LED HIGH BAY INSTALLATION INSTRUCTIONS



To prevent death, injury or damage to property, this product must be installed in accordance to National Electrical Code (NFPA70) in the US or Canadian Electrical Code (CSA 22.1) in Canada.

Risk of fire or electric shock. The electrical rating of these products are 120-277 Vac, the installer must determine whether they have 120-277 V at the luminaire before installation.

Risk of fire or electric shock. LED High Bay installation requires knowledge of luminaires electrical systems. If not qualified, do not attempt installation. Contact a qualified electrician.

To prevent wiring damage or abrasion, do not expose wiring to edges of sheet metal or other sharp objects.

Disconnect power before installing the product or servicing it.

Wait until fixture has cooled down before installing or servicing the fixture.

MIN. 90°C SUPPLY CONDUCTORS

What's In The Box

One (1) LED High Bay

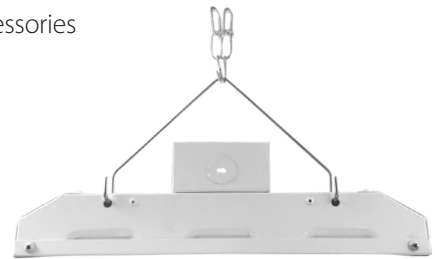


Tools Needed

This LED High Bay requires very few tools for installation. A screwdriver and a pair of wirecutters will help with installation.

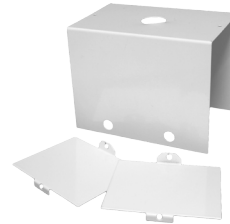


Included Accessories

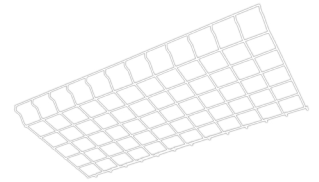


Chain Kit

Optional Accessories



Pendant Kit



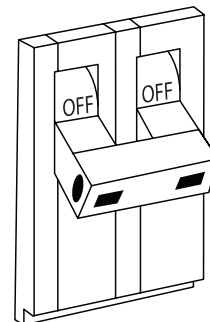
Wire Guard

Installing LED High Bay

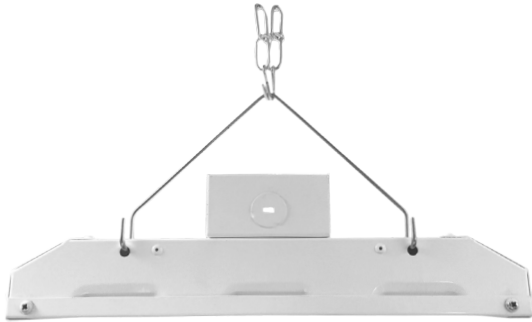
- 1 Carefully unpack the fixture from its packaging. Inspect product for defects due to shipping.



- 2 Turn off power to appropriate circuit at the breaker panel.

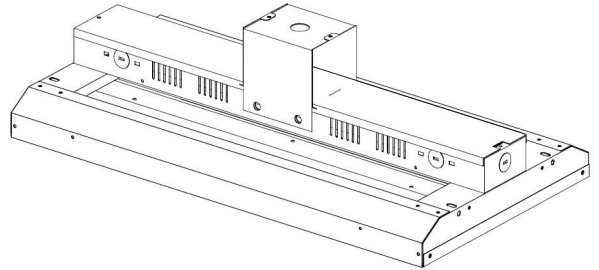


- 3a Attach the provided chain securely to the included wire hangers, then insert the wire hangers into the slotted holes, as shown below, located on top of both sides of the fixture.



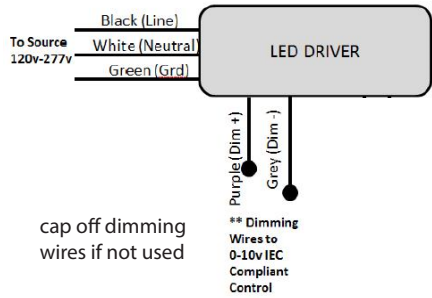
Chain Kit

- 3b Place pendant hanger on the fixture as shown below. Align screw holes and bolt the bracket to the fixture using the provided hardware.

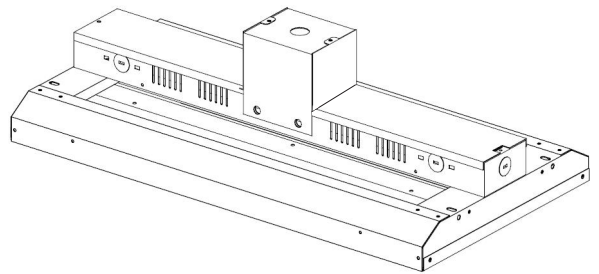


Wiring Diagram

Attach fixture to conduit securely and make wiring connections (see wiring instructions below).



- 4b Once the connections are made, attach both face plates to the mounting bracket using the provided hardware.



Pendant Kit