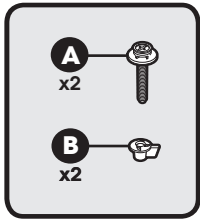
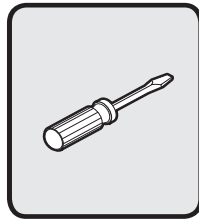


! Important / Importante / Important

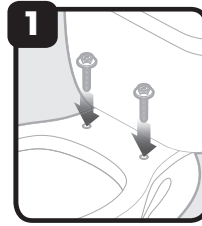
Installation Instructions / Instrucciones de Instalación / Instructions d'installation



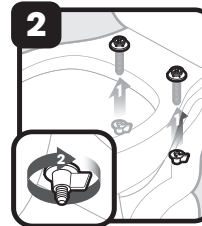
Hardware kit includes.
El kit de instalación incluye.
Le kit de matériel inclut.



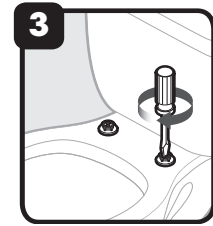
Tools required.
Herramientas requeridas.
Outils requis.



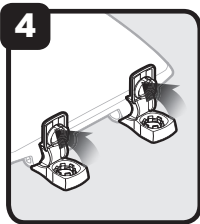
1
Insert bolts.
Inserte los pernos.
Insérer les boulons.



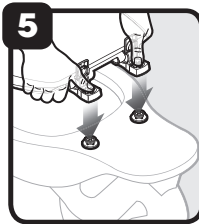
2
Attach nuts.
Coloque las tuercas.
Fixer les écrous.



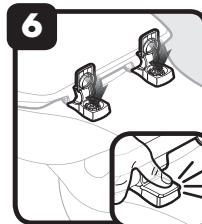
3
Tighten.
Ajuste.
Serrez.



4
Flip up hinge caps.
Levante cubierta de las bisagras.
Relever les couvercles de charnière.



5
Snap hinges onto bolts.
Inserte las bisagras en los pernos.
Enclencher les charnières sur les boulons.



6
Close hinge caps.
Cierre la cubierta de las bisagras.
Fermez les couvercles de charnières.

For additional assistance in the installation of your toilet seat, please visit our website or call Customer Service at 1-888-722-6488.

Para obtener ayuda adicional sobre la instalación de su asiento sanitario por favor visite nuestro sitio web o llame a Servicio al Cliente 1-888-722-6488.

Pour plus d'information concernant l'installation de votre W.C. veuillez consulter notre site internet ou composer le 1-888-722-6488 du Service à clientèle.

www.ToiletSeats.com/Installation

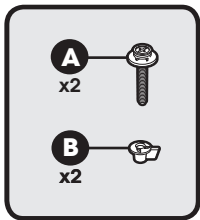


Do Not Stand On Cover
No Se Pare en la Tapa
Ne Pas Se Mettre Debout Sur le Siège

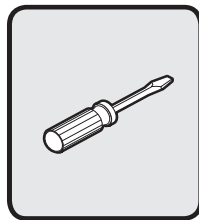
©2015 1B5997300

! Important / Importante / Important

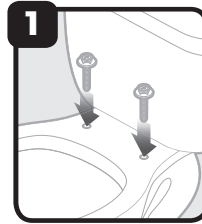
Installation Instructions / Instrucciones de Instalación / Instructions d'installation



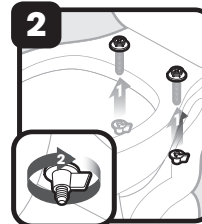
Hardware kit includes.
El kit de instalación incluye.
Le kit de matériel inclut.



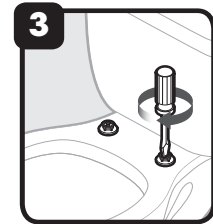
Tools required.
Herramientas requeridas.
Outils requis.



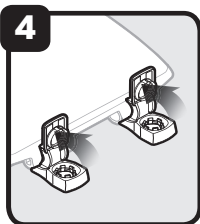
1
Insert bolts.
Inserte los pernos.
Insérer les boulons.



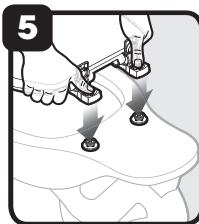
2
Attach nuts.
Coloque las tuercas.
Fixer les écrous.



3
Tighten.
Ajuste.
Serrez.



4
Flip up hinge caps.
Levante cubierta de las bisagras.
Relever les couvercles de charnière.



5
Snap hinges onto bolts.
Inserte las bisagras en los pernos.
Enclencher les charnières sur les boulons.



6
Close hinge caps.
Cierre la cubierta de las bisagras.
Fermez les couvercles de charnières.

For additional assistance in the installation of your toilet seat, please visit our website or call Customer Service at 1-888-722-6488.

Para obtener ayuda adicional sobre la instalación de su asiento sanitario por favor visite nuestro sitio web o llame a Servicio al Cliente 1-888-722-6488.

Pour plus d'information concernant l'installation de votre W.C. veuillez consulter notre site internet ou composer le 1-888-722-6488 du Service à clientèle.

www.ToiletSeats.com/Installation



Do Not Stand On Cover
No Se Pare en la Tapa
Ne Pas Se Mettre Debout Sur le Siège

©2015 1B5997300