

AIR GREASE GUN

40599

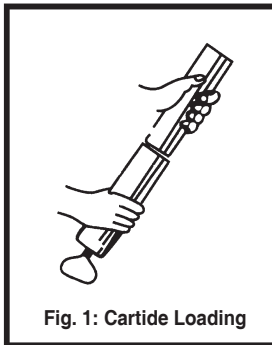


Fig. 1: Cartridge Loading

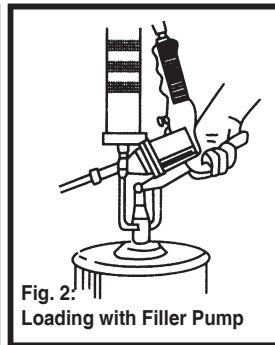


Fig. 2:
Loading with Filler Pump

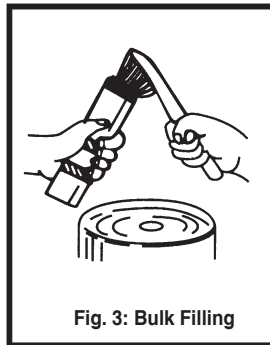


Fig. 3: Bulk Filling

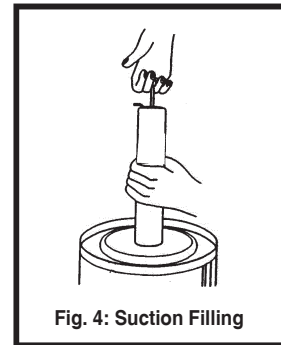


Fig. 4: Suction Filling

INSTRUCTIONS FOR THE 4-WAY LOADING

CARTRIDGE LOADING (See Fig. 1)

- (a) Remove the gun head from the container tube.
- (b) Draw back the plunger handle entirely.
- (c) Insert open end of cartridge into container tube and push all the way in. Remove the seal or pull tab end from the cartridge.
- (d) Reassemble the gun head to the container tube. Press the locking plate and release the piston rod. Pull down the plunger handle.

LOADING WITH FILLER PUMP (See Fig. 2)

- (a) Draw back the plunger handle entirely.
- (b) Insert filler plug into the filler pump socket. Make sure plug is the type that fits the socket.
- (c) Operate the filler pump to fill the container tube.
- (d) Disconnect the grease gun from the filler pump.
- (e) Press the locking plate and release the piston rod. Pull down the plunger handle.

BULK FILLING (See Fig. 3)

- (a) Remove the gun head from the container tube.
- (b) Draw back the plunger handle entirely. Fill bulk grease into empty container tube.
- (c) Reassemble the gun head to the container tube. Press the locking plate and release the piston rod. Pull down the plunger handle.

SUCTION FILLING (See Fig. 4)

1. Remove the Tube from the top of the Front Housing
2. Submerge the open end of the Tube approximately 2 inches into the grease container (not included).
3. Slowly, pull back and fully extend the Handle to draw grease upward into the Tube. When the Handle is fully extended, lock it into place with the Locking Plate.
4. Carefully, reassemble the Tube to the top on the Head. Press the Locking Plate and release the Handle. Press the Handle in as far as it will go.

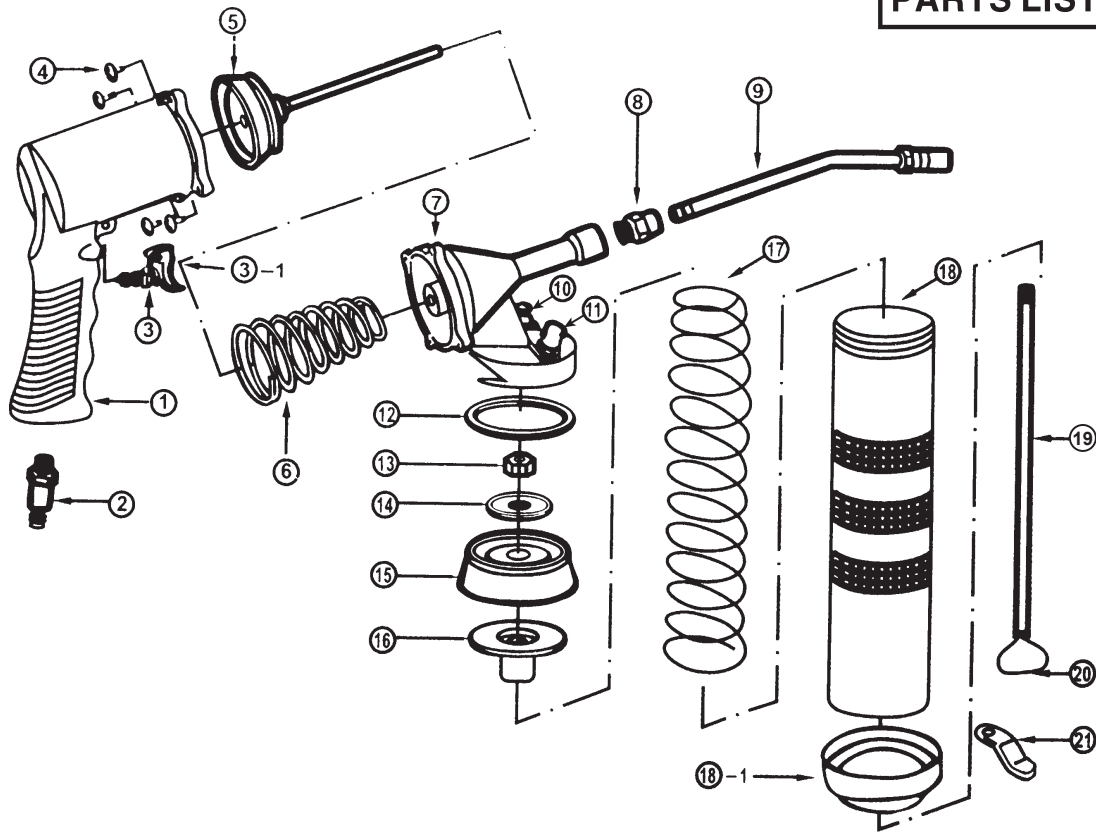
• If your gun fails to work, it is due to air pockets in the gun. To remove the air, unscrew the gun head 1" to 1-1/2", operate as following:

Step 1: Draw back plunger rod fully and release quickly. Repeat several times. This will help exert force to move the rubber ring to enter the cartridge which is essential for a grease gun to work. Push plunger rod all the way in. Tighten the head to the barrel.

Step 2: Pressed Air vent valve several times to free the air. Now your grease gun is ready to use.

- Trigger should be pressed thoroughly during operation
- Oil before use and daily through Air Inlet

PARTS LIST



PART NO.	DESCRIPTION	Q'TY	PART NO.	DESCRIPTION	Q'TY
1	Finger Grip	1	12	Gasket	1
2	Air Inlet	1	13	Locking Nut	1
3	Switch	1	14	Washer	1
3-1	Trigger & Pin	1	15	Plunger	1
4	Body Screw	4	16	Backlash Gasket	1
5	Air Plunger	1	17	Long Spring Kit	1
6	Short Spring Kit	1	18	Container Tube	1
7	Housing Cap	1	18-1	Bottom Cap	1
8	Adapter	1	19	Piston Rod	1
9	Hexagonal Spout	1	20	Plunger Handle	1
10	Air Vent Valve	1	21	Locking Plate	1
11	Fill Nozzle	1			