



# 17 in. Gas Trimmer - Curved Shaft

Item No. 51958—318000001 & Up

Manufacturing No.—090309034

## Parts Catalog

---

### Ordering Replacement Parts

To order replacement parts, please supply: the part number, the quantity, and the description of each part.

### Understanding Reference Numbers

Each identified part in an illustration has a reference number. The reference number for a part also appears in the list, along with other information about the part.

### Understanding Figure Numbers

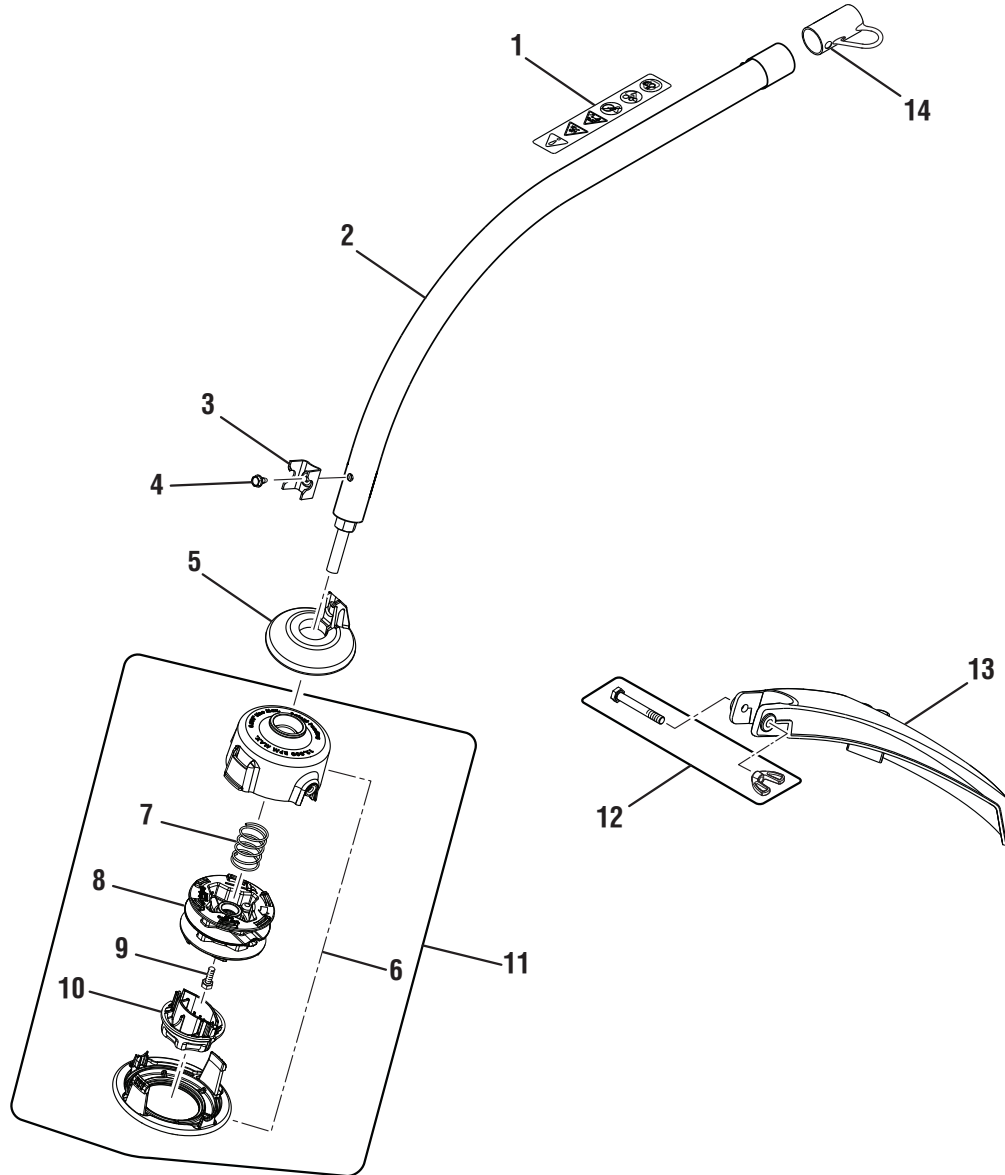
This catalog uses two special reference number formats, one to indicate parts in a service assembly and another to indicate a Figure Number.

Figure Numbers are represented as a Sub-Assembly which follow the exploded views.

Sub-Assemblies can be ordered as an Assembly or you may order any part individually.

**TORO STRING TRIMMER – MODEL NUMBER 51958**

**FIGURE A**

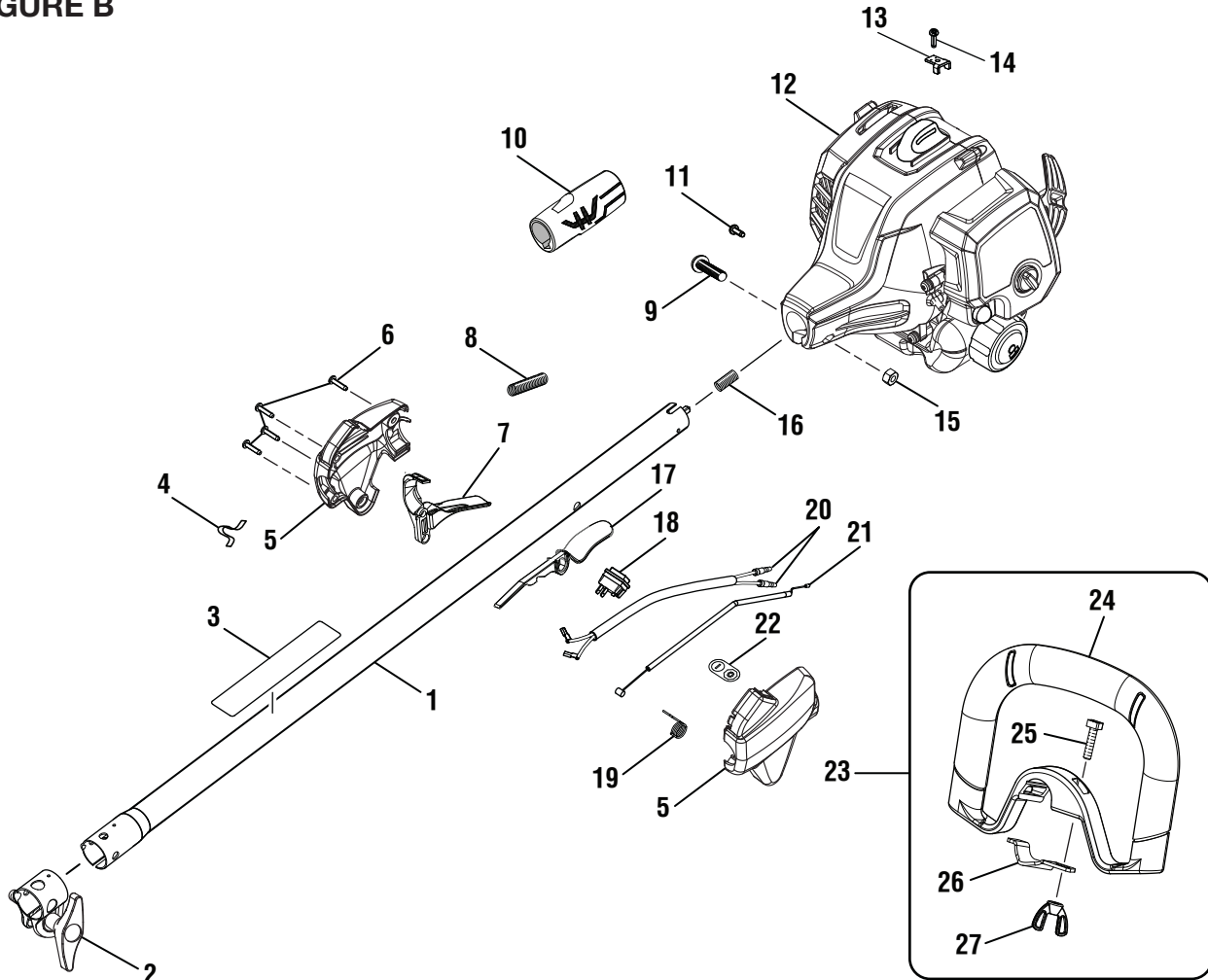


KEY PART NO.	NUMBER	DESCRIPTION	QTY
1	940657165	Warning Label .....	1
2	308841018	Curved Shaft Assembly (Inc. Key Nos. 1, 3-4 and 14) .....	1
3	638001001	Clamp .....	1
4	660647001	Screw (#10-32 x 3/8 in., Hex Washer Hd.) .....	1
5	522702001	Grass Shield .....	1
6	308827003	Stringhead Housing .....	1
7	678749001	Compression Spring .....	1
8	308924001	Spool .....	1
9	660650001	Bolt (5/16-18 x 1/2 in.) .....	1
10	518803003	Bump Knob .....	1
11	309034006	Trimmer Head Assembly (.095) (Inc. Key Nos. 6-10) .....	1
12	205012001	Fastener Parts Kit.....	1
13	308052010	Guard (Inc. Key No. 12) .....	1
14	518019002	Hanger Cap .....	1

To locate a source for replacement parts,  
 contact us toll free at 1-866-574-9242 (US) or 1-866-574-9243 (Canada).

**TORO STRING TRIMMER – MODEL NUMBER 51958**

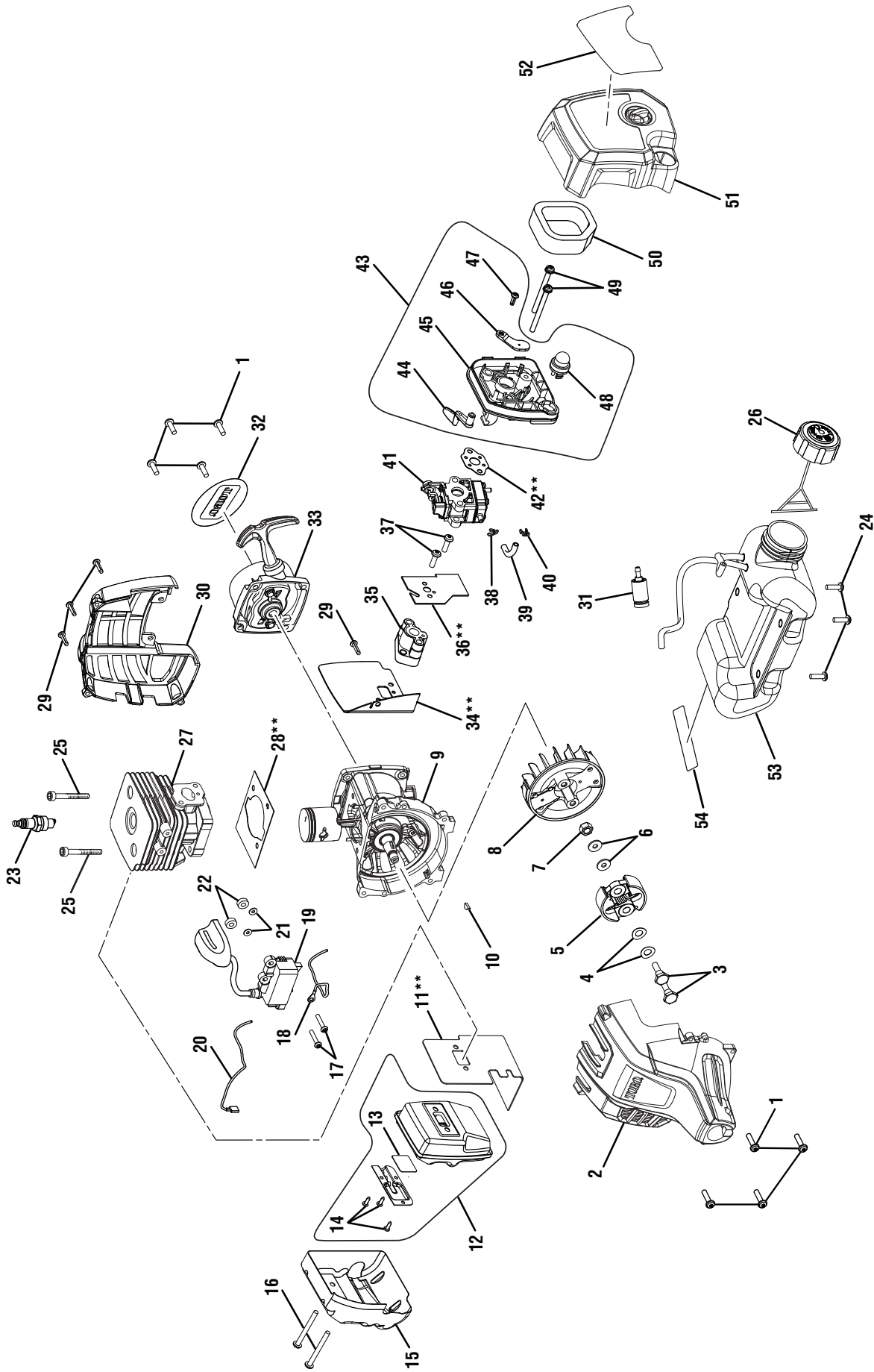
**FIGURE B**



KEY PART NO.	NUMBER	DESCRIPTION	QTY	KEY PART NO.	NUMBER	DESCRIPTION	QTY
1	308159025	Upper Boom Assembly (Inc. Key Nos. 2-3).....	1	16	690140011	Compression Spring.....	1
2	308045014	Boom Clamp Assembly.....	1	17	518695017	Trigger Lock.....	1
3	940657164	Warning Label .....	1	18	760961005	On/Stop Switch .....	1
4	638431001	Shoulder Strap Clip .....	1	19	690694002	Throttle Cable Spring .....	1
5	308869003	Control Handle Assembly.....	1	20	308863029	Lead Assembly .....	1
6	660563002	Screw (M4 x 20 mm, T20 Torx Hd.).....	4	21	308225011	Throttle Cable.....	1
7	518696017	Trigger.....	1	22	940864003	On/Stop Label .....	1
8	518210004	Corrugated Tube .....	1	23	308056009	Front Handle Assembly (Inc. Key Nos. 24-27).....	1
9	T660697001	Screw (M6 x 30 mm) .....	1	24	526760001	Front Handle w/Grip.....	1
10	570234016	Rear Handle Grip.....	1	25	660857001	Screw (1/4-20 x 1 in., Sq. Hd.) .....	1
11	660925011	Screw (M4 x 8 mm, T20 Torx Hd.).....	1	26	639167001	Front Handle Clamp .....	1
12	N/A	Powerhead Assembly.....	1	27	518949001	Wing Nut (1/4-20).....	1
13	638133001	Throttle Cable Clamp .....	1	<b>Not Shown:</b>			
14	660734001	Screw (M4 x 16 mm) .....	1	120900107	High Altitude Kit (Walbro)		
15	678029002	Hex Nut (M6.3 x 1).....	1	000998216	Spark Arrestor Kit		
				991000428	Operator's Manual		

To locate a source for replacement parts,  
contact us toll free at 1-866-574-9242 (US) or 1-866-574-9243 (Canada).

FIGURE C



**TORO STRING TRIMMER – ITEM NUMBER 51958**

**FIGURE C**

**PARTS LIST**

KEY PART NO. NUMBER	DESCRIPTION	QTY	KEY PART NO. NUMBER	DESCRIPTION	QTY
1	Screw (M5 x 20 mm, T20 Torx Pan Hd.).....	8	29	Screw (M4 x 18 mm, T20 Torx Pan Hd. S.T.).....	4
2	Front Housing Assembly.....	1	30	Rear Engine Housing.....	1
3	Clutch Shoulder Bolt (M6 x 22.5 mm, Hex Hd.).....	2	31	Fuel Filter.....	1
4	Curved Washer.....	2	32	Logo Label (Rear).....	1
5	Clutch Assembly.....	1	33	Starter Recoil & Starter Cup Assembly (Inc. Key No. 32).....	1
6	Washer (ID6 x OD15 x 1.2t).....	2	34	** Insulator Gasket.....	1
7	Flywheel Nut.....	1	35	Heat Dam Insulator.....	1
8	Flywheel.....	1	36	** Gasket.....	1
9	Crankcase Assembly.....	1	37	Screw w/Washers (M5 x 34 mm, T25 Torx Pan Hd.).....	2
10	Woodruff Key (10 mm x 3 mm).....	1	38	Hose Clip.....	1
11	** Muffler Gasket.....	1	39	Fuel Line (45 mm).....	1
12	Muffler Assembly (Inc. Key Nos. 13-14 and 58).....	1	40	Hose Clip.....	1
13	Screen.....	1	41	Carburetor Assembly.....	1
14	Screw (6-20 x 1/4 in., T20 Torx Pan Hd. S.T.).....	3	42	** Carburetor Gasket.....	1
15	Heat Shield.....	1	43	Airbox Base Assembly (Inc. Key Nos. 44-48).....	1
16	Screw (M5 x 50 mm, T25 Torx Soc. Hd.).....	2	44	Choke Lever.....	1
17	Screw (M4 x 22 mm, T20 Torx Soc. Hd.).....	2	45	Airbox Base.....	1
18	Lead Wire (Red).....	1	46	Choke Plate.....	1
19	Coil Boot Assembly.....	1	47	Screw (M4 x 12 mm, T20 Torx Pan Hd. S.T.).....	1
20	Lead Wire (Black).....	1	48	Primer Assembly.....	1
21	Washer (ID4.2 x OD10 x1t).....	2	49	Screw (M5 x 60 mm, T25 Torx Cap Soc. Hd.).....	2
22	Spacer (Phenolic).....	2	50	Air Filter.....	1
23	* Spark Plug (Champion RCJ4).....	1	51	Airbox Cover Assembly w/Label (Inc. Key No. 52).....	1
24	Screw (M5 x 16 mm, T25 Torx Soc. Hd.).....	3	52	Starting Instructions Label.....	1
25	Screw (M5 x 22 mm, T25 Torx Soc. Hd.).....	2	53	Fuel Tank & Cap Assembly (Inc. Key Nos. 24, 26, 54-55).....	1
26	Fuel Cap Assembly.....	1	54	Combustion Warning Label.....	1
27	Cylinder.....	1			
28	** Gasket.....	1			

\* Standard Hardware Item – May Be Purchased Locally

\*\*Non-Reusable Parts To locate a source for replacement parts, contact us toll free at 1-866-574-9242 (US) or 1-866-574-9243 (Canada).



This product is assembled under license from The Toro Company  
by Techtronic Industries North America, Inc.

**Techtronic Industries Power Equipment**

P.O. Box 1427  
Anderson, SC 29622  
USA

**Customer Service Information**

If your product requires service or maintenance,  
contact your nearest authorized service dealer.

To locate your nearest authorized service dealer for this product,  
contact us toll free at 1-866-574-9242 (US) or 1-866-574-9243 (Canada).