

## TVCTR42-TVCTR48 - INSTRUCTIONS

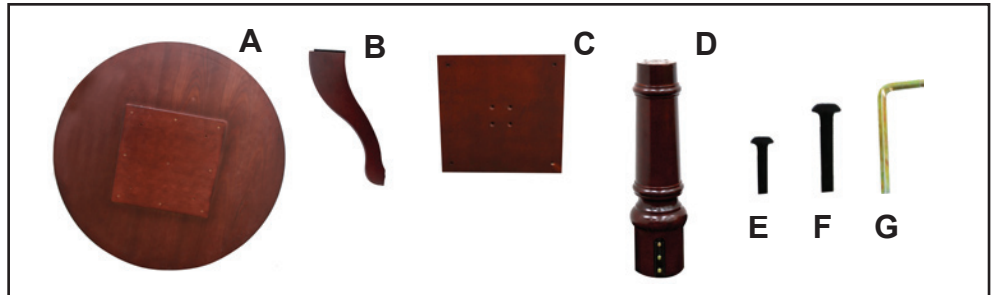
### Organize your parts and hardware.

Wooden components should include:

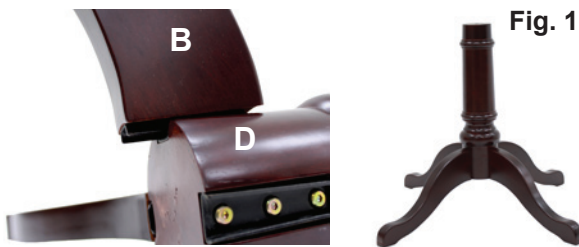
- A) 1 Top B) 4 Legs**  
**C) 1 Square Support D) 1 Cylinder**

Hardware includes:

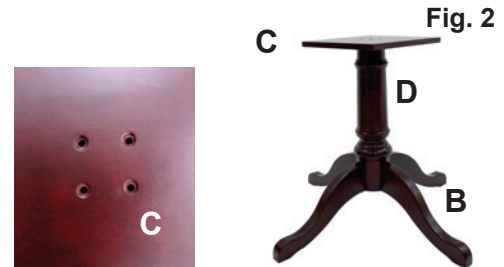
- E) 4 Small Bolts F) 4 Large Bolts**  
**G) 2 Allen Wrenches**



**Step 1:** Slide leg(B) into metal grooves located on the cylinder(D). Repeat for remaining 3 legs.



**Step 2:** Align square support(C) holes with holes drilled in top of cylinder(D). Insert 4 small bolts(E) into holes and tighten using allen wrench(G).



**Step 3:** Flip over and align holes in square support (C) with drilled holes in top(A). Insert 4 large bolts (F) into holes on (C) and tighten using allen wrench (G).



**Step 4:** Place table upright.



### IMPORTANT NOTICE:

- Place all wooden parts on a clean and smooth surface such as a rug or carpet to avoid the parts from being scratched.
- Check to be sure that you have all parts and hardware.
- Remove all wrapping materials, including staples & packing straps before you start to assemble.
- Do not tighten all screws/bolts until completely assembled.
- Keep all hardware parts out of reach of children.