

RYOBI
18V RECIPROCATING SAW
MODEL NO. P517
REPAIR SHEET

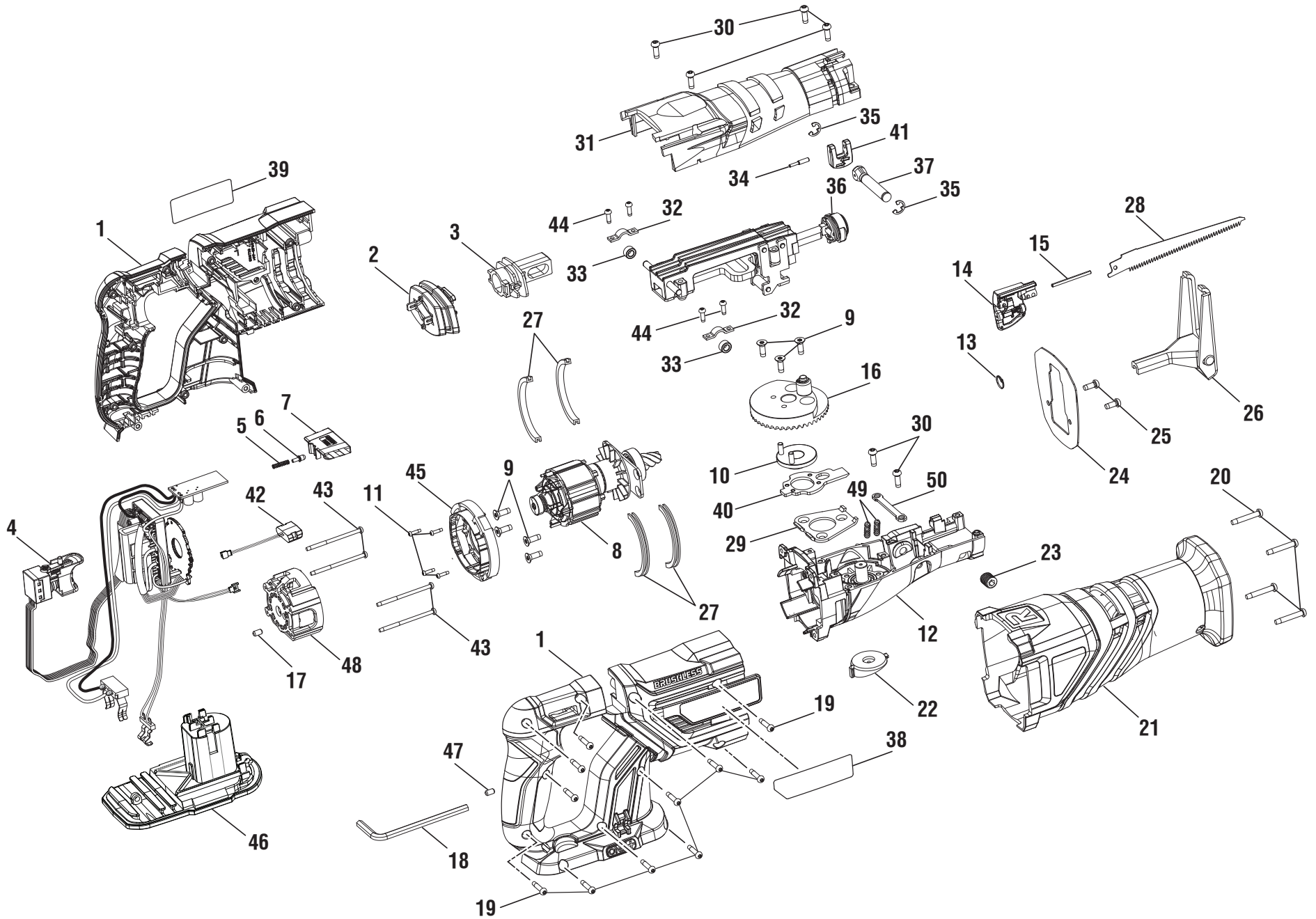
Techtronic Industries Power Equipment, Inc.

1428 Pearman Dairy Road, Anderson, SC 29625

Phone 1-800-860-4050

www.ryobitools.com

RYOBI 18V RECIPROCATING SAW – MODEL NUMBER P517



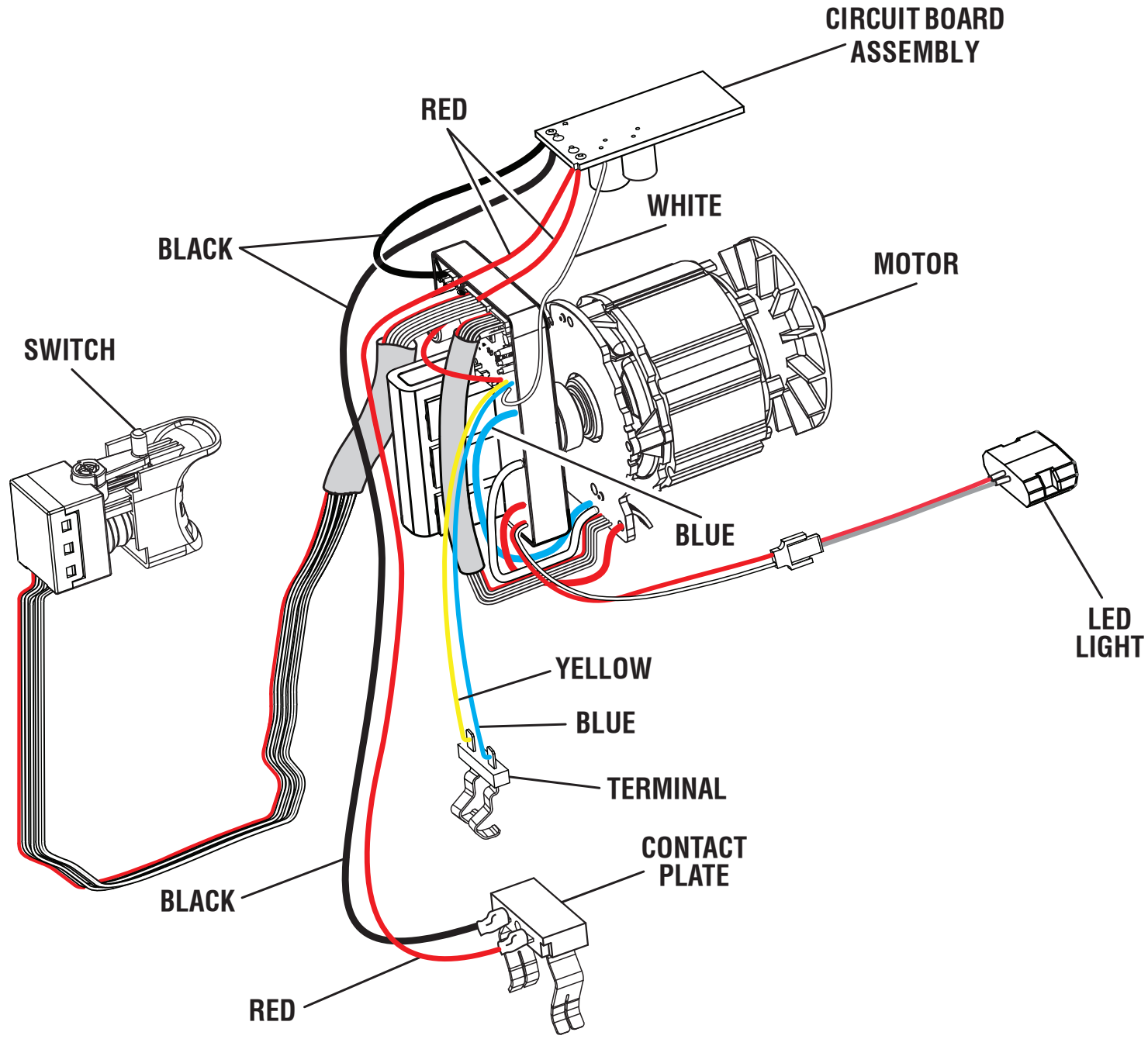
RYOBI 18V RECIPROCATING SAW – MODEL NUMBER P517

The model number will be found on a label attached to the motor housing. Always mention the model number in all correspondence regarding your **RECIPROCATING SAW** or when ordering repair parts.

PARTS LIST

KEY NO.	PART NUMBER	DESCRIPTION	QTY	KEY NO.	PART NUMBER	DESCRIPTION	QTY
1	204784001	Housing Assembly (Inc. Key Nos. 38-40).....	1	28	690291037	Blade (Wood Cutting)	1
2	564498001	Rubber Sleeve	1	29	639540001	Rear Mounting Plate.....	1
3	533733001	Connecting Rod.....	1	30	660165013	Screw (M4 x 12 mm, T20 Torx Hd.).....	6
4	204785001	Switch, Circuit Board and Contact Plate Holder Assembly	1	31	533732001	Gear Case Cover	1
5	692177001	Compression Spring.....	1	32	639538001	Bearing Plate	2
6	526010001	Pin.....	1	33	612042001	Bushing.....	2
7	360173001	Safety Button.....	1	34	673728001	Lock Pin.....	1
8	206687001	Motor Assembly	1	35	680814001	E-ring	2
9	661185001	Screw (#8-32 x 1/2 in., T15 Torx Hd.).....	7	36	206686001	Sliding Rod w/Blade Clamp Assembly.....	1
10	204788001	Sleeve Assembly	1	37	313050001	Orbital Pin Assembly	1
11	662436003	Screw (M2.3 x 9 mm, T8 Torx Hd.).....	4	38	941121870	Data Label	1
12	204786001	Gear Case Assembly	1	39	940304497	Logo Label.....	1
13	690502001	Torsion Spring.....	1	40	639536001	Drive Plate	1
14	204787001	Release Lever Assembly	1	41	533730001	Orbital Button	1
15	690518001	Pin.....	1	42	291355002	LED	1
16	206688001	Gear and Bearing Assembly (Inc. Key Nos. 9-10, 29 & 37).....	1	43	662576001	Screw (M3 x 48 mm, T10 Torx Hd.).....	4
17	550339001	Rubber Pin.....	1	44	661031003	Screw (M3 x 8 mm, T10 Torx Hd.).....	4
18	6800201	Hex Key Wrench (M5, 28 mm x 80 mm).....	1	45	533727001	Motor Front Cap.....	1
19	660031017	Screw (M3.5 x 16 mm, T10 Torx Hd.).....	11	46	533825001	Battery Foot.....	1
20	660024011	Screw (M4 x 28 mm).....	4	47	560219003	Rubber Stopper	1
21	564499001	Rubber Boot	1	48	533726001	Motor End Cap	1
22	531042001	Gear Case Cover	1	49	692674001	Compression Spring.....	2
23	660170001	Screw (M10 x 10 mm, Soc. Hd.).....	1	50	639537001	Plate.....	1
24	639541001	Guide Plate.....	1	Not Shown:			
25	660165015	Screw (M4 x 10 mm, T20 Torx Pan Hd.).....	2	995000228	Operator's Manual (961152771)		
26	300216056	Shoe Assembly.....	1	8-31-17			
27	564528001	Rubber Cushion.....	4	(Rev:01)			

RYOBI 18V RECIPROCATING SAW – MODEL NUMBER P517



WIRING DIAGRAM