



# Vinyl Tile Cutters



**12" Vinyl Tile Cutter  
10-900**

Hardened, adjustable steel blade for straight clean cuts

Lightweight, heavy duty aluminum

Built-in base casters for increased maneuverability on the job site

Moveable cutting guide to make consistent, repetitive cuts easier

**10-900 Carrying Case (Included)  
10-900-22**



**18" Vinyl Tile Cutter  
10-918**

Sturdy, flip-proof handle

Easy to read measuring guide

Slotted handle for easy carrying

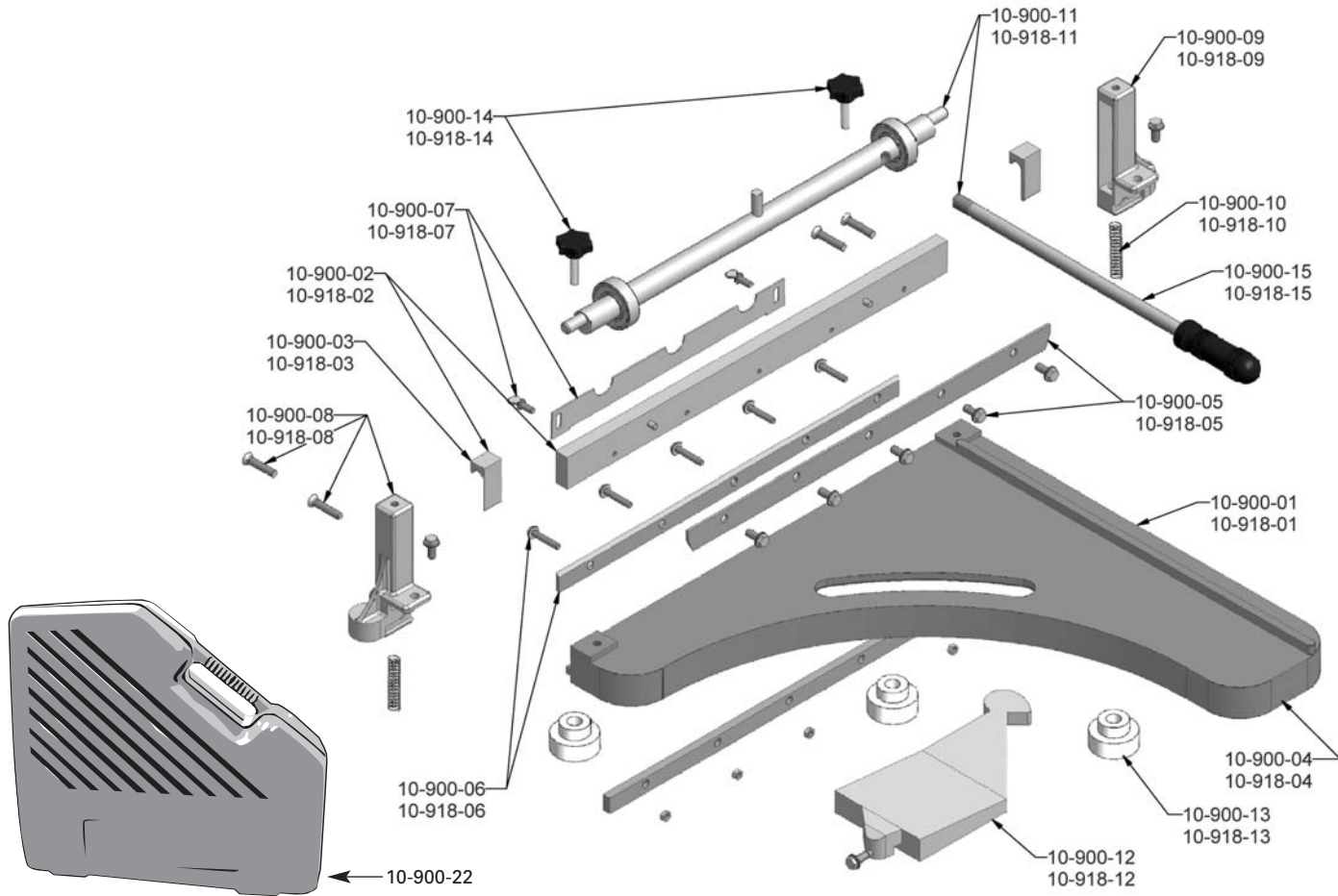
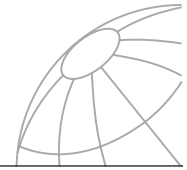
10-900  
10-918

The use of VCT and Luxury VCT Tile in commercial and residential installations has increased in popularity in recent years. More than ever, designers and end users are incorporating patterns in the floor design to enhance the appeal of the overall installation. This means that there is an increased need for the professional flooring installer to accurately and efficiently cut the tile.

The Roberts range of professional VCT cutters is designed to exacting standards and incorporates many of the features needed to meet these demands. Lightweight yet rugged, Roberts VCT cutters include accurate cutting guides, heavy duty aluminum bases, industrial grade carbon steel blades and ball bearing casters, for easy maneuverability on the job site.

*Cutting VCT just got easier with Roberts.*

# Vinyl Tile Cutters



## Parts List

## 10-900, 10-918

Part	Description	Qty.	Part	Description	Qty.
10-900-01	Base Assembly	1	10-918-01	Base Assembly	1
10-900-02	Blade Carrier Bar Assembly w/ 10-900-03	1	10-918-02	Blade Carrier Bar Assembly w/10-918-03	1
10-900-03	Pillow Block Set	1	10-918-03	Pillow Block Set	1
10-900-04	Base Casting	1	10-918-04	Base Casting	1
10-900-05	Top Cutting Blade w/Bolts	1	10-918-05	Top Cutting Blade w/Bolts	1
10-900-06	Lower Fixed Blade w/Bolts	1	10-918-06	Lower Fixed Blade w/Bolts	1
10-900-07	Floor Guide w/Wing Screw (2)	1	10-918-07	Floor Guide w/Wing Screw	1
10-900-08	Left Post w/Screws	1	10-918-08	Left Post w/Screws	1
10-900-09	Right Post w/Screws	1	10-918-09	Right Post w/Screws	1
10-900-10	Return Spring, Set of 2	1	10-918-10	Return Spring, Set of 2	1
10-900-11	Crankshaft w/Handle & Grip	1	10-918-11	Crankshaft w/Handle & Grip	1
10-900-12	Tile Guide w/ Screws	1	10-918-12	Tile Guide w/Screws	1
10-900-13	Rubber Feet, Set of 3	1	10-918-13	Rubber Feet, Set of 3	1
10-900-14	Crankshaft Adjustment Screw Knobs (2)	1	10-918-14	Crankshaft Adjustment Screw Knobs (2)	1
10-900-15	Handle Grip	1	10-918-15	Handle Grip	1
10-900-22	10-900 Carrying Case	1			