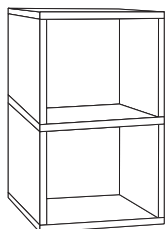
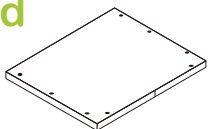


2 SHELF CUBBY (with backer board)



Included



2 Horizontal zBoards - top and bottom holes on one side only



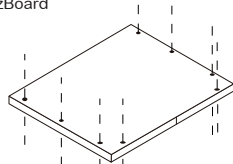
32 Pins



4 Vertical zBoards adhesive strips on 2 edges of each zBoard



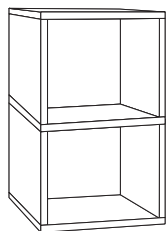
2 Backer Boards adhesives strips on 2 edges



1 Middle zBoard holes on top and bottom

WARNING: CHOKING HAZARD
Small parts NOT for children under 3 years

Important



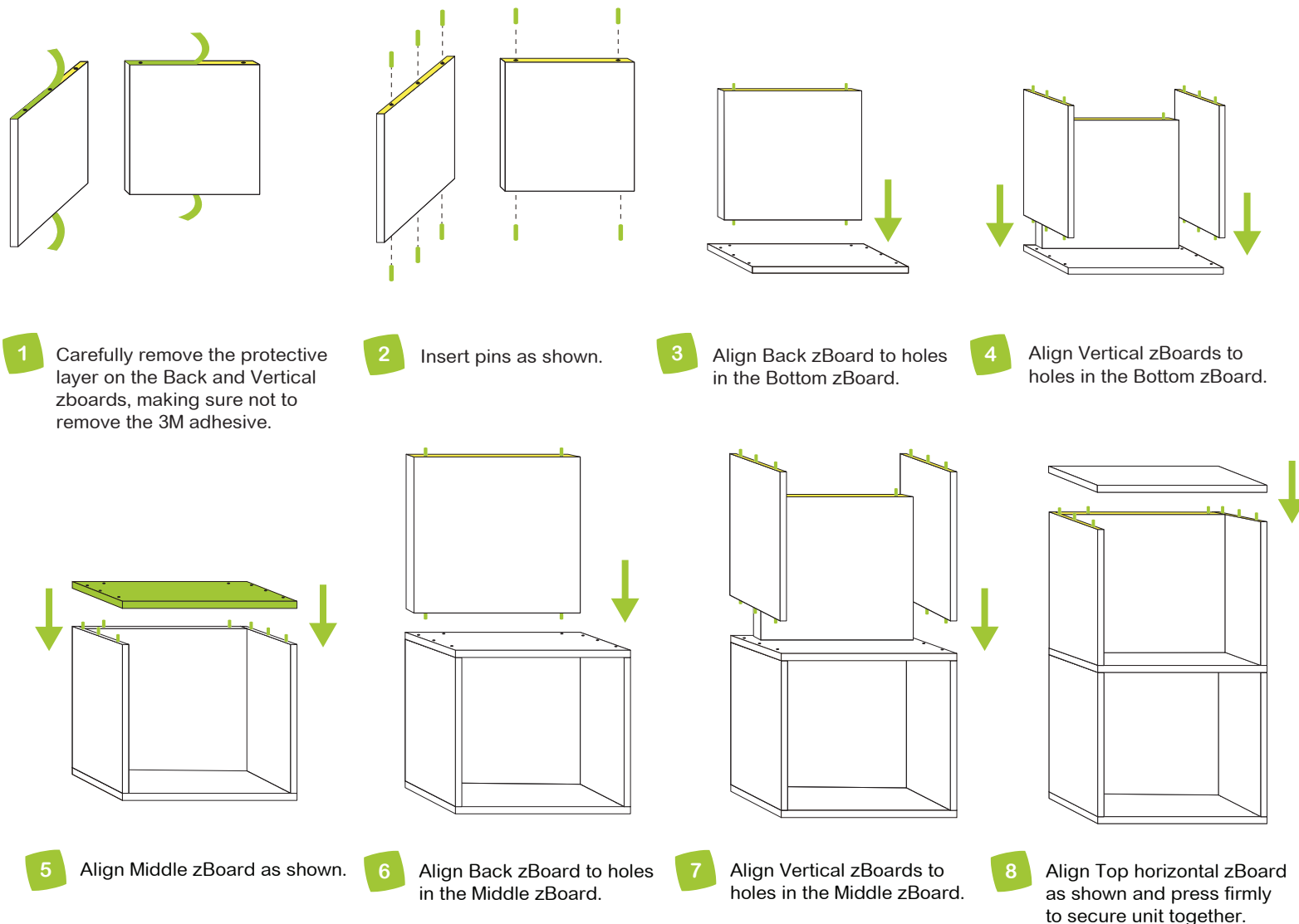
THIS SIDE UP

CAUTION placing unit on its side or back will compromise structural integrity. Use right side up.



- Assemble your unit on a flat even surface
- Make sure zBoard surfaces are clean and dry

- When moving your Way Basics unit, lift from the bottom
- Indoor use only. Not in bathroom.



Enjoy building possibilities!