

Star Cedar Sheds



SELECT PLUS PREMIUM SHINGLE CEDAR SHED

8' W X 6' D

NOTE

Local building practices may require you to purchase a permit to construct this storage shed. Star Lumber and its representatives are not responsible for any costs associated with the search of, or compliance to any codes or covenants in your local area.

Cedar Storage Shed

Star Cedar Sheds

BEFORE YOU BEGIN

- Check with your local building authority before erecting.
- Read instructions thoroughly before you begin.

Check All Parts

- If a part is missing, circle the part in question and call.
- Lumber is graded from one side, use most attractive face to the outside.
- Assistance is necessary to handle, fit, and secure some components.

Squareness is extremely Important!

- Keep 90° corners and 90° perpendiculars throughout the assembly to ensure all components fit together.

Check foundation size

- Before starting on your foundation, make sure you are building the correct size foundation for your building.

APPLICATION OF ALTERNATIVE ROOFING PRODUCTS.

Your Star Cedar Shed kit comes with high quality western red cedar shingle panels to be used in the roofing process. Occasionally, customers are required to use alternative roofing products such as composition shingles. Should this be necessary, you will need to purchase additional materials as noted in the chart below. These additional materials will provide a solid roof deck, to which nearly any alternative roofing can be applied. Once you have the solid roof deck in place, please follow the application instructions provided with your alternative roofing product of choice.

Shed Size	Size	Quantity
8' X 6'	1" x 4" x 94"	12

Total square footage of your roof is: 80 sq. ft.

Please note: you will likely have to buy standard length pieces and cut them back to the lengths listed above.

Star Cedar Sheds

MATERIALS LIST

Hardware Included in Your Kit

- 4 lbs. 8d galv. box nails
- 4 lbs. 12d galv. box nails
- 6 lbs. 1^{3/4}" galv. roofing nail
- 3 lbs. 1^{1/4}" Black Screws
- 16 ea. 2^{1/2}" Silver screws

(Nail quantities are estimated)

- Felt paper for roof
- 2 ea. Handles
- Hasp

Tools and Materials Needed NOT Included

- 9 ea. Pier blocks
- 9 ea. Adjustable Saddles
- Hammer
- Builders level
- Tape measure
- Saw
- Screw driver (powered helpful)
- Framing square
- Staple gun

Lumber & Hardware Included in Your Kit

Floor framing

2x4 Floor Joists

- 2 @ 72"
- 5 @ 93"

Flooring

1x4 HEM/FIR

- 28 @ 72"

Wall framing

2x4

- 1 @ 17"
- 1 @ 18^{1/2}"
- 2 @ 23^{1/4}"
- 1 @ 48"
- 23 @ 72"
- 4 @ 89"
- 4 ea. Angle Braces

Shingle Panel Siding

- 34 @ 24"
- 14 @ 36"
- 36 @ 72"
- 18 @ 96"

Doors

1 set 48" Premade

1x2 Cedar

- 1 @ 36"

Windows

- 1 ea. 2/0 x 2/0 Window

Lumber & Hardware Included in Your Kit

Roof

2x4 Framing

- 8 @ 60" rafters
- 1 @ 94"
- 8 ea.. Hangers
- 4 ea.. Hurricane anchors

1x4 Skip Sheathing

- 22 @ 94"

1x4 Hem/Fir Cross Tie

- 2 @ 48"

Trim

1x2 Cedar (for window)

- 2 @ 24"
- 2 @ 27"

1x6 Cedar Facia and Skirting (Rough 1 Side)

- 6 @ 72"
- 4 @ 96"

1x4 Cedar for corners (Rough 1 Side)

- 8 @ 96"

Cedar Shingles

- 20 ea.. 8A Roof Panel

1x4 Cedar Ridge Cap (Rough 1 Side)

- 2 @ 96"

Sort all materials before you begin.
If there are any questions or shortages
please call Star Lumber
for assistance or replacement parts
@ 888-659-1832

Star Cedar Sheds

Mold and Mildew Care and Prevention

Molds might best be defined as a growth of minute fungi, or as any of the fungi that produce such a growth. Mildew is best described as a coating or discoloration, caused by fungi, when the substrate is exposed to moisture, or as any of the fungi that produce such a growth.

While STAR Cedar Sheds does its utmost to eliminate the exposure to moisture of our shed components, incidents in storage, handling, and transfer of products can result in situations where molds or mildew can result. Both are limited to situations where the environment is damp, stagnant, dark, and where airborne spores can find the product.

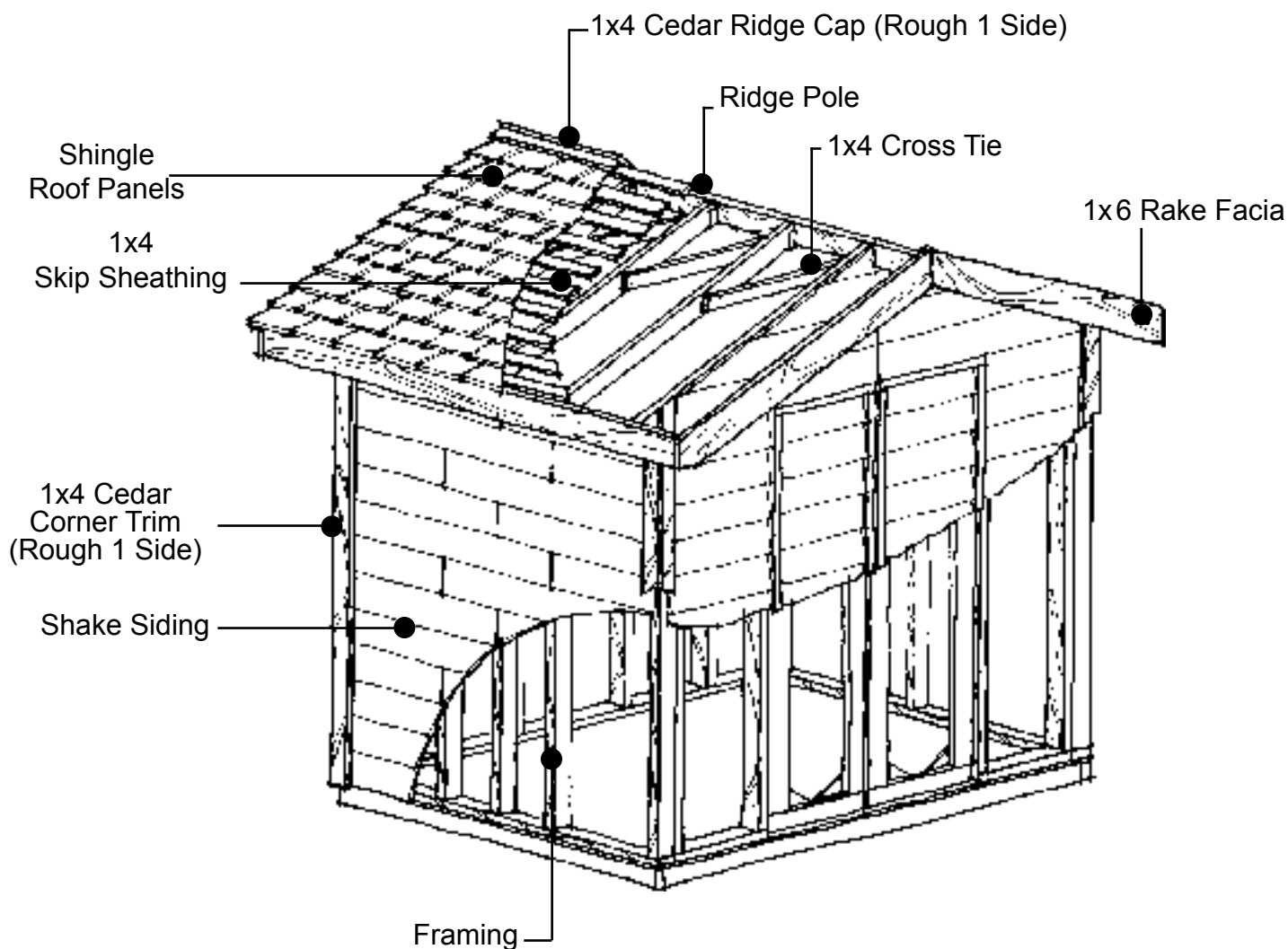
Spores of molds and mildew are as common as dust and are found virtually everywhere, so the occurrence of the other criterion can easily result in incidence of either fungi. Neither is a real cause for concern, especially with Western Red Cedar, one of nature's most durable products, and both can easily be dealt with. In dealing with the problem, however, you also correct the unsightly appearance of these fungi. The condition will likely never reoccur after the shed is assembled, as the dark and stagnant aspect of the growing condition is usually not duplicated. You should take care not to create this type of environment by storing products or growing plants along the surface of the shed, inhibiting light, and airflow, or holding moisture in contact with the shed itself.

To rectify any mold or mildew condition:

1. Simply prepare a solution of 3 quarts (or liters) of water, to 1 quart (or liter) of household bleach, along with ¼ cup (250 ml) of ammonia free liquid dishwasher detergent. Do not use bleach older than six months as it will lose its effectiveness. Also, do not use ammonia based detergent, as it can give off harmful gases, when mixed with bleach.
2. Using a spray canister designed for insecticide application, apply the solution liberally. Allow to penetrate for 15-30 minutes. This allows the bleach time to permeate the fungus and kill all the spores present. The non-foaming liquid dishwasher soap aids in the removal of the mold, mildew, or any dirt associated.
3. If you have access to a power washer, power wash the substrate using the same solution. Use a power washer of approximately 2500 PSI, with no less than a 25° nozzle. Do not spray closer than 12" (300 mm) as this can damage the substrate. If a power washer is not available, a soft brush should be used and the substrate should be fully scrubbed and then rinsed in clear water afterwards.
4. Allow to dry.

By following these directions, the mold or mildew issue should be completely eradicated and you should not have any type of recurrence.

Star Cedar Sheds



Cut-away View Typical Shed 8x6 Version

Star Cedar Sheds

Step # 1 FOUNDATION

Caution - Read Carefully Foundation

You must have a level and stable base to build your kit upon. Do not place kit in contact with soil.

Concrete Slab

Please observe dimensions for framing before pouring your slab.

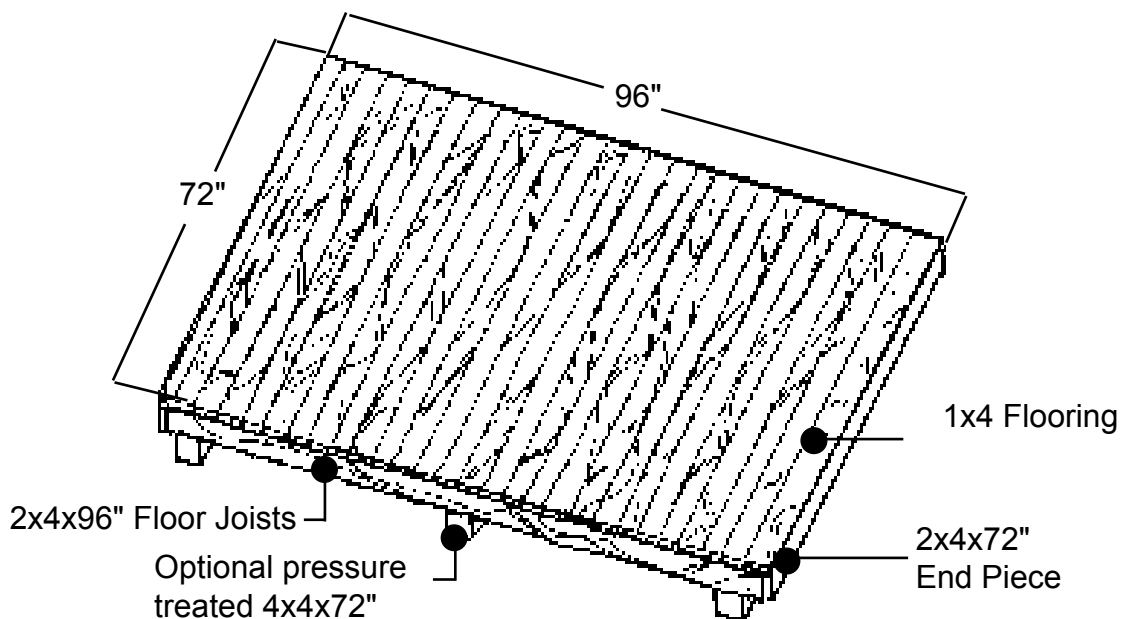
8'x6' **96" wide** x **72" deep**

Replace floor framing with pressure treated 2x4's to reduce rot. If you don't use floor supplied with kit replace bottom plate with treated 2x4's. Secure shed to slab with bolts imbedded in concrete.

Pier Block With Treated 4x4

Place blocks no more than 4' apart. They do not have to be at the exact corner of floor frame. Bury blocks to bottom of bracket or 4x4 whichever is lowest. 4x4 may come into contact with soil.

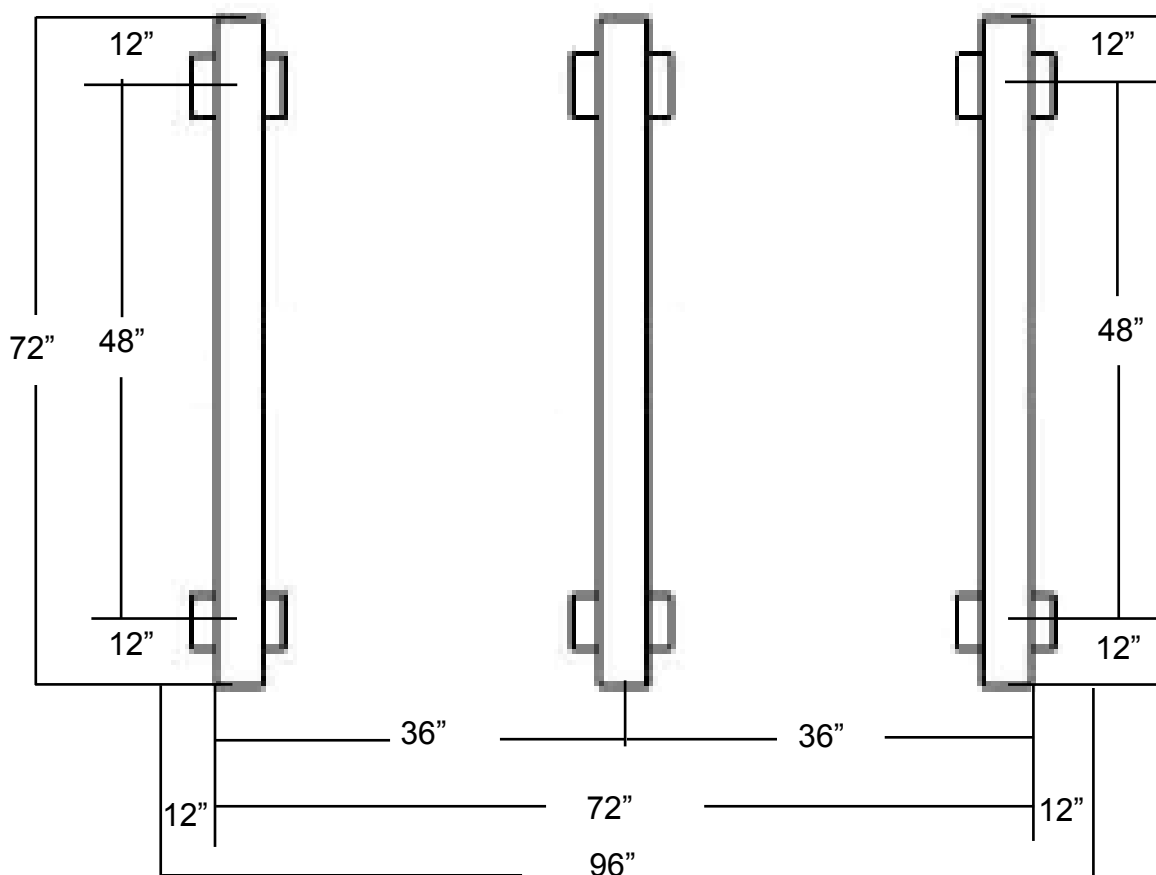
Level 4x4's by placing 2x4 across at several spots and checking with your level. Take time to be sure base is level all directions. Any errors here will affect how well your doors will function.



Floor Framing

Star Cedar Sheds

8'x6' Foundation



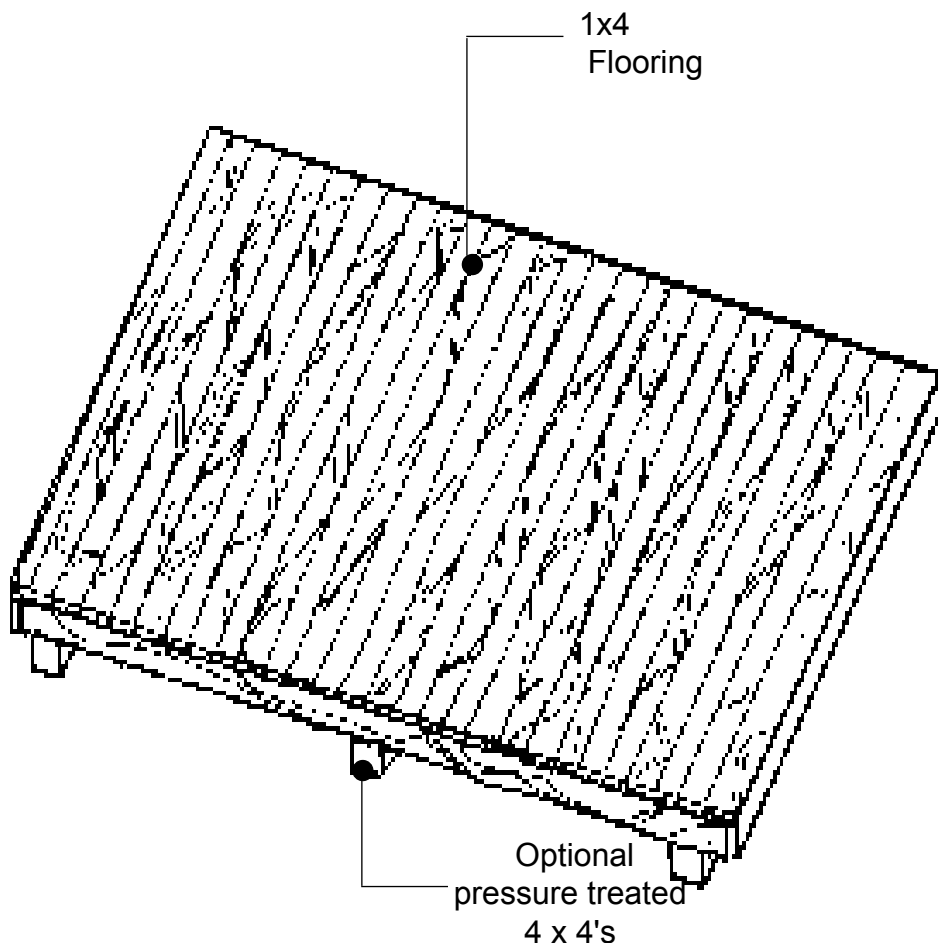
The overall width of the shed is 96". The 4x4's should be set 12" in from the outside edge of the shed. The end blocks should be centered 12" in on each end of the 4x4's and the center blocks are centered between the outer blocks.

Six 12" pier blocks, six adjustable saddles and three 4x4x72" are minimum quantities.

Star Cedar Sheds

Step # 3 FLOORING

Select best face to show. Your kit came with 1x4 flooring. Nail it down with two 8d nails for each joist. Start at one end then work your way across going in the opposite direction of the floor joists. You can leave gaps between the boards if you like but it is not necessary. You may have to trim the last board if it goes past the frame below. Make sure flooring is hem/fir not cedar.



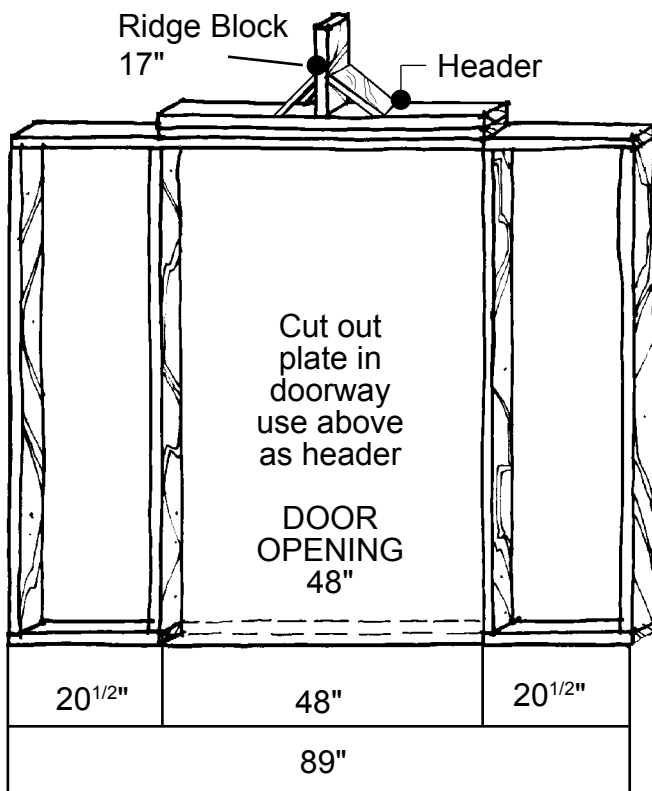
Floor

Star Cedar Sheds

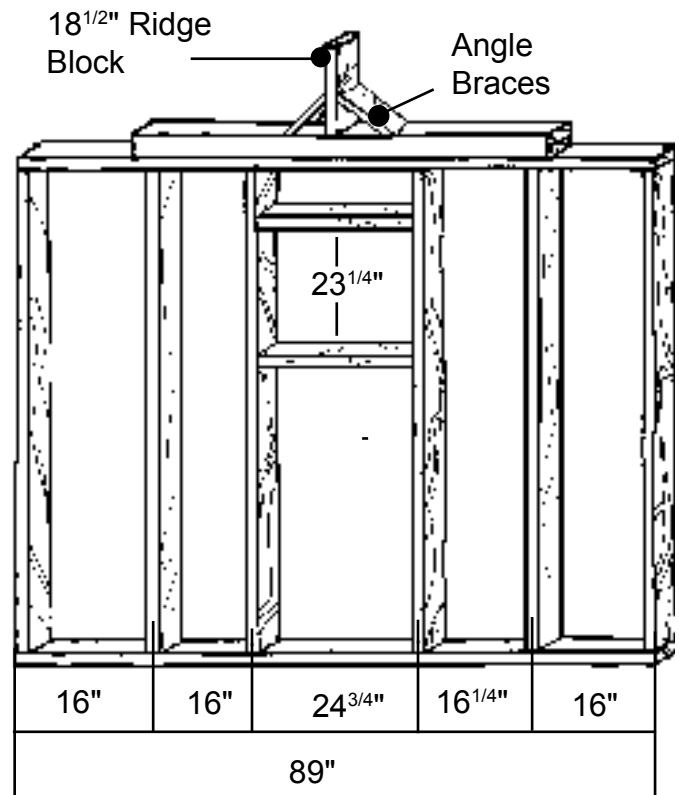
Step # 4 FRAMING

Walls

With the top and bottom plates together mark the location of the studs. **Be sure to follow the drawing carefully. If the studs are not in the right spot the siding will not fit.** Nail the plates to the studs with two 12d nails at each joint. Make sure that the center of each stud lines up with the mark you made on the plate. On the front wall, add a 2x4x48" piece centered over the doorway. Attach the 18^{1/2}" ridge block and angle braces to the center of a 2x4x72". Then attach to the top of the back wall. Ensure that the ridge block is in the center of the back wall using the 2^{1/2}" grey screws. Mark back wall for window framing. Top frame spacing is 3" from the top plate to top of window frame. Bottom frame is 23^{1/4}" from bottom of top frame to top of bottom frame. Use 12d nails driven through adjacent stud.



Front Wall

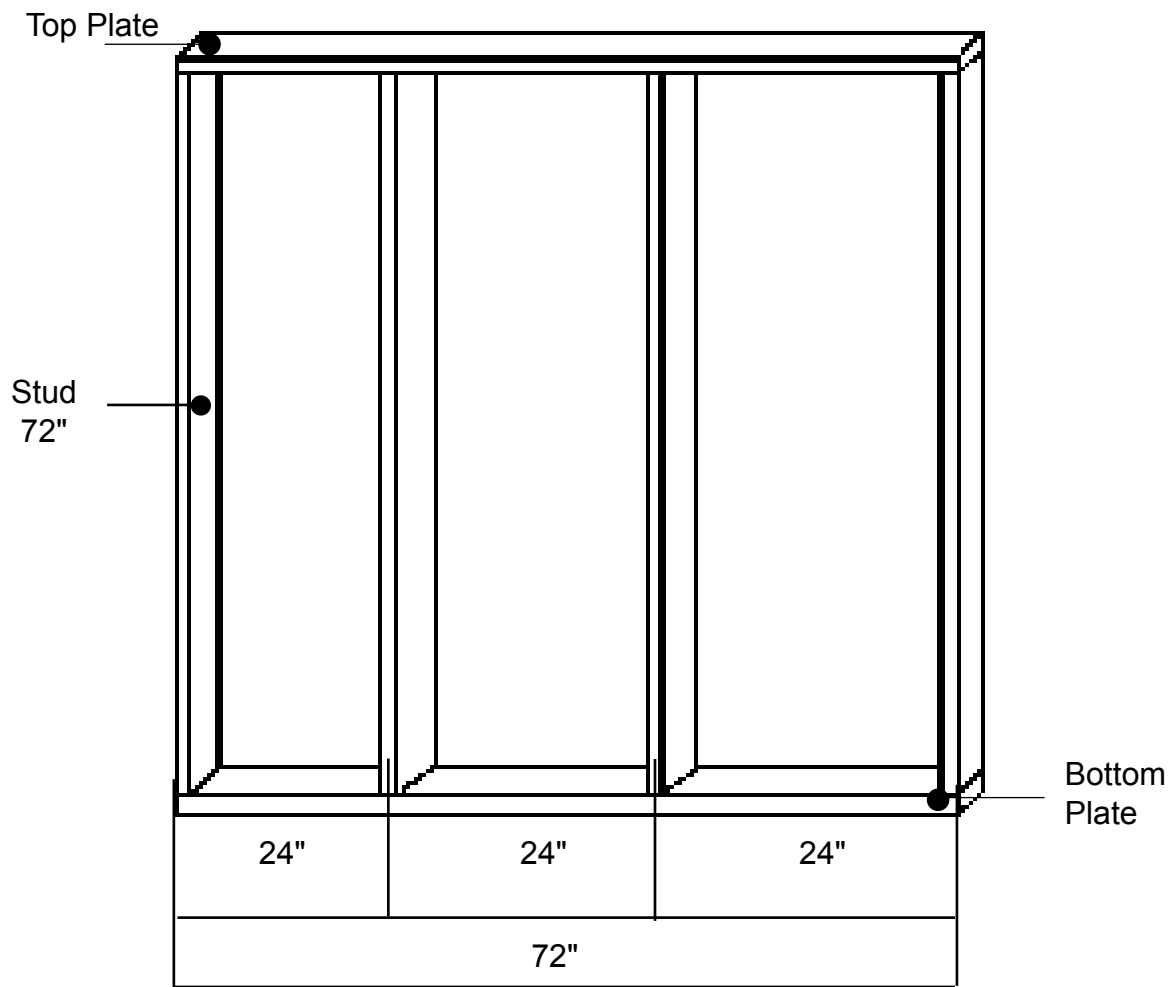


Back Wall

Stud spacing is measured to the center except for the end of the wall and the door framing on the front walls

Star Cedar Sheds

Step # 4 FRAMING



Side Wall

Stud spacing is measured to the center except for the end of the wall.

Star Cedar Sheds

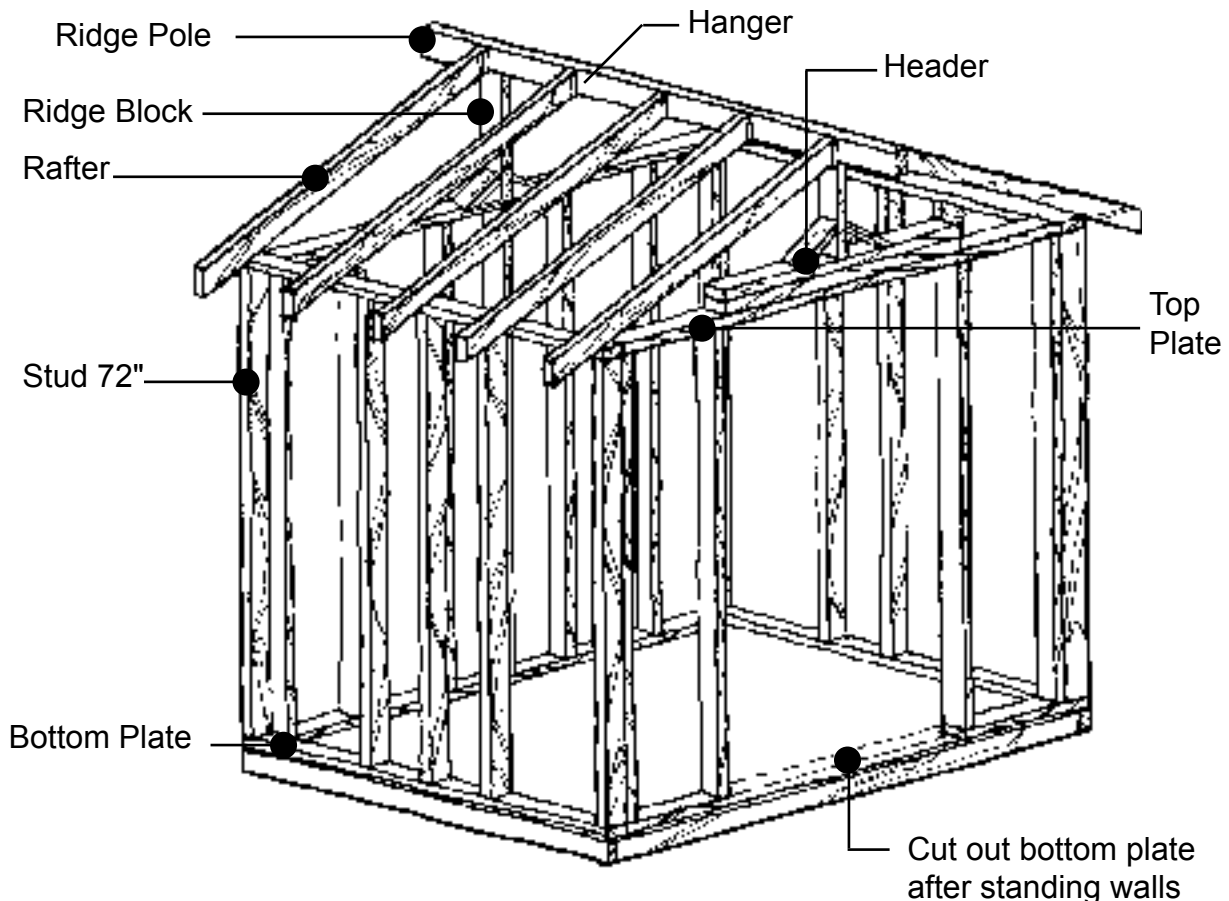
Standing the walls

Stand the walls up. Nail them to the floor with one nail every 18" or so (no nails in the doorway). Add extra nails just outside the doorway. Then nail the walls together at the corners. Make sure that the top plates are lined up before you nail the corner studs together. Here again one nail every 18" will do.

Cut the bottom plate out of the doorway. Make your cuts flush with the stud on each side. Your handsaw will work the best. But take care that you don't cut too deeply. Now, nail the 17" ridge block to the center of this piece of 2x4. Screw the angle braces to hold ridge block in place using the 2^{1/2}" grey screws found in the parts bag.

This new piece is nailed on top of the other 48" 2x4 over the doorway.

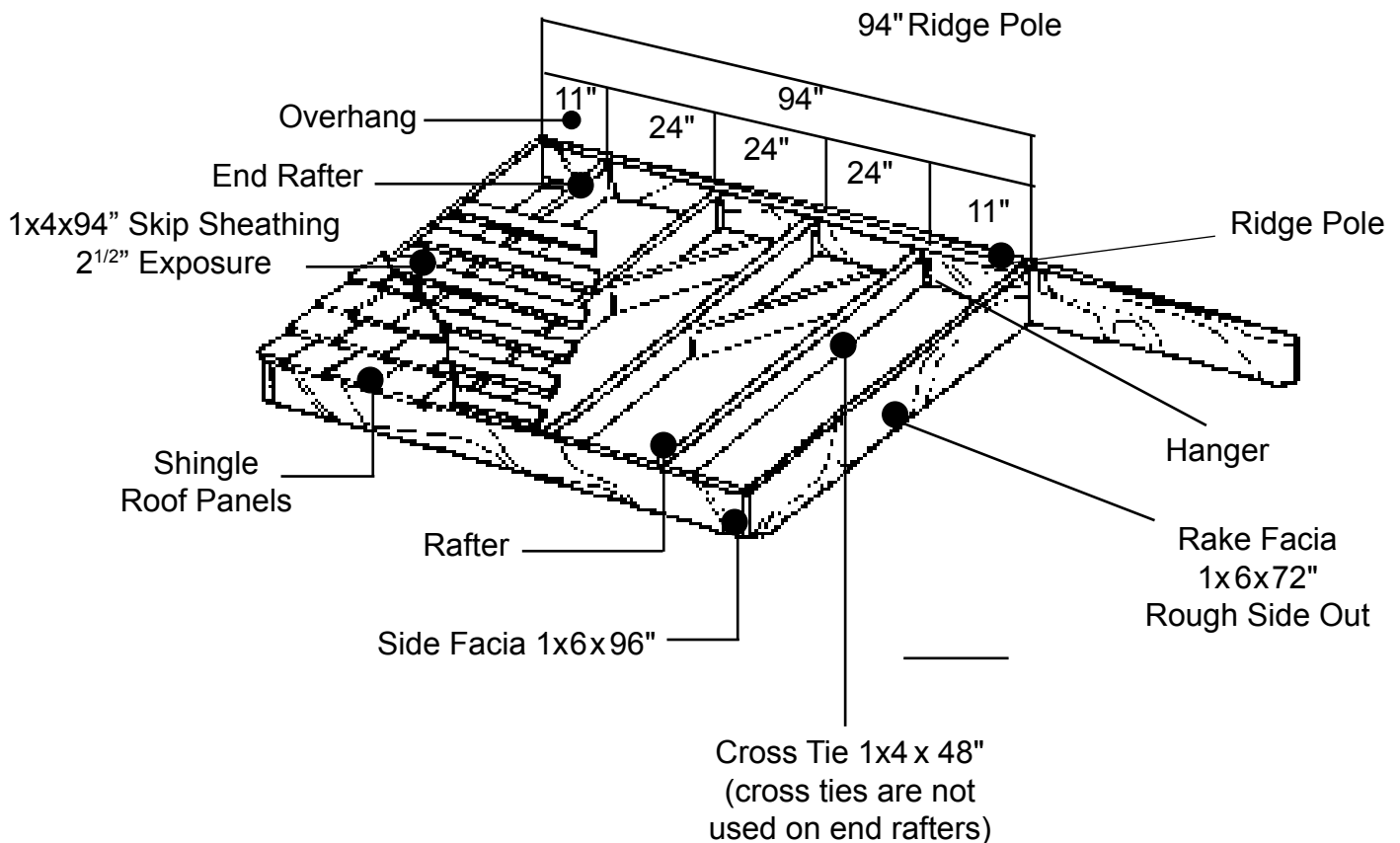
****A note to those of you who are always thinking up better ways. If you try to simplify this procedure by cutting the bottom plate before you stand the walls, you might give yourself some grief later on when you go to hang the doors. So unless you've done this before its best to follow the instructions.**



Typical Frame

Star Cedar Sheds

Step # 5 ROOF FRAMING



Rafter spacing is from the end of the ridge pole to the front edge of the end rafters and the center of the inside rafters.

End rafters will be flush with front or back wall, the overhang is 11".

All other measurements are to the center of the rafter

Roof Framing

Star Cedar Sheds

Step # 5 ROOF FRAMING

Roof Framing

Building the roof of your shed can be dangerous so follow the rules of good safety practice. When using ladders observe and follow the warning labels. Minimize the use of power tools while aloft. Work with or near someone.

Ridge pole layout

Find the ridge pole and the rafter hangers. Mark the rafter location on both sides of the ridge pole. Screw the hangers at each mark about 5/8" below the top of the ridge pole, using the 1^{1/4}" screws.

Test the first one for fit with a rafter. The rafter should be within 1/8" of top of ridge pole.

Next, toe nail the ridge pole to the top of the ridge blocks. Use 4 nails at each block. You'll find it's easier to start your nails before you lift the ridge pole into place.

Rafters

On the top plates of the side walls mark off the location for the hurricane anchors. The measurements are the same as for the ridge pole starting from the end rafter. Center hurricane anchors over your marks and secure with 1^{1/4}" screws. End rafters do not use a hurricane anchor.

Lay the rafters in the top hangers and secure with 1^{1/4}" screws. A 12d nail through the top of the rafter into the ridge pole will draw them up tight. After all rafters are secured to the ridge pole, secure the rafters in the hurricane anchors with 1^{1/4}" screws. Ensure that the rafters hang over the outside of the shed an equal amount on each rafter. The end rafters are flush with the outside of the end walls (so that the siding will proceed up the wall without interruption). Toe nail these end rafters with 12d nails to the top plate.

Cross Ties

The 48" 1x4 cross ties should be nailed to the rafters with five 8d nails at each end. Install them level, with the top corner at the top edge of the rafter. It will help to make the roof more stable if you install the cross ties as you install each pair of rafters. The first and last rafters do not have cross ties.

Star Cedar Sheds

Step # 6 SHINGLE PANEL SIDING

The Shingle Panel Siding that you are about to install will provide your shed with long lasting good looks.

The following three pages will illustrate the proper layout of siding. It is a good idea at this time to sort your siding by size,

Building paper is applied now.

Start the first course of siding with the plywood on the siding 1" below the top of the floor. Tip: to make sure that you begin level, start several shake nails at your marks. Then rest the siding on top before you nail it off.

Starting in the middle of the wall, work your way out to the corners.

On the front wall, start at the doorway opening. The corners won't be covered by siding on all of the walls. The corners will later be covered by corner trim. The important thing is to get the parts that show looking good.

Position nails at the studs. Nail on or just below the nail line which is 3/4" from the top edge of panel. Always put one nail 1/2" from the ends of each panel. Nail each course of panels from one end to the other at each stud. Never nail from both ends toward the middle.

Each course of panels will automatically align when laid up. Level should be checked occasionally.

The siding at the top of the front and rear walls will need trimming before you nail it in place. Place siding where it will be nailed and mark the back with pencil along the rafter. Cut along the mark with saw. The area around the ridge pole will need a little extra notching to make it fit.

WINDOW INSTALLATION

Windows are to be installed prior to applying the siding.

Place window in frame opening from the outside. Ensure that the drain holes are on the outside and at the bottom of the window. Use 1 1/4" black screw to secure window to framing, two on each side, bottom and top of frame.

Star Cedar Sheds

Pre-made T&G doors

Rake Facia (rough side out)

Facia (rough side out)



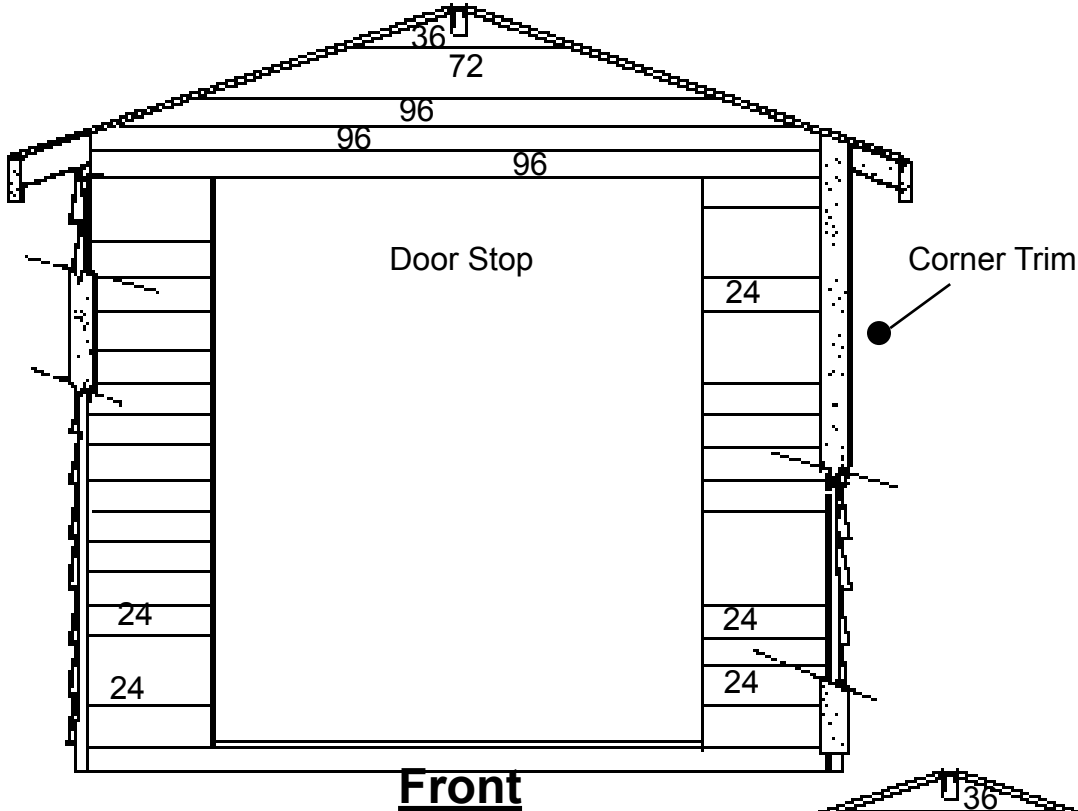
Edge of siding to come flush with outside edge of door framing. (The Select Plus does not include 1x4 cedar door trim and the T & G is horizontal.)

The bottom edge of the first row of siding should be 1" below the bottom of the flooring.

Corner Trim (rough side out)

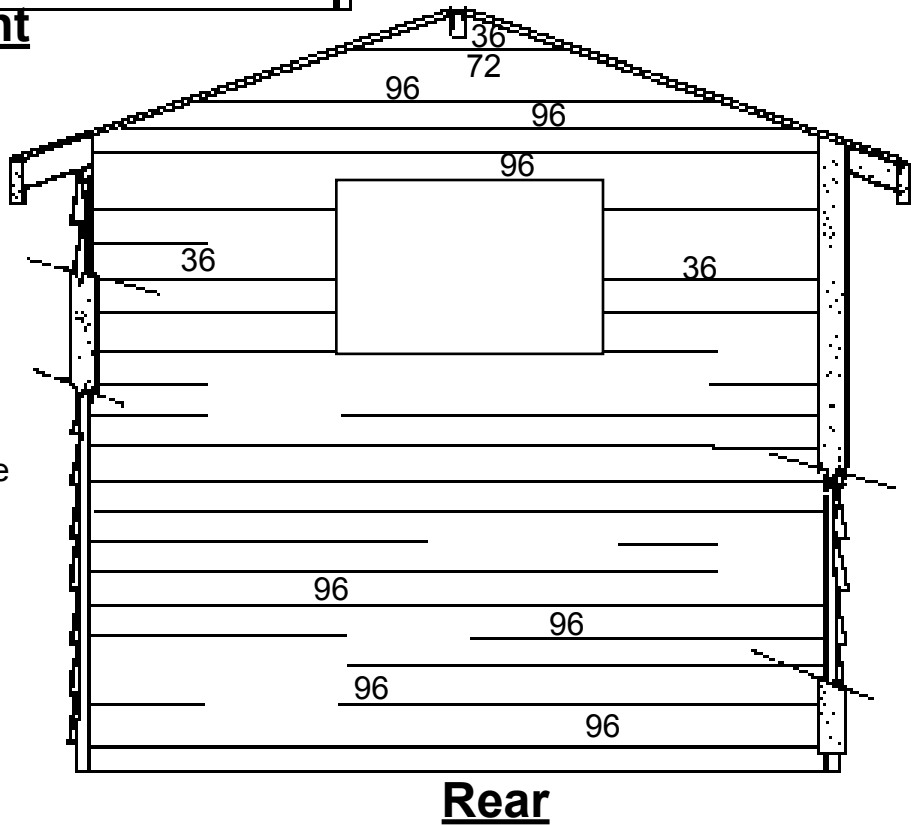
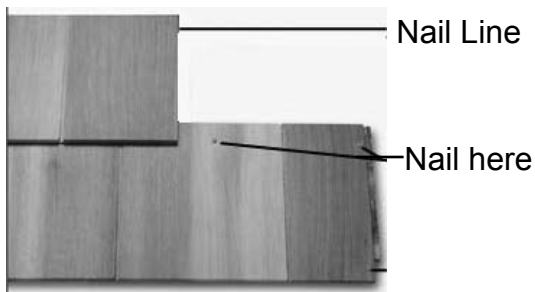
Star Cedar Sheds

4.5" Shingle Panel Layout



Sizes are nominal

LENGTH	QTY
24"	34
36"	14
72"	36
96"	18

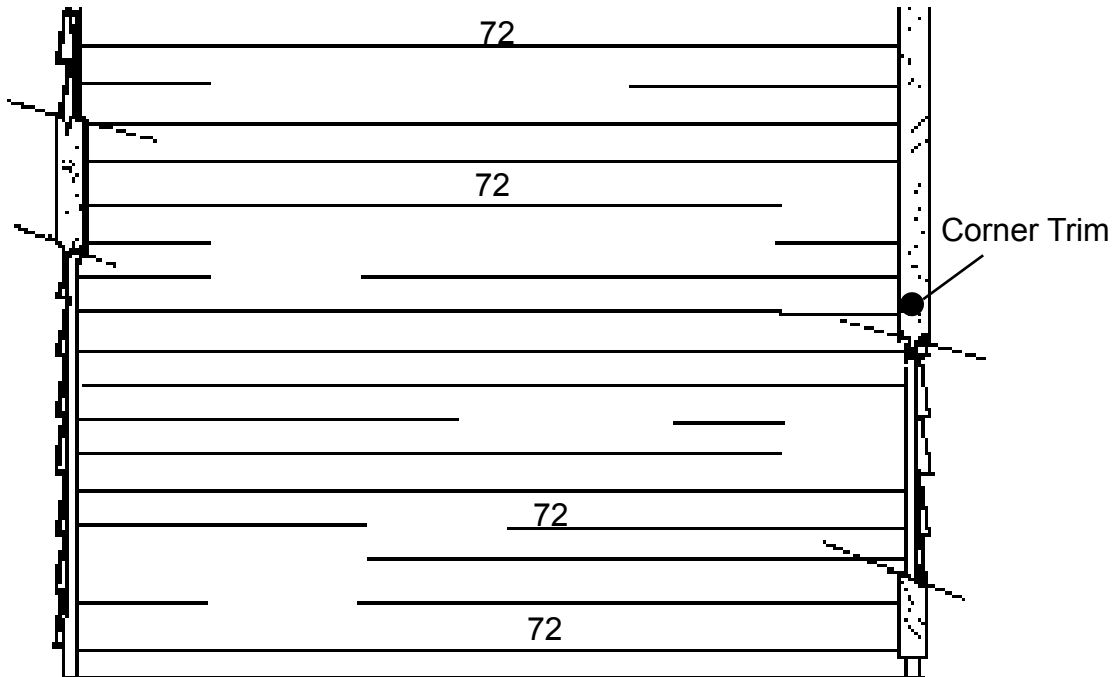
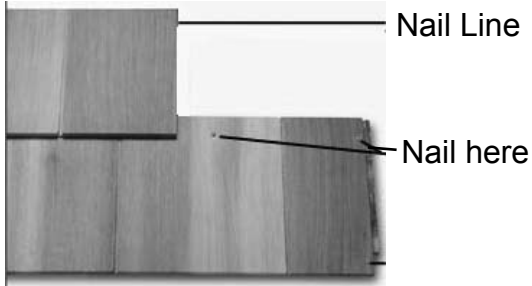


Star Cedar Sheds

4.5" Shingle Panel Layout

Sizes are nominal

LENGTH	QTY
24"	34
36"	14
72"	36
96"	18



Side

Star Cedar Sheds

APPLICATION OF ALTERNATIVE ROOFING PRODUCTS.

Your Star Cedar Shed kit comes with high quality western red cedar shingle panels to be used in the roofing process. Occasionally, customers are required to use alternative roofing products such as composition shingles. Should this be necessary, you will need to purchase additional materials as noted in the chart below. These additional materials will provide a solid roof deck, to which nearly any alternative roofing can be applied. Once you have the solid roof deck in place, please follow the application instructions provided with your alternative roofing product of choice.

Shed Size	Size	Quantity
8' X 6'	1" x 4" x 94"	12

Total square footage of your roof is: 80 sq. ft.

Please note: you will likely have to buy standard length pieces and cut them back to the lengths listed above.

Star Cedar Sheds

Step # 7 ROOF

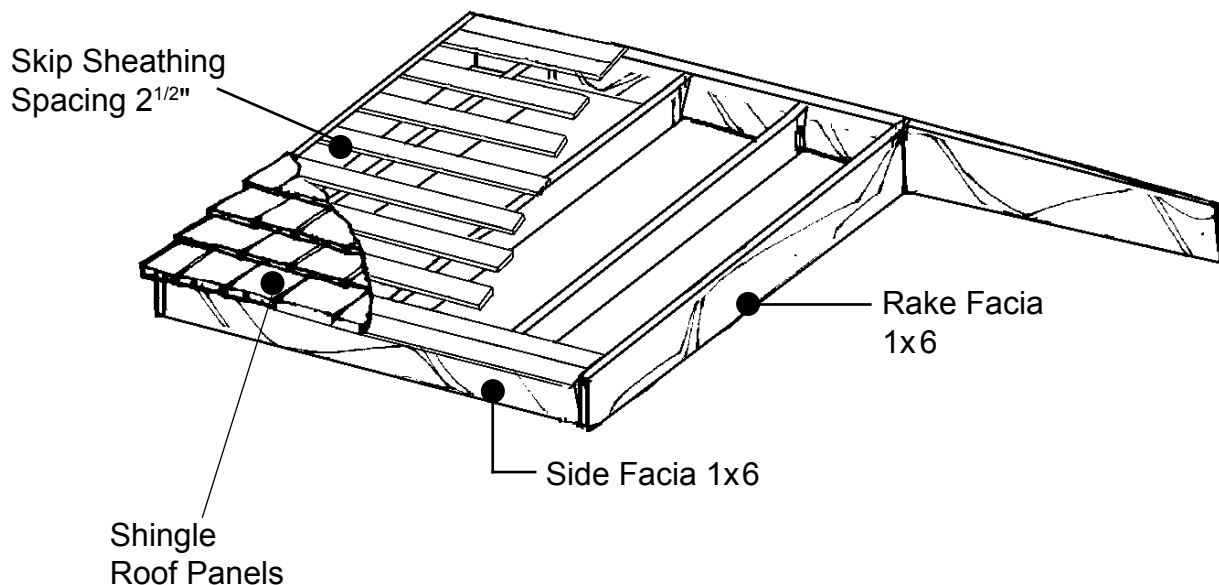
Side Facia

Start with the 1x6 side facia. Before nailing, check to see that it is the same length as the ridge pole. Trim it if necessary. Nail the facia to the ends of the rafters. The top of the facia should be 1" above the top of the rafters. The skip sheathing will line up with the top of the facia. The rough side should face out for the best appearance (See the detail drawing at the bottom).

Rake Facia

The rake facia will have to be trimmed to length. The plumb-cuts at each end are 22.5 degrees off of perpendicular. If you don't trust your measuring ability when it comes to the fine art of plumb-cutting, there is another way. Hold the board up in place with the top edge flush with the top of the skip sheathing. Then reach around the back at the ridgepole and run your pencil down the vertical joint. You'll have waste on both ends so don't chop off too much on your first cut. The second cut will be made after you nail it into place. With the rough side out and the top flush with the skip sheathing, place the cut end over half of the ridge pole. Nail it into place with two 8d nails.

Roof



Star Cedar Sheds

Step # 7 ROOF

Skip Sheathing

Lay all of your 1x4 skip sheathing in a neat stack on the ground with the narrow side up and the ends lined up. Measure in from one end the length of an overhang (11"). Then with your square draw a line across all the boards at once. All boards are now marked with the location of the end rafter. Be sure skip sheathing is hem/fir, **not cedar**.

Start at the bottom nailing each piece to each rafter with two 8d nails. The end will line up with the end of the rake facia. Nail the next piece butted up to the first, making sure that your marks are in line with the face of the first rafter. The remaining boards will be space 2 1/2" apart. Work your way to the top. Any extra boards should be used at the top. If the spacing is different at the top, not to worry. Repeat this nailing at the side facia and then at each piece of skip sheathing. Cut off the excess, flush with the outside of the rake facia. As a final touch, make a level cut at the bottom of the rake facia.

1x4 Skip Sheathing

Spacing 2^{1/2}"



Star Cedar Sheds

Roofing

The shingle panel roofing that you are about to install will provide your shed with long lasting good looks.

Felt Paper

The first step to finishing your roof is to lay the felt paper down. The felt paper is laid horizontal across the roof, starting at the bottom and over lapping each row a minimum of 3". Staple felt to 1x4 skip sheathing.

Shingle Roof Panels (skip this if you are using alternate roofing. Follow manufacturers directions.)

There are 20 roof panels marked 8A.

Lay the first roof panel so that the overhang of the shingle overlaps the top edge of the side facia and the plywood on the back side of the panel butts up to the edge of the side facia. Center the panel so that there is equal over hang on either end of the shed. Temporarily tack this first layer down then hand lay five courses of panels and check for squareness. If roof is out of square, correct by adjusting the first course.

Attach with 1^{1/4}" roofing nails at 1^{1/2}" to 1^{3/4}" from the top of the panel. Nail spacing should be every 12". Continue on up roof laying the next panel down with the overhang of the shingles overlapping the the previous panel. The plywood should butt up to the top edge of the previous panel. Do not nail on the outer edges of the roof panel where there is no plywood backing.

Finish off the ridge with the two cedar 1x4's nailed so that one overlaps the other.

ROOF PANELS



Shingle Roof Panels

Overhang
1 1/2"



1x4 Cedar Ridge Cap
Rough 1 Side

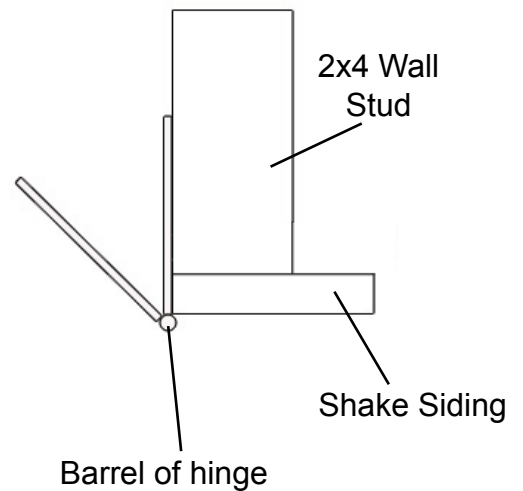
Rake Facia

Star Cedar Sheds

Step # 8 DOORS

Use a small piece of scrap wood as a shim to create a 1/4" space between the door and the floor. A similar space should be at the top as well. Once the door is level, the barrel of the hinge should be just past the cedar siding. Begin attaching hinge to exposed edge of stud with 1 1/4" screws.

Next, nailing the 1x2x36" cedar door stop to the top of the doorway in following manner. Swing the doors closed until they are flush with the wall above. Push the stop against the door, and screw it into place using the 1 1/4" screws. The idea here is to keep the door from swinging so far in that the hinge binds.



1x2x36" Cedar door stop

Star Cedar Sheds

Skirting

Nail 1 x 6 x 72" cedar to the front, back, 1x6x96" for sides below the last row of siding.

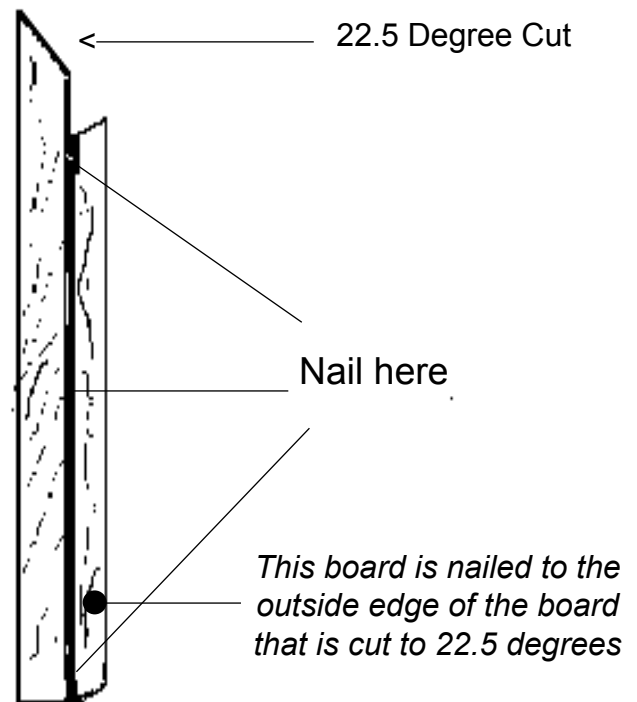
Corner Trim

The 1x4 cedar in your kit is for the corner trim. Cut an angle on one end of a piece to match the slope of the roof. Make sure that the rough side is facing out. Then measure down 4" from the short side and make a mark. Nail a second piece over the first with its' top at the mark. 5d shake nails spaced about a foot apart will do.

Fit your prefabricated corner trim over the corner of the shed to test for length. Mark the bottom about an inch below the siding. Then cut it to length. Nail it in place using 5d nails about a foot apart. Now that you've done one, do the rest. But a word of caution: the corners are handed. If you make four left corners, you'll only be able to use two of them. The example below is a right hand corner.

Finishing

If there's still light out you might want to run back to the store and pick up some paint or stain. A heavy bodied stain works best with rough sawn cedar. If you prefer to paint an oil base primer is recommended.



Thank you for choosing a Star Cedar Shed. Our aim is to have your shed building experience be a positive one. If you have any questions or comments please call us toll free at:

1.888.659.1832

HOURS:

8:00 AM - 4:30 PM PT

MONDAY-FRIDAY

OR E-MAIL

CUSTOMERSERVICE@STARLUMBERSHEDS.COM

Star Cedar Sheds

Product Survey

1

When did you purchase your 8 x 6 Premium Shake Shed?

- Less than 1 month
- 1-3 month
- More than 3 months

2

Please list the brands of Storage Sheds you have ever owned.

*

*

*

3

When shopping for your new Storage Shed, did you consider different brands or just the Star Lumber Cedar Shed.

- Considered many other brands
- Considered 1 or 2 other brands
- Considered the Star Lumber Shed only

What were the different brands you consider?

Star Cedar Sheds

4

When shopping for your new Storage Shed, how important were the following features?

4	3	2	1	N/A
Extremely Important	Important	Unimportant	Extremely Unimportant	

Quality

4	3	2	1	N/A
---	---	---	---	-----

Additional Comments

Size

4	3	2	1	N/A
---	---	---	---	-----

Additional Comments

Design

4	3	2	1	N/A
---	---	---	---	-----

Additional Comments

Durability

4	3	2	1	N/A
---	---	---	---	-----

Additional Comments

Star Cedar Sheds

Cost

4 3 2 1 N/A

Additional Comments

Functionality

4 3 2 1 N/A

Additional Comments

Availability

4 3 2 1 N/A

Additional Comments

Where Sold

4 3 2 1 N/A

Additional Comments

Ability to Stain or Paint to Match Home

4 3 2 1 N/A

Additional Comments

Star Cedar Sheds

5

Was there any other feature(s) that was important in your purchase decision?

6

What was the single most important feature to you when shopping for the product? Select one.

- Quality
- Size
- Design
- Durability
- Cost
- Functionality
- Availability
- Where sold
- Ability to match Home
- Other, please enter other important feature

7

Please rate Star Lumber 8 x 6 Premium Shake Shed on these same features.

4	3	2	1	N/A
Extremely Important	Important	Unimportant	Extremely Unimportant	

Quality

4	3	2	1	N/A
---	---	---	---	-----

Additional Comments

Star Cedar Sheds

Size

4 3 2 1 N/A

Additional Comments

Design

4 3 2 1 N/A

Additional Comments

Durability

4 3 2 1 N/A

Additional Comments

Cost

4 3 2 1 N/A

Additional Comments

Functionality

4 3 2 1 N/A

Additional Comments

Star Cedar Sheds

Availability

4

3

2

1

N/A

Additional Comments

Ability to Stain or Paint to Match Home

4

3

2

1

N/A

Additional Comments

8

Rate your **SATISFACTION** with the performance of your Cedar 8 x 6 Premium Shake Shed.

Extremely
Satisfied

Somewhat
Satisfied

Somewhat
Dissatisfied

Extremely
Dissatisfied

4

3

2

1

9

Rate your overall **SATISFACTION** with your Star Lumber Cedar 8 x 6 Premium Shake Shed.

Extremely
Satisfied

Somewhat
Satisfied

Somewhat
Dissatisfied

Extremely
Dissatisfied

4

3

2

1

10

If you could make one change to Star Lumber Cedar 8 x 6 Premium Shake Shed what would it be?

Star Cedar Sheds

11

Would you recommend Star Lumber Cedar Storage Shed to a friend looking for a Storage Shed?

- Definitely would recommend
- Would recommend with reservations
- Would not recommend
- Other, please specify

Mail To: Star Lumber Sheds
PO Box 400
Winlock, WA 98596



Attention Professional Contractors

We constantly receive requests from customers, for qualified professional contractors, who can build Star Cedar shed kits. In response to those requests, and to help establish relationships with trusted professionals, we have developed a referral program. We are always interested in expanding our listing of recommended contractors.

If you are actively involved in home improvement projects such as the installation of storage sheds, are interested in building more Star CEDAR sheds, and are a licensed and bonded professional, then we would love to hear from you.

Please complete the following and submit it to us via one of the following three methods:

1. E-mail us at customerservice@starlumbersheds.com,
2. Fax us at 360-658-6292
3. Write to us at: Star Cedar Sheds, 1200 NW Kerron St, Winlock, WA, 98596

Company Name (full)	_____
Contractors License #	_____
Contact Name	_____
Street Address	_____
City	_____
State	_____
Zip Code	_____
Phone	_____
Fax	_____
Cell #	_____
E-mail	_____
Website	_____