

INSTRUCTIONS: HOW TO APPLY **CRACK•STIX® Hot Applied Crack & Joint Sealant**

GETTING READY...

CRACK•STIX® "hot applied" Crack & Joint Sealant is simple to use and yields the same professional results that you would expect from contractors. . . at a fraction of the cost. You can permanently repair cracks & joints in a few easy steps using only three common tools.

NOTE: Cracks & joints must be dry. **CRACK•STIX®** is designed for repairs only up to 3/4" wide.

TOOLS...

You will only need the following tools: a small whisk or house broom, a phillips or regular head screwdriver & a small, propane torch (self-igniting recommended, but not required). You may want to purchase a torch extender as well.

BEFORE YOU START...

Read & follow instructions on the package and the tool/torch manufacturer's instructions, guidelines and warnings. We recommend safety glasses, gloves, a long sleeve shirt, long pants, proper footwear & protective head wear be used when applying **CRACK•STIX®** Crack & Joint Sealant.

PREPARING THE SURFACE...

It is important that the surface (crack & joints) be prepared properly prior to applying the **CRACK•STIX®**. Using a screwdriver, clean & remove all plants/grass/roots, sand, dirt & other debris from inside the cracks & joints (dig down, scratch loose & sweep it out, using a back & forth motion along the length of the area to be repaired). It is best to clean only two or three feet at a time. Make sure the crack/joints & pavement surface are swept CLEAN & are totally DRY! **Important:** Do not apply in wet cracks or where frost, snow or ice is present. Do not apply if the ground temperature is below 40 degrees. The "hot applied" **CRACK•STIX®** Sealant will not adhere/bond/seal to dirty or wet pavement.

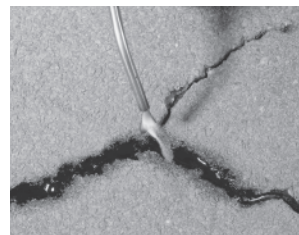
FILLING & SEALING...

IMPORTANT: The sealant is designed to be applied 1/16 - 1/8" below the pavement surface. **IN IT, NOT ON IT.** Cut the appropriate length of **CRACK•STIX®** for the crack/joint you want to seal (To cut, push a screwdriver through the stix onto the pavement surface). What if the crack is narrower than the **CRACK•STIX®**? No problem! You can either splice the **CRACK•STIX®** with a razor blade or if the **CRACK•STIX®** have been outside in the sun and are warm just stretch them! For large cracks you can double over the **CRACK•STIX®**.

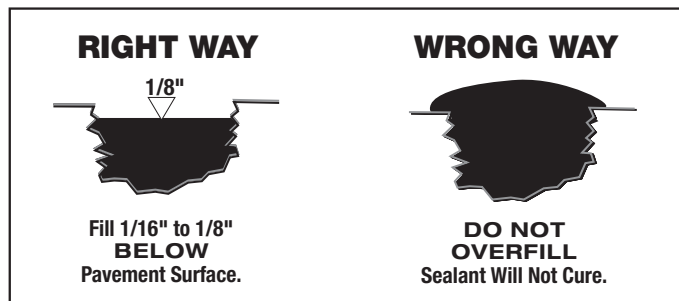


Take the cut **CRACK•STIX®** and push it down into the crack/joint inch by inch, until it is approximately 1/8" from the top of the surrounding pavement (slight recess for expansion & contraction). Light the propane torch & adjust the total flame until it is about 3-4" long & the bright blue tip of the flame is 1" long. Do not touch the flame, it is extremely hot & can cause severe burns (follow torch instructions). Hold the flame at a 45 degree

angle 1-1/2" from **CRACK•STIX®** & begin heating. The "Melt-away" plastic wrapper will liquify immediately, continue to move the flame back & forth, side to side, in a slow even manner, heating about one foot at a time. The stix will start to liquify immediately but you should continue heating for about 1 - 2 minutes. The type of torch, along with wind, temperature conditions, and thickness of stix will affect melting time. Traffic Ready in approximately 20 minutes. **NOTE: For concrete to asphalt or concrete to concrete repairs**, Portland concrete cement may contain trapped moisture which can cause "Popping/Spalling" when heated. To minimize this condition, dry the concrete prior to applying **CRACK•STIX®**, by "PRE-WARMING" the surface. In a slow side to side motion, move the torch flame back and forth approximately 12" from the concrete until it is completely dry (about 30-45 seconds... **DO NOT OVERHEAT ADJACENT PAVEMENT**). Always wear protective gear...in accordance with instructions.



If you have "burnt" the edges of the concrete, you can either sweep up the residue dust or you may need to rinse with soap and scrub with a stiff nylon brush.



CAUTION:

Do not touch liquified sealant, which is very hot, until it has completely cooled 5-20 minutes. While it is cooling, you can continue on with your repairs to other cracks/joints. Once filling/sealing & cooling are completed, check your work. If you did not apply enough sealant, or used the wrong size, correct by adding more **CRACK•STIX®**.

NOTE: **CRACK•STIX®** can be reliquified at any future time if necessary to rebond or reseal the sealant to the sidewalls. Follow the original **CRACK•STIX®** instructions.

KEEP AWAY FROM CHILDREN DO NOT INGEST

If accidentally swallowed, call physician immediately.

STORAGE RECOMMENDATION...

CRACK•STIX® have an excellent shelf life...Keep in a dry, cool place between 35-70 degrees.

0 VOC's