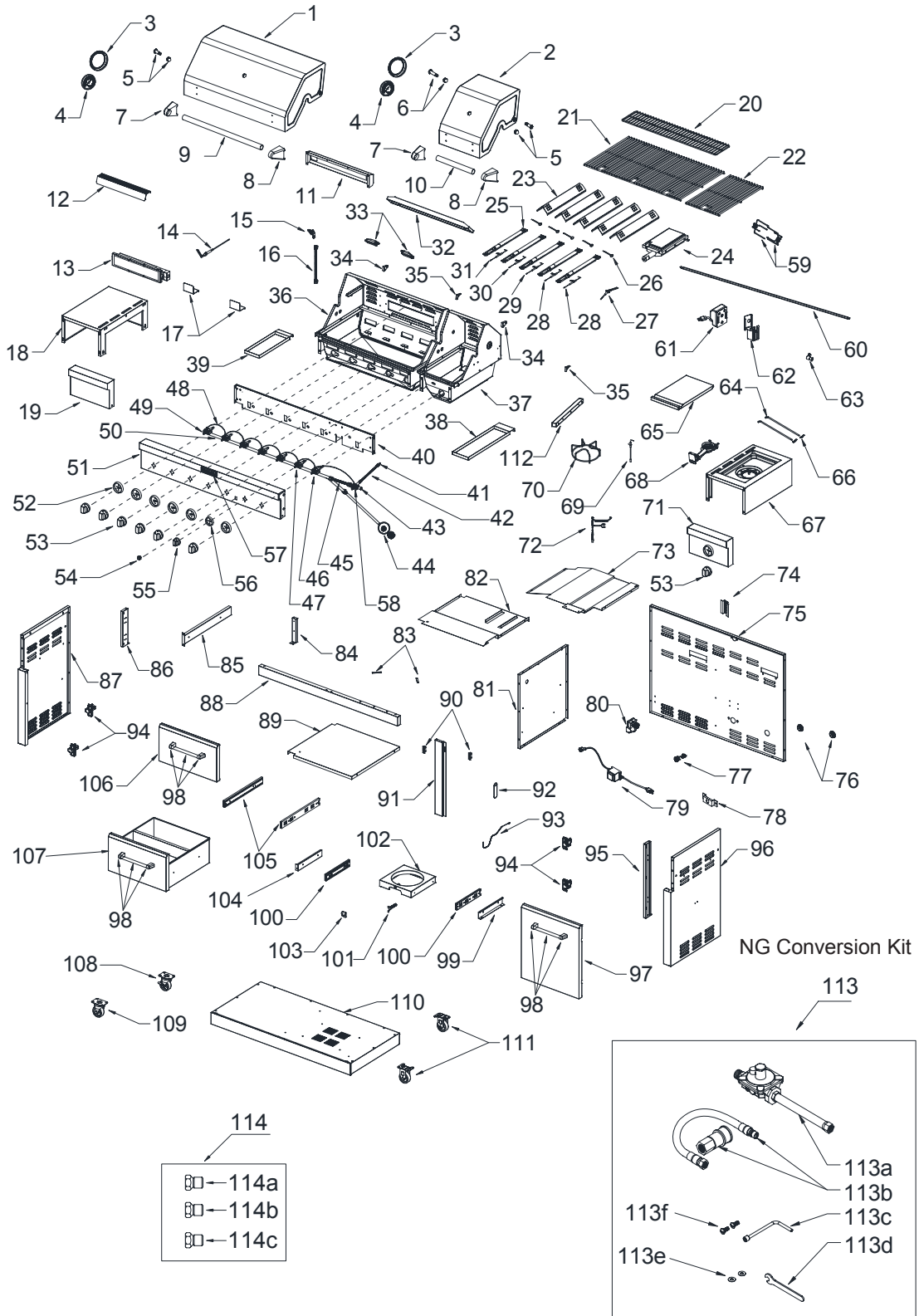


Replacement Parts



Part List

| Part Number | Part (description) | Warranty Coverage | Quantity | Part Number | Part description) | Warranty Coverage | Quantity |
|-------------|--------------------------------------|-------------------|----------|-------------|-------------------------------------|-------------------|----------|
| 1 | Main lid | 3 | 1 | 30 | Main burner igniter wire C | 1 | 1 |
| 2 | Sear burner main lid | 3 | 1 | 31 | Main burner igniter wire D | 1 | 1 |
| 3 | Temperature gauge seat | 1 | 2 | 32 | Lamp case | 1 | 1 |
| 4 | Temperature gauge | 1 | 2 | 33 | Lamp | 1 | 2 |
| 5 | Main lid screw A | 1 | 2 | 34 | Main lid bracket seat, left | 3 | 2 |
| 6 | Main lid screw B | 1 | 1 | 35 | Main lid bracket seat, right | 3 | 2 |
| 7 | Main lid handle seat, left | 1 | 2 | 36 | Main burner bowl assembly | Non-replaceable | 1 |
| 8 | Main lid handle seat, right | 1 | 2 | 37 | Sear burner bowl assembly | Non-replaceable | 1 |
| 9 | Main lid handle tube | 1 | 1 | 38 | Sear burner grease tray | 3 | 1 |
| 10 | Sear main lid handle tube | 1 | 1 | 39 | Main burner grease tray | 3 | 1 |
| 11 | Rear baffle | 1 | 1 | 40 | Front baffle | 1 | 1 |
| 12 | Rear burner heat shield | 3 | 1 | 41 | Side burner orifice brass connector | 1 | 1 |
| 13 | Rear burner | 1 | 1 | 42 | Side burner flex gas line A | 1 | 1 |
| 14 | Rear burner ignition wire | 1 | 1 | 43 | Side manifold | 1 | 1 |
| 15 | Rear burner orifice with brass elbow | 1 | 1 | 44 | LP regulator | 1 | 1 |
| 16 | Rear burner flex gas line | 1 | 1 | 45 | Side Burner flex gas line B | 1 | 1 |
| 17 | Rotisserie burner igniter bracket | 3 | 2 | 46 | Sear burner gas valve | 1 | 1 |
| 18 | Side shelf, left | 3 | 1 | 47 | Rear burner gas valve | 1 | 1 |
| 19 | Side shelf front panel, left | 3 | 1 | 48 | Igniter junction wire | 1 | 1 |
| 20 | Warming rack | 3 | 1 | 49 | Main gas valve | 1 | 5 |
| 21 | Cooking grid with hole | 3 | 3 | 50 | Main manifold | 1 | 1 |
| 22 | Searing main burner cooking grid | 3 | 1 | 51 | Main control panel | 3 | 1 |
| 23 | Flame tamer | 3 | 5 | 52 | Bezel | 1 | 6 |
| 24 | Sear burner | 1 | 1 | 53 | Knob | 1 | 6 |
| 25 | Main burner | 10 | 5 | 54 | Light switch | 1 | 1 |
| 26 | Burner pin assembly | 1 | 5 | 55 | Rear burner knob | 1 | 1 |
| 27 | Sear burner ignition wire | 1 | 1 | 56 | Rear burner bezel | 1 | 1 |
| 28 | Main burner igniter wire A | 1 | 2 | 57 | Logo | 1 | 1 |
| 29 | Main burner igniter wire B | 1 | 1 | 58 | Side burner gas valve | 1 | 1 |

Firebox connect plate

| Part Number | Part (description) | Warranty Coverage | Quantity | Part Number | Part description) | Warranty Coverage | Quantity |
|-------------|---|-------------------|----------|-------------|---|--|----------|
| 59 | Spit fork | 1 | 2 | 94 | Door hinge | 1 | 4 |
| 60 | Spit rod | 1 | 1 | 95 | Door hinge support bracket | 1 | 1 |
| 61 | Rotisserie motor | 1 | 1 | 96 | Side panel, right | 1 | 1 |
| 62 | Rotisserie motor bracket | 3 | 1 | 97 | Door | 3 | 1 |
| 63 | Shaft Collar | 1 | 1 | 98 | Door Handle | 1 | 3 |
| 64 | Side burner lid hinge rod | 1 | 2 | 99 | Gas tank tray slide bracket, right | 1 | 1 |
| 65 | Side burner lid | 3 | 1 | 100 | Gas tank tray slide | 1 | 2 |
| 66 | Side burner lid hinge rod pin | 1 | 2 | 101 | Tank bolt | 1 | 1 |
| 67 | Side burner bowl assembly | 3 | 1 | 102 | Gas tank tray | 1 | 1 |
| 68 | Side burner | 1 | 1 | 103 | Gas tank tray block piece | 1 | 1 |
| 69 | Side burner ignition wire | 1 | 1 | 104 | Gas tank tray slide bracket, left | 1 | 1 |
| 70 | Side burner cooking grid | 3 | 1 | 105 | Drawer slide | 1 | 2 |
| 71 | Side burner front panel | 3 | 1 | 106 | Small door | 3 | 1 |
| 72 | Lamp cord | 1 | 1 | 107 | Drawer | 3 | 1 |
| 73 | Heat shield, right | 1 | 1 | 108 | Swivel caster with brake | 1 | 1 |
| 74 | Igniter wire cover A | 1 | 1 | 109 | Swivel caster | 1 | 1 |
| 75 | Rear panel | 1 | 1 | 110 | Bottom panel | 1 | 1 |
| 76 | Rubber grommet | 1 | 2 | 111 | Caster | 1 | 2 |
| 77 | Power cord buckle | 1 | 1 | 112 | Firebox connect plate | 1 | 1 |
| 78 | Igniter wire cover B | 1 | 1 | 113 | NG conversion Kit | NG conversion kit sold separately as a set | |
| 79 | Transformer | 1 | 1 | 113a | NG regulator assembly for NG unit | 1 | |
| 80 | Electronic igniter modular | 1 | 1 | 113b | NG Gas Hose with Quick Connector assembly for NG unit | 1 | |
| 81 | Clapboard B | 1 | 1 | 113c | 6mm Nut Driver | 1 | |
| 82 | Heat shield, left | 1 | 1 | 113d | 6mm Wrench | 1 | |
| 83 | Door hinge support bracket strengthen piece | 1 | 2 | 113e | Flat Washer | 2 | |
| 84 | Firebox support piece A | 3 | 1 | 113f | Truss Head Screw with lock | 2 | |
| 85 | Drawer support piece | 1 | 1 | 114 | NG orifice pack | 1 | |
| 86 | Small door support piece | 1 | 1 | 114a | Side burner NG orifice (1.7mm) | 1 | |
| 87 | Side panel, left | 1 | 1 | 114b | Rear burner NG orifice (1.84mm) | 1 | |
| 88 | Cart frame | 1 | 1 | 114c | Sear burner NG orifice (1.98mm) | 1 | |
| 89 | Clapboard A | 1 | 1 | | Preassembly hardware pack | 1 | |
| 90 | Door magnet | 1 | 2 | | PVC cover | 1 | |
| 91 | Cart frame, middle | 3 | 1 | | Manual | 1 | |
| 92 | Lighting rod cover | 1 | 1 | | | | |
| 93 | Lighting Rod | 1 | 1 | | | | |