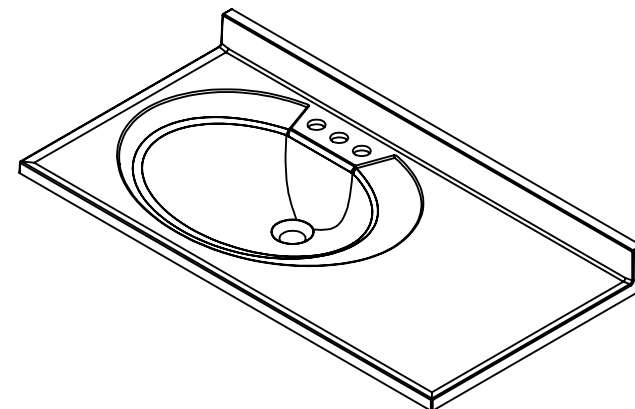
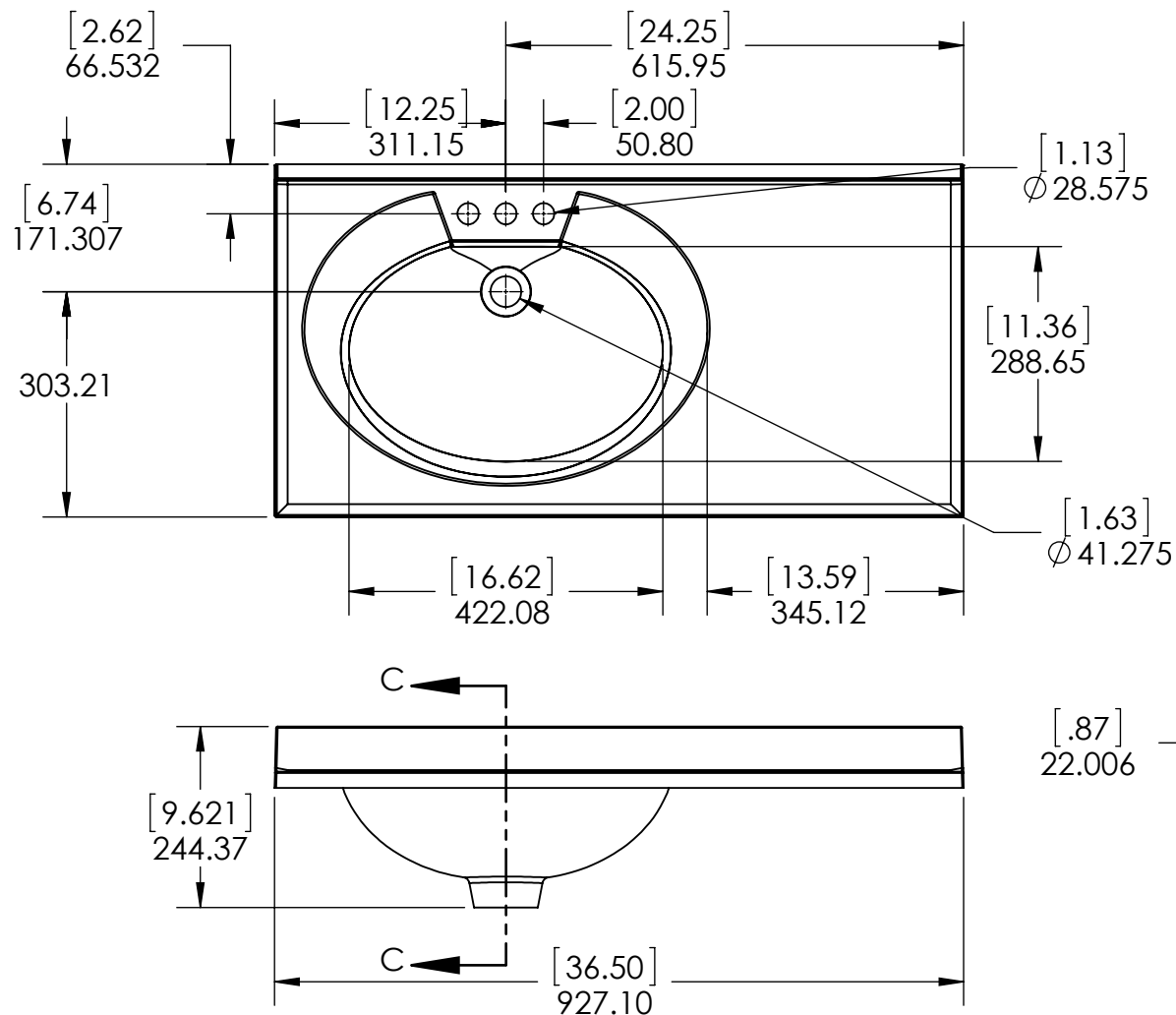


DRAWING TYPE	ITEM ID	ITEM DESCRIPTION	TECHNOLOGIES	DRAWING STATUS
Finish Good	595194	Newport Blanco 37x19 Offset LH	Solid Color	Design Process
Finish Good	595200	Newport CP Beach 37x19 Offset LH	Color Point	Design Process
Finish Good	595244	Top, Newport, CP 37x19 Offset LH - Maui	Color Point	Design Process



Estimated Weight: 15.32 kg

PROPRIETARY AND CONFIDENTIAL
THE INFORMATION CONTAINED IN THIS DRAWING IS THE
SOLE PROPERTY OF WOODCRAFTERS. ANY
REPRODUCTION IN PART OR AS A WHOLE WITHOUT THE
WRITTEN PERMISSION OF WOODCRAFTERS IS PROHIBITED.

UNLESS OTHERWISE SPECIFIED
DIMENSIONS ARE IN MM.
AND (INCHES)
TOLERANCES ARE
+ 0.125 [3.175] - 0.125 [-3.175]
SCALE:1:10

	NAME	DATE
DRAWN	J.Martinez	5/16/16
CHECKED	R. Rubio	5/16/16
ENG APPR.	V. Sanchez	5/16/16
MFG APPR.	C. Leal	5/16/16

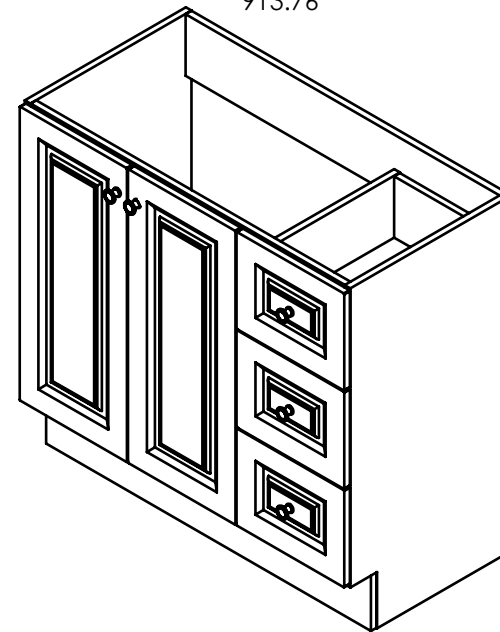
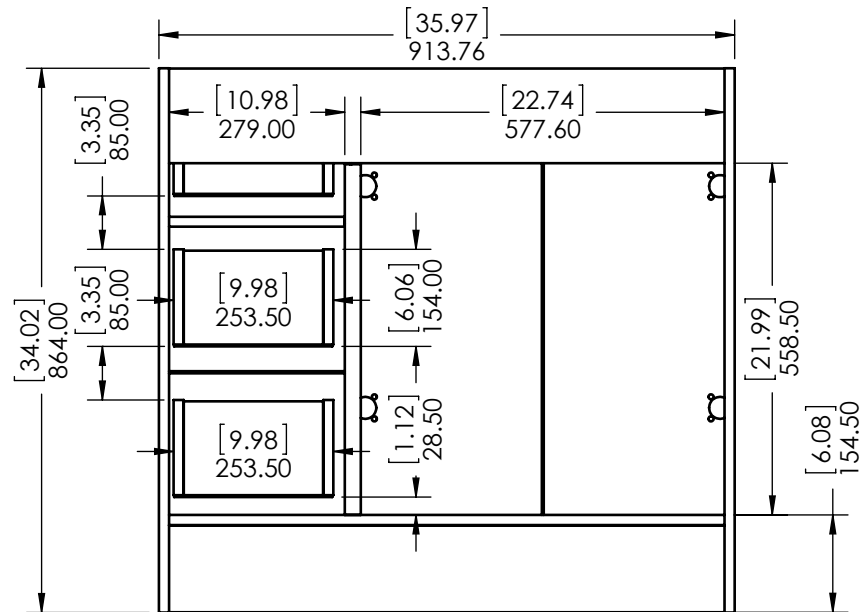
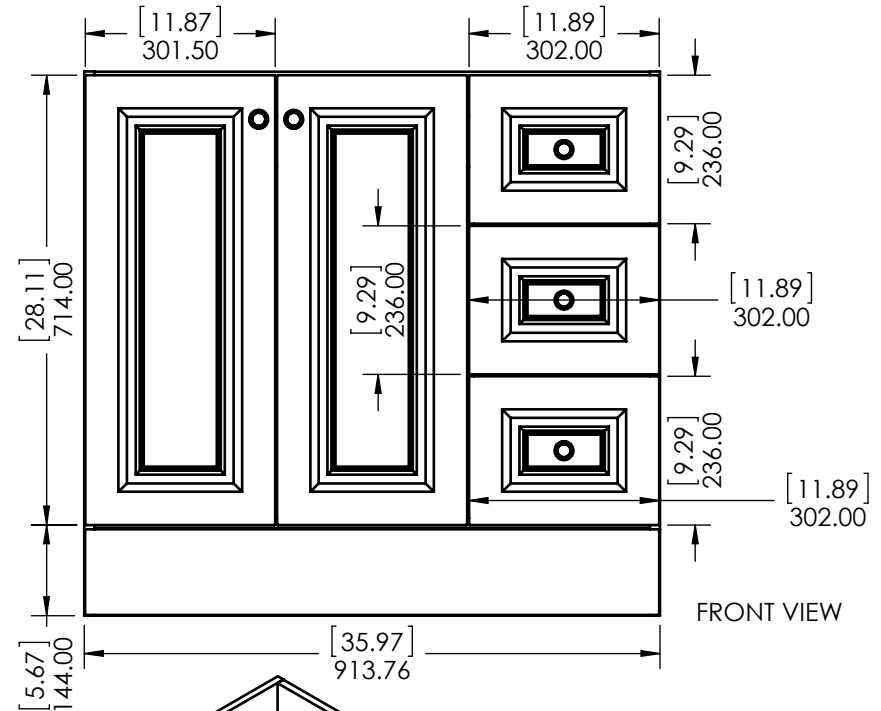
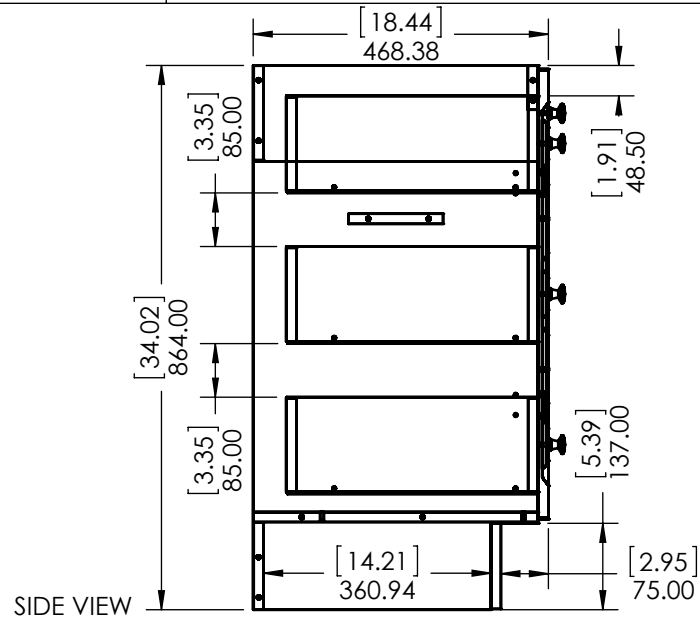
Wood Crafters

SIZE DWG. NO.
A Newport top 37x19 offset

SHEET 1 OF 1
REV: 0

ITEM ID	DESCRIPTION
NW36P3-D	Northwood 36x18 Side Drawer w/Top and Mirror - Dark Cherry

REV	ECO#	DESCRIPTION	REV'D BY DATE	CHK'D BY DATE	APRV'D BY DATE
0		New Release	IASV 4/14/16	IASV 4/14/16	IASV 4/14/16



BACK VIEW

PROPRIETARY AND CONFIDENTIAL
THE INFORMATION CONTAINED IN THIS DRAWING IS THE SOLE PROPERTY OF WOODCRAFTERS HOME PRODUCTS L.L.C. ANY REPRODUCTION IN PART OR AS A WHOLE WITHOUT THE WRITTEN PERMISSION OF WOODCRAFTERS HOME PRODUCTS L.L.C. IS PROHIBITED.

UNLESS OTHERWISE SPECIFIED
DIMENSIONS ARE IN mm
and [inches]
AND TOLERANCES ARE
+/- 1.0 [0.04]

DRAWN BY:	IASV	4/14/16
CHECKED BY:	IASV	4/14/16
APPROVED BY:	IASV	4/14/16
DO NOT SCALE DRAWING	SCALE: 1:10	SIZE: A

Wood Crafters

TITLE:	NORTHWOOD 36" ASSEMBLY
PART NO:	PAGE 1 OF 1
REV:	0