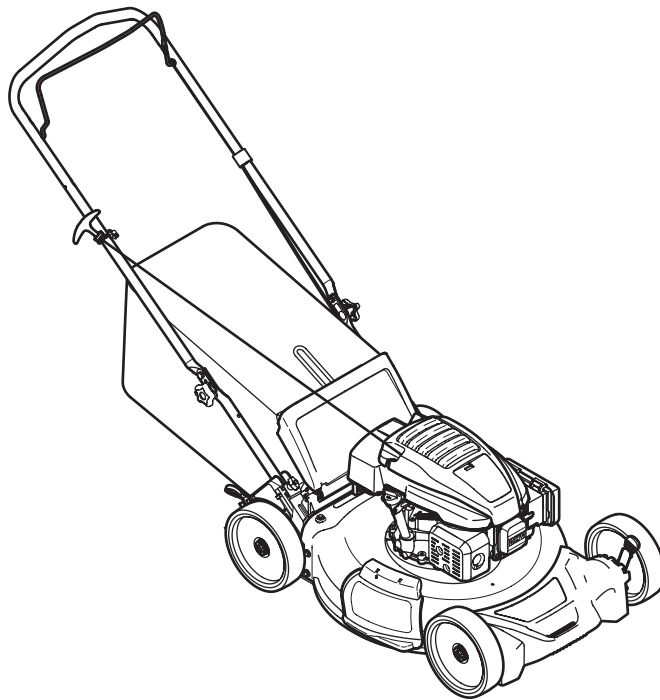


---

# *Cub Cadet*<sup>®</sup>

## ILLUSTRATED PARTS MANUAL



### Push and Self-Propelled Mowers

---

CUB CADET LLC, P.O. BOX 361131 CLEVELAND, OHIO 44136-0019

---

# To The Owner

## Thank You

Thank you for purchasing a Cub Cadet Lawn Mower. It was carefully engineered to provide excellent performance when properly operated and maintained.

All information in this manual is relative to the most recent product information available at the time of printing. Please be aware that this Illustrated Part's Manual may cover a range of product specifications for various models.

Components listed and/or illustrated in this manual may not be applicable to all models. We reserve the right to change product specifications, designs and equipment without notice and without incurring obligation.

Throughout this manual, all references to *right* (RH) and *left* (LH) are observed from the operating position.

---

## Table of Contents

[Model SC 100 \(11A-A92\) ..... 4](#)  
[Model SC 500 HW \(12ABD22\) ..... 6](#)  
[Model SC 500 EZ \(12ACC6S\) ..... 8](#)  
[Model SC 500 EZ \(12ACC6S\) ..... 10](#)  
[Model SC 500 Z \(12ABC62\) ..... 12](#)  
[Labels ..... 14](#)  
[Engine Model 5X65RU ..... 16](#)

---

## Record Product Information

To ease in ordering replacement parts, please locate the model plate on the equipment and record the information in the provided area to the right. You can locate the model plate by looking beneath the seat.

### MODEL NUMBER

--	--	--	--	--	--	--	--	--	--	--	--

### SERIAL NUMBER

--	--	--	--	--	--	--	--	--	--	--	--

---

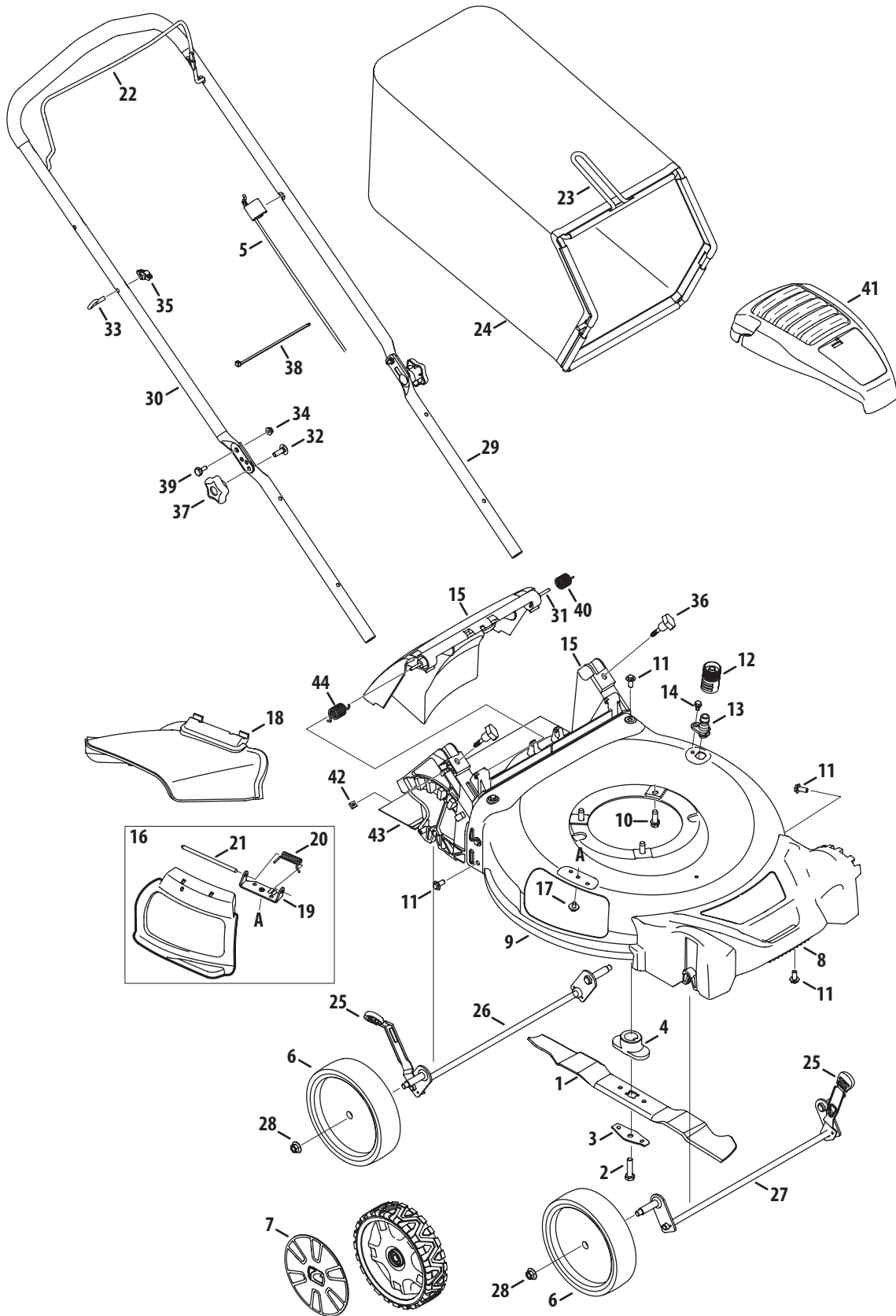
## Painted Parts

When ordering painted service parts, a four digit color suffix must be added to the part number (e.g. 783-XXXX-0637). Please refer to the table below for current color codes:

0637	Black	0685	Blue (Cub Cadet)
4021	Yellow (Cub Cadet)	0691	Black Jack (Cub Cadet Commercial)
0499	Beige (Cub Cadet)		

**This page left intentionally blank.**

# Model SC 100 (11A-A92)

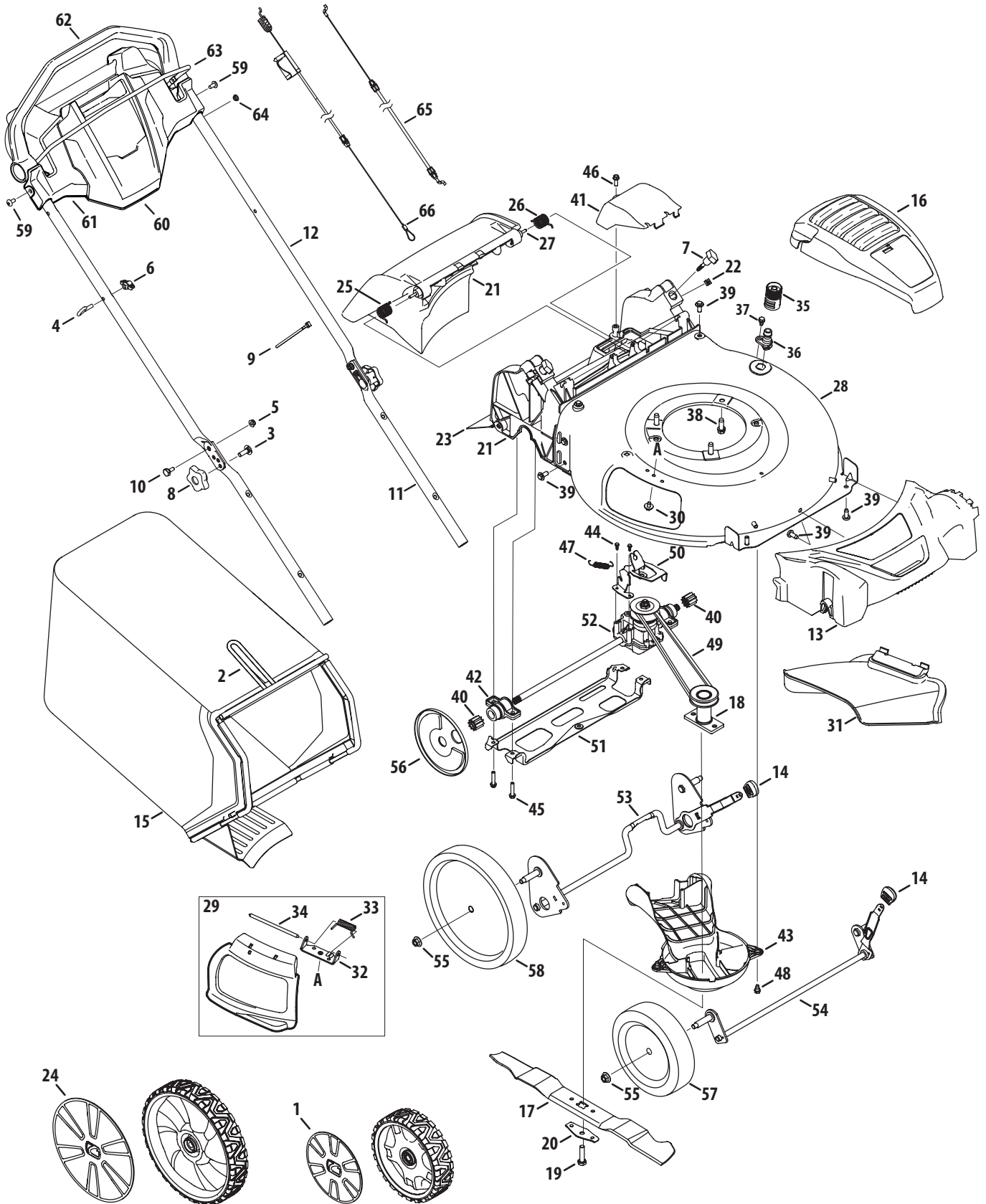


## Model SC 100 (11A-A92)

Ref No.	Part Number	Description
1	942-0741A	Mulching Blade
2	710-1044	Screw, 3/8-24 x 1.50
3	736-0524B	Blade Bell Support
4	748-04096	Blade Adapter
5	946-04703A	Control Cable
6	634-04659	Wheel, 8 x2
7	731-08570	Hubcap
8	731-09258	Front Cover
9	787-01874B	21" Deck
10	710-04683A	Screw, tt, 3/8-16 x 1.00
11	710-04995A	Screw, 5/16-14 x .750
12	921-04041	Water Nozzle Adapter
13	731-07487	Water Nozzle
14	738-04278	Scr., Shldr., 1/4-20 x .50
15	631-04369A	Rear Discharge Door Assembly
16	987-02516A	Mulch Plug (Incl. 19-21)
17	710-05073	Screw
18	731-07131	Side Discharge Chute
19	787-01779	Chute Deflector Bracket
20	732-1014C	Torsion Spring
21	747-0710A	Hinge Pin
22	931-05119	Blade Control

Ref No.	Part Number	Description
23	647-04271	Grass Catcher Frame
24	764-04082A	Grass Bag
25	720-05014	Adjustment Knob
26	911-04142A	Rear Axle Assembly
27	911-05022	Front Axle Assembly
28	712-04217	Flange Lock Nut, 3/8-16
29	749-04608A	Lower Handle
30	749-04682A	Upper Handle
31	747-05183	Pivot Rod
32	710-04998	Carriage Screw ,5/16-18
33	710-1205	Rope Guide
34	712-04064	Nut, Flange Lock, 1/4-20
35	720-0279	Knob
36	720-05066	Wing Nut
37	720-05009	Star Knob
38	725-0157	Cable Tie
39	738-04419A	Shdr. Screw, .375 x .126 x 1/4-20
40	732-05062A	Torsion Spring - LH
41	731-09094A	Engine Shroud
42	712-04222	Nut, Sq., 1/4-20
43	731-07203	Trail Shield
44	732-05061A	Torsion Spring - RH

# Model SC 500 HW (12ABD22)

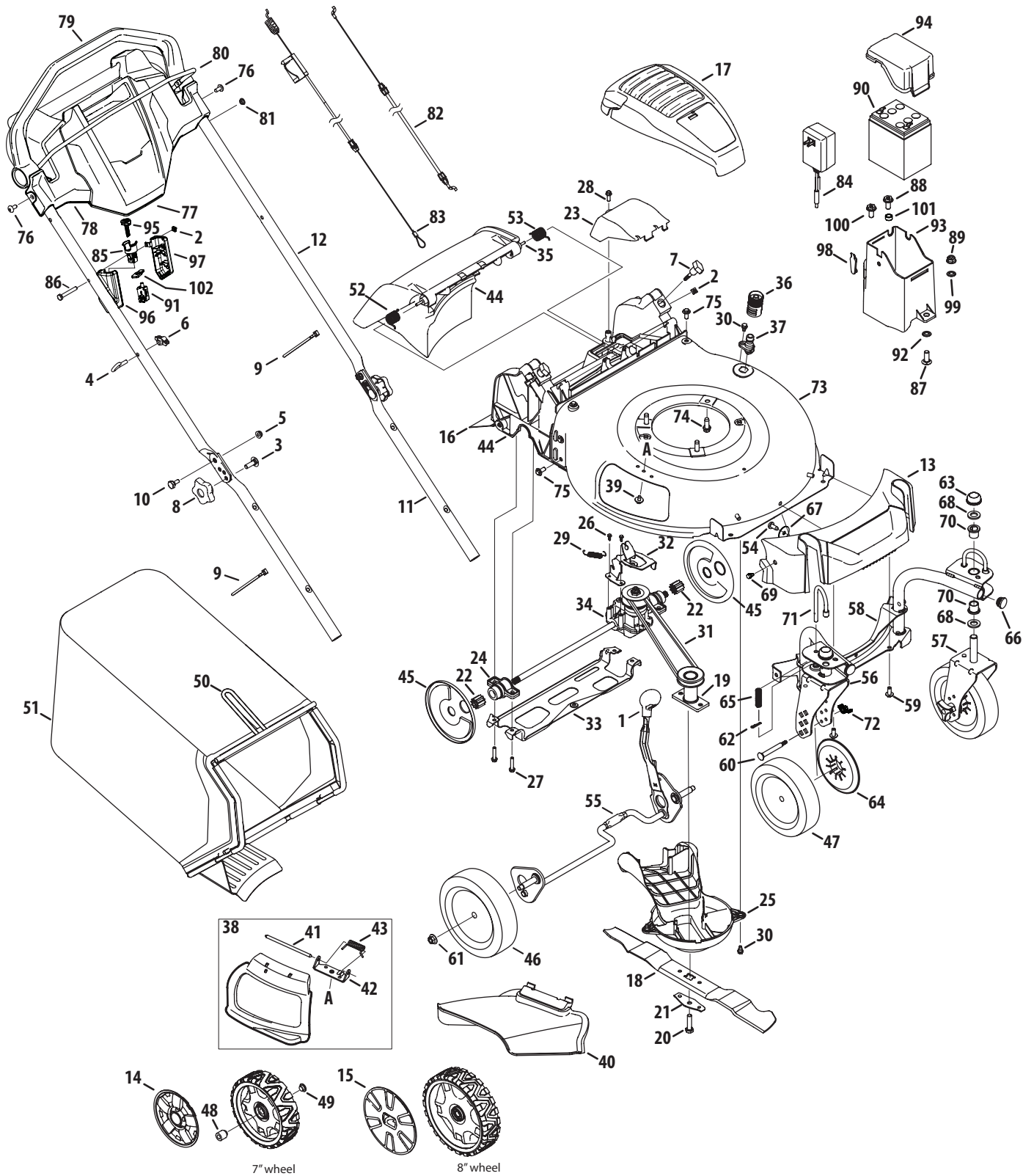


## Model SC 500 HW (12ABD22)

Ref No.	Part Number	Description
1	731-08570	Hubcap, 8"
2	747-05362A	Grass Catcher Frame
3	710-04998	Carriage Screw ,5/16-18
4	710-1205	Rope Guide
5	712-04064	Nut, Flange Lock, 1/4-20
6	720-0279	Knob
7	720-05066	Wing Nut
8	720-05009	Star Knob
9	725-0157	Cable Tie
10	738-04419A	Shdr. Screw, .375 x .126 x 1/4-20
11	749-04608A	Lower Handle
12	749-05084	Upper Handle
13	731-09258	Front Cover
14	720-05014	Adjustment Knob
15	964-05005	Grass Bag
16	731-09094A	Engine Shroud
17	942-0741A	Mulching Blade
18	687-02220	Blade Adapter
19	710-1044	Screw, 3/8-24 x 1.50
20	736-0524B	Blade Bell Support
21	631-04553A	Rear Discharge Door Assembly
22	712-04222	Nut, Sq., 1/4-20
23	731-07203	Trail Shield
24	731-08571	Hubcap, 11"
25	732-05061A	Torsion Spring - RH
26	732-05062A	Torsion Spring - LH
27	747-05183	Pivot Rod
28	787-02002A	21" Deck
29	987-02516A	Mulch Plug (Incl. 32-34)
30	710-05073	Screw
31	731-07131	Side Discharge Chute
32	787-01779	Chute Deflector Bracket
33	732-1014C	Torsion Spring

Ref No.	Part Number	Description
34	747-0710A	Hinge Pin
35	921-04041	Water Nozzle Adapter
36	731-07487	Water Nozzle
37	738-04278	Scr., Shldr., 1/4-20 x .50
38	710-04683A	Screw, tt, 3/8-16 x 1.00
39	710-05425A	Screw, 5/16-14 x .750
40	917-04849	Spur Gear, 9T
41	731-08175	Transmission Cover
42	631-04501A	Bearing Assembly
43	631-04512C	Engine Baffle
44	710-04374	Screw, Hex Washer, .159 x .43
45	710-04774	Screw, 1/4-15 x 1.25
46	710-0895	Screw, 1/4-15 x .750
47	732-05150	Exten. Spring, 2.405
48	738-04278	Scr., Shldr., 1/4-20 x .50
49	954-04282	V-Belt
50	787-01868A	Transmission Bracket
51	787-01915A	Rear Support Bracket
52	918-07000	Transmission Assembly
53	911-05029	Rear Axle Assembly
54	911-05022	Front Axle Assembly
55	712-04217	Flange Lock Nut, 3/8-16
56	731-07731C	Wheel Dust Cover
57	634-04665	Front Wheel, 8 x2
58	934-04699	Rear Wheel, 11 x 2
59	710-1017	Screw, 1/4-14 x .625
60	931-09863	Trim Console
61	931-09891	handle Console
62	731-09730	Drive Handle
63	747-06338	Blade Control
64	748-05047	Shoulder Spacer, .18 x .315 x .09
65	946-05105	Control Cable
66	946-05121	Drive Cable

# Model SC 500 EZ (12ACC6S)





## Model SC 500 EZ (12ACC6S)

Ref No.	Part Number	Description
1	720-05025	Adjustment Knob
2	712-04222	Nut, Sq., 1/4-20
3	710-04998	Carriage Screw ,5/16-18
4	710-1205	Rope Guide
5	712-04064	Nut, Flange Lock, 1/4-20
6	720-0279	Knob
7	720-05066	Wing Nut
8	720-05009	Star Knob
9	725-0157	Cable Tie
10	738-04419A	Shdr. Screw, .375 x .126 x 1/4-20
11	749-04608A	Lower Handle
12	749-05084	Upper Handle
13	731-09621	Front Cover
14	731-09360	Hubcap, 7"
15	731-08570	Hubcap, 8"
16	731-07203	Trail Shield
17	731-09094A	Engine Shroud
18	942-0741A	Mulching Blade
19	687-02220	Blade Adapter
20	710-1044	Screw, 3/8-24 x 1.50
21	736-0524B	Blade Bell Support
22	917-04852	Spur Gear, 10T
23	731-08175	Transmission Cover
24	631-04501A	Bearing Assembly
25	631-04512C	Engine Baffle
26	710-04374	Screw, Hex Washer, .159 x .43
27	710-04774	Screw, 1/4-15 x 1.25
28	710-0895	Screw, 1/4-15 x .750
29	732-05150	Exten. Spring, 2.405
30	738-04278	Scr., Shldr., 1/4-20 x .50
31	954-04282	V-Belt
32	787-01868A	Transmission Bracket
33	787-01915A	Rear Support Bracket
34	918-07000	Transmission Assembly
35	747-05183	Pivot Rod
36	921-04041	Water Nozzle Adapter
37	731-07487	Water Nozzle
38	987-02516A	Mulch Plug (Incl. 41-43)
39	710-05073	Screw
40	731-07131	Side Discharge Chute

Ref No.	Part Number	Description
41	747-0710A	Hinge Pin
42	787-01779	Chute Deflector Bracket
43	732-1014C	Torsion Spring
44	631-04553A	Rear Discharge Door Assembly
45	731-07795	Wheel Dust Cover
46	934-04714	Rear Wheel, 8 x 2
47	634-04733	Front Wheel, 7 x 2
48	750-06036	Caster Hub, Long
49	750-06065	Caster Hub, Short
50	747-05362A	Grass Catcher Frame
51	964-05005	Grass Bag
52	732-05061A	Torsion Spring - RH
53	732-05062A	Torsion Spring - LH
54	710-04484	Self Tapping Screw, 5/16-18 x .750
55	911-04189	Rear Axle Assembly
56	682-9024	Caster Bracket Assembly, RH
57	682-9026	Caster Bracket Assembly, LH
58	687-05033	Caster Bracket Assembly
59	710-05425A	Screw, 5/16-14 x .750
60	911-1146	Caster Axle, .374 Dia. x 2.59
61	712-04217	Flange Lock Nut, 3/8-16
62	914-0104	Cotter Pin, .072 Dia. x 1.13 Lg.
63	726-0214	Push Cap, 5/8
64	731-09480	Dust Cover, 7"
65	932-0306A	Compr. Sprng., .531 OD x 1.75 Lg
66	735-0246A	Plug
67	736-0362	Washer, Flat, .330 x 1.25 x .06
68	736-0366	Flat Washer, .640 x 1.12 x .125
69	738-04502	Shdr. Screw, .50 x 1/4-20
70	741-0685	Flange Bearing, .631 ID
71	747-0924	Lock Pin: Front Wheel
72	712-0397A	Wing Nut, 1/4-20 w/Bell Washer
73	687-05086	21" Deck
74	710-04683A	Screw, tt, 3/8-16 x 1.00
75	710-05425A	Screw, 5/16-14 x .750
76	710-1017	Screw, 1/4-14 x .625
77	931-09863	Trim Console
78	931-09891	Handle Console
79	731-09730	Drive Handle
80	747-06338	Blade Control

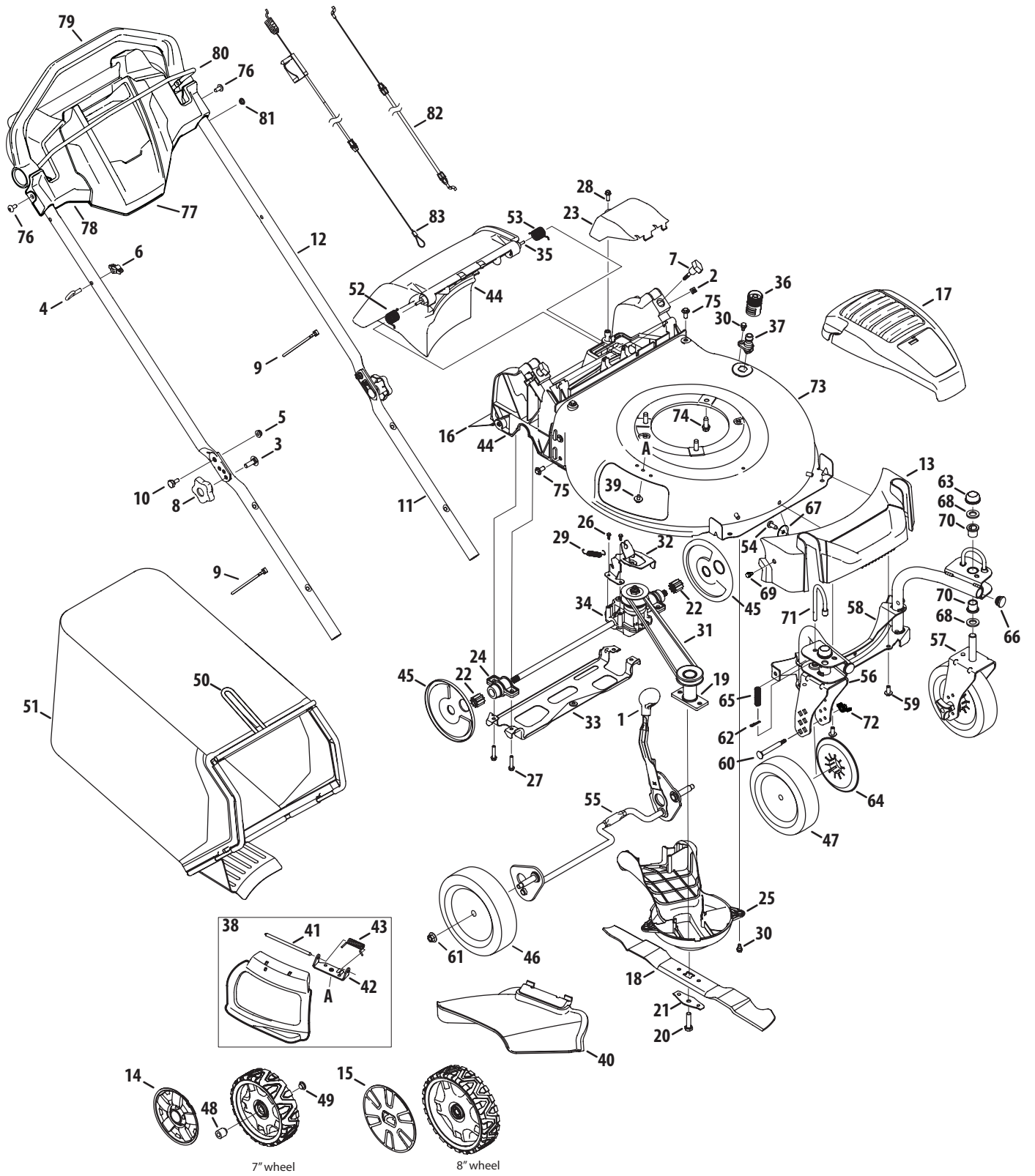
Continued on next page

## Model SC 500 EZ (12ACC6S)

Ref No.	Part Number	Description
81	748-05047	Shoulder Spacer, .18 x .315 x .09
82	946-05106	Control Cable
83	946-05121	Drive Cable
84	725-06121	Battery Charger
85	931-05131	Key Switch
86	710-0136	Screw, 1/4-20 x 1.75
87	710-0276	Bolt, Carr., 5/16-18 x 1.00
88	710-04995A	Screw, 5/16-14 x .750
89	912-0429	Nut, Flgk., 5/16-18
90	725-04903	Battery
91	725-06114	Plunger Switch
92	726-0201	Speed Nut
93	731-07135	Battery Housing
94	731-07154A	Battery Housing Top
95	731-09728	Key
96	731-09753	Electric Start Housing, RH
97	731-09755	Electric Start Housing, LH
98	735-04213A	Lid Seal
99	736-0242	Washer, Bell, .340 x .872 x .080
100	738-04431A	Scr., Sldr., 5/16-14 x .972
101	750-05377	Spacer, .340 x .460 x .246
102	787-03162	Retainer Bracket
—	925-06140	Wire Harness (Not Shown)
—	725-05106	Fuse (Not Shown)

**This page left intentionally blank.**

# Model SC 500 Z (12ABC62)






## Model SC 500 Z (12ABC62)

Ref No.	Part Number	Description
1	720-05025	Adjustment Knob
2	712-04222	Nut, Sq., 1/4-20
3	710-04998	Carriage Screw ,5/16-18
4	710-1205	Rope Guide
5	712-04064	Nut, Flange Lock, 1/4-20
6	720-0279	Knob
7	720-05066	Wing Nut
8	720-05009	Star Knob
9	725-0157	Cable Tie
10	738-04419A	Shdr. Screw, .375 x .126 x 1/4-20
11	749-04608A	Lower Handle
12	749-05084	Upper Handle
13	731-09621	Front Cover
14	731-09360	Hubcap, 7"
15	731-08570	Hubcap, 8"
16	731-07203	Trail Shield
17	731-09094A	Engine Shroud
18	942-0741A	Mulching Blade
19	687-02220	Blade Adapter
20	710-1044	Screw, 3/8-24 x 1.50
21	736-0524B	Blade Bell Support
22	917-04852	Spur Gear, 10T
23	731-08175	Transmission Cover
24	631-04501A	Bearing Assembly
25	631-04512C	Engine Baffle
26	710-04374	Screw, Hex Washer, .159 x .43
27	710-04774	Screw, 1/4-15 x 1.25
28	710-0895	Screw, 1/4-15 x .750
29	732-05150	Exten. Spring, 2.405
30	738-04278	Scr., Shldr., 1/4-20 x .50
31	954-04282	V-Belt
32	787-01868A	Transmission Bracket
33	787-01915A	Rear Support Bracket
34	918-07000	Transmission Assembly
35	747-05183	Pivot Rod
36	921-04041	Water Nozzle Adapter
37	731-07487	Water Nozzle
38	987-02516A	Mulch Plug (Incl. 41-43)
39	710-05073	Screw
40	731-07131	Side Discharge Chute
41	747-0710A	Hinge Pin
42	787-01779	Chute Deflector Bracket

Ref No.	Part Number	Description
43	732-1014C	Torsion Spring
44	631-04553A	Rear Discharge Door Assembly
45	731-07795	Wheel Dust Cover
46	934-04714	Rear Wheel, 8 x 2
47	634-04733	Front Wheel, 7 x 2
48	750-06036	Caster Hub, Long
49	750-06065	Caster Hub, Short
50	747-05362A	Grass Catcher Frame
51	964-05005	Grass Bag
52	732-05061A	Torsion Spring - RH
53	732-05062A	Torsion Spring - LH
54	710-04484	Self Tapping Screw, 5/16-18 x .750
55	911-04189	Rear Axle Assembly
56	682-9024	Caster Bracket Assembly, RH
57	682-9026	Caster Bracket Assembly, LH
58	687-05033	Caster Bracket Assembly
59	710-05425A	Screw, 5/16-14 x .750
60	911-1146	Caster Axle, .374 Dia. x 2.59
61	712-04217	Flange Lock Nut, 3/8-16
62	914-0104	Cotter Pin, .072 Dia. x 1.13 Lg.
63	726-0214	Push Cap, 5/8
64	731-09480	Dust Cover, 7"
65	932-0306A	Compr. Sprng., .531 OD x 1.75 Lg
66	735-0246A	Plug
67	736-0362	Washer, Flat, .330 x 1.25 x .06
68	736-0366	Flat Washer, .640 x 1.12 x .125
69	738-04502	Shdr. Screw, .50 x 1/4-20
70	741-0685	Flange Bearing, .631 ID
71	747-0924	Lock Pin: Front Wheel
72	712-0397A	Wing Nut, 1/4-20 w/Bell Washer
73	687-05069A	21" Deck
74	710-04683A	Screw, tt, 3/8-16 x 1.00
75	710-05425A	Screw, 5/16-14 x .750
76	710-1017	Screw, 1/4-14 x .625
77	931-09863	Trim Console
78	931-09891	handle Console
79	731-09730	Drive Handle
80	747-06338	Blade Control
81	748-05047	Shoulder Spacer, .18 x .315 x .09
82	946-05105	Control Cable
83	946-05121	Drive Cable

# Labels

777S32652

<b>⚠ WARNING</b>	
	Read and follow Operating Instructions before running engine.
	Gasoline is flammable. Allow engine to cool at least 2 minutes before refueling.
	Engines emit carbon monoxide. DO NOT run in enclosed area.

777D18543



**21" DECK** with **SMART JET DECK WASH SYSTEM**  
see operator's manual for instructions

777I23349



**10W30**

777D18546



**ELECTRIC START**

777I25151



**ELECTRIC START**

**STARTING INSTRUCTIONS**

- 1 SQUEEZE BLADE CONTROL HANDLE TO UPPER HANDLE
- 2 ENGAGE STARTING MECHANISM TO START ENGINE AND ENGAGE BLADE
- 3 RELEASE BLADE CONTROL HANDLE TO STOP ENGINE AND BLADE

CHARGE 8 TO 10 HOURS AT BEGINNING AND END OF SEASON, AND AS NEEDED.  
DO NOT CHARGE BATTERY FOR MORE THAN 12 HOURS.

**CHARGER**

777I20292

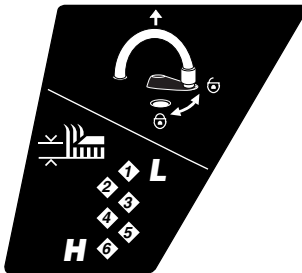


Diagram showing blade control handle movement and gear positions: H, 1, 2, 3, 4, 5, 6, L.

777I20745

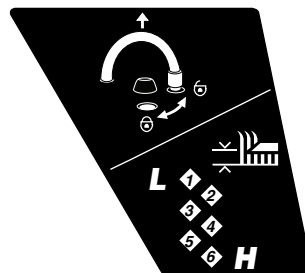


Diagram showing blade control handle movement and gear positions: L, 1, 2, 3, 4, 5, 6, H.

777D18407



**Cub Cadet**  
signature cut<sup>®</sup> series

**SC 100**  
WALK BEHIND

**159cc**  
PERFORMANCE TUNED ENGINE

**3 YEAR LIMITED WARRANTY**  
WITH SURESTART<sup>®</sup> GUARANTEE<sup>®</sup>

777D18409



**Cub Cadet**  
signature cut<sup>®</sup> series

**SC 500 hw**  
REAR DRIVE • HIGH WHEELS

**159cc**  
PERFORMANCE TUNED ENGINE

**3 YEAR LIMITED WARRANTY**  
WITH SURESTART<sup>®</sup> GUARANTEE<sup>®</sup>

777D18410



**Cub Cadet**  
signature cut<sup>®</sup> series

**SC 500 z**  
REAR DRIVE • CASTER WHEELS

**159cc**  
PERFORMANCE TUNED ENGINE

**3 YEAR LIMITED WARRANTY**  
WITH SURESTART<sup>®</sup> GUARANTEE<sup>®</sup>

777D19380



**Cub Cadet**  
signature cut<sup>®</sup> series

**SC 500 ez**  
ELECTRIC START • CASTER WHEELS

**159cc**  
PERFORMANCE TUNED ENGINE

**3 YEAR LIMITED WARRANTY**  
WITH SURESTART<sup>®</sup> GUARANTEE<sup>®</sup>

777D19364

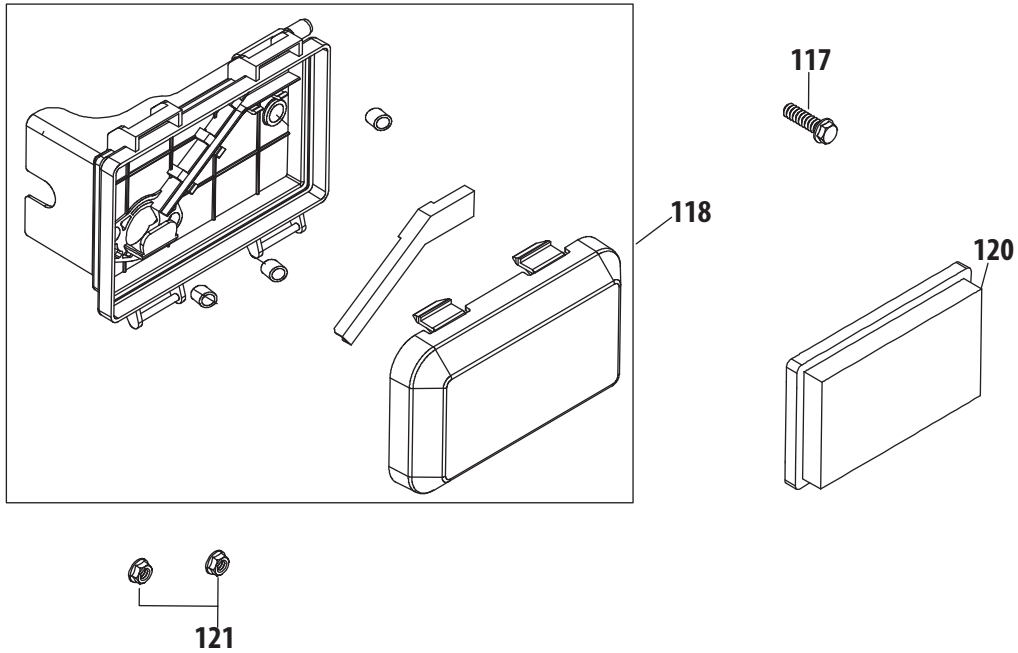


**EFFORTLESS DRIVE CONTROL**

**MYSPEED™**

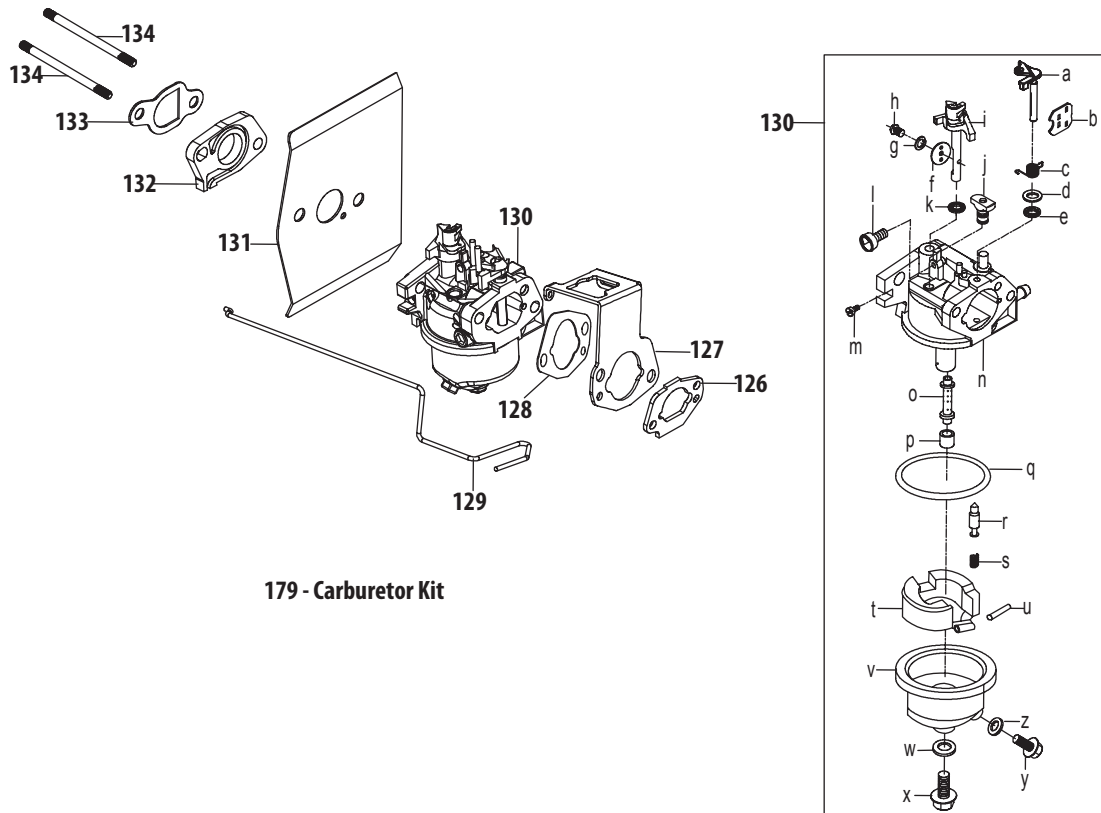


# Engine Model 5X65RU Air Cleaner



Ref.	Part Number	Description
117	710-04969	Bolt M6X30 Af Base/Coil/E-Starter
118	951-14439	Air Cleaner Housing Assembly
120	951-10298	Air Cleaner Kit
121	712-05015	Nut M6X10Mm Starter/Carb/Muff





**179 - Carburetor Kit**

Ref.	Part Number	Description
126	951-14419	Air Filter Base Gasket
127	951-14420	Choke Temp Control Bracket
128	951-14422	Choke Temp Control Bracket Gasket
129	951-14421	Choke Temp Control Linkage
130	951-14423	Carburetor Assembly
131	951-14424	Carburetor Gasket
132	951-11738	Carburetor Insulator
133	951-11528	Carburetor Insulator Gasket
134	951-14425	Carb Stud M6x87
179	951-14446	Carburetor Kit (Incl.e,j,k,l,o,p,q,r,s,t,u,w,z)
a	n/a	Choke Shaft
b	n/a	Choke Plate
c	n/a	Choke Return Spring
d	n/a	Choke Shaft Washer
e	n/a	Choke Shaft Fiber O-Ring
f	n/a	Throttle Plate
g	n/a	Throttle Plate Lock Washer
h	n/a	Screw M3X6 Throttle Plate

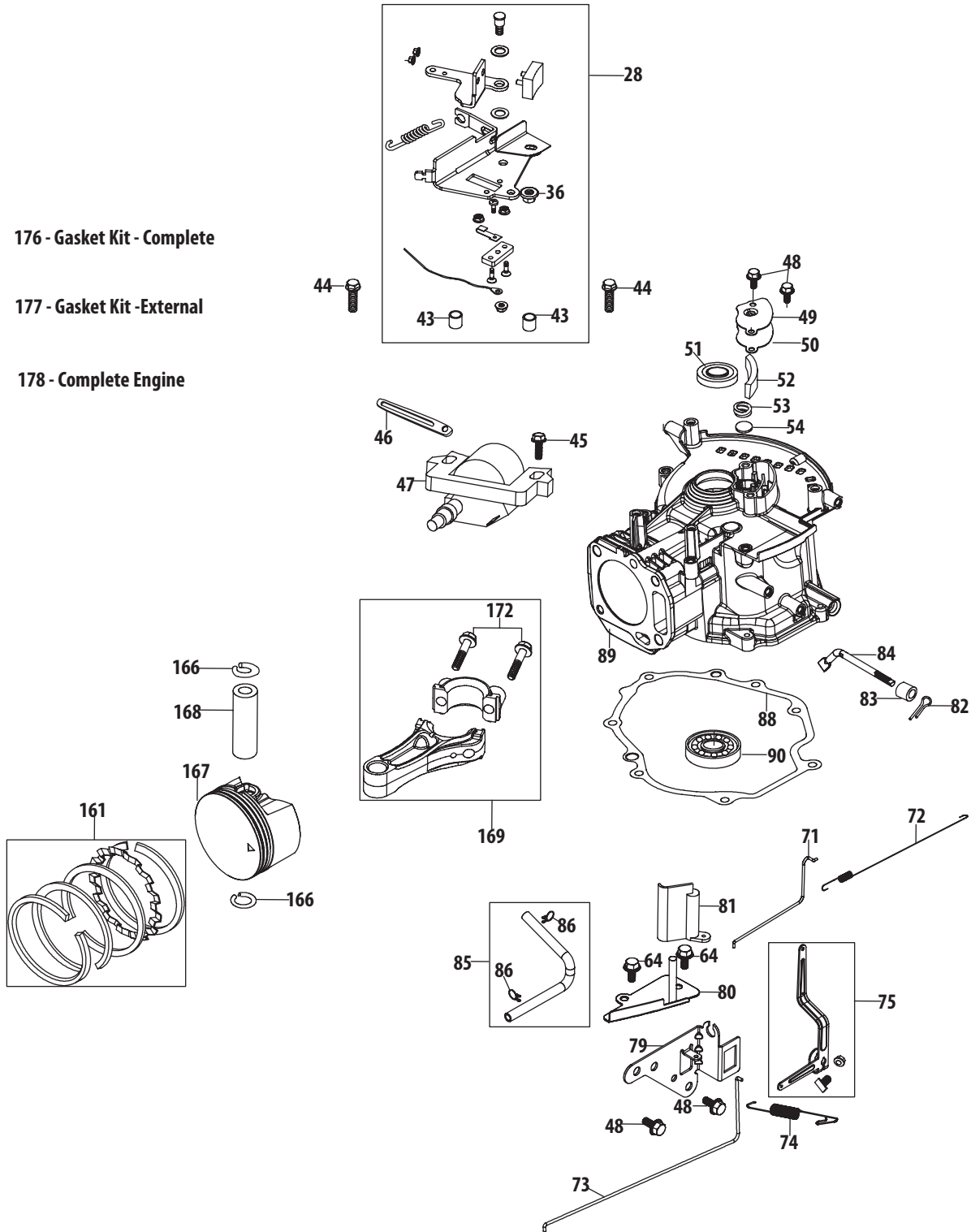
Ref.	Part Number	Description
i	n/a	Throttle Shaft
j	n/a	Idle Jet Assembly
k	n/a	Throttle Shaft Fiber O-Ring
l	n/a	Idle Speed Adjusting Screw
m	n/a	Idle Mixture Screw
n	n/a	Carburetor Body
o	n/a	Emulsion Tube
p	n/a	Main Jet
q	n/a	Fuel Bowl O-Ring
r	n/a	Needle Valve
s	n/a	Needle Valve Spring
t	n/a	Float
u	n/a	Float Pin
v	n/a	Fuel Bowl
w	n/a	Fuel Bowl Gasket
x	n/a	Fuel Bowl Mounting Bolt
y	n/a	Fuel Drain Plug
aa	n/a	Fuel Drain Plug Gasket

# 5X65RU Crankcase

176 - Gasket Kit - Complete

177 - Gasket Kit - External

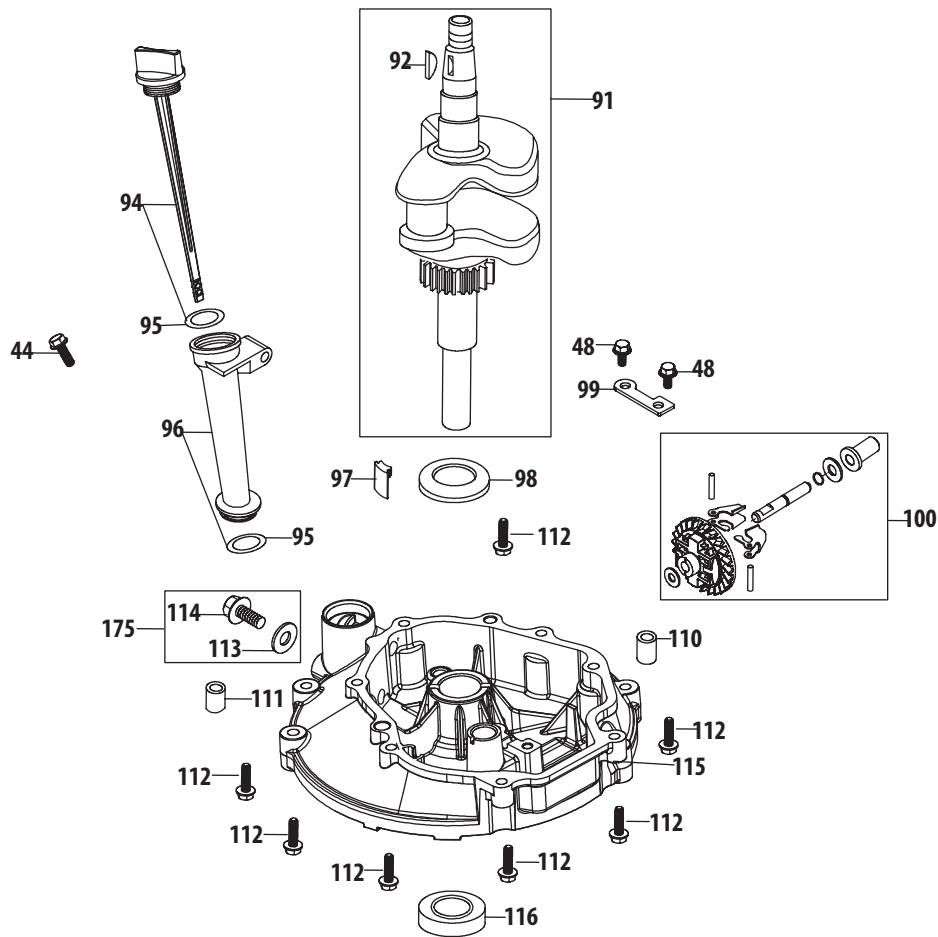
178 - Complete Engine



## 5X65RU Crankcase

Ref.	Part Number	Description	Ref.	Part Number	Description
28	951-14402	Brake Assembly	82	714-04074	Governor Arm Shaft Cotter Pin
36	712-04219	Brake Arm Nut	83	951-11574	Governor Seal
38	712-04209	Ground Switch Nuts M4	84	951-14416	Governor Arm Shaft
43	750-05384	Brake Spacer	85	951-11520	Breather Hose Assembly
44	710-04980	Bolt M6X35 Af Base/Brake/Dipstick	86	726-04101	Breather Hose Clamp
45	710-04918	Bolt M6x20 Ignition Coil	88	951-14415	Crankcase Cover Gasket
46	951-11622	Flexible Clamp, Ignition Coil	89	951-14447	Short Block
47	951-14403	Ignition Coil Assembly			(Incl.48-54,82-84,88-92,95,97-100, 110-116,126,132,133,149,152,156, 157,159-161,166-169,172)
48	710-04916	Bolt M6X14 Multi-Purpose	90	951-11369	Main Bearing
49	951-14404	Breather Cover Plate	161	951-14433	Piston Ring Set
50	951-14405	Breather Gasket	166	951-11603	Piston Pin Snap Ring
51	951-11596	Upper Crankshaft Seal	167	951-14434	Piston
52	951-11730	Breather Screen	168	951-14435	Piston Pin
53	732-04718	Breather Valve Spring	169	951-14436	Connecting Rod Assembly
54	951-11614	Breather Valve	172	710-05115	Connecting Rod Bolt
64	710-04915	Bolt M6X12 Multi-Purpose	176	951-14443	Gasket Kit - Complete
71	951-14408	Choke Linkage			(Incl.50,51,83,88,95,113,116,126, 128,131-133,149,152,156)
72	951-14409	Throttle Linkage Spring	177	951-14444	Gasket Kit -External
73	951-14410	Throttle Linkage			(Incl.50,95,113,126,128, 131-133,149,152)
74	951-14411	Governor Spring	178	952Z5X65RU	Complete Engine
75	951-14412	Governor Arm Assembly			
79	951-14413	Component Bracket			
80	951-14414	Air Vane Bracket			
81	951-11529	Air Vane			

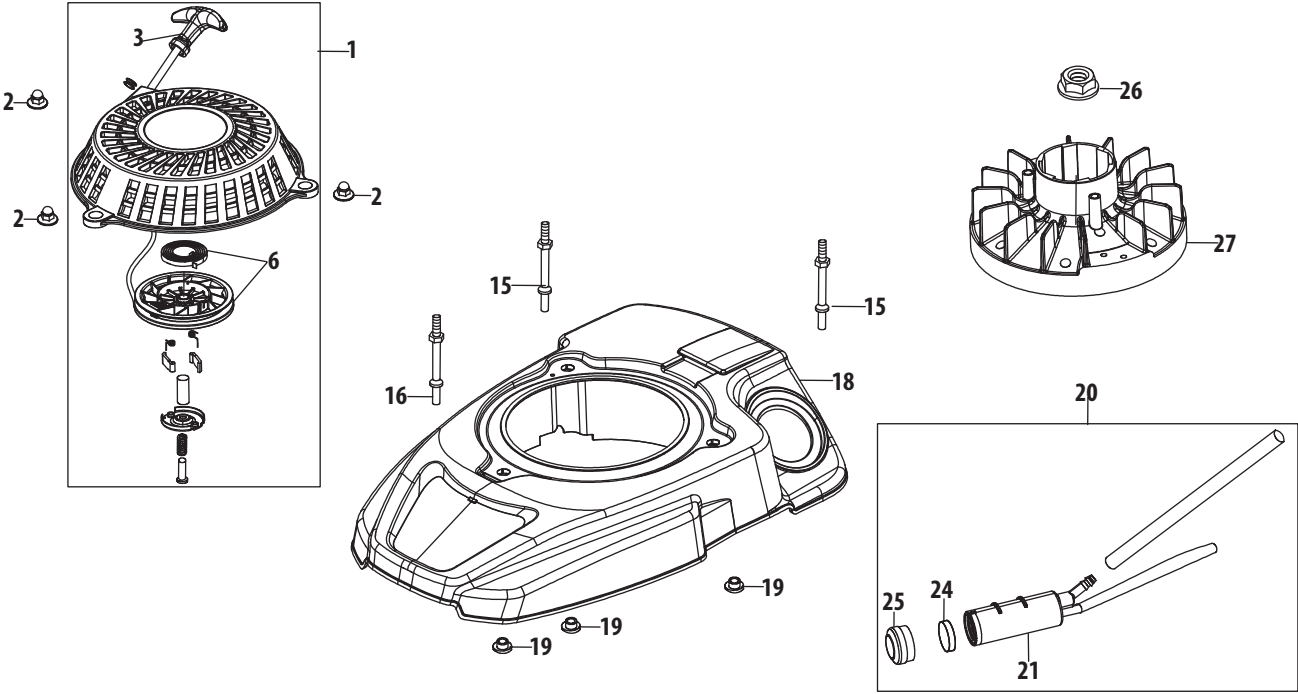
# 5X65RU Crankshaft & Crankcase Cover



Ref.	Part Number	Description
44	710-04980	Bolt M6X35 Af Base/Brake/Dipstick
48	710-04916	Bolt M6X14 Multi-Purpose
91	951-14417	Crankshaft Assembly
92	951-10307	Flywheel Key
94	951-14440	Oil Dipstick Assembly
95	951-11546	Dipstick / Oil Fill Tube O-Ring
96	951-14441	Oil Fill Tube Assembly
97	951-11733	Oil Return Seal
98	736-04491	Crankshaft Thrust Washer
99	951-11609	Governor Gear Mounting Plate

Ref.	Part Number	Description
100	951-11549	Governor Gear/Shaft Assembly
110	715-04092	Crankcase Cover Dowel Pin 7×14
111	715-04089	Crankcase Cover Dowel Pin 9×14
112	710-04931	Bolt M6X28 X65/P65 Crankcase
113	736-04440	Oil Drain Plug Washer
114	710-04906	Oil Drain Plug
115	951-14418	Crankcase Cover
116	951-11545	Lower Crankshaft Seal
175	951-10370	Oil Drain Plug & Washer Assembly

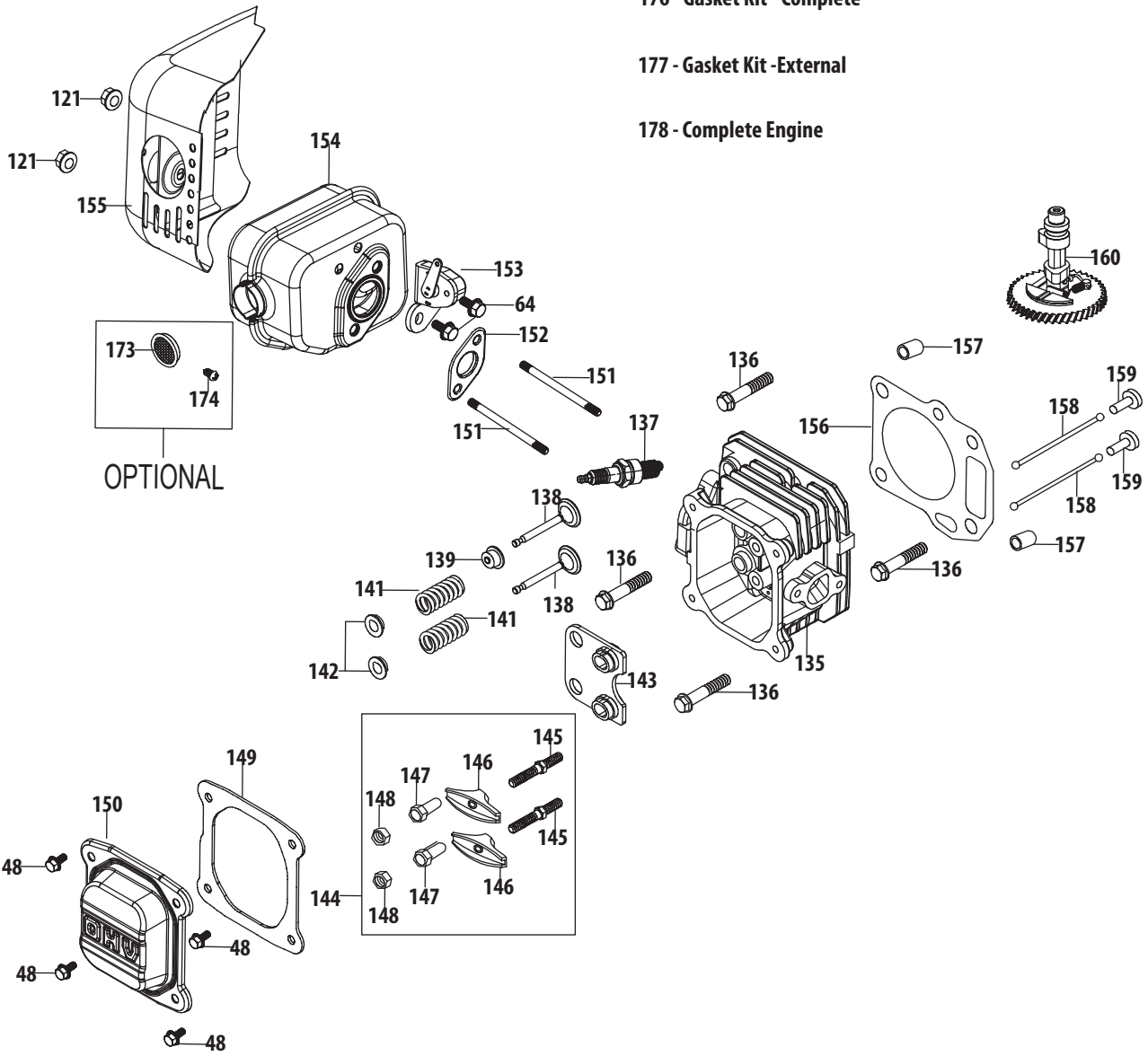
# 5X65RU Flywheel & Shroud



Ref.	Part Number	Description
1	951-14396	Starter Recoil Assembly
2	712-04290	Starter Acorn Nut
3	731-07925	Starter Handle
6	951-11721	Recoil Pulley & Spring Assembly
15	951-14397	Starter/Shroud Rear Stud M6x78.5
16	951-14398	Starter/Shroud Front Stud M6x74
18	951-14399	Engine Shroud Assembly

Ref.	Part Number	Description
19	750-05320	Engine Shroud Spacer
20	951-14442	Carbon Canister Assembly
21	951-14126	Carbon Canister
24	951-14400	Carbon Canister Filter
25	951-14127	Carbon Canister Filter Cap
26	712-04287	Flywheel Nut M14
27	951-14401	Flywheel

# 5X65RU Cylinder Head

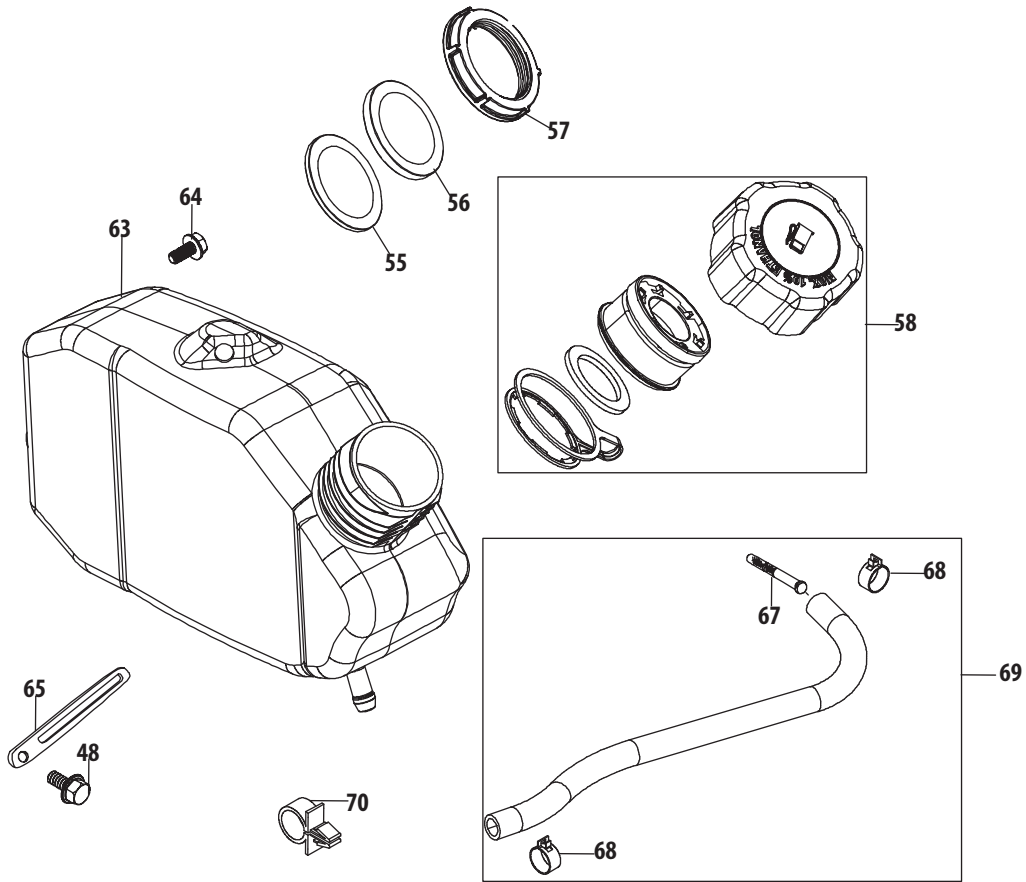


## 5X65RU Cylinder Head

Ref.	Part Number	Description
48	710-04916	Bolt M6X14 Multi-Purpose
135	951-14448	Cylinder Head Asm (Incl.132,133,135,138-143, 145-149,152,156)
	951-14445	Cylinder Head Service Kit (Incl.136,139,149,156)
136	710-04982	Bolt M8X54 Cylinder Head
137	951-14437	Spark Plug, F5Rtc
138	951-10313	Valve Kit
139	951-11818	Intake Valve Seal
140	951-10313	Valve Kit
141	951-12004	Valve Spring
142	951-11977	Valve Spring Retainer
143	951-11687	Push Rod Guide
144	951-11606	Rocker Arm Assembly
145	710-04902	Rocker Arm Stud
146	951-12001	Rocker Arm
147	751-11123	Fulcrum Nut
148	751-11124	Jam Nut
149	951-11551	Valve Cover Gasket
150	951-14426	Valve Cover

Ref.	Part Number	Description
151	710-05094	Muffler Stud M6X95
151	951-10342	Muffler Stud Assembly
152	951-14427	Muffler Gasket
153	951-14428	Choke Temp Control Thermostat
154	951-14429	Muffler Assembly
155	951-14430	Muffler Shield
156	951-14431	Cylinder Head Gasket
157	715-04108	Cylinder Head Dowel Pin 10x16
158	951-10314	Push Rod Kit
159	951-14432	Tappet
160	951-11741	Camshaft Assembly
173	951-10351	Spark Arrestor
174	710-04983	Spark Arrestor Screw
176	951-14443	Gasket Kit - Complete (Incl.50,51,83,88,95,113,116,126, 128,131-133,149,152,156)
177	951-14444	Gasket Kit -External (Incl.50,95,113,126,128, 131-133,149,152)
178	952Z5X65RU	Complete Engine

# 5X65RU Fuel Tank



Ref.	Part Number	Description
48	710-04916	Bolt M6X14 Multi-Purpose
55	731-08133	Fuel Tank Lower Grommet
56	951-14406	Fuel Tank Upper Grommet
57	731-08104	Fuel Tank Nut
58	951-14407	Fuel Cap Assembly
63	931-04629	Fuel Tank
64	710-04915	Bolt M6X12 Multi-Purpose
65	951-11680	Flexible Clamp, Vent Hose
67	951-10358A	Fuel Filter
68	951-11700	Fuel Hose Clamp
69	951-14438	Fuel Line Kit
70	723-04071	Plastic Support Clamp











To order replacement parts, call a Customer Support Representative at (800) 965-4CUB.  
Locate your nearest Cub Cadet dealer at (877) 282-8684  
or visit [www.cubcadet.com](http://www.cubcadet.com) to find the nearest Cub Cadet dealer in your area.

---

**CUB CADET LLC, P.O. BOX 361131 CLEVELAND, OHIO 44136-0019**

---