



**ARIEL**  
AM168JDTSZ Installation Instruction

## Safety Information

1. Please read carefully and follow all instructions when operating.
2. An earth leakage circuit-breaker must be installed and please carefully check it before use.
3. To avoid electric shock, the replacing of the wire must be done by the electrical engineer or the retailer. You could not alternate just by yourself. The wire for CT, TS series shall be: 3\*1.5 square mm; The wire for TS-1, CL, CW and CW1 series shall be 3\*1.0 square mm.
4. A grounding wire connector is provided on this unit to connect with the surface of water pump and air pump. The minimum of the solid copper must be 1.5 square mm.
5. Forbid modifying and eliminating the product.
6. Please don't use this product after alcohol or drugs.
7. The children user shall be closely supervised by parents.
8. All the electrical spare parts except the remote control must be put stable to avoid slip into the tub.
9. Warning: the water temperature shall never exceed 60 degree centigrade.
10. Using strong causticity chemical liquid to cleaning the product, such as vitriol, hydrochloric acid, lye and so on is forbidden.
11. The pumping machine would be very hot when and after running, to avoid scald, please don't touch the surface of the pumping machine.
12. The water level must be higher than the jet before turning the product on.
13. No dropping things into the connection point of the pump and the power machine.
14. Warning: Avoid electrical shock, the GFCI/RCD (Earth Leakage Circuit Breaker) must be installed.
15. Warning: Avoid electrical shock, not allow using extended wire. The socket used should be positioned near the products.

## Maintenance instruction

### 1. The cleaning of the acrylic surface:

For the daily maintenance you could just use the sponge and water. If there are scratches appear in the surface, please use the 1500 waterproof abrasive paper to polish the surface. Then use toothpaste to polish again. You could also use the dirt cleaning machine for help. However, you could not use strong causticity chemical liquid to cleaning the product, such as vitriol, hydrochloric acid, lye and so on.

### 2. Electroplate cleaning:

Please use the soft cloth for cleaning. Please don't use the rough cloth.

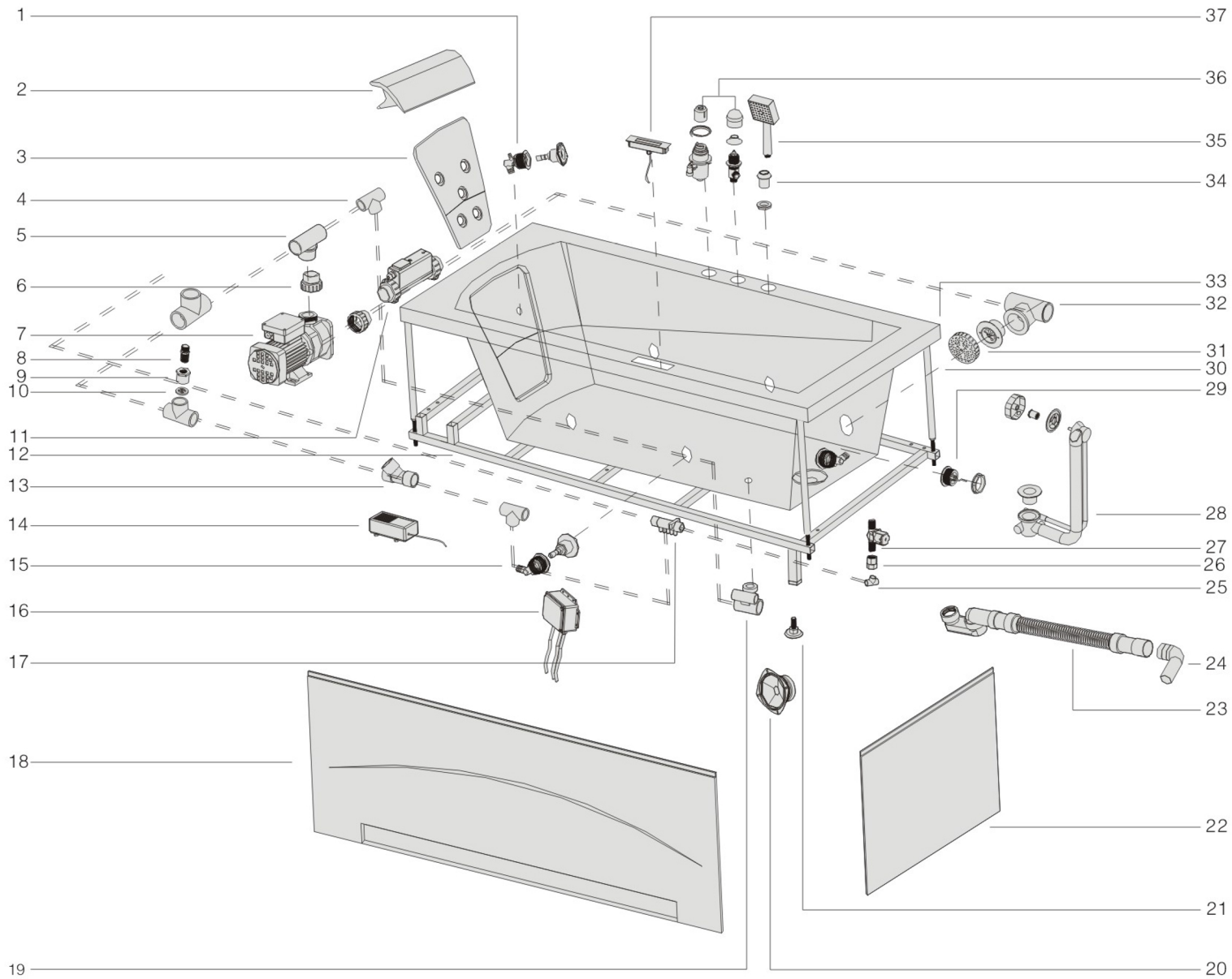
### 3. Suction net cleaning:

Turn the screw out and take the suction net out, Clean it to keep the water going through smoothly. Not use strong causticity chemical liquid to cleaning the product, such as vitriol, hydrochloric acid, lye and so on.

# CONTENTS

01-02	AM163\164\166Components Structure
03-04	AM165Components Structure
05-06	AM168Components Structure
07-08	AM173Components Structure
09	AM163\164\166Water and wire line instruction diagram
10	AM165Water and wire line instruction diagram
11	AM168Water and wire line instruction diagram
12	AM173Water and wire line instruction diagram
13	Connection diagram of the faucet's pipe
14	Installation Step
15-16	Wire connection diagram for massage bathtubs
17-18	Faucet's usage instruction
19-20	TS Control panel usage instruction
21-22	TS-1 Control panel usage instruction
23	CL、CW1 Control panel usage instruction
24	CW Control panel usage instruction
25-31	CT Control panel usage instruction
32	Troubleshooting Instructions

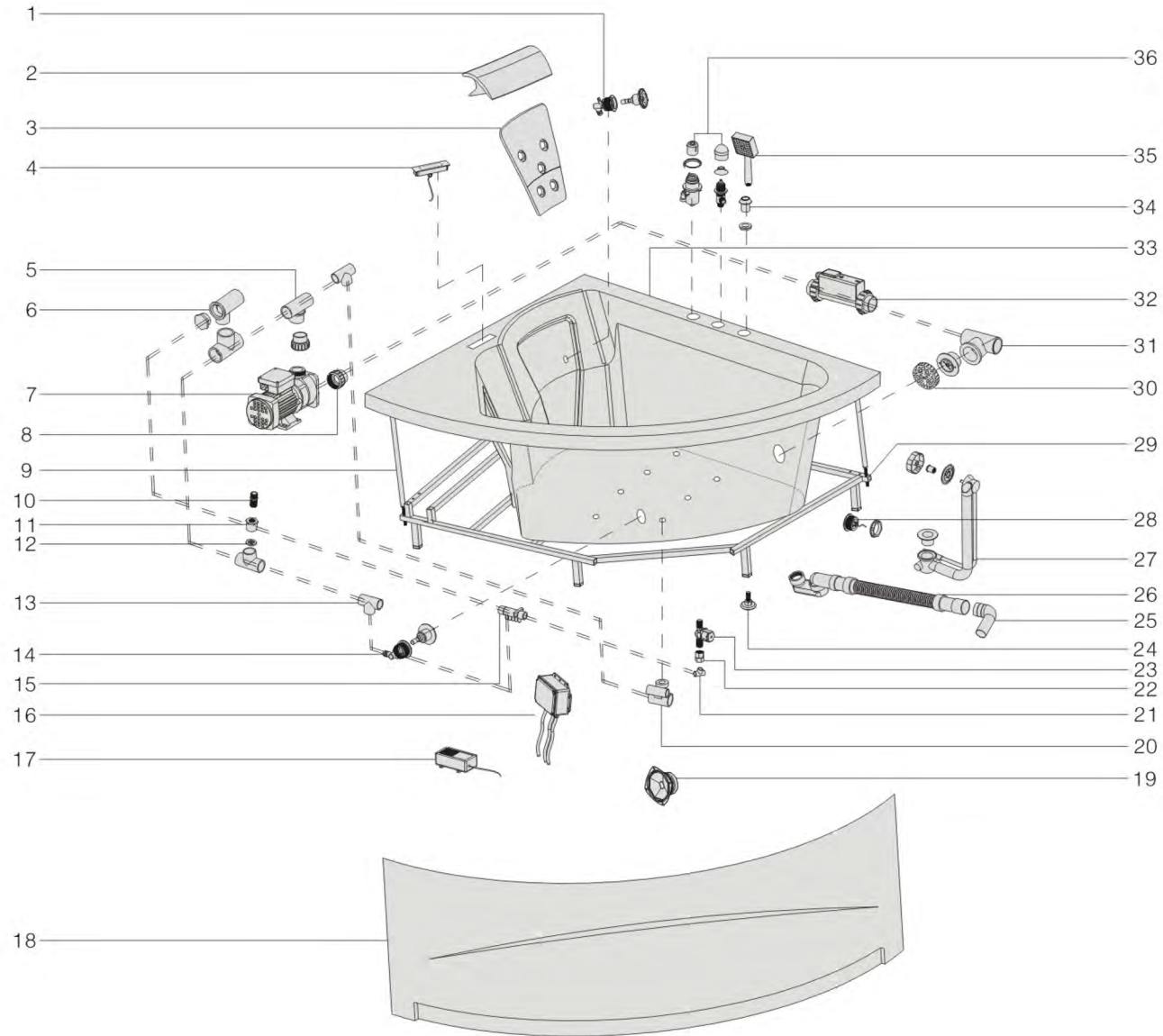
# AM163\164\166 Components Structure



## Troubleshooting Instructions

Problem	Cause	Solution	Problem	Cause	Solution
The bathtub anomaly shaking and noising	<ol style="list-style-type: none"> <li>1.The under frame of bathtub is imbalance and/or the bolt is not tighten.</li> <li>2.Screws of fixed of pump are not tightened or the clutch damper was missing.</li> <li>3.Idle running on motor.</li> <li>4.Motor failures.</li> </ol>	<ol style="list-style-type: none"> <li>1.Putting the tub on a level surface, leveling the tub by adjusting under frame of the tub, tightening bolt.</li> <li>2.Should be 4 screws of fixed of Pump and 4 clutch damper, all bolts have to be tightened.</li> <li>3.Pour more water until it over flow the sensor.</li> <li>4.Contact you dealer or after-sale services department of EAGO Company.</li> </ol>	Chromotherapy not on	<ol style="list-style-type: none"> <li>1.The plug get off.</li> <li>2.Control circuit board error.</li> </ol>	<ol style="list-style-type: none"> <li>1.Plug in again.</li> <li>2.Contact you dealer or after-sale services department of EAGO Company.</li> </ol>
			Insufficient inflow rate	<ol style="list-style-type: none"> <li>1.The water pressure is too low.</li> <li>2.Water inlet block.</li> </ol>	<ol style="list-style-type: none"> <li>1.Check the water pressure.</li> <li>2.Check and clean the dirty filter</li> </ol>
			Diverter valve is not working	<ol style="list-style-type: none"> <li>1.Gasket of the valve is distortion or damage.</li> </ol>	<ol style="list-style-type: none"> <li>1.Replace a new gasket</li> </ol>
The pump is running, but poor jet action	<ol style="list-style-type: none"> <li>1.The suction net partly blocked.</li> <li>2.Not adequate water level.</li> <li>3.Adjusting valve of function is shut down.</li> <li>4.The inlet pipe of pump exist air.</li> <li>5.Other Probable Cause.</li> </ol>	<ol style="list-style-type: none"> <li>1.Take off the suction net with screwdriver. Clean it to keep the water going through smoothly.</li> <li>2.Pour more water until it over flow the sensor.</li> <li>3.Open the adjusting valve of function.</li> <li>4.                             <ol style="list-style-type: none"> <li>a ) Open the washout valve to exhaust the air inside the pipe.</li> <li>b ) Check and tighten all connection part of the inlet pipe.</li> <li>c ) Close the washout valve properly.</li> </ol> </li> <li>5.The water pipe and air pipe may be mixed up. Please contact the professional technician to fix it.</li> </ol>	No bubble out from the Hydro-massage jet	<ol style="list-style-type: none"> <li>1.Air pipe block.</li> <li>2.Air pump is switch off.</li> <li>3.Air pump does not operate.</li> </ol>	<ol style="list-style-type: none"> <li>1.Take off the lid of the Hydro-massage jet; clean the small air hole by thin wire.</li> <li>2.Switch on the air pump.</li> <li>3.Follow the "air pump does not operate" instruction process to check the air pump.</li> </ol>
			Water outlet switch leak or does not pop up	<ol style="list-style-type: none"> <li>1.The support screw under the water outlet switch is too tight or falling off.</li> <li>2.The connection rope inside the water outlet switch is broken.</li> <li>3.The gasket is not flat.</li> </ol>	<ol style="list-style-type: none"> <li>1.Take out the water outlet switch; adjust the support screw to proper point.</li> <li>2.Replace whole set of the water outlet switch.</li> <li>3.Reinstall the water outlet switch; make sure the gasket is flat.</li> </ol>
			Some water left inside the pipe	Some models of bathtub can not drain all water out from the pipe because of its special construction.	
Water pump or air pump does not operate	<ol style="list-style-type: none"> <li>1.The voltage is unusual or the power is out.</li> <li>2.The fuse blew out or the earth leakage circuit-breaker is OFF.</li> <li>3.Nothing appears on the panel screen.</li> <li>4.No signal from the water level sensor.</li> <li>5.Baroswitch broken.</li> </ol>	<ol style="list-style-type: none"> <li>1.Plug the power cable into an electrical outlet. Make sure the switch is in "ON" position.</li> <li>2.The fuse or the earth leakage circuit-breaker should be checked or repaired by a professional electrician.</li> <li>3.Contact you dealer or after-sale services department of EAGO Company.</li> <li>4.Pour more water until it over flow the sensor.</li> <li>5.Replace the same model of baroswitch by professional electrician.</li> </ol>			

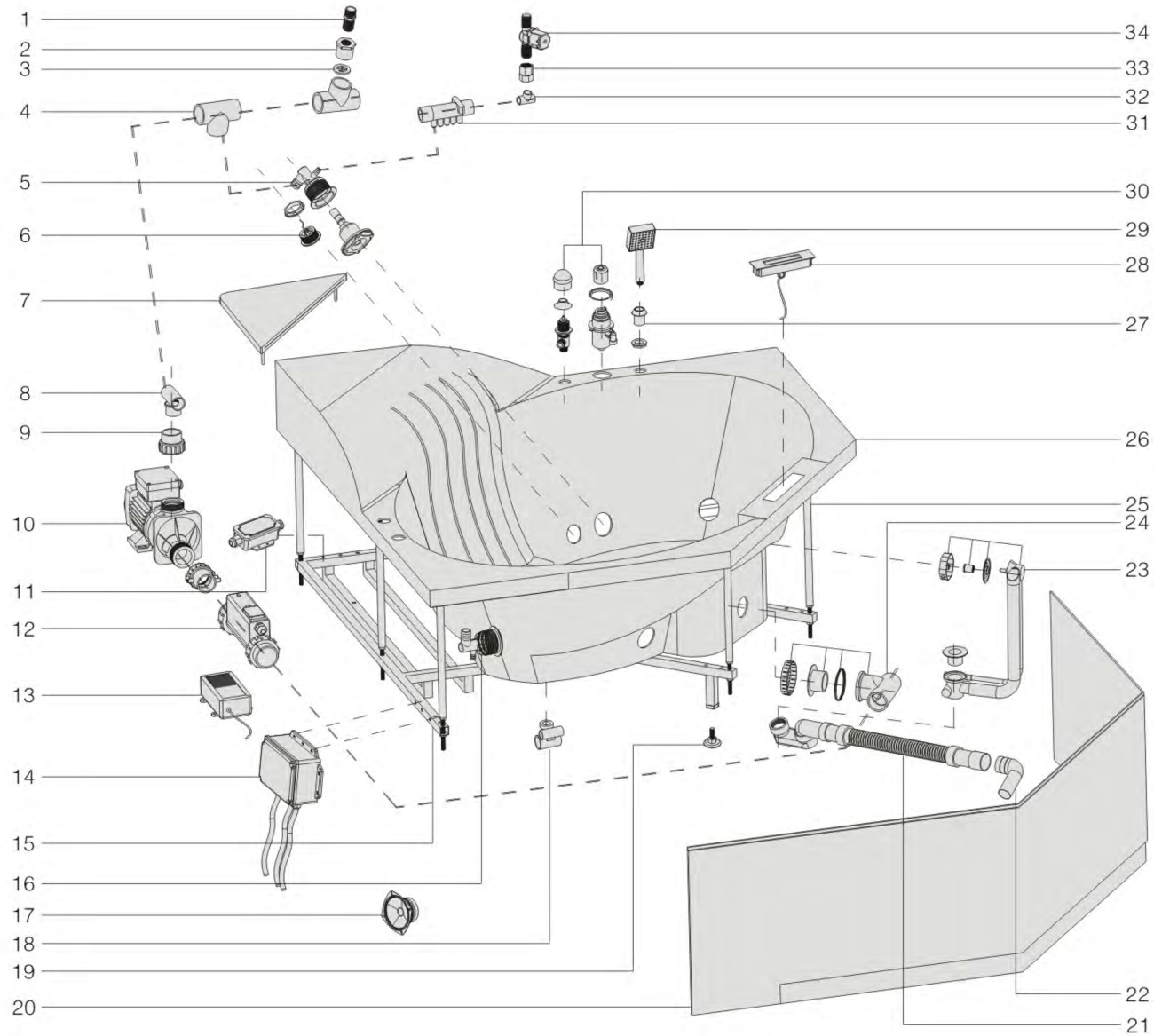
# AM165 Components Structure



# AM165 Components Structure

1.2 inches white jet	2.KA134 pillow	3.KB302 pillow	4.BS311 PC board	5.A07 lengthened plastic	6.Air exhaust switch	7.Water pump
						
8.Water pump connector	9.Adjustable legs	10.4 cm conversion	11.Inside connector	12.One way plastic stuff	13.1 inches three way conversion	14.3inches white jet
						
15.Five holes air-distributing pipe	16.PC board	17.Ozone disinfection	18.Skirt panel	19.Loudspeaker	20.Bottom jet	21.0.5 inch three way conversion
						
22.W1-0138 Movable connector	23.Drainage valve	24.Bathtub leg	25.Water out connector	26.Smell proof water drainage	27.3629A-5 Plastic drainage	28.Bottom light
						
29.Stainless still bracket	30.Chrome plate net	31.Plastic suction	32.thermostatic	33.Bathtub body	34.Water proof shower pedestal	35.Shower head
						
36.7008 faucet						
						

# AM168 Components Structure

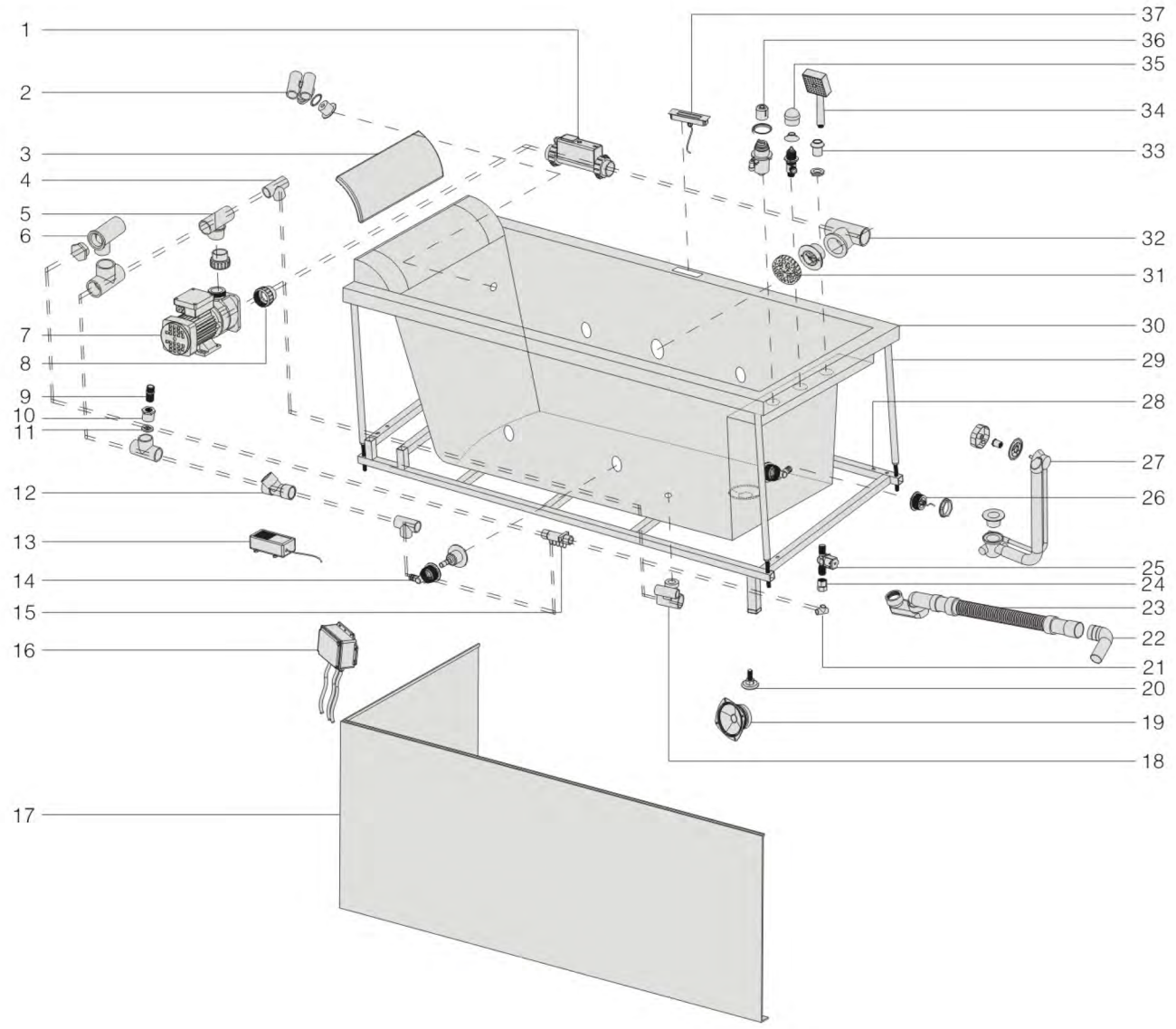




# AM168 Components Structure

1.4 cm conversion	2.Inside connector	3.One way plastic stuff	4.1 inches three way conversion	5.3 inches white jet	6.Bottom light
					
7.Water fall	8.A07 lengthened plastic	9.Water pump connector	10.Water pump	11.Wire connector box	12.thermostatic
					
13.Ozone disinfection	14.PC board	15.Stainless still bracket	16.2 inch white jet	17. Loudspeaker	18.Bottom jet
					
19.Bathtub leg	20.Skirt panel	21.Smell proof water drainage	22.Water out connector	23.3629A-5 Plastic drainage	24.Plastic suction
					
25.Adjustable legs	26.Bathtub body	27.Water proof shower pedestal	28.BS311 PC board	29.Shower head	30.7008 faucet
					
31.Five holes air-distributing pipe	32.0.5 inch three way conversion	33.W1-0138 Movable connector	34.Drainage valve		
					

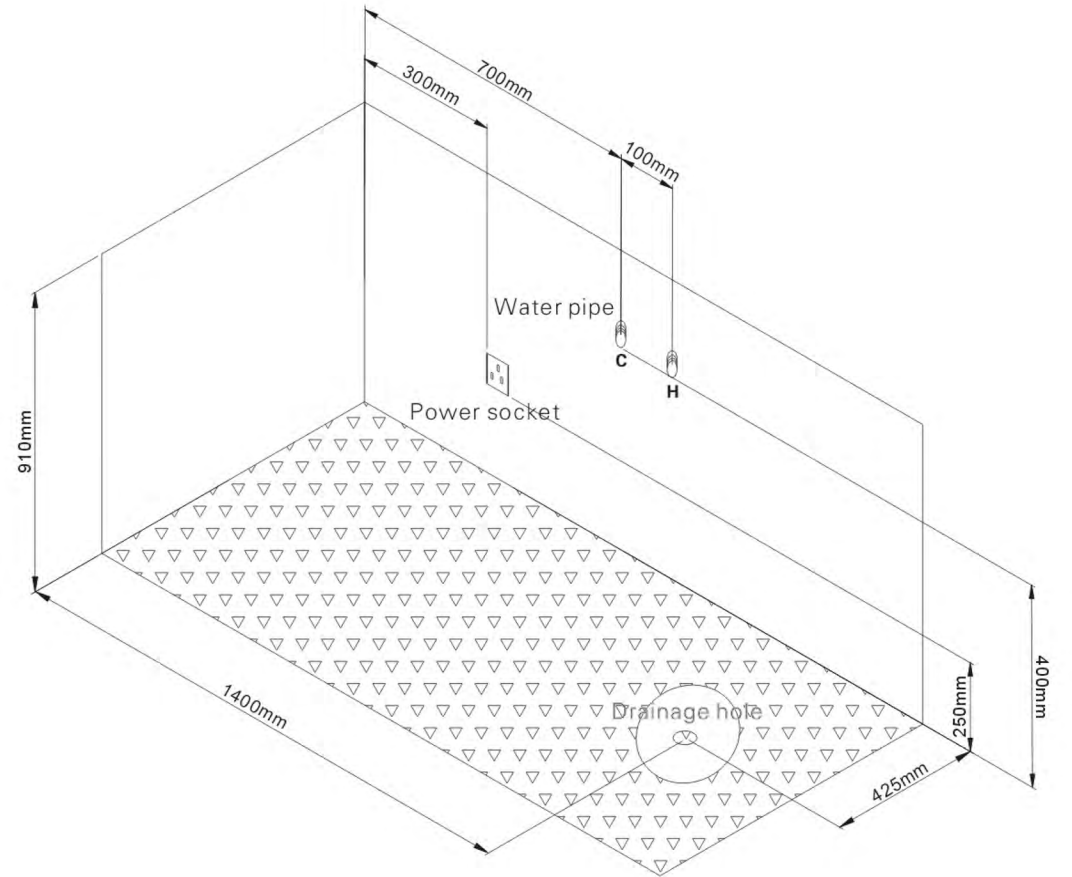
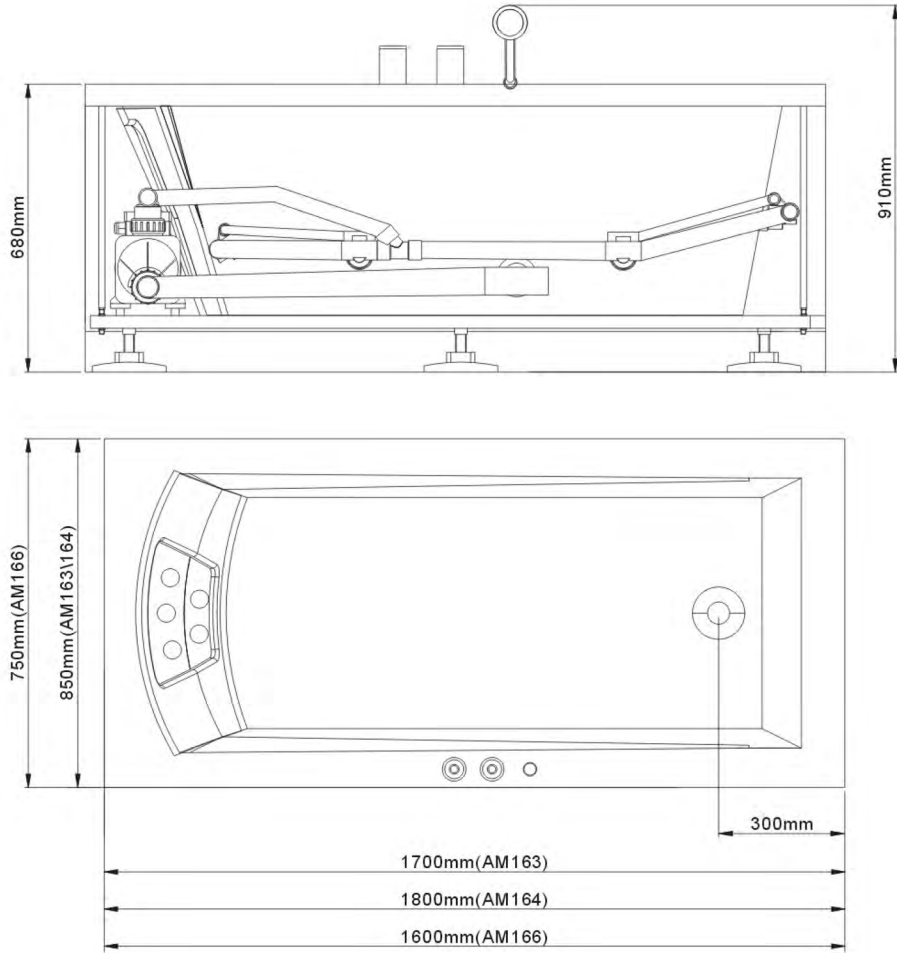
# AM173 Components Structure



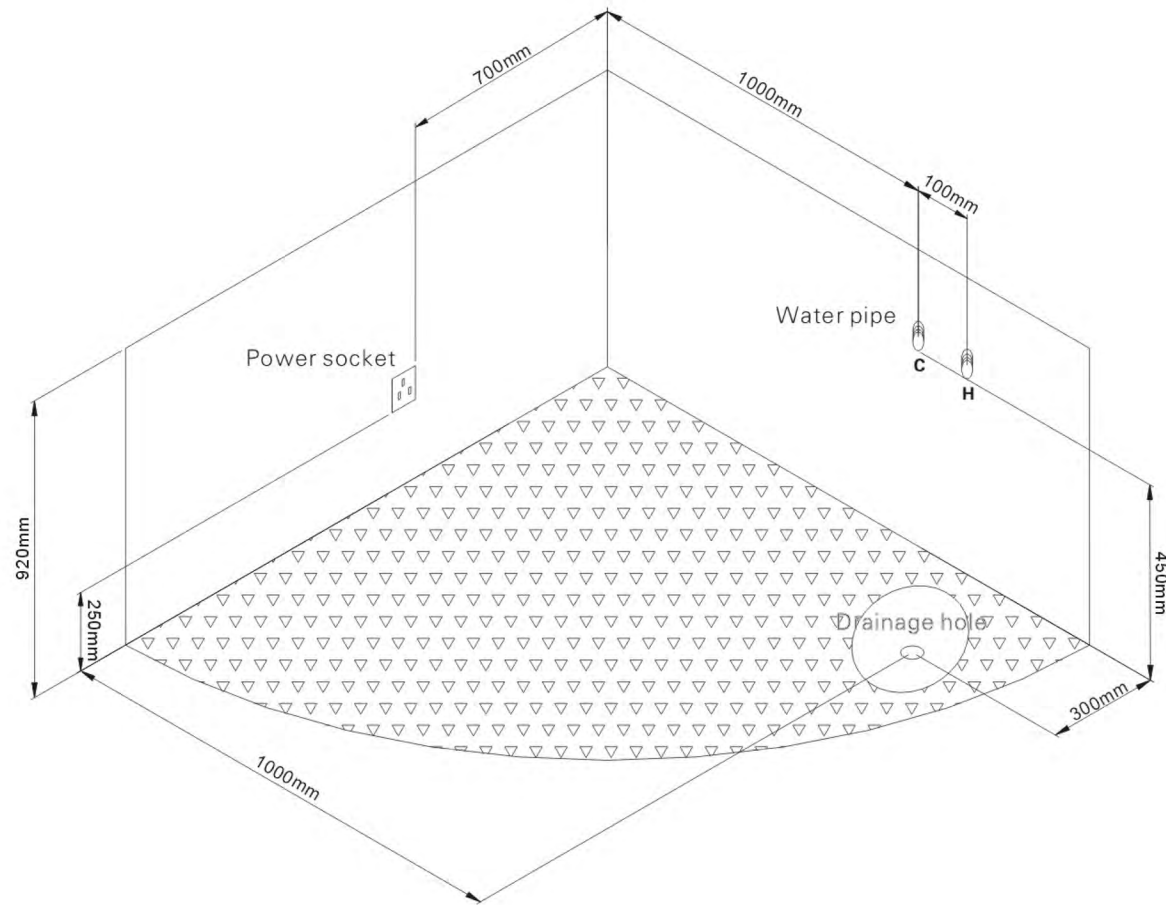
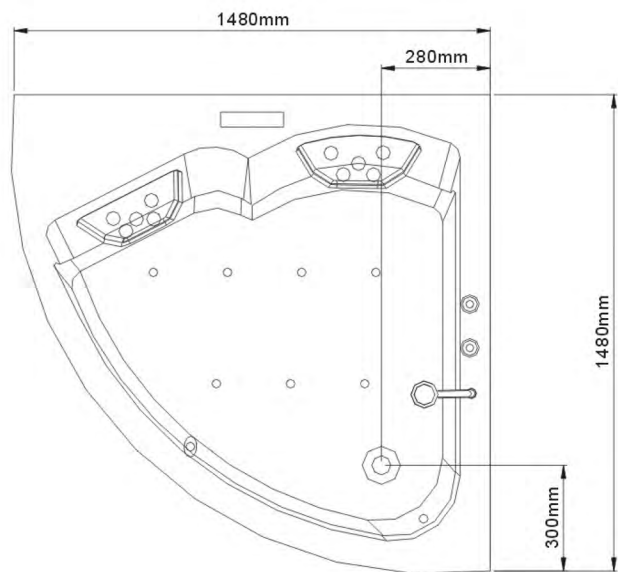
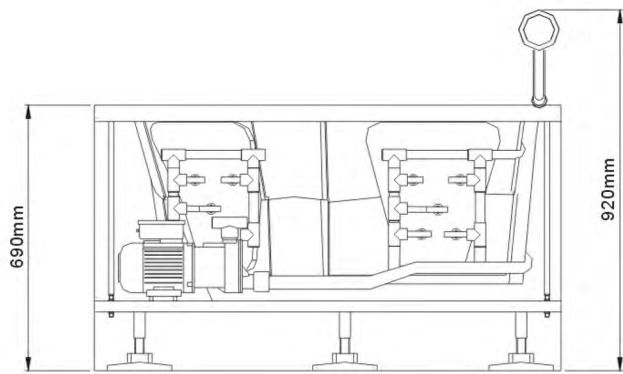
# AM173 Components Structure

1.thermostatic	2.Back jet	3.KB236A pillow	4.1 inches three way conversion	5.A07 lengthened plastic	6.Air exhaust switch	7.Water pump
						
8.Water pump connector	9.4 cm conversion	10.Inside connector	11.One way plastic stuff	12.1 inch three way conversion	13.Ozone disinfection	14.3 inches white jet
						
15.Five holes air-distributing pipe	16.PC board	17.Skirt panel	18.Bottom jet	19.Loudspeaker	20.Bathtub leg	21.0.5 inch three way conversion
						
22.Water out connector	23.Smell proof water drainage	24.W1-0138 Movable connector	25.Drainage valve	26.Bottom light	27.3629A-5 Plastic drainage	28.Stainless still bracket
						
29.Adjustable legs	30.Bathtub body	31.Chrome plate net	32.Plastic suction	33.Water proof shower pedestal	34.Shower head	35.7008B faucet
						
36.7008A faucet	37.BS311 PC board					
						

# AM163\164\166 Water and wire line instruction diagram

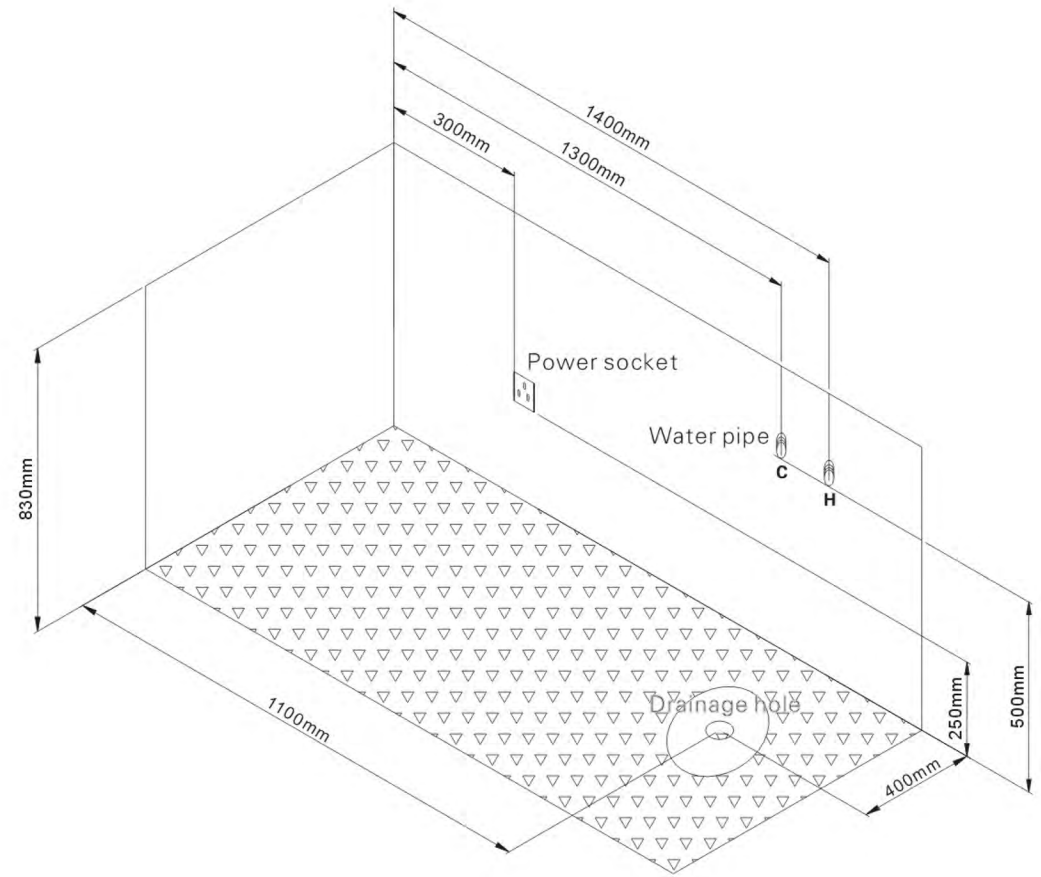
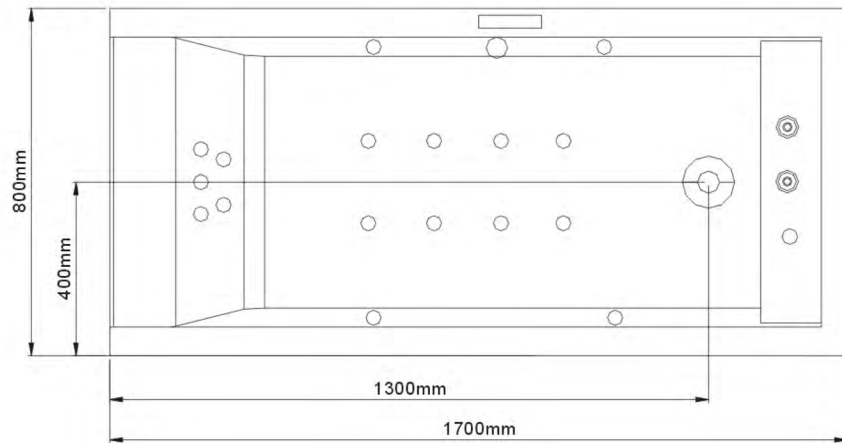
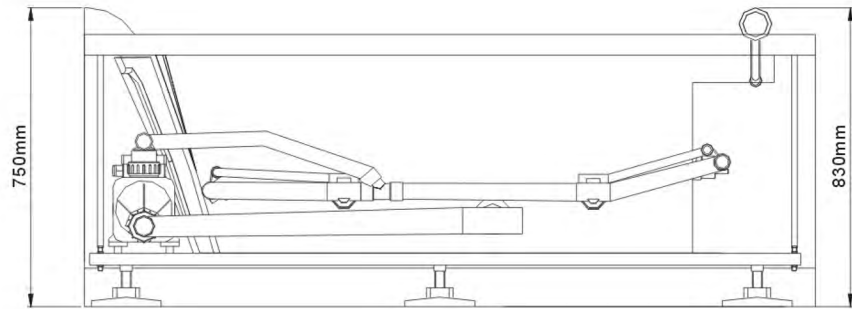


# AM165 Water and wire line instruction diagram



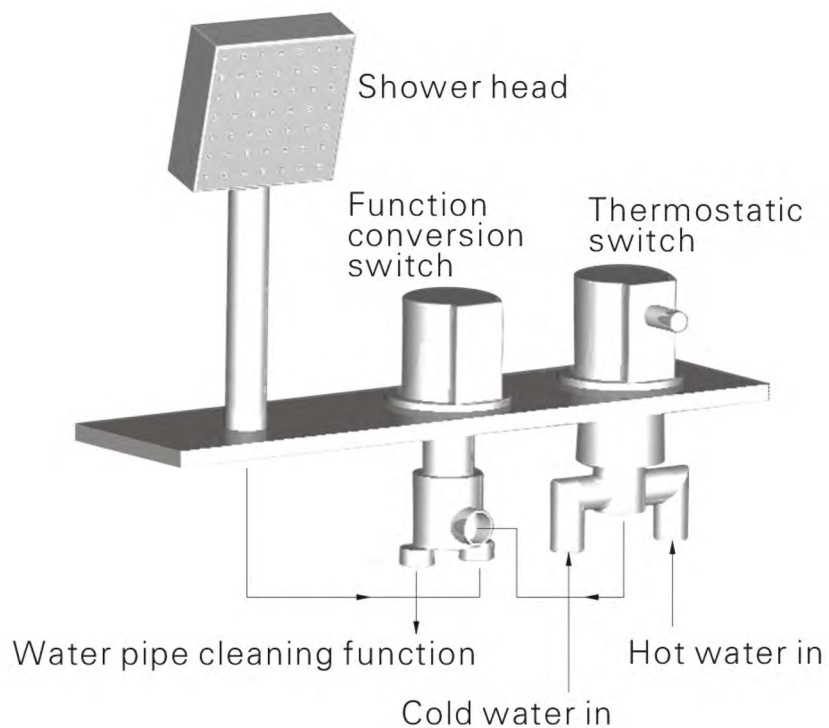


# AM173 Water and wire line instruction diagram

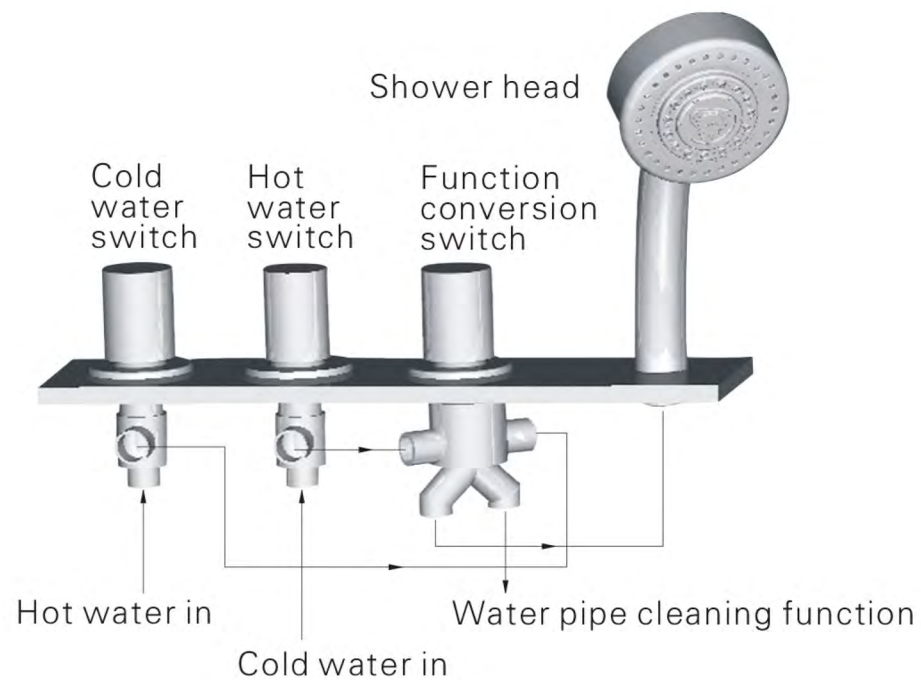


# Connection diagram of the faucet's pipe

Spare parts:



Optional:





## Installation Step

The product use standard accessories. Please refer to production tech parameter and follow the below steps for installation:

**1. Confirm the direction for the product**→**2. Adjust the product for horizontal**→**3. Connect the water-in and water drainage**→**4. Connect the power**→**5. Check and confirm**→**6. Reposition**→**7. Pour water and test**

### 1、 Confirm the installation site for the product

Please see to the product technique diagram and related tech parameter to connect the water drain pipe, power socket, water-in pipe. Confirm if there is enough space for the connecting.

### 2、 Adjust the product for horizontal

Adjust the adjustable leg of the product; turn it into horizontal level.

### 3、 Connect the water-in and water drainage

The water out pipe lays in the bottom of the bathtub, with diameter 38 mm. the pipe could be elbow in whatever way you like. Please put the pipe into the water drainage system and seal it well. Please keep the pipe running through to avoid water exhausted.

### 4、 The Power Connection

This item is adjustable by the required power; please refer to the technique parameter for the direction of the power socket. Pay attention to the water-proof; connect the connector plugs into the socket. (Noted: the yellow-green bi-color wire from the water pump is the ground line, the diameter is 8 mm).

### 5、 Check and confirm

After the above steps, please check the connection points are sealed or not. Clean the dirty things in the bathtub and open the water drainage. Wash the bathtub by water. In order not to stuff the water drainage and jets, please do clean the dirty things before washing.

### 6、 Reposition

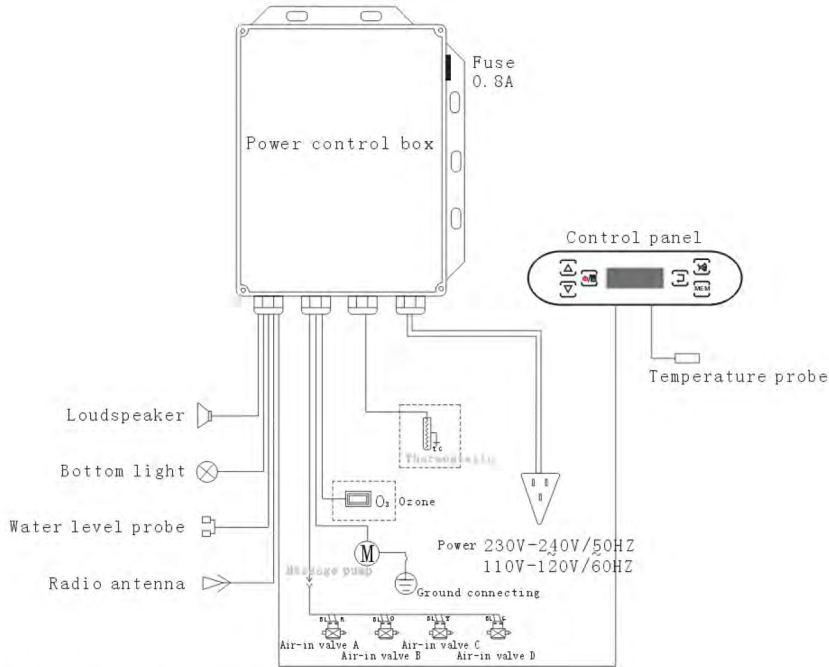
Reposition the product to where you want.

### 7、 Pour the water in, check and test before use

Confirm the bathtub is clean. Close the water drainage and start storing the water. When the water level is higher than the probe, turn on the bathtub and try the functions according to the control panel instruction.

# Wire connection diagram for massage bathtubs

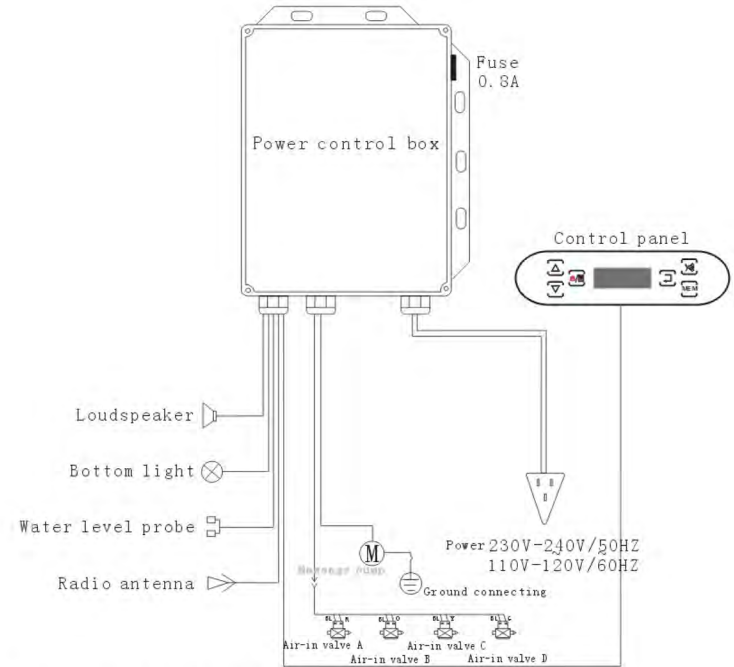
TS luxurious bathtub wire connection diagram



Electric parameter

Spare part	Message pump	Ozone machine	Bottom light	Thermostatic	Electromagnetism valve	PC control panel	Loudspeaker	Notes
Rate voltage	AC220-240V/50HZ	AC12V	DC12V	AC220V/50HZ	DC12V	AC220V/50HZ		
Rate voltage	AC110-120V/60HZ	AC12V	DC12V	AC120V/60HZ	DC12V	AC120V/60HZ		
Rate power	1125W	5W	3W	1500W	5W		15W	

TS-1 luxurious bathtub wire connection diagram

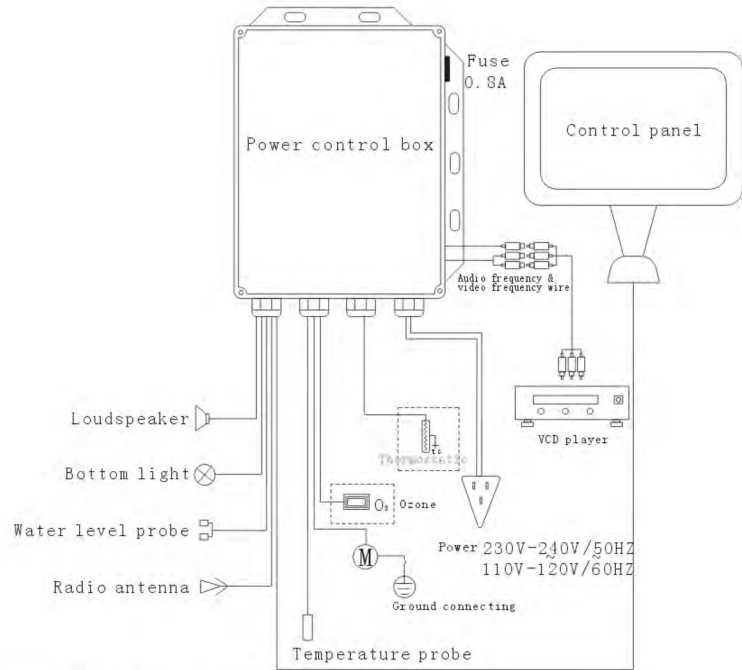


Electric parameter

Spare part	Message pump	Ozone machine	Bottom light	Thermostatic	Electromagnetism valve	PC control panel	Loudspeaker	Notes
Rate voltage	AC220-240V/50HZ		DC12V		DC12V	AC220V/50HZ		
Rate voltage	AC110-120V/60HZ		DC12V		DC12V	AC120V/60HZ		
Rate power	1125W		3W		5W		15W	

# Wire connection diagram for massage bathtubs

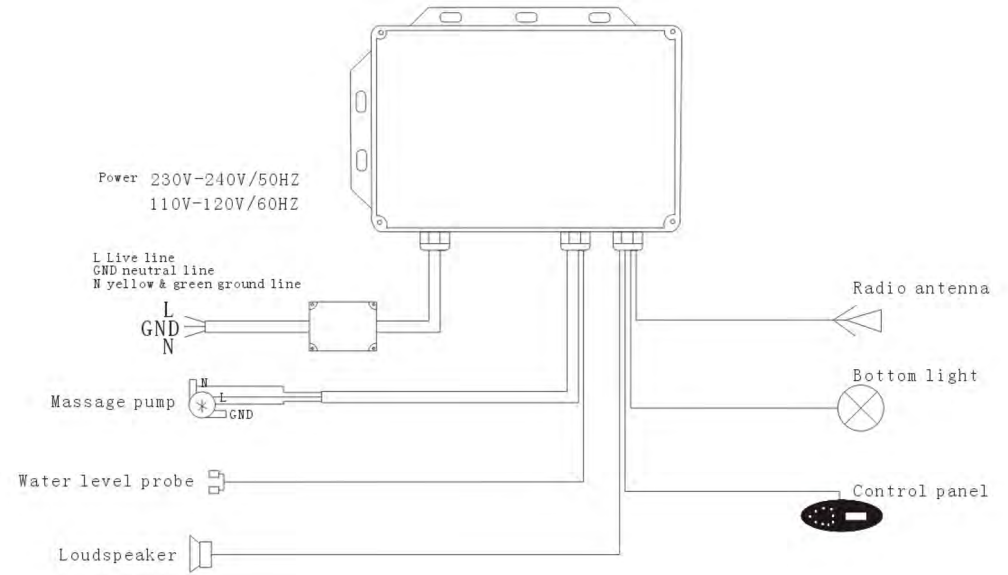
CT luxurious bathtub wire connection diagram



Electric parameter

Spare part	Massage pump	Ozone machine	Bottom light	Thermostatic	Electromagnetism valve	PC control panel	Loudspeaker	Notes
Rate voltage	AC220-240V/50HZ	AC12V	DC12V	AC220V/50HZ		AC220V/50HZ		
Rate voltage	AC110-120V/60HZ	AC12V	DC12V	AC120V/60HZ		AC120V/60HZ		
Rate power	1500W	5W	3W	1500W			15W	

CL, CW luxurious bathtub wire connection diagram



Electric parameter

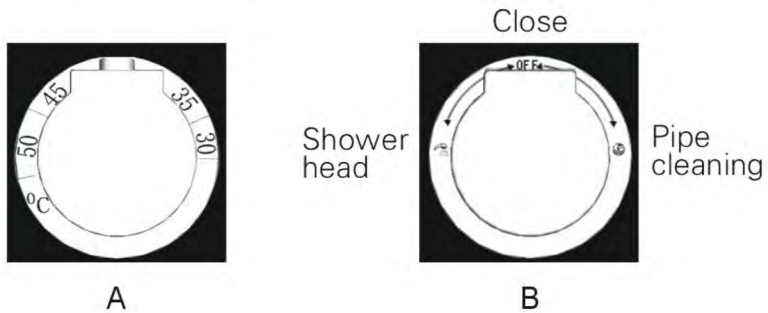
Spare part	Massage pump	Ozone machine	Bottom light	Thermostatic	Electromagnetism valve	PC control panel	Loudspeaker	Notes
Rate voltage	AC220-240V/50HZ		DC12V			AC220V/50HZ		
Rate voltage	AC110-120V/60HZ		DC12V			AC120V/60HZ		
Rate power	1125W		3W				15W	

# Faucet' s usage instruction

## Spare parts

### 1、 Bathtub faucet

- A、 The thermostatic faucet is for both cold and hot water in. In the inlet pipe, the side with red label is for hot water while blue is for cold water. You can adjust the temperature according to the temperature mark in the faucet.
- B、 B is the function conversion. Turn 90 °C left is the shower head while 90 °C right is the pipe cleaning function.



### 2、 Water pressure massage

The effect of the water pressure massage is control by the pressure of water and air loop. It is control by the control panel. The control methods please see to the instructions of control panel.

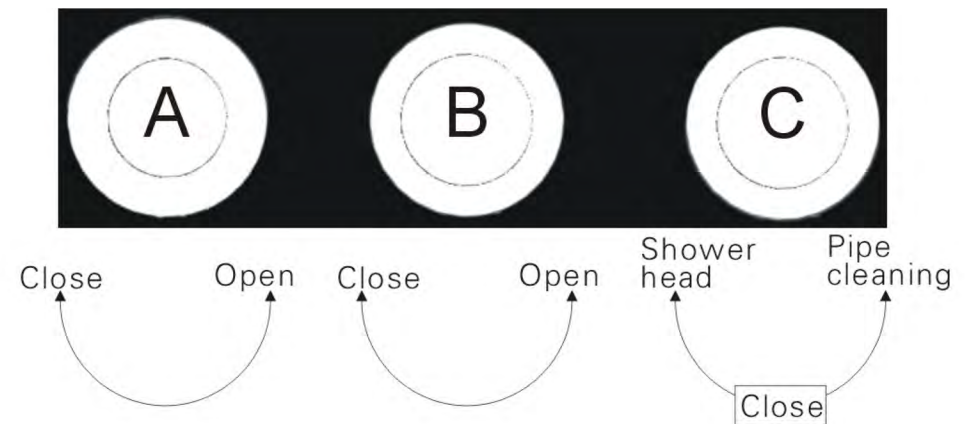
# Faucet' s usage instruction

## Optional

### 1、 Bathtub faucet

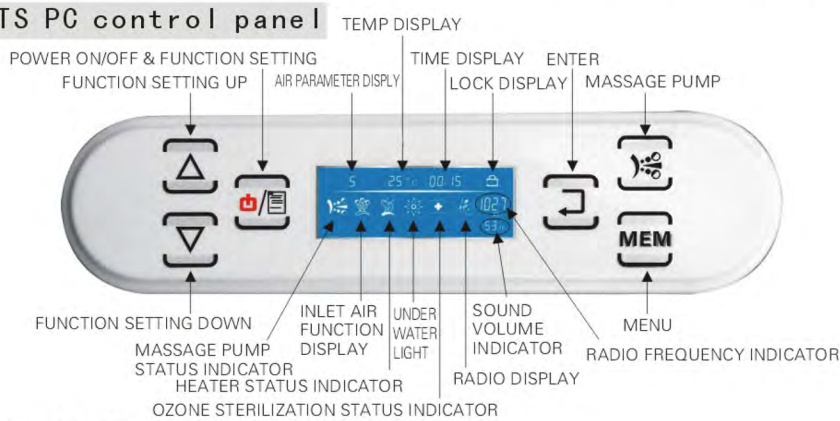
Three sets of the faucet:

- A、 The water-in pipe where with red label is hot water, and the hand-hold faucet with label H is also hot water. Turning left could alternate the volume of the hot water. The maximum is 90°C to the left.
- B、 The water-in pipe where with blue label is cool water, and the hand-hold faucet with label C is also cool water. Turning left could alternate the volume of the cool water. The maximum is 90°C to the left.
- C、 Function conversion value, Turn 90 °C left is the shower head while 90 °C right is the pipe cleaning function.



# TS Control panel usage instruction

## TS PC control panel



## Basin functions:

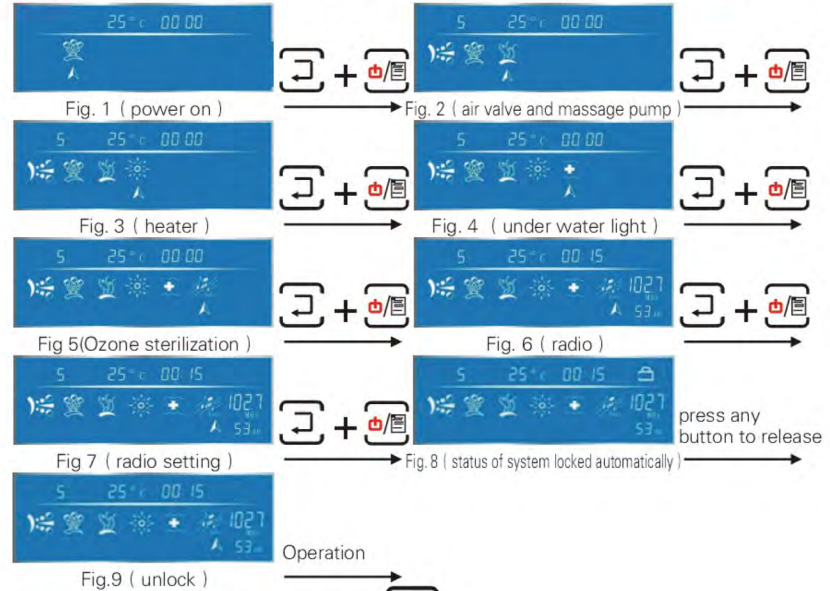
1. The induced button clicks when valid operation, but there is no response if invalid operation.
2. LCD display.
3. Radio function.
4. Massage pump is controlled by the water level.
5. Heater function is available. Water temp is adjustable and it is controlled by water level and massage pump.
6. Underwater light.
7. INLET AIR FUNCTION is controlled by massage pump and water level.
8. Water temp display.
9. Ozone sterilization is controlled by water level.
10. Working time display.

## Operation instruction

### 1、POWER ON/OFF & FUNCTION SETTING

When unit is powered on, press button on control panel in 1 second, all function buttons are on or off operation phase. System will be deactivated after 1 hour automatically unless be turned off first manually by press button again in 1 second. All function will be off accordingly. When the system is activated, press button shortly (less than 1 second) and enter into function setting status. Then the function icon is flashing on the control screen and sign is shown under this function button. Press Enter button to activate the function with sign underneath. The icon will not

Flash if the function is on. Press button again and sign will move to the next function button, which will flash accordingly. Then press Enter button to activate this function with sign. And the rest function may be deduced by analogy.



### 2、MESSAGE PUMP

Press button on the control panel and the massage pump start running. Press this button again to shut off the massage pump. The massage pump is controlled by the water level. When the water level does not reach the position for the sensor, there is no response by pressing button and the massage pump is not available.

### 3、ENTER







If any functional button is on, press ENTER button to shut off this function. If any functional button with icon underneath is flashing, press Enter button to activate it.

### 4、MENU






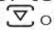
When the radio opens, press MENU button to converse the operations of frequency adjustment or desired channels stored down.

# TS Control panel usage instruction



## 5、FUNCTION SETTING UP

During radio frequency display phase, press  to increase frequency. Press  for more than 1 second; enter into automatic channel up search status. It will stop till next available channel comes up or end up to upper limit 108.0MHz.  
During sound volume display phase and system in FM channel manual search status, press  to increase volume. Press  for more than 1 second, sound volume increases quickly and stops if releasing or till the upper limit.  
During temp display phase, press  to increase heating temperature, from 20~45. System presents water temp to be 40° C by default.  
( Note: If no any function icon is flashing, press  only to increase the sound volume. )

## 6、FUNCTION SETTING DOWN

During radio frequency display phase, press  to decrease frequency. Press  for more than 1 second; enter into automatic channel down search status. It will stop till next available channel comes up or end up to lower limit 87.50MHz.  
During sound volume display phase and system in FM channel manual search status, press  to decrease volume. Press  for more than 1 second, sound volume decreases quickly and stops if releasing or till the lower limit.  
During temp display phase, press  to decrease heating temperature, from 20~45. System presents water temp to be 40° C by default.  
( Note: If no any function icon is flashing, press  only to decrease the sound volume. )

## Underwater light


When  icon is directing at  function icon, press Enter button for the first time and red light is on. Press Enter button for the second time, red-green light is on; third time, green light on; fourth time, green-blue light on; fifth time, blue light on; sixth time, blue-red light on. Press Enter button for the seventh time, underwater light enters into different colors changing in sequence.  
The underwater light cycles in this sequence: red, red-green, green, green-blue, blue and blue-red.  
Press Enter button for the eighth time to deactivate underwater light.

## Inlet air function display



When  icon is directing at  functional icon, press Enter button, massage pump A starts running. Meanwhile, one inlet valve is open and inlet air parameter displays 1. Press Enter button from 2nd to 4th time, two to four inlet valves are open and inlet air parameter display 2 to 4. Press Enter button in 5th time, inlet valve is open in sequence for every 3 seconds and inlet air parameter display 5. Press Enter button in 6th time, all inlet valves are open for every 2 seconds and



close for every 1 second and inlet air parameter display 6. Press Enter button for the 7th times, all the inlet valves close and no parameter display, but massage pump keeps running.

The inlet air function cycles in this sequence: one valve, two valves, three valves, four valves, three valves, two valves and one valve.

(Note: If water level in the bathtub does not reach the position for the water level sensor, there is no any response by pressing  icon.)

## LOCK DISPLAY

When the display panel is on non-operational phase for 30 seconds, the panel will be locked automatically. Meanwhile, LCD screen display lock indicator icon  on the top right corner. Then no response is from the panel by any short press (less than 1 second). Press any icon on the display panel by long press (normally 1 second) to unlock the panel and the lock indicator icon  will disappear. Then all function buttons are on operation phase.

**TIME DISPLAY:** When the display panel is on operation phase, the time display presents  for timing. System will be deactivated automatically after the system has run for 1 hour . Press power on/off button by long press to activate the system again.


**Automatic drainage function:** When the system is off, open the waste and the water drains out automatically. When the water level is below the position for the water level sensor, drain solenoid valve of few products is open for 30 minutes. This function requires no direct operation.

**Light in the front panel for few products:** When the system is activated, light in the front panel for few products is on at the same time. As soon as the deactivation, the system and light in the front panel is off automatically. This function requires no direct operation.

**Special operational instruction for the heater:** Press Enter button to activate heater function when the control screen is shown as the Fig. 2 and the heater function icon  is flashing. When heater is functioning, temp setting icon flashes. Use  and  buttons

to set the desired temperature, from 20~ 45. The temp setting is not available when the temp icon does not flash. System presets water temp to be 40 by default. When the massage pump is not working, heater function is not available.

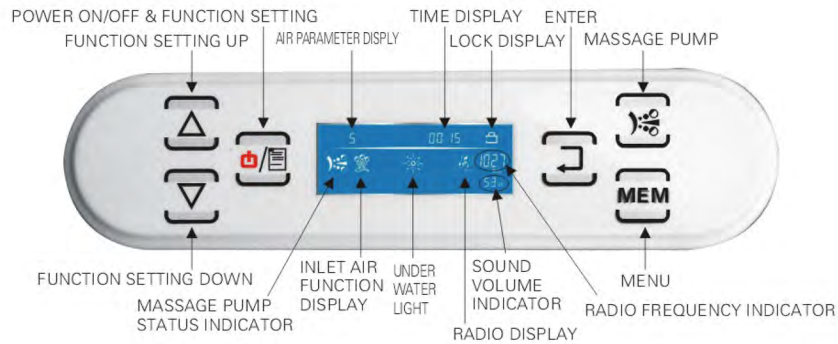
## Special operational instruction for the Ozone sterilization:

Press Enter button to activate ozone sterilization function when the control screen is shown as the Fig. 4 and the heater function 

icon is flashing. When the water level does not reach the position for the sensor, no response is from the button and ozone sterilization is not available.

# TS-1 Control panel usage instruction

## TS-1 PC control panel











## Basin functions:

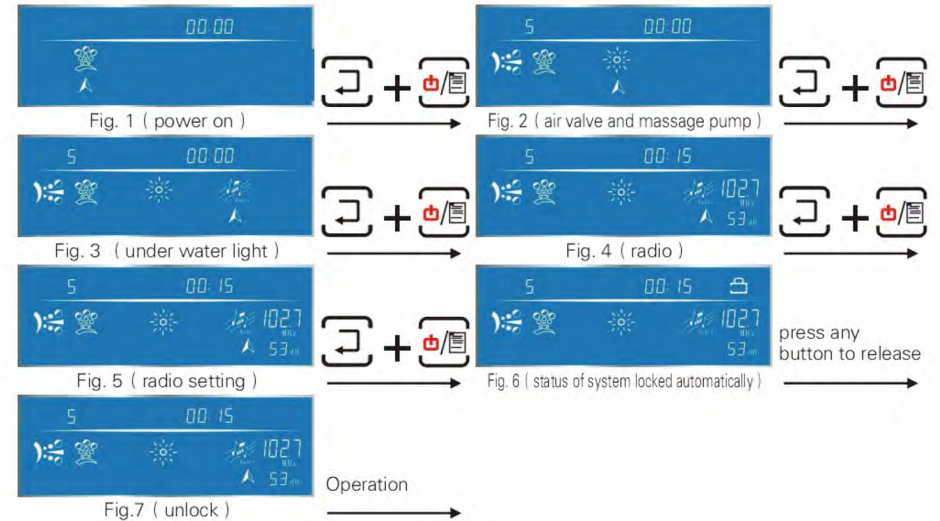
1. The induced button clicks when valid operation, but there is no response if invalid operation.
2. LCD display.
3. Radio function.
4. Massage pump is controlled by the water level.
5. Underwater light.
6. INLET AIR FUNCTION is controlled by massage pump and water level.
7. Working time display.

## Operation instruction


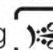
### 1、POWER ON/OFF & FUNCTION SETTING

When unit is powered on, press  button on control panel in 1 second, all function buttons are on or off operation phase. System will be deactivated after 1 hour automatically unless be turned off first manually by press  button again in 1 second. All function will be off accordingly. When the system is activated, press  button shortly (less than 1 second) and enter into function setting status. Then the function icon is flashing on the control screen and  sign is shown under this function button. Press Enter button to activate the function with  sign underneath. The icon will not

Flash if the function is on. Press  button again and  sign will move to the next function button, which will flash accordingly. Then press Enter button to activate this function with  sign. And the rest function may be deduced by analogy.



### 2、MESSAGE PUMP

Press  button on the control panel and the massage pump start running. Press this button again to shut off the massage pump. The massage pump is controlled by the water level. When the water level does not reach the position for the sensor, there is no response by pressing  button and the massage pump is not available.

### 3、ENTER

If any functional button is on, press ENTER button to shut off this function. If any functional button with  icon underneath is flashing, press Enter button to activate it.



### 4、MENU



When the radio opens, press MENU button to converse the operations of frequency adjustment or desired channels stored down.



# TS-1 Control panel usage instruction



## 5、FUNCTION SETTING UP



During radio frequency display phase, press  to increase frequency. Press  for more than 1 second; enter into automatic channel up search status. It will stop till next available channel comes up or end up to upper limit 108.0MHz.

During sound volume display phase and system in FM channel manual search status, press  to increase volume. Press  for more than 1 second, sound volume increases quickly and stops if releasing or till the upper limit.

( Note: If no any function icon is flashing, press  only to increase the sound volume. )


## 6、FUNCTION SETTING DOWN

During radio frequency display phase, press  to decrease frequency. Press  for more than 1 second; enter into automatic channel down search status. It will stop till next available channel comes up or end up to lower limit 87.50MHz.

During sound volume display phase and system in FM channel manual search status, press  to decrease volume. Press  for more than 1 second, sound volume decreases quickly and stops if releasing or till the lower limit.

( Note: If no any function icon is flashing, press  only to decrease the sound volume. )



## Underwater light

When  icon is directing at  function icon, press Enter button for the first time and red light is on. Press Enter button for the second time, red-green light is on; third time, green light on; fourth time, green-blue light on; fifth time, blue light on; sixth time, blue-red light on. Press Enter button for the seventh time, underwater light enters into different colors changing in sequence.


The underwater light cycles in this sequence: red, red-green, green, green-blue, blue and blue-red.

Press Enter button for the eighth time to deactivate underwater light.



## Inlet air function display



When  icon is directing at  functional icon, press Enter button, massage pump A starts running. Meanwhile, one inlet valve is open and inlet air parameter displays 1. Press Enter button from 2nd to 4th time, two to four inlet valves are open and inlet air parameter display 2 to 4. Press Enter button in 5th time, inlet valve is open in sequence for every 3 seconds and inlet air parameter display 5. Press Enter button in 6th time, all inlet valves are open for every 2 seconds and close for every 1 second and inlet air parameter display 6. Press Enter button for the 7th times, all the inlet valves close and no parameter display, but massage pump keeps running.

The inlet air function cycles in this sequence: one valve, two valves, three valves, four valves, three valves, two valves and one valve.

(Note: If water level in the bathtub does not reach the position for the water level sensor, there is no any response by pressing  icon.)

## LOCK DISPLAY

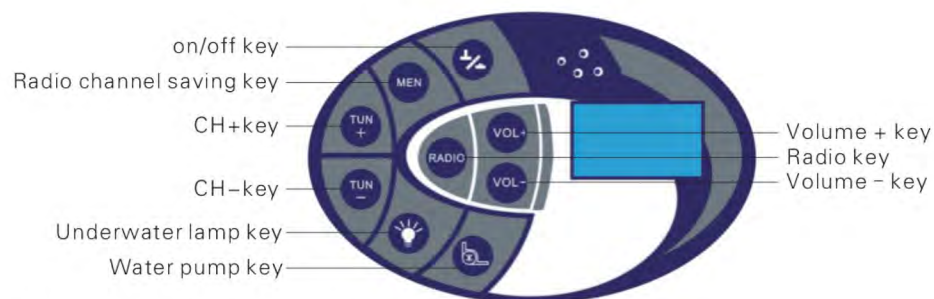
When the display panel is on non-operational phase for 30 seconds, the panel will be locked automatically. Meanwhile, LCD screen display lock indicator icon  on the top right corner. Then no response is from the panel by any short press (less than 1 second). Press any icon on the display panel by long press (normally 1 second) to unlock the panel and the lock indicator icon  will disappear. Then all function buttons are on operation phase.

**TIME DISPLAY :** When the display panel is on operation phase, the time display presents  for timing. System will be deactivated automatically after the system has run for 1 hour . Press power on/off button by long press to activate the system again.

**Automatic drainage function:** When the system is off, open the waste and the water drains out automatically. When the water level is below the position for the water level sensor, drain solenoid valve of few products is open for 30 minutes. This function requires no direct operation.

**Light in the front panel for few products:** When the system is activated, light in the front panel for few products is on at the same time. As soon as the deactivation, the system and light in the front panel is off automatically. This function requires no direct operation.

# CL、CW1 Control panel usage instruction



## 1、 on/off key

The control system will be on once you press the on/off key, press the key again will shut down the system. By default setting, the system will shut down automatically after 60 minutes running.

(As illustrated Picture 1)



Picture 1

## 2、 Radio channel saving key

Press this key less than 1 second will select the channel saving on it. Press one more time can reset the channel. Press the key for more than 1 second the current channel frequency will be saved in this position.(As illustrated Picture 2)



Picture 2

## 3、 CH+key

When radio is on press the key will enter the frequency sourcing state, press this key again to increase the frequency, hold on for more than 1 second, it will be increased automatically until one channel is found finally, or reaching 108MHz.maximum.

## 4、 CH-key

When radio is on, press the key will enter the frequency sourcing state, press this key again to decrease the frequency, hold on for more than 1 second, it will be decreased automatically until one channel is found finally, or reaching 87.5MHz minimum.

## 5、 Underwater lamp key

Press this key to turn on/off the underwater lamp, press once, red light on, twice, red-green light on, third, green light on, forth, green-blue light on, fifth, blue light on, sixth, blue-red light on, seventh, all the color become circulation with an interval of 2 seconds, The sequence of the lights are red, red-green, green ,green-blue, blue, blue-red. The eighth time press will turn off the underwater lamp.

## 6、 Water pump key

Press this key to turn on/off the water pump when the system is on, and it will automatically check the water level, if there is no enough water in the tub, the water pump will deny running. When the pump is on the frame of the key will shining. Press the key again will shut the pump down. If the water lever goes lower than the sensor in the use of the bathtub, the pump will shut down automatically and the whole key will shin. The pump will refuse to restart before the water lever become normal.

(As illustrated Picture 3)



Picture 3

## 7、 Volume + key

When the radio is on, press the VOL+ and the icon will display, press VOL+ again, the volume will be increased automatically, hold it for more than 1 second, the volume will increase quickly till you release the key or the volume reach the max.



Picture 4

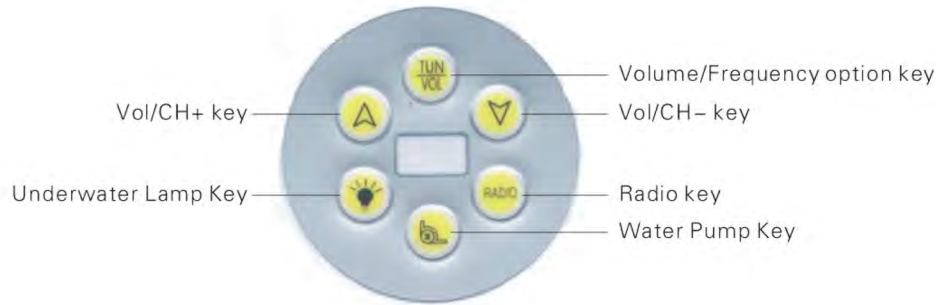
## 8、 Radio key

Press Radio key on/off to turn on/off the radio.(As illustrated Picture 4)

## 9、 Volume - key

When the radio is on, press the VOL- and the icon will display, press VOL- again, the volume will be decreased automatically, hold it for more than 1 second, the volume will decrease quickly till you release the key or the volume reach the min.

# CW Control panel usage instruction



## 1、 Vol/CH+ key

When the radio is on, press this key to increase the volume when the icon display, hold it for more than 1 second, the volume will be increased automatically till you release the key or the volume reach the Max, press this key to increase the frequency when the icon display, hold it for more than 1 second, the frequency will be increased automatically till one channel be found, and the frequency range from 87.5MHZ to 108MHZ.

## 2、 Underwater Lamp Key

Press this key to turn on/off the underwater lamp, press once, red light on, twice, red-green light on, press the third time, green light on, press the forth time, green-blue light on, press the fifth time, blue light on, press the sixth time, blue-red light on, press the seventh time, all the color become circulation with an interval of 2 seconds, when press the key eighth time, the underwater lamp is turned off.

## 3、 Volume/Frequency option key

This key for repeat used, when radio is on, you can press TUN/VOL to make an option between frequency and volume, when you press the key, the icon 1 or 2 icon will show out. The icon 1 mean you can adjust the volume of the radio and the icon 2 mean you can adjust the frequency of the radio.

## 4、 Vol/CH- key

When the radio is on, press this key to decrease the volume when the icon display, hold it for more than 1 second, the volume will be decreased automatically till you release the key or the volume reach the Min, press this key to decrease the frequency when the icon display, hold it for more than 1 second, the frequency will be decreased automatically till one channel be found. The frequency range from 87.5MHZ to 108MHZ.

## 5、 Radio key

Press radio key on/off to turn on/off the radio.  
(As illustrated Picture 2)

## 6、 Water Pump Key

Press this key to turn on/off the water pump when the system is on, and it will automatically check the water level, if there is no enough water in the tub, the water pump will deny running. When the pump is on, the frame of the key will shining. Press the key again will shut the pump down. If the water lever goes lower than the sensor in the use of the bathtub, the pump will shut down automatically and the whole key will shin. The pump will refuse to restart before the water lever become normal.

80

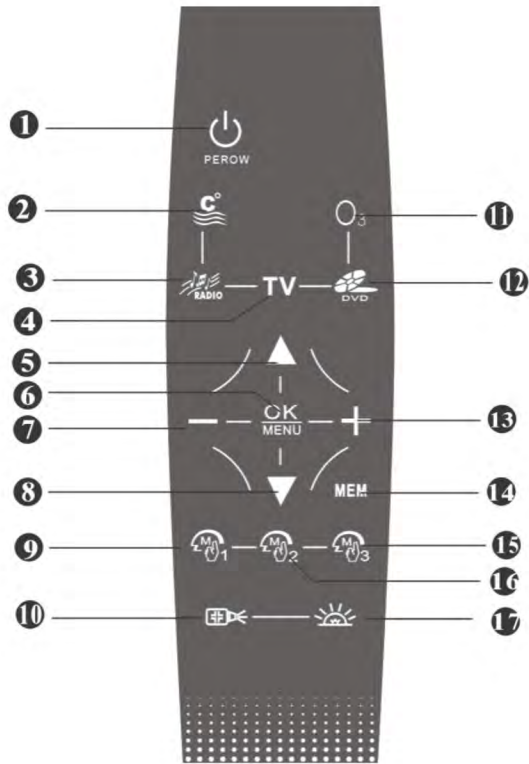
Picture 1

88.8 MHz

Picture 2

drawing 3

# CT Control panel usage instruction



- |                                  |                                  |
|----------------------------------|----------------------------------|
| ① ..... Power key                | ⑩ ..... Water pump key           |
| ② ..... Constant temperature key | ⑪ ..... Ozone disinfection key   |
| ③ ..... Radio key                | ⑫ ..... DVD key                  |
| ④ ..... TV key                   | ⑬ ..... Data+ key                |
| ⑤ ..... Upward key               | ⑭ ..... Radio channel saving key |
| ⑥ ..... Function setting key     | ⑮ ..... Mode 3                   |
| ⑦ ..... Data- key                | ⑯ ..... Mode 2                   |
| ⑧ ..... Downward key             | ⑰ ..... Lamp key                 |
| ⑨ ..... Mode 1                   |                                  |

## 一、Function brief introduction

- |                |                      |                 |
|----------------|----------------------|-----------------|
| 1.Light        | 2.Ozone disinfection | 3.Radio         |
| 4.TV           | 5.DVD                | 6.Water massage |
| 7.Thermostatic |                      |                 |



The schematic diagram of touching area



Control panel




The back of control panel

## 二、Users Manual



- When installing whirlpool bathtub, please do not make the display panel under the shower head or water curtain, otherwise, the computer system may consider there is button-press on touching panel.
- The display panel is of touch-feel recognition operation, made of glass. Please do not press it strongly. The range of display panel is showed at the picture "The schematic diagram of touching area".
- When you turn on some function, the related button turn green; when you turn off the functions, the related button becomes white color.

### 1、Power on/off



#### ①、Power on

Press the touching area of control panel more than 3 seconds; the screen display will appear as showed in Picture 1. The power button (  ) is in red, which means the computer system is off. There will be not response if press the function button in such situation.


## CT Control panel usage instruction

If pressing the power button for 10 seconds, the power button will change from red into green (  ), which means the system runs. Meanwhile, the background light is opened. If there is no operation in 10 seconds, the system will shut down the menu display. If pressing the power key (  ) at the back of control panel or remote control, you can open the system directly.


### ②、Power off

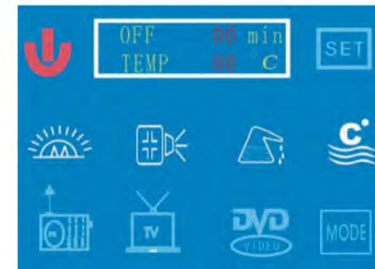
Press the power key (  ) at the back of the control panel or (  ) key in the remote control panel to make it turn from green to red, the system will be closed as a result. The touch screen will be closed as well if there is no operation with 10 seconds. The system will be closed automatically if the using time is up to 120 minutes.

### 2、Water pump function

Press the pump key (  ) in the touch screen or at the back of the remote control when the bathtub is full of water, the pump will be started. Press the pump key again; the pump will be shut off. The pump key will become red color and flash if there is not enough water in the bathtub. The pump will be closed automatically after 45 minutes.

### 3、Thermostatic function

Press the thermostatic key (  ) in the touch screen or at the back of the remote control to start thermostatic function (25°C--45°C). It will shut down temporarily if there is not enough water in the tub, and start to work again when the bathtub is full with water.




Picture 1








Picture 2

### 4、Light function

Press the light key (  ) in the touch screen or at the back of the remote control to start the under water light function. It will shut down temporarily if there is not enough water in the tub, and start to work again when the bathtub is full with water.

### 5、Mode Selection function

When the power button is on ( picture 1 ), press the mode key (  ) will start the mode selection function (picture 2).

- ( 1 ) Mode reservation, press MOD1, MOD2, MOD3, choose the mode you want and reserve it by pressing the memory key (  ).
- ( 2 ) Turn on the Mode, Press MOD1, MOD2, or MOD3 for selection. Use ON key to start the Mode and the function related.
- ( 3 ) The saved-parameters in Mode includes: the state of the water pump, thermostatic, radio, TV, and DVD, the temperature of the thermostat, the radio channel, the TV channel and the TV volume and so on.
- ( 4 ) Press the key  or  or  on control panel, you can start the reserved model directly.

# CT Control panel usage instruction

## 6、Multimedia function

Power on the bathtub, touch the following three keys, you can start Radio, TV, DVD (DVD is only for system switch video signal and audio signal, it can't control DVD directly). If using remote control, you can press the TV, DVD, or FM key to enter into the corresponding function.



TV switch




DVD switch



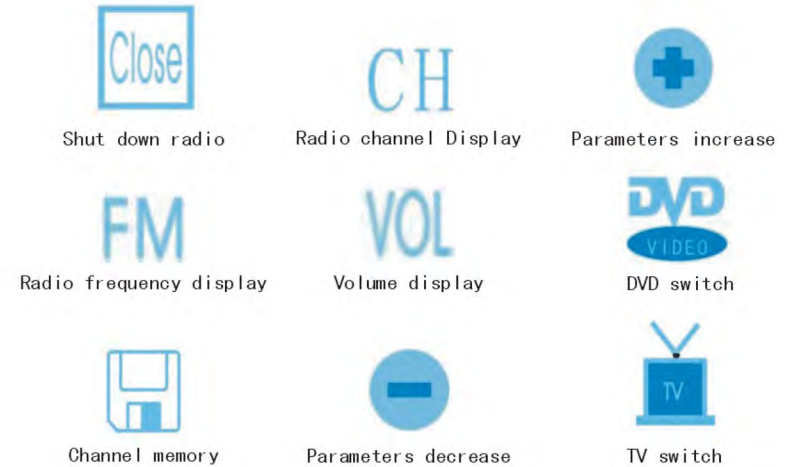
Radio switch

## 7、Radio function


Under the circumstance of radio mode ( Picture 3), the system will choose the latest listened channel frequency and volume. By choosing CH, FM, and VOL, the cursor (  ) will move to the corresponding parameters, you can then change the current channel, frequency and volume through the - key and + key.




Picture 3




A、 Channel increase and decrease

When the cursor (  ) stay on the channel parameter, you can choose the radio channel by keys + and - .

B、 Frequency





When the cursor (  ) stay on the frequency parameter, You can search the frequency by keys + and - . The frequency is changed by unit of 0.1MHz. If you keep pressing + or - more than 0.5 second, the system will search the channel up or down automatically by unit of 0.1MHz until one channel is found or it reaches the Max or Min.

C、 Volume

When the cursor (  ) stay on the volume parameter, press + or - key will turn up or turn down the volume. Keep pressing the + or - key will increase or decrease the volume continually.

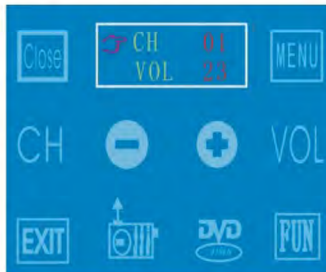
# CT Control panel usage instruction

## 8、 Radio channel saved function

When the radio mode is on, you can use reservation key (  ) to save Max 20 channels from 87.5–108MHz. The saving process have 3 steps; 1. press the FM key to make the cursor (  ) stay on the frequency parameter, 2. Press + or - key to search the channel. 3. When you find one frequency you love, press MEM in remote-control or reservation key (  ) in control panel, the frequency will be saved in current channel number and the number will increase one. Repeat the step 2 and 3 you can save maximum 20 channels. After that you can select the channel by pressing the CH key to make the cursor (  ) stay on the channel parameter and then pressing + or - key to find the channel number you have saved.

## 9、 TV function



The system will choose the last used channel automatically when you just enter the TV function. The TV Menu (Picture 4) will appear if you press the touching area in the screen for more than 3 seconds or press OK in the remote control. You can set up the TV for normally using through the following operation.





Picture 4




( 1 ) 、 TV channel up and down:

Touch TV channel key (  ), make the cursor (  ) point to the CH (Picture 4), then press - or + to select the channel, or directly press the channel increase or decrease key in remote control to switch the channel.


( 2 ) 、 TV volume adjusting:

Touch TV volume key (  ), make the cursor (  ) point to the VOL, then press - or + to increase or decrease volume, or directly press the volume increase or decrease key in remote control to operate the volume.

( 3 ) 、 Start radio:



Touch the Radio key (  ) will switch to the radio function.

( 4 ) 、 Start DVD:


Touch the DVD key (  ) will switch to the DVD function.

## CT Control panel usage instruction

( 5 ) 、 Function operation:

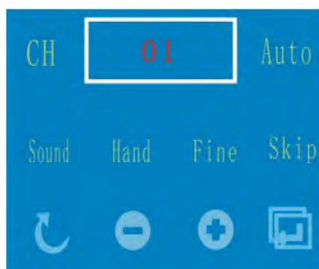
Press function key (  ) to enter the function Menu (Picture 10) you can switch to related functions by touching the related button. Press (  ) can quit the function operation.

( 6 ) 、 Quit the menu:

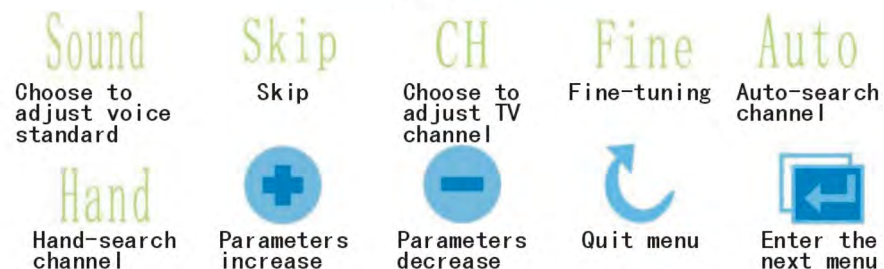
Touch  can quit the Menu, and watch TV normally.

( 7 ) 、 TV channel searching menu:

Under the TV Menu, touch  , will enter TV channel searching Menu. (Picture 5)



Picture 5





A、 Auto-search channel

Touch the **Auto** key will enter auto-search channel, the search will start from down to up. Whenever searching out one TV channel,

the system will save it automatically. During the auto-search, there is a moveable rightward arrow to show the process. After the searching work finishes, The TV will play the first saved channel.



B、 Hand-search channel

Press the **Hand** key and the  or  key, you can search channel up or down manually, the system will stop automatically when it find one channel available.



C、 Fine-tuning

Press the **Fine** key and the  or  key you can adjust channel signal received slightly.



D、 Sound mode

Press the **Sound** key and the  or  key you can choose appropriate Sound System for the current TV channel, to make TV voice clear.

E、 Skip

Press the **Skip** key you will start the skip function. Now press  key the current channel will be skipped after you exit from the menu. In the future, when you switch channel by pressing the channel increase or decrease key in remote control, the system will skip this channel. Press  key under the TV channel searching Menu can cancel the skip. With the skip function, you can avoid some channels with weak signal when you select the channel by remote control.


F、 Channel increase

Press the **CH** key and the  or  key you can turn on all channels including the skipped-one. This function is usually used together with skips function.



# CT Control panel usage instruction

## 10、 Audio system menu


In the menu of TV channel searching, press the  key or the OK key in the remote control, you can enter into audio system Menu ( Picture 6).In the Menu of audio system, press the channel increase and decrease key in remote control, you can switch between the Alt and Woof. Press the volume increase and decrease key can adjust the value of the Alt and Woof. The setting range is from 0 to 14 Db.

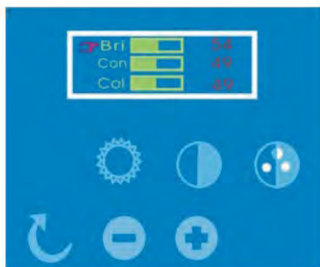


Higher sound  
Lower sound

Picture 6

## 11、 Video mode menu


In audio system Menu, press the  key will enter into the video mode Menu (Picture 7). Press the channel increase and decrease key in remote control, you can select the project you want to adjust. Press the volume increase and decrease key can adjust the value of the project.




The adjustable range of each item:  
Bright the best is 50  
Contrast the best is 50  
Color the best is 50

Picture 7

## 12、 Quit menu setting


After finishing every operation, press the  key or OK key in remote control to quit the Menu setting directly.

## 13、 DVD function

When the TV is on, press  in display panel or in remote control can enter DVD play state. Using channel + key and - key in remote control can adjust the volume. The Menu operation method of DVD state is as same as TV state.

## 14、 Function setting menu ( preview )

A、 Enter method

Press  key to enter function Menu setting function directly before starting TV, radio and DVD.(Picture 8)

B、 Specific operation

This Menu is set up for easy the users to operate the function of water pump and light when using FM, TV and DVD state. The operation of the functions is as same as the operation of the boot Menu. (Picture 9)




Picture 8




Picture 9

## CT Control panel usage instruction


### 15、Parameters setting

After turning on the bathtub, if the boot Menu or function Menu is showed, you can press OK key in the remote control or press  key to start parameters setting (Picture 10).

Under different functions, you can adjust the parameters by – or + key. If without any operation in 8 seconds, the system will quit this parameter set Menu. Press  key or OK key in remote control will return to the previous Menu.



Automatic close time (60–120 minutes)  
Thermostatic temperature setting range( 25–43°C)

Ozone: When the water is full, press the icon  can start or shut down the Ozone function.  
The time for the ozone is about 10 Min.

Picture 10

### 16、Menu function and special instruction

When TV is on, if receiving a weak channel signal, and you need to start the menu function, The weak channel signal will be closed temporarily to avoid the display obstruction.

### 17、Factory menu

Factory Menu is used when the product is tested in the factory.  
Enter method: when TV is playing, enter TV search Menu (as mentioned above), press SKIP key more than 2 seconds, the Factory Menu will appear(Picture 11). In factory Menu, you can set AGC, TV system, Sound system with the help of icon – or +.



Picture 11

AGC: auto–gain control value  
VIF: Intermediate frequency value  
Sound: Sound standard

According to the different customers, you can make the following adjustments.

Adjustment of auto:

Choose one weak signal channel, increase or decrease AGC parameter. It will be the best when it just appears snowflake in screen.

Choice of VIF: Due to the different TV system in different countries, you have to choose different tuners and VIF. It is 38.9 MHz in China, and 45.75 MHz in USA. )

Choice of Sound system: according to different sound systems of each country, you have to choose the different sound intermediate frequency. For example, it is M/N in USA.)

### 18、Safe–control panel

In behind–rightward of the display box, there is a safe control panel, which has four buttons.

The main purpose to set up the safe–control panel is to start or shut down the power, pump, thermostat function or other important function when the touch panel is now working.

## Troubleshooting Instructions

Problem	Cause	Solution	Problem	Cause	Solution
The bathtub anomaly shaking and noising	<ol style="list-style-type: none"> <li>1.The under frame of bathtub is imbalance and/or the bolt is not tighten.</li> <li>2.Screws of fixed of pump are not tightened or the clutch damper was missing.</li> <li>3.Idle running on motor.</li> <li>4.Motor failures.</li> </ol>	<ol style="list-style-type: none"> <li>1.Putting the tub on a level surface, leveling the tub by adjusting under frame of the tub, tightening bolt.</li> <li>2.Should be 4 screws of fixed of Pump and 4 clutch damper, all bolts have to be tightened.</li> <li>3.Pour more water until it over flow the sensor.</li> <li>4.Contact you dealer or after-sale services department of EAGO Company.</li> </ol>	Chromatherapy not on	<ol style="list-style-type: none"> <li>1.The plug get off.</li> <li>2.Control circuit board error.</li> </ol>	<ol style="list-style-type: none"> <li>1.Plug in again.</li> <li>2.Contact you dealer or after-sale services department of EAGO Company.</li> </ol>
			Insufficient inflow rate	<ol style="list-style-type: none"> <li>1.The water pressure is too low.</li> <li>2.Water inlet block.</li> </ol>	<ol style="list-style-type: none"> <li>1.Check the water pressure.</li> <li>2.Check and clean the dirty filter</li> </ol>
			Diverter valve is not working	<ol style="list-style-type: none"> <li>1.Gasket of the valve is distortion or damage.</li> </ol>	<ol style="list-style-type: none"> <li>1.Replace a new gasket</li> </ol>
The pump is running, but poor jet action	<ol style="list-style-type: none"> <li>1.The suction net partly blocked.</li> <li>2.Not adequate water level.</li> <li>3.Adjusting valve of function is shut down.</li> <li>4.The inlet pipe of pump exist air.</li> <li>5.Other Probable Cause.</li> </ol>	<ol style="list-style-type: none"> <li>1.Take off the suction net with screwdriver. Clean it to keep the water going through smoothly.</li> <li>2.Pour more water until it over flow the sensor.</li> <li>3.Open the adjusting valve of function.</li> <li>4.a ) Open the washout valve to exhaust the air inside the pipe. b ) Check and tighten all connection part of the inlet pipe. c ) Close the washout valve properly.</li> <li>5.The water pipe and air pipe may be mixed up. Please contact the professional technician to fix it.</li> </ol>	No bubble out from the Hydro-massage jet	<ol style="list-style-type: none"> <li>1.Air pipe block.</li> <li>2.Air pump is switch off.</li> <li>3.Air pump does not operate.</li> </ol>	<ol style="list-style-type: none"> <li>1.Take off the lid of the Hydro-massage jet; clean the small air hole by thin wire.</li> <li>2.Switch on the air pump.</li> <li>3.Follow the "air pump does not operate" instruction process to check the air pump.</li> </ol>
			Water outlet switch leak or does not pop up	<ol style="list-style-type: none"> <li>1.The support screw under the water outlet switch is too tight or falling off.</li> <li>2.The connection rope inside the water outlet switch is broken.</li> <li>3.The gasket is not flat.</li> </ol>	<ol style="list-style-type: none"> <li>1.Take out the water outlet switch; adjust the support screw to proper point.</li> <li>2.Replace whole set of the water outlet switch.</li> <li>3.Reinstall the water outlet switch; make sure the gasket is flat.</li> </ol>
			Some water left inside the pipe	Some models of bathtub can not drain all water out from the pipe because of its special construction.	
Water pump or air pump does not operate	<ol style="list-style-type: none"> <li>1.The voltage is unusual or the power is out.</li> <li>2.The fuse blew out or the earth leakage circuit-breaker is OFF.</li> <li>3.Nothing appears on the panel screen.</li> <li>4.No signal from the water level sensor.</li> <li>5.Baroswitch broken.</li> </ol>	<ol style="list-style-type: none"> <li>1.Plug the power cable into an electrical outlet. Make sure the switch is in "ON" position.</li> <li>2.The fuse or the earth leakage circuit-breaker should be checked or repaired by a professional electrician.</li> <li>3.Contact you dealer or after-sale services department of EAGO Company.</li> <li>4.Pour more water until it over flow the sensor.</li> <li>5.Replace the same model of baroswitch by professional electrician.</li> </ol>			

**ARIEL**

500 West Warner Avenue, Santa Ana, CA

[ArielBath.com](http://ArielBath.com) | [AtlasUSA.net](http://AtlasUSA.net)

Email: [sales@arelbath.com](mailto:sales@arelbath.com) | Phone: 1-714-622-1565