



NOTE: A file guide is available from most reputable tool merchants and is the easiest way to hold the file at the correct position.

- File at an angle perpendicular to the bar, and at an angle of 30° to the direction of travel (Fig. 48).

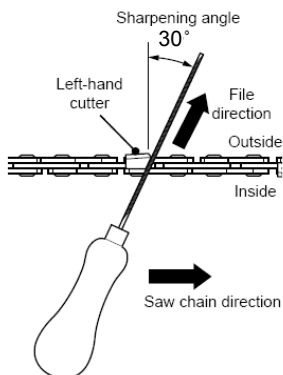


Fig. 48

- File each tooth from the inside towards outside only. File one side of the chain first than turn the saw around and repeat the process.
- Sharpen each tooth equally by using the same number of strokes.
- Keep all cutter lengths equal. Check the safety depth gauge height every 5 sharpenings. If the depth gauges are also trimmed it is essential that the original profile be restored.
- Use a depth gauge measuring instrument to check the height of the depth gauge. Depth gauge measuring jigs are available from most reputable tool merchants (Fig. 49).

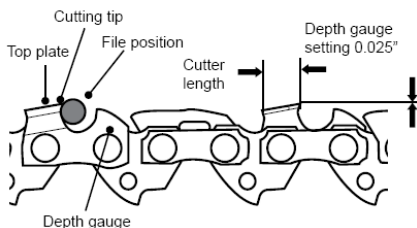


Fig. 49

6. Air filter

Wash the air filter every 25 hours (if too dusty, every 10 hours) with clear water and dry it. Dip the air filter into clean machine oil if necessary. It can be used after superfluous oil is eliminated.

Inspect the air filter regularly. Replace it with a new one if necessary (Fig. 50).

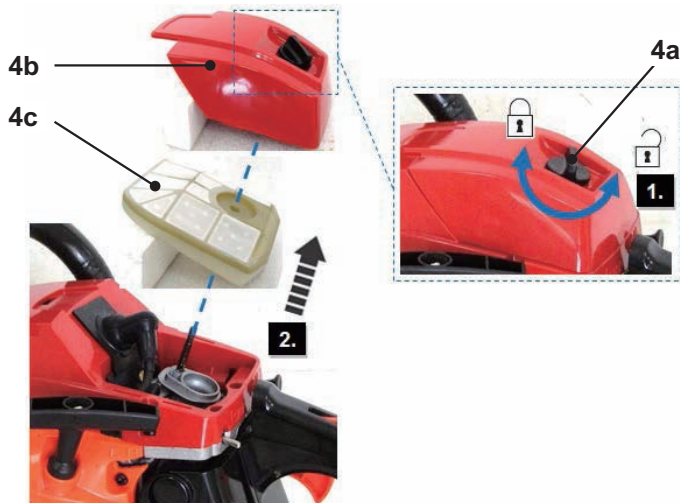


Fig. 50

1. Loosen the fixation knob **(4a)** and remove the cover **(4b)** to open the air filter case **(4)**.
2. Remove the filter **(4c)** and tap it on a solid surface to remove dust.
3. Apply a small amount of air filter oil on the filter **(4c)** to increase the performance of the filter. Wring out surplus oil and put the filter back to the air filter case.
4. Re-attach the cover **(4b)** and secure it with the fixation knob **(4a)**.

7. Spark plug

Inspect the spark plug every 25 hours or prior to long-term storage over 30 days if the use has not been this high. Clean or replace with a new one if necessary.

1. Open the air filter case **(4)** and remove the air filter **(4c)** as described.
2. Disconnect the spark plug connector **(19)** (Fig. 51).
3. Loosen the spark plug **(20)** anticlockwise using the multi tool **(32)** and remove it carefully (Fig. 52).

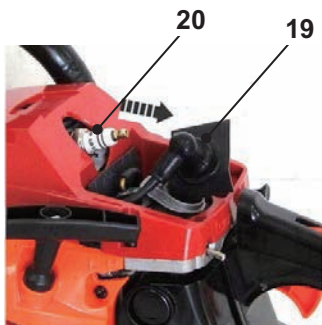


Fig. 51

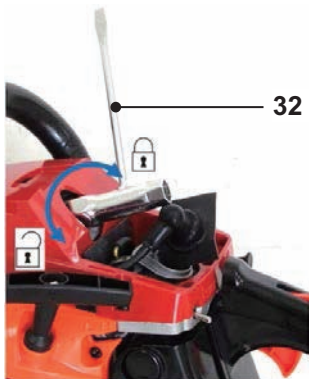


Fig. 52

4. Check the spark plug (20) for damage and wear. The colour of the electrode should be light-brown colored.
5. Remove debris from the electrode with a soft wired brush; avoid heavy cleaning of the electrode.
6. Dry the spark plug with a soft cloth, if it is wet from fuel.
7. Check the spark plug gap. It should be 0.6 - 0.7mm (Fig. 53).

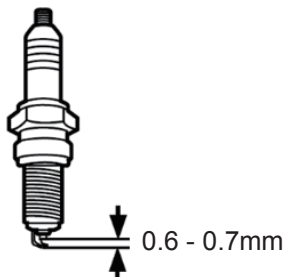


Fig. 53

8. Replace with a new spark plug if either the electrode or the insulation is damaged.
9. When replacing the spark plug, first screw it in hand tight and then lightly tighten it with the multi tool (32).
10. Refit the spark plug connector (19); ensure the rubber pad around the spark plug connector is in correct position.



WARNING! Do not over tighten the spark plug to avoid any damage!

11. Place the filter **(4c)** back into the air filter case **(4)**, re-attach the cover **(4b)** and secure it with the fixation knob **(4a)** afterward.

8. Fuel tank

1. Empty the fuel tank when storing the product over 30 days to prevent the fuel deteriorating.
2. Unscrew and remove the fuel tank cap **(24)** and empty the fuel into a suitable container.



WARNING! Do not store the fuel in the fuel mixing container (31)!

9. Fuel filter

The fuel tank of this product is fitted with a filter, which is attached on the end of the fuel pipe. Ask an authorised service centre or a similarly qualified person to check and replace the filter at regular intervals if required.

10. Carburettor

The carburettor is pre-set by the manufacturer. Should it be necessary to make any changes please contact an authorised service centre or a similarly qualified person. Do not attempt to make any adjustments by yourself.

11. Muffler

If it be necessary to modify or replace the muffler, please contact an authorised service centre or a similarly qualified person.

12. Spare parts/Replacement parts

The following parts of this product may be replaced by the consumer. Spare parts are available at an authorised dealer or through our customer service.

Description	Model no. or Specification
Guide bar	200PXBW095 / 208PXBK095 / Blue Max 8361
Saw chain	20LPX078X / 21PX078X / Blue Max 52209
Spark plug	BM6A L8RTC/Torch L8RTF/NHSP LD L8RTF/BOSCH L7T/TORCH



WARNING! Saw chain must be fitted with guide bar according to above combination. Use only the same brand and same type of saw chain and guide bar as above. The use of non-approved guide bar / saw chain combinations poses a severe risk of injury!

13. Repair

This product does not contain any parts that can be repaired by the consumer. Contact an authorised service centre or a similarly qualified person to have it checked and repaired.

14. Storage

1. Switch the product off and disconnect the spark plug connector.
2. Clean the product as described above.
3. Attach the guide bar cover.
4. Store the product and its accessories in a dark, dry, frost-free, well-ventilated place.
5. Always store the product in a place that is inaccessible to children. The ideal storage temperature is between 10°C and 30°C.
6. We recommend using the original package for storage or covering the product with a suitable cloth or enclosure to protect it against dust.
7. Empty the tank if you are not going to use the product for an extended period of time (more than 30 days) and before storing it for the winter.

15. Transportation

1. Switch the product off and disconnect the spark plug connector.
2. Attach the guide bar cover.
3. Always carry the product by its handles **(1, 5)**.
4. Protect the product from any heavy impact or strong vibrations which may occur during transportation in vehicles.
5. Secure the product to prevent it from slipping or falling over, loss of fuel, damage and injury.

16. Recycling and disposal

1. Old products are potentially recyclable and do not, therefore, belong in your household rubbish. You are requested to assist us and our contribution to

saving resources and protecting the environment by handing in this product at an equipped collection centre (if there is one available).

2. Petrol, oil, used oil, a mixture of oil and petrol and objects soiled with oil e.g. cleaning cloths do not belong in the household rubbish. Dispose of oil-contaminated items in accordance with the local guidelines and hand them in at recycling centres.
3. The product comes in a package that protects it against damage during shipping. Keep the package until you are sure that all parts have been delivered and the product is function properly. Recycle the package afterwards.

TROUBLE SHOOTING

Suspected malfunctions are often due to causes that the user can fix themselves. Therefore check the product using this section. In most cases the problem can be solved quickly.

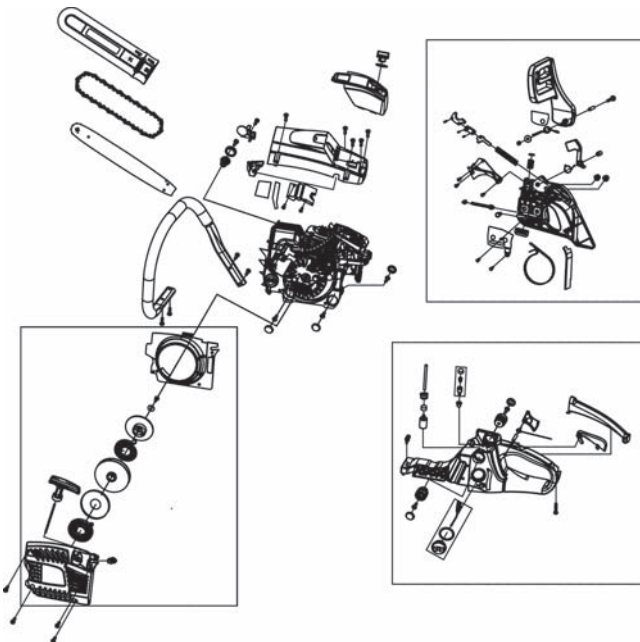
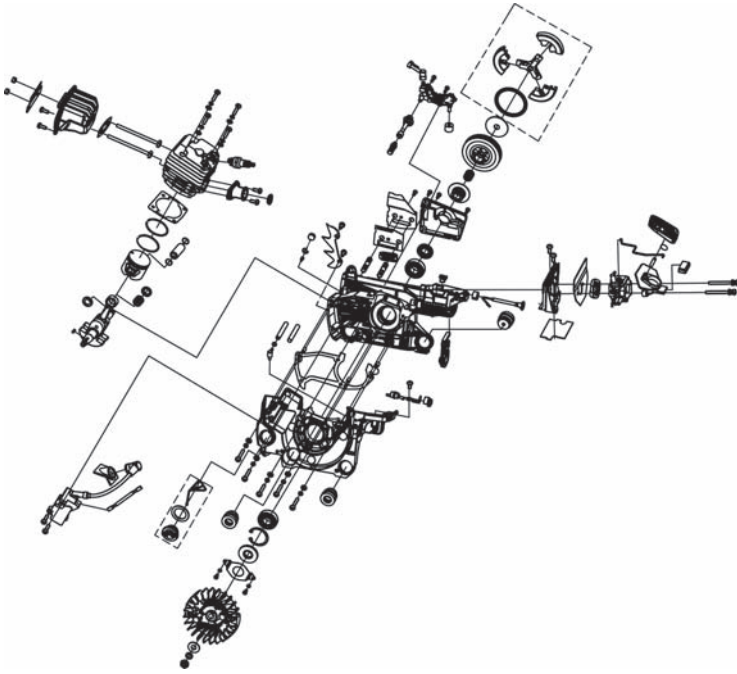


WARNING! Only perform the steps described within these instructions! All further inspection, maintenance and repair work must be performed by an authorised service centre or a similarly qualified specialist if you cannot solve the problem yourself!

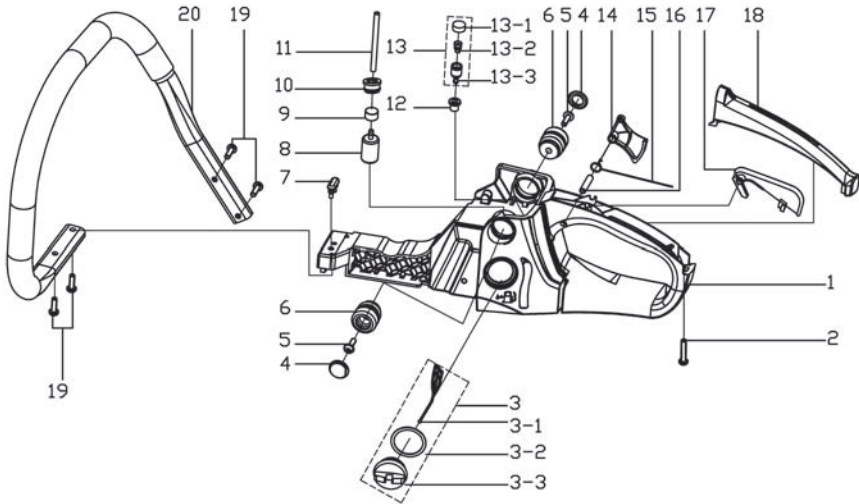
Problem	Possible cause	Solution
1. Engine does not start	1.1. Not enough fuel in fuel tank	1.1. Add fuel
	1.2. Spark plug is wet	1.2. Dry spark plug
	1.3. Spark plug is damaged	1.3. Replace spark plug
	1.4. Spark plug connector lose	1.4. Attach properly
	1.5. Ignition switch is not set to upper position	1.5. Set ignition switch to upper position
	1.6. Air filter is dirty	1.6. Clean air filter
	1.7. Spark plug loose	1.7. Tighten spark plug
	1.8. Spark plug gap is incorrect	1.8. Set gap between electrodes at 0.6 - 0.7mm

	1.9. Carburettor is flooded with fuel	1.9. Remove air filter and pull recoil starter handle continuously until carburettor clears itself and install air filter
	1.10. Faulty ignition module	1.10. Contact an authorised service centre or a similarly qualified person
2. Engine stops	2.1. Not enough fuel in fuel tank	2.1. Add fuel
	2.2. Saw chain is blocked	2.2. Remove blockage
3. Engine difficult to start or loses power	3.1. Dirt, water or stale fuel in the tank	3.1. Drain fuel and clean tank. Fill tank with clean, fresh fuel
	3.2. Air filter is dirty	3.2. Clean air filter
	3.3. Fuel filter/fuel tube clogged/worn	Contact authorised service centre or a similarly qualified person
	3.4. Vent hole in fuel tank cap is clogged	3.4. Clean or replace fuel tank cap
4. Engine operates erratically	4.1. Spark plug is defective	4.1. Install new, correctly gapped plug
	4.2. Spark plug gap is incorrect	4.2. Set gap between electrodes at 0.6 - 0.7mm
	4.3. Air filter is dirty	4.3. Clean air filter
	4.4. Engine requires to warm up	4.4. Allow engine to completely warm up and run at idle speed for 3min minutes

5. Engine idles poorly	5.1. Air filter is dirty	5.1. Clean air filter
	5.2. Air vents are clogged	5.2. Remove debris from vents
6. Engine skips at high speed	6.1. Gap between electrodes of spark plug is too close	6.1. Set gap between electrodes at 0.6 - 0.7mm
7. Engine overheats	7.1. Air vents are clogged	7.1. Remove debris from vents
	7.2. Incorrect spark plug	7.2. Install correct spark plug and cylinder fins on engine
	7.3. Saw chain is blocked	7.3. Remove blockage
8. Unsatisfactory result	8.1. Saw chain is worn	8.1. Have a specialist to sharpen or replace it
	8.2. Saw chain not tensioned properly	8.2. Tension properly
	8.3. Blunt saw chain	8.3. Only cut branches within the limits
	8.4. Improper chain speed	Have a specialist to adjust it
9. Excessive vibration/noise or exhaust	9.1. Saw chain is dull/damaged	9.1. Have it replaced with a new one
	9.2. Bolts/nuts are loosen	9.2. Tighten bolts/nuts
	9.3. Fuel is incorrect	9.3. Empty out unused fuel and refill with the correct fuel

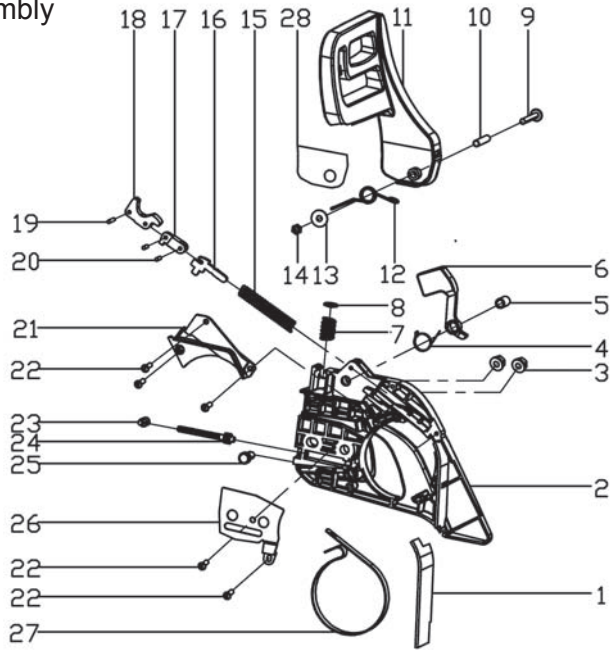


A. Handle, Fuel Tank



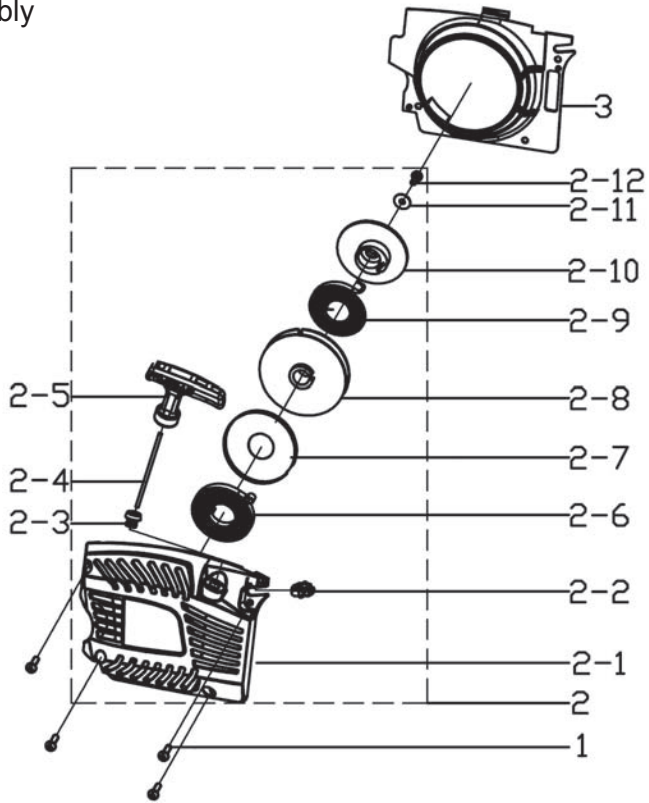
Part No.	Parts Description	Quantity
A1	Fuel Tank	1
A2	Screw St4.2x19	1
A3	Gasoline Tank Cap Assembly	1
A3-1	Fuel Cap Retainer	1
A3-2	Packing Washer	1
A3-3	Fuel Tank Cap	1
A4	Dust Cover	2
A5	Scew M5x16	2
A6	Anti-Vibration Cushion C	2
A7	Damping Block	1
A8	Fuel Filter	1
A9	Increase Block	1
A10	Fuel Tube Base	1
A11	Fuel Tube	1
A12	Block Balancer	1
A13	Balancer Assembly	1
A14	Trigger	1
A15	Trigger Torsion Rod Spring	1
A16	Pin 6x24	1
A17	Trigger Controller	1
A18	Handle Cover	1
A19	Scew St4.8x16	4
A20	Front Handle	1

B. Right Cover Assembly



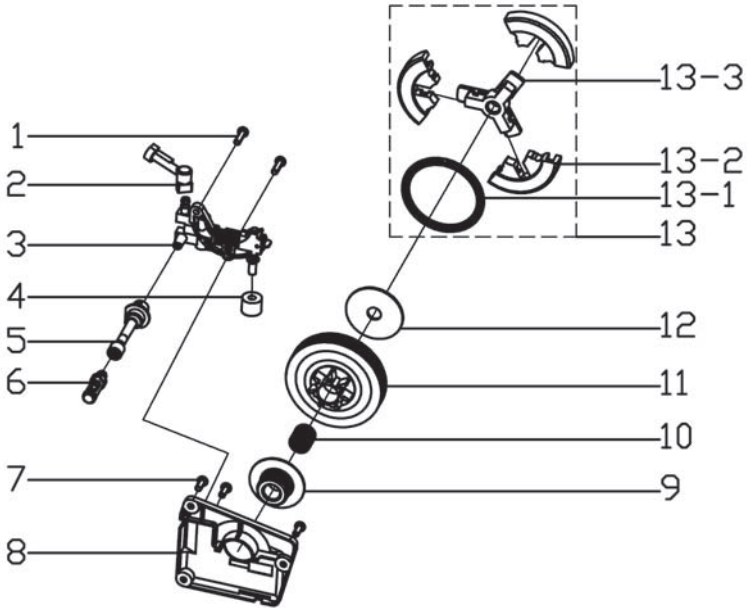
Part No.	Parts Description	Quantity
B1	Dust Oard	1
B2	Right Cover	1
B3	Nut M8	2
B4	Heavy Block Torsion Spring	1
B5	Heavy Block Tube	1
B6	Heavy Block	1
B7	Front Guard Spring	1
B8	Spring Intake	1
B9	Screw M5x37.5	1
B10	Front Guard Tube	1
B11	Front Guard	1
B12	Brake Torsion Rod Spring	1
B13	Flat Washer 5x18x1	1
B14	Nut M5	1
B15	Brake Spring	1
B16	Brake Control Rod	1
B17	Secondary Pull-rod	1
B18	Main Pull-rod	1
B19	Pin 3x14	1
B20	Pin 3x9	2
B21	Brake Spring Pressure Plate	1
B22	Screw St4.2x9.5	5
B23	Tightener	1
B24	Screw M5x50	1
B25	Tightening Gear	1
B26	Tightener Cover	1
B27	Brake Belt	1
B28	Aluminized Paper	1

C. Starter Assembly



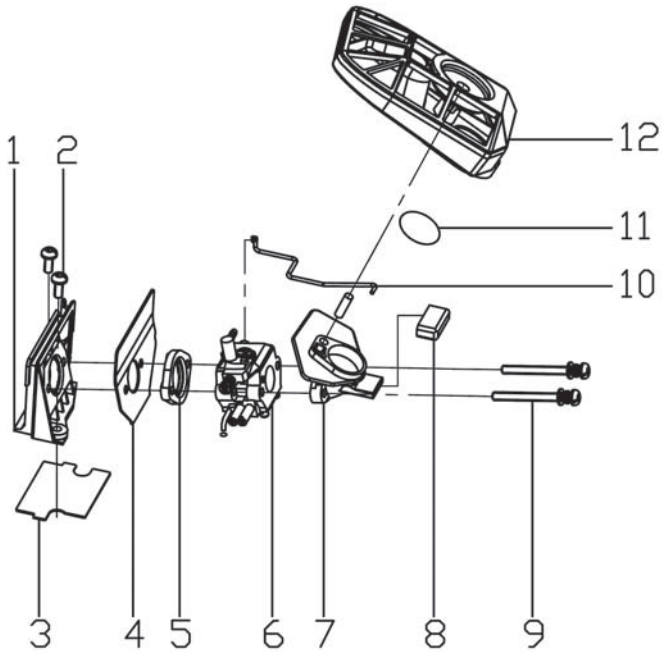
Part No.	Parts Description	Quantity
C1	Screw M5x16	4
C2	Starter Assembly	1
C2-1	Super Easy Starter Cover	1
C2-2	L H Sheathing	1
C2-3	Rope Sheathing	1
C2-4	Starting Rope	1
C2-5	Starting Handle	1
C2-6	Main Coil Spring	1
C2-7	Main Coil Spring Shell	1
C2-8	Reel	1
C2-9	Second Coil Spring	1
C2-10	Starter Wheel	1
C2-11	Flat Washer 5.4x16x1	1
C2-12	Screw St4.8x13	1
C3	Cooling-Air Mask	1

D.Clutch, Oil Pump



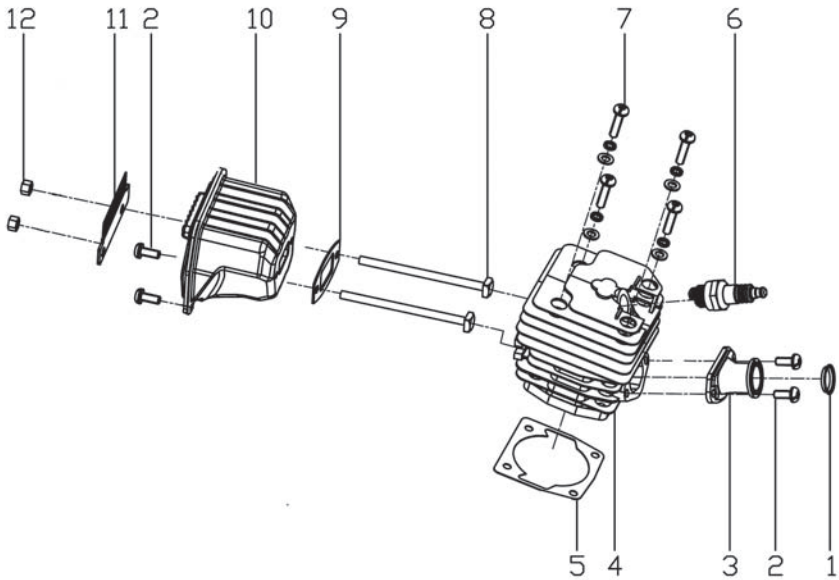
Part No.	Parts Description	Quantity
D1	Screw M4x14	2
D2	Oil Nozzle	1
D3	Oil Pump	1
D4	Sponge Ring	1
D5	Oil Tube	1
D6	Oil Filter	1
D7	Screw M4x10	3
D8	Oil Pump Cover Plate	1
D9	Worm	1
D10	Needle Bearing 12x15x14.5	1
D11	Clutch Shell	1
D12	Clutch Washer	1
D13	Clutch Assembly	1

E .Carburetor, Air Filter



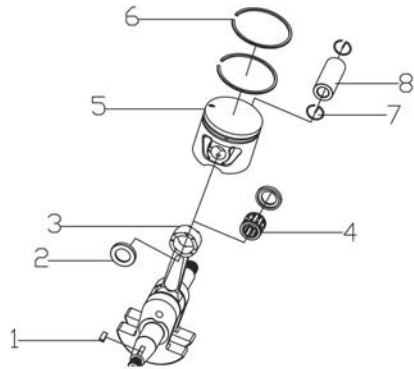
Part No.	Parts Description	Quantity
E1	Air Intake Tube Support	1
E2	Screw M5x12	2
E3	Backing Board	1
E4	Air Intake Tube Gasket	1
E5	Air Intake Flange	1
E6	Carburetor	1
E7	Air Intake	1
E8	Air Intake Cushion	1
E9	Screw M5x52	2
E10	Accelerator Rod	1
E11	Seal Ring	1
E12	Air Filter	1

F. Cylinder, Silencer



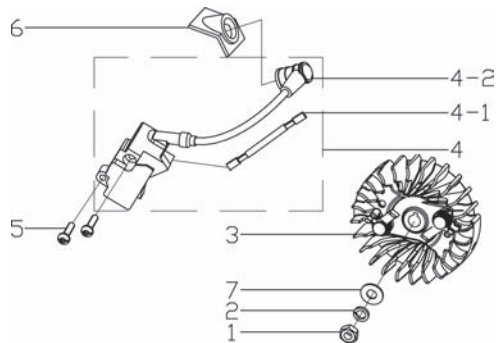
Part No.	Parts Description	Quantity
F1	Retainer Ring	1
F2	Screw M5x12	4
F3	Air Intake Tube	1
F4	Cylinder	1
F5	Cylinder Gasket	1
F6	Spark Plug	1
F7	Screw M5x20	4
F8	Silencer Bolt M5*87	2
F9	Silencer Gasket	1
F10	Catalyst Silencer	1
F11	Silencer Support	1
F12	Nut M5	2

G. Crankshaft, Piston



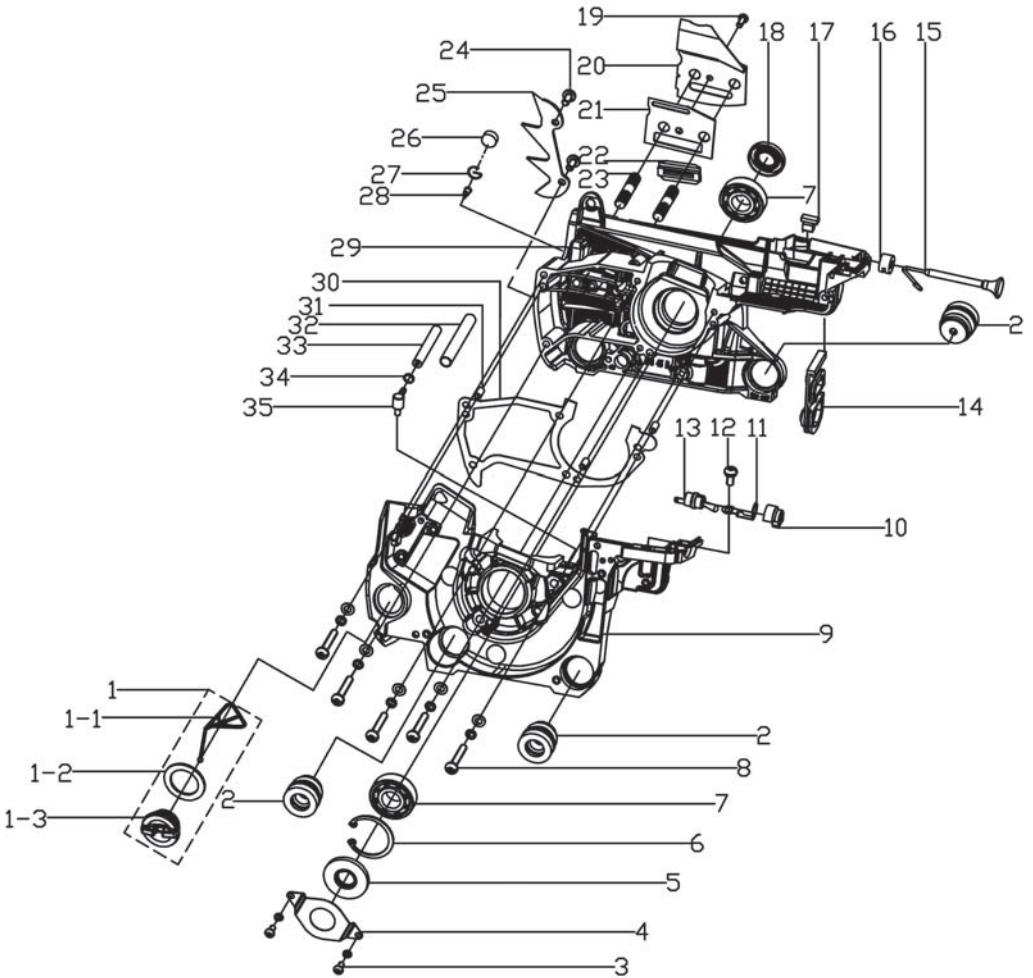
Part No.	Parts Description	Quantity
G1	Woodruff Key M3x10	1
G2	Needle Bearing Ring	2
G3	Crankshaft	1
G4	Needle Bearing 11x15x12.5	1
G5	Piston	1
G6	Piston Ring	2
G7	Piston Pin Circlip	2
G8	Piston Pin	1

H. Flywheel, Igniter



Part No.	Parts Description	Quantity
H1	Nut GB/T 6184 M8	1
H2	Spring Washer GB/T 93 8	1
H3	Flywheel	1
H4	Igniter	1
H5	Screw GB/T 70.1 M5x20	2
H6	Igniter Sheath	1
H7	Flat Washer 10x16x1.5	1

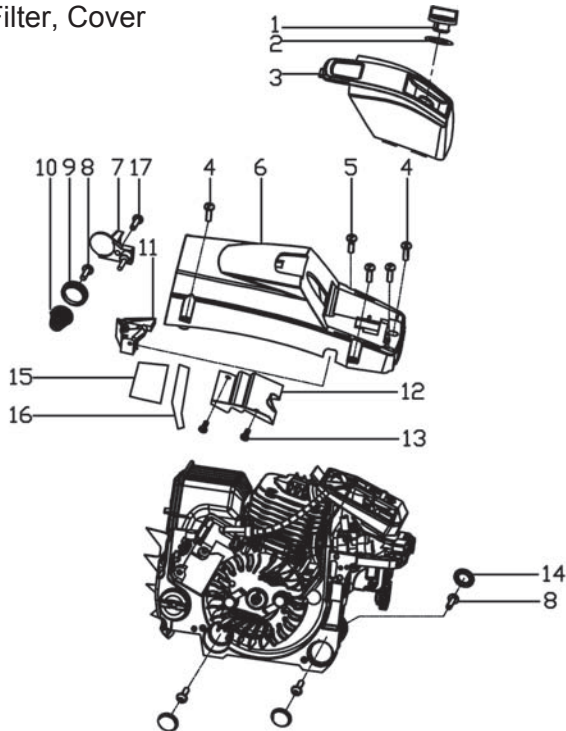
J. Engine Assembly



A. Handle, Fuel Tank

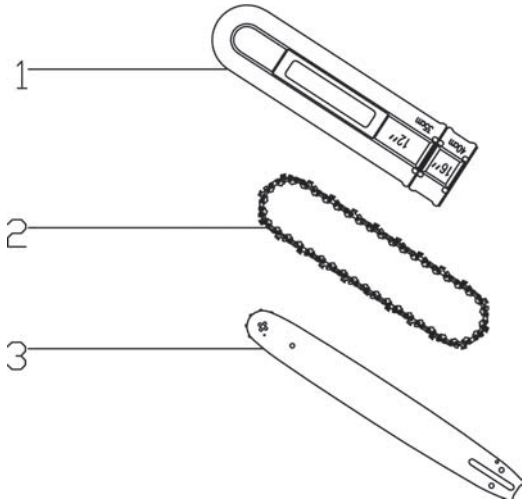
Part No.	Parts Description	Quantity
J1	Oil Tank Cap Assembly	1
J1-1	Oil Tank Cap	1
J1-2	Packing Washer	1
J1-3	Cap Retainer	1
J2	Short Damping Block	3
J3	Screw M4x8	2
J4	Oil Seal Protector	1
J5	Oil Seal 15x35x5	1
J6	Ring 35	1
J7	Bearing 6202	2
J8	Screw M5x30	5
J9	Left Crankshaftcase	1
J10	Flameout Switch Retainer	1
J11	Flameout Switch	1
J12	Screw M5x10	1
J13	Ground Strip	1
J14	Dust Plate	1
J15	Throttle Rod	1
J16	Throttle Lever Retainer	1
J17	Anti-shock Block	1
J18	Oil Seal 15x28x5	1
J19	Screw St4x10	1
J20	Protecting Shield	1
J21	Protecting Shield Gasket	1
J22	Chain Guide	1
J23	Stud	2
J24	Screw M5*12	2
J25	Spiked Bumper	1
J26	Sponge Block	1
J27	Aeration Nozzle Circlip	1
J28	Aeration Nozzle	1
J29	Right Crankshaftcase	1
J30	Pin 5x10	3
J31	Crankshaftcase Gasket	1
J32	Insulating Bush	1
J33	Suction Tube	1
J34	Aeration Nozzle Circlip	1
J35	Suction Nozzle	1

K. Upper Cover, Air Filter, Cover



Part No.	Parts Description	Quantity
K1	Air Filter Lock Nut	1
K2	Lock Nut Washer	1
K3	Air Filter Cover	1
K4	Screw M5x16	4
K5	Screw M5x14	1
K6	Upper Cover	1
K7	Chain Catcher	1
K8	Screw St4.8x16	4
K9	Conical Spring Base	1
K10	Conical Spring	1
K11	Idle Adjusting Guide	1
K12	Air Flue Board	1
K13	Screw St4.2x8	2
K14	Dust Cover	3
K15	Aluminized Paper 1	1
K16	Aluminized Paper 2	1
K17	Screw M5x16	1

L. Bar Sleeve, Chain, Bar



Part No.	Parts Description	Quantity
L1	Bar cover	1
L2	Chain	1
L3	Bar	1

Limited Manufacturer Warranty

North American Tool Industries (NATI) makes every effort to ensure that this product meets high quality and durability standards. NATI warrants to the original retail consumer a 1-year limited warranty from the date the product was purchased at retail and each product is free from defects in materials. Warranty does not apply to defects due directly or indirectly to misuse, abuse, negligence or accidents, repairs or alterations, or a lack of maintenance. This product is intended for personal use. The warranty will be voided if used in commercial, rental, or industrial applications. NATI shall in no event be liable for death, injuries to persons or property, or for incidental, special or consequential damages arising from the use of our products. To receive service under warranty, the original manufacturer part must be returned for examination by an authorized service center. Shipping and handling charges may apply. If a defect is found, NATI will either repair or replace the product at its discretion.

DO NOT RETURN TO STORE

For Customer Service:

Email feedback@natitools.com or

Call **1-800-348-5004**