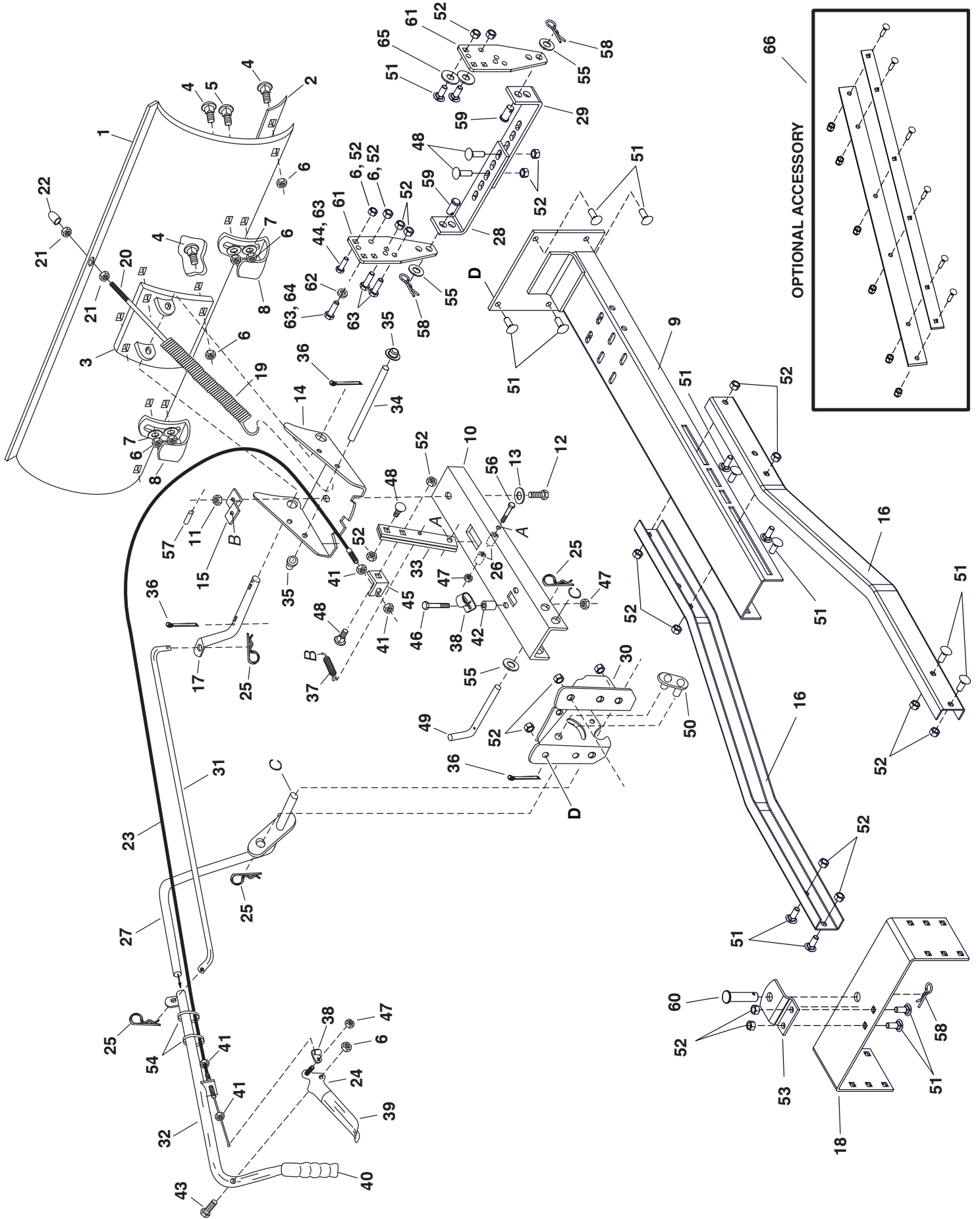


REPAIR PARTS LIST FOR MODEL LBD48D 48" SNOW BLADE



REPAIR PARTS LIST FOR MODEL LBD48D 48" SNOW BLADE

REF. NO.	PART NO.	QTY.	DESCRIPTION	REF. NO.	PART NO.	QTY.	DESCRIPTION
1	23955	1	Blade 48"	35	44917	2	Pin Nut, 3/8"
2	23956	1	Wear Plate 48"	36	43010	3	Cotter Pin 1/8" x 1-1/4"
3	62980	1	Reinforcement Plate Assembly	37	43348	1	Angle Lock Spring
4	43080	6	Bolt, Carriage 5/16-18 x 3/4"	38	746-0260	2	Cable End Fitting
5	44326	4	Bolt, Carriage 5/16-18 x 1"	39	731-0869	1	Grip, Plastic
6	47810	15	Nylon Lock Nut, 5/16-18	40	46471	1	Handle, Grip
7	43081	4	Washer, 5/16"	41	712-0256	2	Hex Jam Nut, 5/16-24
8	24690	2	Skid Shoe	42	23658	1	Spacer
9	64732	1	Thrust Channel	43	43085	1	Hex Bolt, 5/16-18 x 1-1/2"
10	24347	1	Push Channel	44	43063	4	Bolt, Hex 5/16-18 x 1"
11	43262	1	Hex Lock Nut, 1/2-13	45	05762	1	Cable Mount Bracket
12	23131	1	Bolt, Special Pivot	46	1509-90	1	Hex Bolt 1/4-20 x 1-1/4"
13	1540-118	1	Washer, Flat 1/2"	47	47189	3	Nylon Lock Nut, 1/4-20
14	23958	1	Plate, Pivot 7 Ga.	48	710-0305	4	Carriage Bolt, 3/8-16 x 1-1/4"
15	23130	1	Bracket, Spring Mt.	49	46065	1	Channel Pivot Pin
16	24659	2	Rear Support Channel	50	63034	1	Lift Link Assembly
17	46066	1	Shaft, Blade Pivot	51	43350	18	Carriage Bolt, 3/8-16 x 1"
18	25125	1	Rear Mounting Bracket	52	HA21362	22	Nylon Lock Nut, 3/8-16
19	9466R	1	Spring, Blade Adjust	53	HA23380	1	Rear Locating Bracket
20	44071	1	Hex Bolt, 3/8-16 x 3-1/2"	54	726-0178	2	Plastic Tie
21	43015	2	Hex Nut, 3/8-16	55	R19171616	3	Washer. 1/2" x 1" x .059" Thin
22	44074	1	Plastic Cap	56	46071	1	Hex Bolt, 1/4-20 x 3-1/4"
23	49808	1	Control Cable Assembly	57	43349	1	1/4" x 1" Spring Pin
24	62561	1	Release Grip Assembly	58	43343	3	Pin, 3/32" Hairpin (Large)
25	43055	4	Pin, Hairpin Small 3/32"	59	44062	2	Clevis Pin, 1/2" x 1" Lg.
26	46053	2	Spacer, .28 ID x 1"	60	HA3980	1	Clevis Pin, 5/8" x 1-3/4" Lg.
27	63033	1	Lift Handle Rod Assembly	61	25124	2	Frame Bracket
28	25121	1	Short Hanger Bracket	62	43003	2	Lock Washer, 3/8"
29	25122	1	Long Hanger Bracket	63	43001	4	Hex Bolt, 3/8-16 x 1"
30	24023	1	Pivot Support Bracket	64	47630	2	Hex Bolt, 5/16-18 x 3/4" Self Thd
31	48167	1	Rod, Blade Pivot	65	R19172410	4	Washer, 1/2" x 1-1/2" x .134"
32	65519	1	Lift Handle Tube Assembly	66	66754	1	Rubber Blade Kit (not included)
33	23151	2	Angle Lock Bar		42363	1	Owners Manual
34	23856	1	Spring Mount Rod				