

# BRIGHT CANVAS

## HOW-TO GUIDE



To create this look, a tinted translucent glaze is applied over two basecoats of semi-gloss paint, and then a woven canvas pattern is worked into the wet glaze with the Ralph Lauren 7" Weaver Brush



### WHAT YOU WILL NEED:



Ralph Lauren Semi-Gloss Paint  
See Step One for space estimations.



Ralph Lauren Faux Technique Glaze  
See Step One for space estimations.



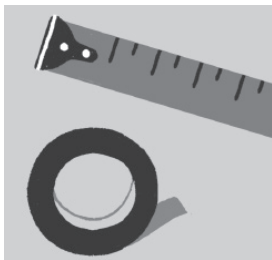
Quality 9" Roller Frame with TWO 3/8" Nap Roller Covers



Ralph Lauren 7" Weaver Brush

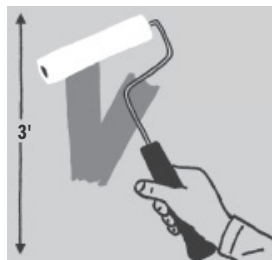
**ADDITIONAL ITEMS:** 2" Painter's tape · Drop cloth · Latex gloves · Paint tray · Lint-free rags · Tape measure · Chalk · Quality 1 1/2" nylon/poly trim brush

#### STEP ONE: PREP



- Measure your room to estimate how much paint you'll need. In general, one gallon of Ralph Lauren Semi-Gloss Paint covers approximately 200 square feet with two coats. One gallon of Ralph Lauren Faux Technique Glaze covers approximately 400 to 800 square feet with one coat.
- Always start with clean, dry walls that have been primed with a latex primer.
- Tape off all areas to be painted with 2" painter's tape, including across the ceiling and any adjacent walls.

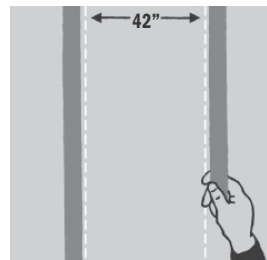
#### STEP TWO: BASECOAT



- Using Ralph Lauren Semi-Gloss Paint and the quality 1 1/2" trim brush, outline the ceiling and trim.
- Condition the first quality 9" roller frame with 3/8" nap roller cover by rolling it through the paint 20 to 30 times. Then, painting in a random V-pattern, cover small 3' x 3' sections. Each roller-full should cover one section. Finish each section with a smooth ceiling-to-floor stroke, and then continue working in sections until the wall is entirely painted.
- Allow four hours for the basecoat to dry, and then apply a second coat.
- Wait 24 hours for the second coat to dry, and then proceed to Step Three.

**HELPFUL HINT** To perfect your glaze technique, prepare a practice board with one coat of the Ralph Lauren Semi-Gloss Paint.

#### STEP THREE: TAPE



- Measure the room with the tape measure, and then divide it into equal sections to simulate fabric panels; each section should not exceed 42" wide.
- Mark sections along the top of the walls with chalk, and then draw a chalk line straight down the wall from each mark to the floor. Mark around doors and windows as if they do not exist.
- Unlike the basecoat, which can be fully applied in a single day, the glaze is applied only to every other marked section during the first day. The remaining sections are glazed the following day.
- Tape the outer edges of the sections you're going to glaze on the first day, and brush away remaining chalk guidelines. Once glazed, chalk marks can't be removed.

**HELPFUL HINT** A carpenter's level ensures straight lines.

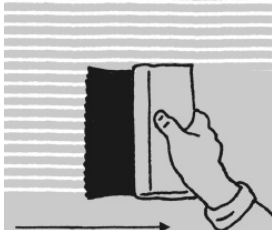
#### STEP FOUR: GLAZE & WEAVE



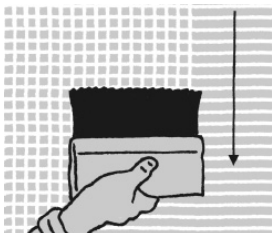
- Condition the second quality 3/8" nap roller cover by rolling it through the tinted glaze at least 20 times. Starting at the top corner of the wall in your first section, apply glaze in a uniform layer, reloading the roller three to five times for full coverage. Stay close to the trim and ceiling, slightly overlapping the glaze onto the tape.
- Once the entire section is covered and without reloading, gently sweep from ceiling to floor to even out roller marks. Don't worry if the glaze appears translucent.
- The trim brush can be used to spread the glaze to hard-to-reach areas.

**STEP FOUR: GLAZE & WEAVE**

continued



- Immediately after the glaze has been applied, start at the top left corner and drag a dry Ralph Lauren 7" Weaver Brush from left to right and back again across the entire section in a smooth, firm stroke without stopping or lifting. The flat side of the brush bristles should be against the wall; bristles should bend as you drag.
- Repeat for a total of four strokes over the same horizontal strip, and work your way down the wall, wiping the brush bristles with a lint-free rag after each stroke.

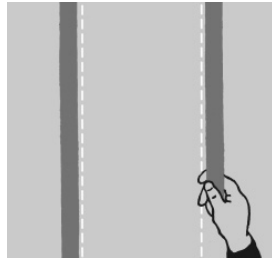


- Immediately follow with a vertical stroke from top to bottom, starting at the ceiling and lightly sweeping downward to the floor with the flat side of the bristles against the wall.
- Repeat vertical downward strokes across the entire section, wiping the brush bristles with a lint-free rag after each stroke.
- Continue to glaze and weave every other panel until complete.

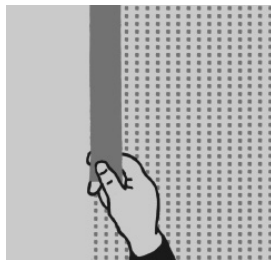
**HELPFUL HINTS** *To keep the glaze from pooling at the tape's edge, start and stop horizontal strokes on the tape.*

*If working in a corner or by trim, only drag the Ralph Lauren 7" Weaver Brush outward.*

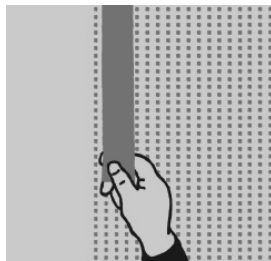
**STEP FIVE: RE-TAPE**



- Leave the tape along the horizontal ceiling and trim for the entire process.
- Gently remove the tape along the vertical seams of the glazed sections. Allow glazed areas to dry for 24 hours, and then choose between two techniques to tape off the remaining unglazed sections:

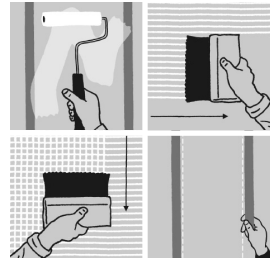


- **OPTION 1: ADJOINING SEAMS** For a subtle seam, place tape on top of the dried glaze along the edge where it meets the next section.



- **OPTION 2: OVERLAPPING SEAMS** For a more apparent seam, place tape on top of the dried glaze 1/16" to 1/8" from the edge of the glazed section. That small area will receive a double glaze layer when the next section is painted.

**STEP SIX: FINAL PANELS**



- Repeat Step Four on the remaining sections until the room is complete. Gently remove the tape, and allow the paint to dry.

**HELPFUL HINT** *Ralph Lauren Faux Technique Glaze can be painted over without sanding the walls first. Apply a coat of a premium primer followed by your new Ralph Lauren Paint or Ralph Lauren Specialty Finish.*