

STARLIKE[®] COLOR CRYSTAL

PATENTED

STARLIKE[®] COLORCRYSTAL • APPLICATION



1 Empty completely all the contents of the catalyst (B) onto the paste (A).



2 Mix using an electric drill equipped with mixing paddle (Never mix only by hand with a trowel). Scrape the walls of the bucket to eliminate all parts of non-catalysed product.



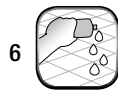
3 The joints must be dry. Introduce the mortar into the joints using the suitable green rubber float (art. 946GR) spreading diagonally across the joints. Remove the excess product.



4 The grout must be cleaned while the product is still wet. Sprinkle clean water. Initial cleaning using a moistened white felt (art. 109/G) making circular movements. Ensure no water enters the joints. Any adjustments to the grout must be performed before cleaning with water.



5 Now perform a second cleaning with a rigid cellulose sponge (art. 128/G).



6 Any stains of the transparent product can be removed after 24 hours or anyway after the gap has hardened. Use LITONET (floors) or LITONET GEL (walls) or use equivalent Tile Doctor Haze Remover. Spread Litonet or Litonet Gel with the white felt.



7 Leave on for 15-30 minutes. Scrub the surface with the white felt.

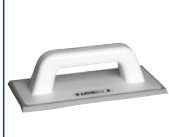


8 Rinse with clean water. Dry immediately with a clean cloth and do not wait for the evaporation of the rinse water.



ADVISED TOOLS

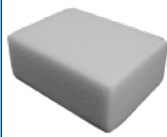
Art. 946GR



Art. 109/ G



Art. 128/ G



Litonet /Litonet Gel



LITOKOL[®]
HI-PERFORMANCE BUILDING PRODUCTS

Made In Italy



the
Tile Doctor

EXCLUSIVE DISTRIBUTOR FOR USA
Tile Doctor
www.TileDoctor.com
877-TileDoc (845-3362)