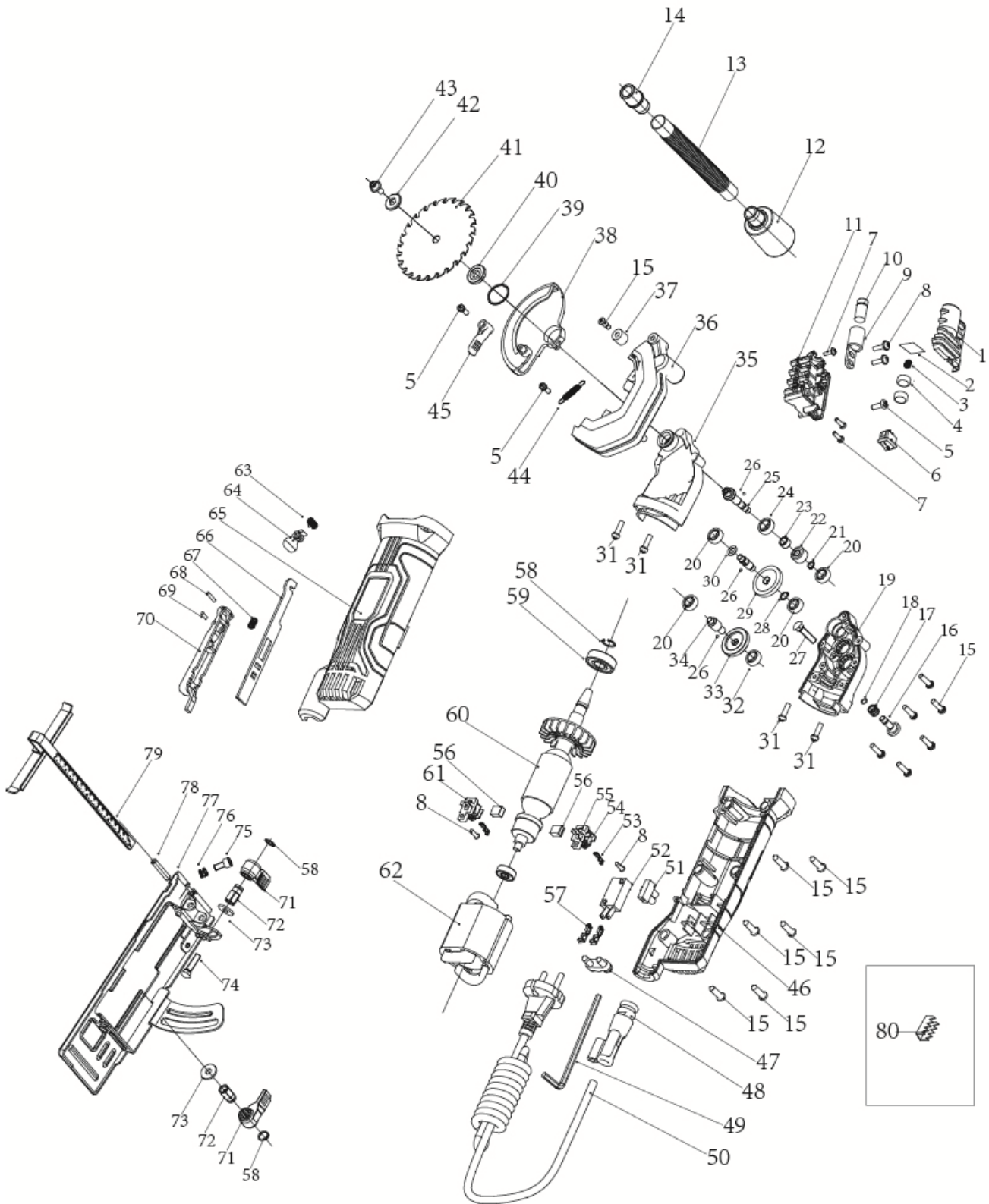


EXPLODED VIEW & PARTS LIST



Item	Stock#	Description	Qty
1	PS4005/4005-HW-001	laser cover	1
2	PS4005/4005-HW-002	spring holder	1
3	PS4005/4005-HW-003	tower type spring	1
4	PS4005/4005-HW-004	button cell	2
5	PS4005/4005-HW-005	ST4.2x12 Cross head screw	3
6	PS4005/4005-HW-006	rocket switch	1
7	PS4005/4005-HW-007	cross head screw ST2.9*10	3
8	PS4005/4005-HW-008	cross head self-tapping screw	4
9	PS4005/4005-HW-009	laser holder	1
10	PS4005/4005-HW-010	laser head	1
11	PS4005/4005-HW-011	laser plate	1
12	PS4005/4005-HW-012	dust pipe connector C	1
13	PS4005/4005-HW-013	corrugated pipe	1
14	PS4005/4005-HW-014	dust pipe connector D	1
15	PS4005/4005-HW-015	cross head self-tapping screw ST4.2X16	13
16	PS4005/4005-HW-016	lock cap assembly	1
17	PS4005/4005-HW-017	spring for lock pin	1
18	PS4005/4005-HW-018	snap spring	1
19	PS4005/4005-HW-019	right gear box cover	1
20	PS4005/4005-HW-020	bearing 607-2Z	4
21	PS4005/4005-HW-021	circlip for shaft 8	1
22	PS4005/4005-HW-022	pinion	1
23	PS4005/4005-HW-023	distance sleeve	1
24	PS4005/4005-HW-024	bearing 699-2Z	1
25	PS4005/4005-HW-025	output shaft	1
26	PS4005/4005-HW-026	steel ball	3
27	PS4005/4005-HW-027	step bolt M6*26	1
28	PS4005/4005-HW-028	circlip for shaft 9	1
29	PS4005/4005-HW-029	big gear	1
30	PS4005/4005-HW-030	flat washer 13*7.1*0.5	1
31	PS4005/4005-HW-031	cross head screw 4.2*20	4
32	PS4005/4005-HW-032	bearing 698-2Z	1
33	PS4005/4005-HW-033	spiral bevel gear	1
34	PS4005/4005-HW-034	first gear shaft	1
35	PS4005/4005-HW-035	gear box	1
36	PS4005/4005-HW-036	upper guard	1
37	PS4005/4005-HW-037	rubber stop	1
38	PS4005/4005-HW-038	lower guard	1
39	PS4005/4005-HW-039	circlip	1
40	PS4005/4005-HW-040	inner flange	1

Item	Stock#	Description	Qty
41	PS4005/4005-HW-041	saw blade	1
42	PS4005/4005-HW-042	outer flange	1
43	PS4005/4005-HW-043	saw blade forcing screw M6*!4	1
44	PS4005/4005-HW-044	spring	1
45	PS4005/4005-HW-045	lower guard lever	1
46	PS4005/4005-HW-046	right housing	1
47	PS4005/4005-HW-047	cord clamp	1
48	PS4005/4005-HW-048	cord holder	1
49	PS4005/4005-HW-049	hex key	1
50	PS4005/4005-HW-050	power cord	1
51	PS4005/4005-HW-051	wire connector	1
52	PS4005/4005-HW-052	switch	1
53	PS4005/4005-HW-053	2.8 socket terminal	2
54	PS4005/4005-HW-054	coil spring	1
55	PS4005/4005-HW-055	left carbon brush holder	1
56	PS4005/4005-HW-056	carbon brush	2
57	PS4005/4005-HW-057	4.8 socket terminal	2
58	PS4005/4005-HW-058	circlip for shaft 10	3
59	PS4005/4005-HW-059	bearing 6000-2Z	1
60	PS4005/4005-HW-060	armature 120V	1
61	PS4005/4005-HW-061	right carton brush holder	1
62	PS4005/4005-HW-062	stator 120V	1
63	PS4005/4005-HW-063	torsion spring for lock off button	1
64	PS4005/4005-HW-064	lock off button	1
65	PS4005/4005-HW-065	left housing	1
66	PS4005/4005-HW-066	push rod	1
67	PS4005/4005-HW-067	switch push block spring	1
68	PS4005/4005-HW-068	round pin	1
69	PS4005/4005-HW-069	round pin for lock off button	1
70	PS4005/4005-HW-070	switch push block	1
71	PS4005/4005-HW-071	depth adjust lever	2
72	PS4005/4005-HW-072	lock rod	2
73	PS4005/4005-HW-073	big washer	2
74	PS4005/4005-HW-074	step bolt M6*26	1
75	PS4005/4005-HW-075	hex round cap screw M6X12	1
76	PS4005/4005-HW-076	spring for guide fixed screw	1
77	PS4005/4005-HW-077	baseplate assembly	1
78	PS4005/4005-HW-078	spring column pin D6X35	1
79	PS4005/4005-HW-079	edge guide	1
80	PS4005/4005-HW-080	H buckle	1