

1 IMPORTANT SAFEGUARDS / GENERAL CAUTIONS

● READ ALL INSTRUCTIONS BEFORE INSTALLATION AND USE

The following terms are used in this manual to indicate hazards of varying degrees of severity.

DANGER	Indicates an imminently hazardous situation which, if not avoided, will result in death or serious injury.
WARNING	Indicates potentially hazardous situation which, if not avoided, could result in death or serious injury.
CAUTION	Indicates potentially hazardous situation which, if not avoided, may result in minor or moderate injury or in damage to the product or other property.

- DANGER** - To reduce the risk of electrocution
- WARNING** - To reduce the risk of burns, electrocution, fire, or injury to persons
- PLEASE OBSERVE THE FOLLOWING PRECAUTION BEFORE USING THIS PRODUCT**

Do not open the product to repair or remodel. Only qualified service personnel should service this product. Do not use attachments not recommended by the manufacturer.

Connect this product to cold water supply pipe carrying potable water. Do not connect to an industrial water supply line that does not carry water of drinking quality. This will negatively effect hygiene and performance.

About Low Temperature Burns-
A burn occurs when the skin has been exposed to high temperatures. However, a low temperature burn may occur when the skin has been in contact with an object at relatively low temperature (about 104 °F). Close supervision is necessary when this product is used by children or adults with sensitive skin.

If using any chemical toilet bowl cleaner, be sure to wipe up any spills that splash onto Electric Bidet. Do not use benzene or any acid chemical detergent. Only neutral detergent permitted.

Do not plug in the power cord before connecting the water supply hose.

This product must be grounded. An approved Ground Fault Circuit Interrupt must be used.

Do not splash water on this product. Please provide adequate ventilation to avoid high levels of humidity which can damage the electronic components. It is necessary to provide adequate ventilation with a fan, open door or open window when bathing.

Do not touch the power cord with wet hands. Do not reach for a product that has fallen into water. Unplug immediately!

This product must be connected to a standard voltage power source. Do not connect power cord if the cord is damaged or broken. Do not plug the unit into a loose electric outlet.

Please disconnect the power cord when you clean this product or detach it from toilet bowl. Do not supply electrical power to the unit until the plumbing work has been completed.

Keep the electrical cord away from heated surfaces to prevent a fire hazard. Also, keep any flammable materials away from this product at all times.

1 IMPORTANT SAFEGUARDS / GENERAL CAUTIONS

CAUTION



Prohibited

Never operate this product if it is not working properly, if it has been dropped or damaged, or dropped into water. Return the product to a service center for examination and repair.



Prohibited

Do not obstruct or put anything into the dry air outlet. Do not apply excessive force to the shower nozzle.



Prohibited

Do not stand or sit on the seat cover lid. It is not designed to support a user's body weight.



Prohibited

Allow the seat and lid to close automatically. Do not force the lid closed.



Prohibited

Do not strain or push the connected hose and tube connector; it may cause water leakage. Never drop or insert any object into any opening or hose. Use proper plumbing supplies if any modification is to be made.



Observe at all times

Use this product only as described in the operating instructions. Never use while sleeping or drowsy. Do not use while bathing.



Observe at all times

Be careful so that this product does not become stained with excrement and urine.



Observe at all times

Drain the water from unit and unplug the power if this product is not going to be used for an extended period of time. Refer to page 19.



- SAVE THESE INSTRUCTIONS -

2 CAUTIONS BEFORE INSTALLATION

WIRING REQUIREMENT

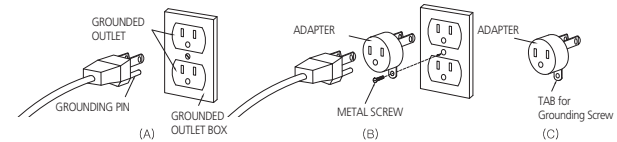
THIS PRODUCT MUST BE PLUGGED into a regular voltage grounded GFCI outlet (North America 120V ac). The rated power consumption is 1400W. In locations where only a standard two-prong outlet is available, it is the responsibility of the user to install a grounded three-prong outlet. Using a higher voltage is dangerous and may result in a fire or other accident. This product is not responsible for damage resulting from the use of it on other than specified voltage, or operating it without proper grounding.

WARNING

This Product must be on a separate circuit. No other appliance should share the circuit with this product. Sharing a circuit could cause the branch circuit fuse to blow or the circuit breaker to trip. Continuous usage under these conditions could result in fire or property damage.

GROUND INSTRUCTIONS

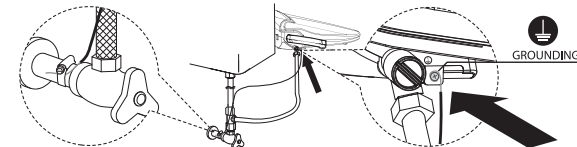
- (1) This product has a three-prong grounding plug, which must be plugged into an outlet that is properly installed and grounded. In the event of an electrical short circuit, grounding reduces the risk of electric shock by providing an escape wire for the electric current. If repair or replacement of the cord or plug is necessary, do not connect the grounding wire to either flat blade terminal. The wire with insulation having an outer surface that is green with or without yellow stripes is the grounding wire. Check with a qualified electrician or service person if the grounding instructions are not completely understood, or if in doubt as to whether the product is properly grounded.
- (2) This product is for use on a nominal 120V circuit, and has a grounding plug that looks like the plug illustrated in sketch A in Figure 1. A temporary adapter, which looks like the adapter illustrated in sketches B and C, may be used to connect this plug to a 2-pole receptacle as shown in sketch B if a properly grounded outlet is not available. The temporary adapter should be used only until a properly grounded outlet (sketch A) can be installed by a qualified electrician. The green colored rigid ear, lug, or the like extending from the adapter must be connected to a permanent ground such as a properly grounded outlet box cover. Whenever the adapter is used, it must be held in place by the screw.



- Figure 1 -

This appliance has to be earthed.

OPTIONAL GROUND INSTRUCTIONS



DANGER

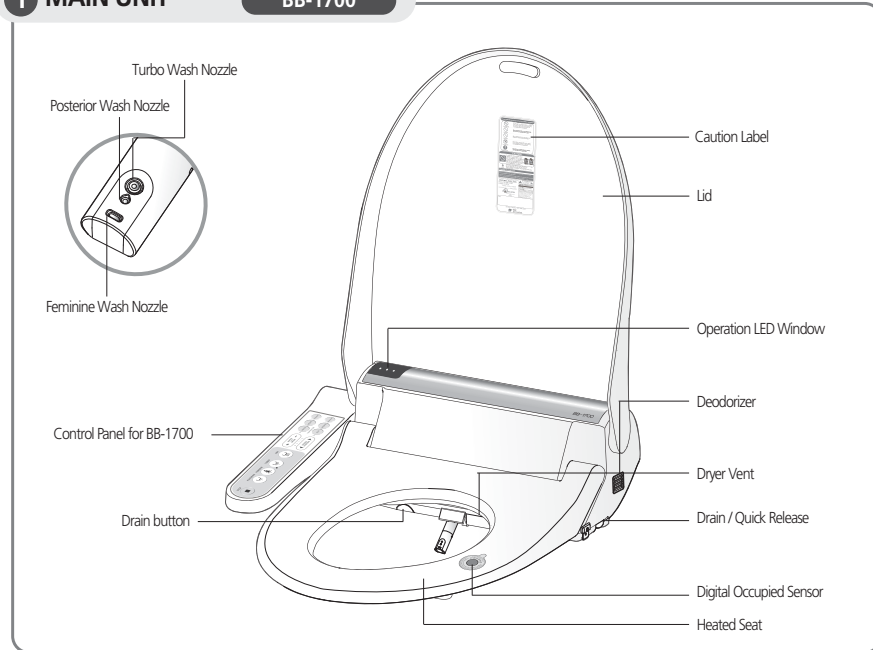
IMPROPER GROUNDING CAN RESULT IN A RISK OF ELECTRIC SHOCK. Electric wiring has to be done in accordance with all local codes, or in the absence of local codes, with the National Electrical Codes.

The use of an extension cord is not recommended or advised. If it is necessary to use an extension cord, use only a three-prong extension cord (one to one), and a three slot built-in GFCI receptacle that will accept the plug on this product. The marked rating of the extension cord should be equal to or greater than the electrical rating of the unit (10amp). Consult a qualified electrician or service person if you are not sure whether the unit is properly grounded.

3 Identification

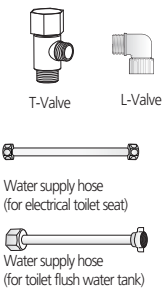
1 MAIN UNIT

BB-1700

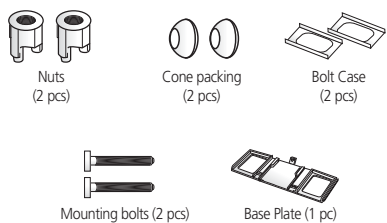


2 ACCESSORIES

For plumbing



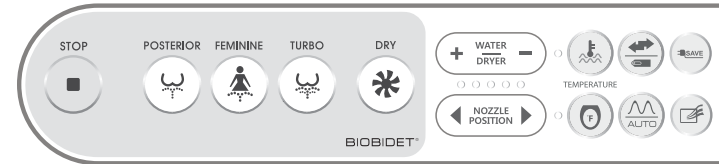
For product fixation



Installation instructions



3 BB-1700 Control Panel



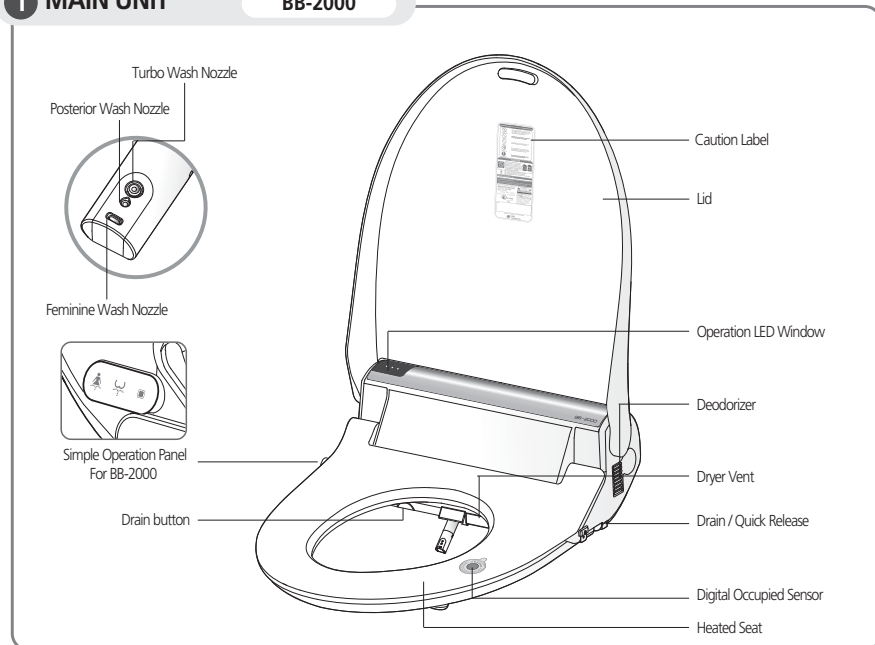
	Stop all operation.		
	Posterior wash.		Feminine wash.
	Turbo wash.		Dry washed area.
	Adjust the water pressure and warm air dryer temperature.		Adjust the oscillation function and nozzle position (5 levels).
	Adjust the water temperature (3 levels).		Adjust the seat temperature (3 levels).
	When selected during the wash function, the nozzle oscillates automatically for a wider wash.		When selected during the wash function, it starts the massage wash.
	If move button is selected when user is not sitting on the seat, it operates nozzle shower function.		If massage function selected when user is not using wash functions, it automatically operates wash and dry function sequentially.
	If Economy mode is selected, seat temperature and water temperature will stay at 89.6°F.		When user sits on the seat, it automatically operates to deodorize. (Can select on/off)

- When you sit down on this product, sit in the center in order to activate the sensor.

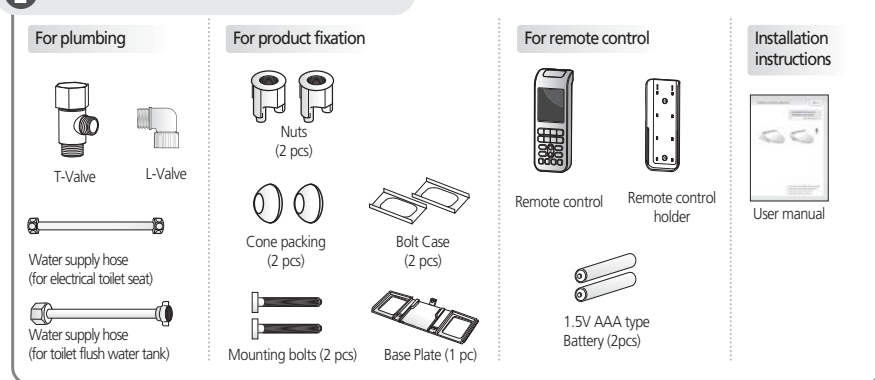
3 Identification

1 MAIN UNIT

BB-2000



2 ACCESSORIES

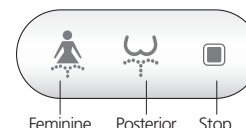


3 BB-2000 Remote Control

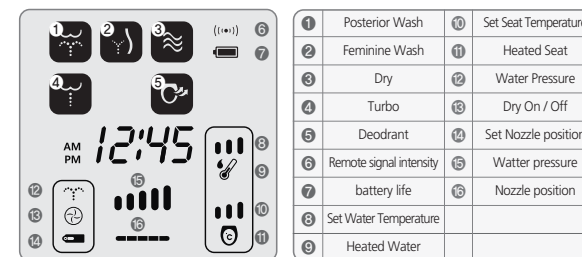


	Stop all operation.
	Posterior wash.
	Feminine wash.
	Dry washed area.
	VORTEX wash.
	When selected during wash function nozzle oscillates automatically for a wider wash.
	If move button is selected when user is not sitting on the seat, it operates nozzle shower function.
	When selected during wash function, it start massage wash.
	If message function selected when user is not using wash functions, it automatically operates wash and dry function sequentially.
	When user sits on the seat, it automatically operates to deodorize. (Can select on/off)
	The water temperature can be adjusted up to 4 levels (off, low, middle, high).
	The seat temperature can be adjusted up to 4 levels (off, low, middle, high).
	Can set time in the remote control with hour (🕒) and minutes (🕒) buttons.
	If Economy mode is selected, seat temperature and water temperature will stay at 89.6°F.
	If this (🔋) symbol flashes, please change the battery in remote control.

Simple Operation Panel



Display



- When you sit down on this product, sit in the center in order to activate the sensor.

6 Installation



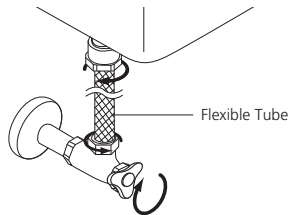
CAUTION BEFORE INSTALLATION

- Do not plug in before installation.
- If you need an electric power system or extension, please consult a qualified electrician.

STEPS

1 Turn Off Water.

- Shut off the water supply shut off valve.
- Drain the toilet tank completely.
- Then remove the existing fill valve water supply hose.



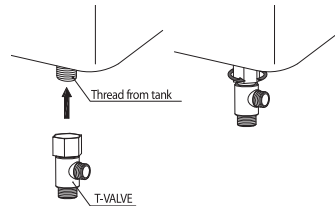
3 Removing the existing seat and lid.

- Remove mounting bolts to release existing toilet seat from toilet.

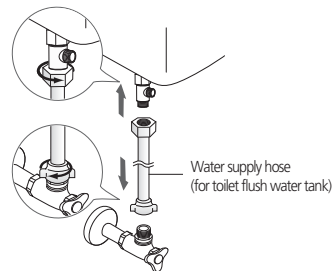


2 Connect T-Valve.

- Remove existing supply hose connected to the toilet tank. Make sure not to damage the water supply hose
- Install T-Valve at the thread from tank.



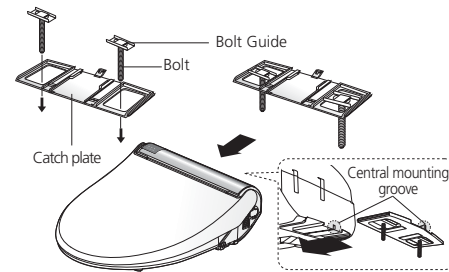
4 Connect water supply hose to the T-Valve.



※ Check for any water leaks.

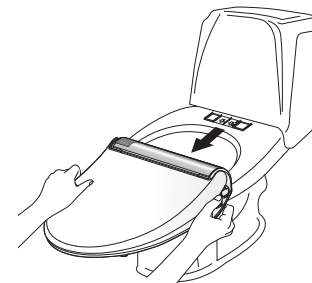
5 Installation Catch Plate.

Place the plate and guides over each mounting hole. Insert the mounting bolts through the plate and mounting holes.



7 Assembly.

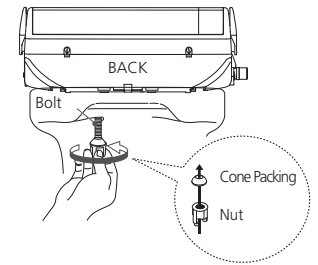
1. Slide this product onto the catch plate centering the unit with the guide arrows on the Base.
2. You will hear a click once this product is securely mounted to the catch plate.
3. This product will feel a little loose on the toilet bowl. Adjust the fit from front to back and side to side for balance.
4. Tighten the nuts on both bolts securely.



※ Check for any water leaks.

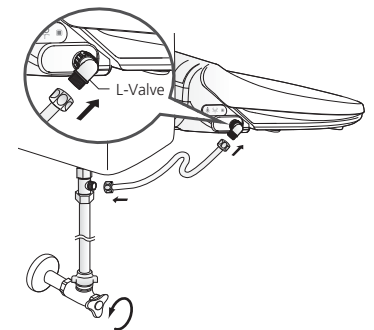
6 Bolt and Nut Assembly.

Slide cone packing and washers onto the bolts then fasten to securely mount bidet seat to toilet.



8 Connect the flexible tube from side of T-Valve to this product, Open the Angle Stop valve to fill water.

Check for any water leaks.

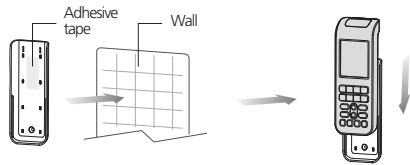


6 Installation

9 Wireless remote mounting guide. (BB-2000)

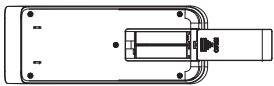
Install wireless remote with adhesive tape

- Remove adhesive from back of bracket and place bracket where desired.



Inserting batteries

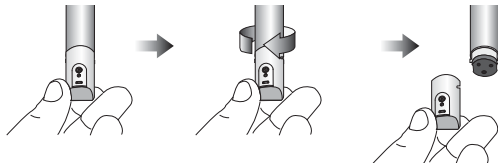
- Insert supplied batteries (1.5V AAA) and close battery cover.



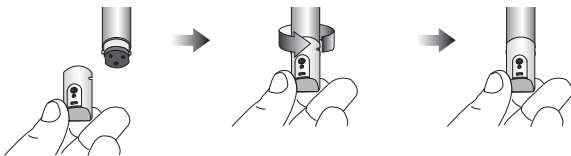
(Please check the polarity, before insert the batteries.)

10 Nozzle Change

Nozzle Separation




Nozzle Combination

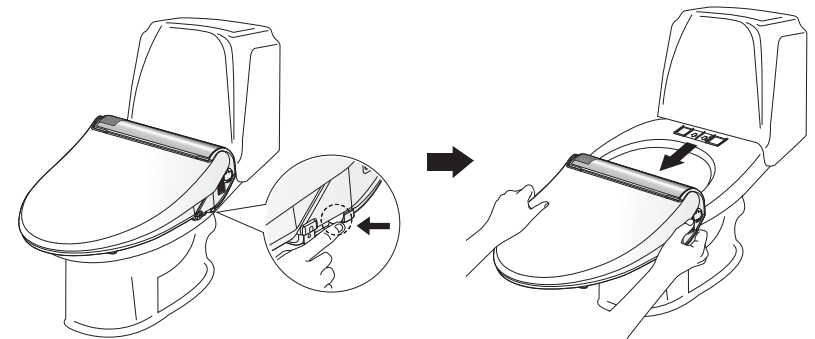
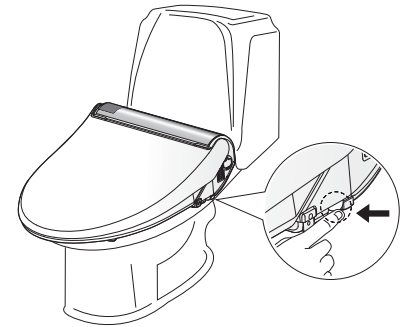


7 Separation Of Unit From The Toilet Bowl









- 1 Disconnect the power plug.
- 2 Close water supply shut-off valve.
- 3 Drain water from bidet seat using drainage as illustrated.
- 4 Remove bidet seat from toilet as illustrated.

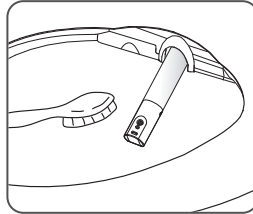
 Do not turn unit upside down.



8 Maintenance

CLEANING THE NOZZLE

- When the "Posterior Wash ( / )" button is pressed for 3 seconds without occupying the seat, the nozzle can be cleaned with a soft toothbrush.
( : in Simple Operation panel -Remote Model)
- After cleaning the nozzle, push the "Stop ( / )" button once again, and the nozzle retracts itself.
( : in Simple Operation panel -Remote Model)



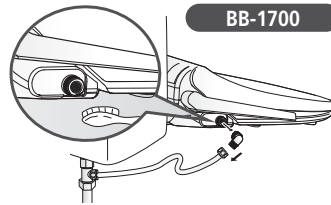
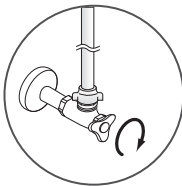
CLEANING THE BODY OF UNIT

- When you clean this product, do not use thinner, benzene or toilet bowl cleaner. It may cause damage to the surface of unit.
- Use a wet cloth when you clean this product.
- Do not spray water directly on to this product.
- When you clean this product, disconnect the power plug.

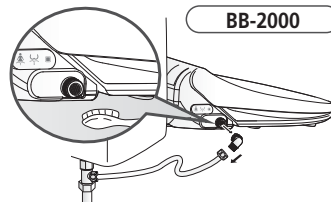
CLEANING THE STRAINER

This product will not operate properly if the strainer is clogged. Please clean the strainer regularly.

- 1) Close the water shut off valve.
- 2) Flush the toilet to empty the water reservoir.
- 3) Unscrew the water filter nut.
- 4) Clean the strainer with a small brush or water.
- 5) Re-screw the water filter nut.
- 6) Open the water shut off valve.



BB-1700



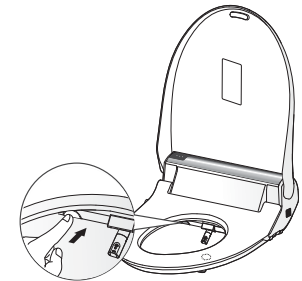
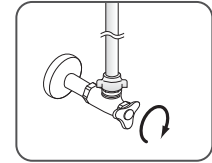
BB-2000

9 Water Draining

DRAINING THE WARM WATER TANK IN THE UNIT

If you do not intend to use this product for 14 days or longer, drain the water from this product's warm water tank.

- 1) Disconnect the power plug.
- 2) Close the water shut off valve.
- 3) Press the drain lever until the water is completely drained from water tank.
- 4) To re-supply water after draining, open the water shut off valve.



Do not drink the drained water.
Do not insert finger into the drain hole.
Before draining, unplug the power cord and wait 30 minutes until the unit has cooled down.

MAINTENANCE FOR WINTER SEASON

- 1 Check the power cord if it is plugged in or not.
- 2 Keep the water temperature on "Middle or High Level" to prevent water from freezing.
- 3 If you do not intend to use the unit for 14 days or longer, disconnect the power plug and drain the water.

10 Trouble Shooting

Trouble	Cause	Remedy
The washing water does not spray	<ol style="list-style-type: none"> The water tank is not filled. The shut off valve is closed. Freezing inside the main unit or the water supply pipe. 	<ol style="list-style-type: none"> Wait about one minute. Press the desired washing button once again. Turn on the shut off valve to open. Heat the room (for about two hours). Operating the unit while parts are frozen will cause a malfunction.
The unit is not operating	<ol style="list-style-type: none"> Disconnected the power cord. The seat is not occupied. The battery of remote controller is exhausted. (Only BB-2000 model) 	<ol style="list-style-type: none"> Connect the power cord. Check the power supply system in your house. Occupy the seat (The unit has an occupied sensor). Replace the battery.
Water is leaking	<ol style="list-style-type: none"> Check the water supply system 	<ol style="list-style-type: none"> If water is leaking from the main unit, call the service center or the place you purchased unit.
The washing water pressure is weak	<ol style="list-style-type: none"> The water pressure level is set to "LOW". The strainer is clogged. 	<ol style="list-style-type: none"> Set the water pressure to "HIGH". Clean the strainer.
The washing water is not warm	<ol style="list-style-type: none"> The water temperature is set to "LOW". Continuous operation has depleted the supply of warm water. 	<ol style="list-style-type: none"> Set the water temperature to "HIGH". Wait about three minutes.
The seat and dryer is not warm	<ol style="list-style-type: none"> The seat & dryer temperature is set to "LOW". 	<ol style="list-style-type: none"> Set the seat & dryer temperature to "HIGH".

11 Specifications



Specification		BB-1700	BB-2000
Power Rating		America or Canada: 120Vac, 60Hz, 1400W	
Water inlet type	Type	Direct Inlet flow type	
	Water inlet pressure	0.4 ~ 7.5 kgf/cm ² (5.69 psi ~ 106.7psi)	
Power cord		1.2m (4 feet): AMERICA	
Wash Device	Posterior Wash	Max. 0.7 ℓ /min (Max. 0.32 GPM)	
	Feminine Wash	Max. 0.7 ℓ /min (Max. 0.32 GPM)	
	Water Pressure Adjustable	5 Levels	
	Warm Water Temperature	Room Temp - 40°C (Room Temp. 104°F)	
	Heater	1340 W	
Safety Devices		Thermal fuse, Thermal switch, Float switch	
Heated Seat	Temperature	Room Temp ~ 41°C (Room Temp. ~ 105.8°F)	
	Heater	55 W	
	Safety Device	Thermal fuse	
Warm Air Dryer Device	Adjustable Dry Temperature (Room Temp-45°C)		
	Heater (250W)	○	○
	Safety Device (Thermal fuse, bimetal)		
Turbo& Vortex Function		○	○
Deodorizer		-	○
Remote control		-	○
Inlet water temperature		3°C~ 35°C (37.4°F ~ 95°F)	
Ambient Temperature		3°C~ 40°C (37.4°F ~ 104°F)	
Dimension	Elongated(Control)	Elongated (Remote)	
	W: 460mm / L: 531mm / H: 152mm	W: 392mm / L: 531mm / H: 152mm	
Weight (kg)		4.9kg	4.8kg