

PEACE OF MIND THRESHOLD RAMP

For Wheelchairs and Scooters

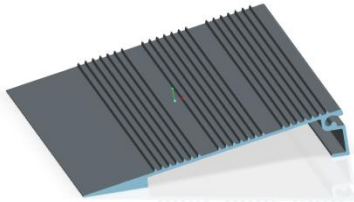
FOR YOUR SAFETY PLEASE READ

- Maximum weight limit is 800 pounds
- Read and follow all instructions before use
- Do not use if ramp is damaged or unstable

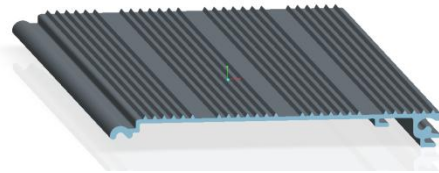
It is important to refer to your equipment's (wheelchair or scooter) user guide for the proper degree of incline or decline. Never exceed user guide recommendations.

Packaged as follows:

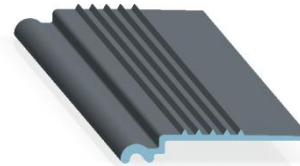
The POM Threshold Ramp comes ready to assemble in the following heights: 3 inches, 4 inches, and 6 inches. Parts will vary depending on the size purchased.



Part #POMSP
Starter Plank



Part #POMMP
Main Plank



Part #POMTP
Top Plank



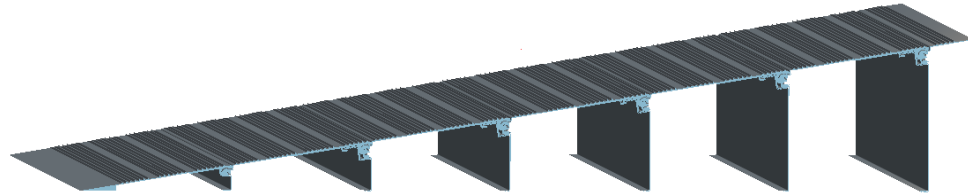
Part #P(X)L
Leg
(X=2,3,4,5 or 6" Leg)

See reverse side for assembly instructions

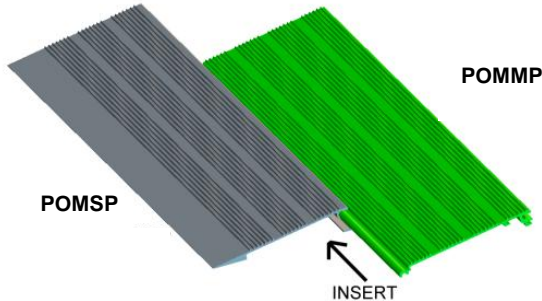
Assembly Instructions

PEACE OF MIND THRESHOLD RAMP For Wheelchairs and Scooters

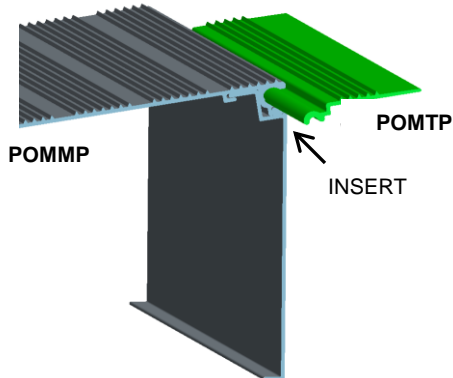
Figure to the right illustrates a completed POM Threshold Ramp with a 6 Inch rise.



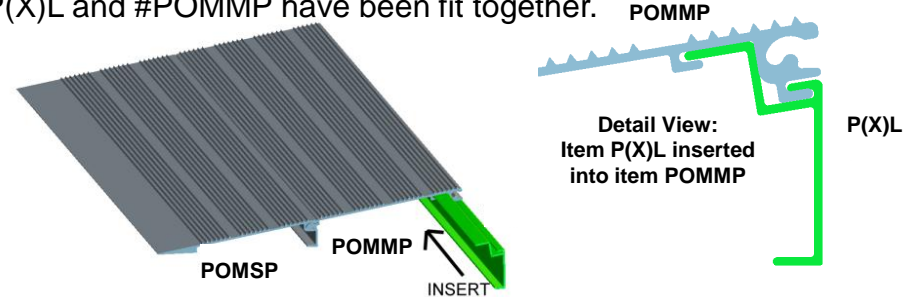
Step 1. Begin with part #POMSP and insert part #POMMP along the groove.



Step 3. (Optional) Add part #POMTP for use in securing your POM ramp to a threshold surface.



Step 2. While holding #P(X)L parallel to #POMMP, line up the 2 molded lips of #P(X)L with the 2 grooves of #POMMP and slide #P(X)L into the grooves. Repeat this process until all #P(X)L and #POMMP have been fit together.



Step 4. Before securing screws make sure #POMMP and #SXL are flush so that the holes align. Using a Philips' head screwdriver tighten the enclosed screws into the pre-drilled holes in each #POMMP. (NOTE: use 3/8" screw on #POMSP Part)

