

View the Easy Lift trimming and installation video at www.redishade/easy-lift.com.

Customer Service: 1-888-608-6611

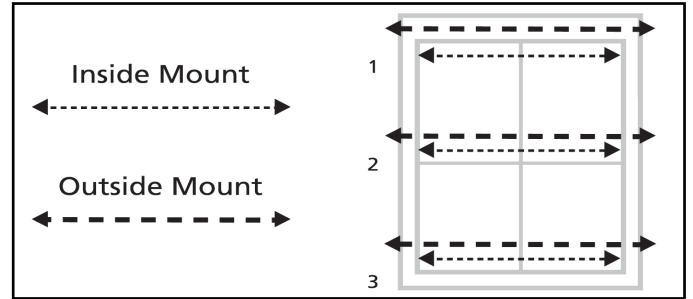
Included: Easy Lift Shade with Trimming Scale | Trimming Guide

1 Measure



Measure your window width in 3 locations. Use the smallest measurement.

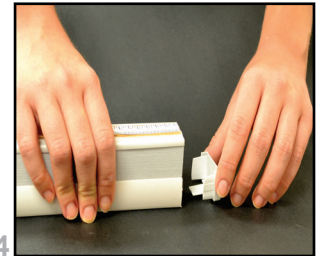
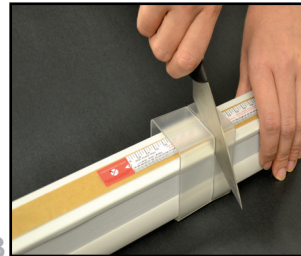
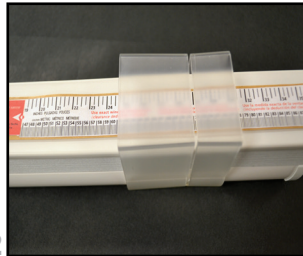
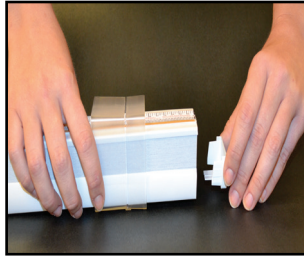
(Please note our patented cutting scale already takes into account the clearance deduction for inside mount.)



2 Trim

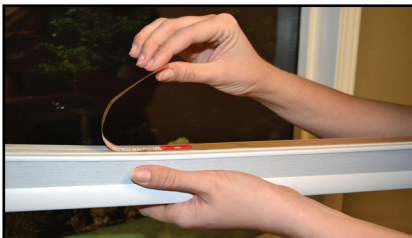


A smooth kitchen knife with a 3.5" inch blade is recommended.



- 1) Remove bottom rail end caps.
- 2) Place cutting guide at exact desired width. *(No clearance deduction needed; it's already included).*
- 3) Position the knife blade at an angle on the top of the shade at your exact measurement.
 - a) Press firmly cutting through rails and fabric with a rocking motion and constant pressure.
 - b) Trim each side of the shade to the same exact window measurement.
- 4) Replace end caps on bottom rail.

3 Install & Operate



a) Peel to remove liner.



b) Press firmly across width of shade to install.



c) Pull shade down to lower and push up to raise.

Cleaning & Troubleshooting

Lightly dust or vacuum with upholstery attachment. For spot cleaning lightly blot with mild detergent and warm water. The shade is not intended for dry cleaning, spot removers, strong detergent or full water immersion.

If your shade becomes unbalanced and hangs unevenly, open gently to full length to reset.

For other information or questions, please visit www.redishade.com/FAQ